



DHL EXPRESS

SERVICE & RATE GUIDE 2023

RUSSIAN FEDERATION

GET STARTED

[Connecting Your World](#)

[Dear Customer](#)

[Sustainability](#)

[Service Offering](#)

[How to Ship with DHL Express](#)

[Digitalization](#)

[Zones and Rates](#)



CONNECTING YOUR WORLD

Operating in
220+
countries and
territories worldwide



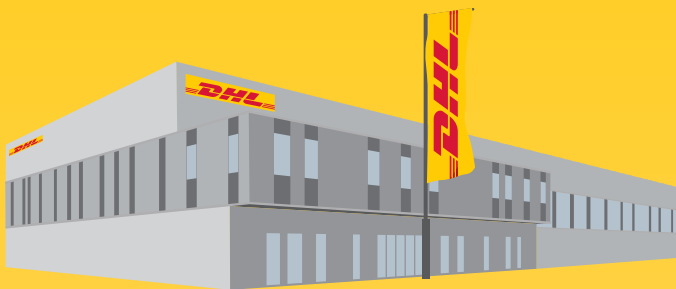
320+
aircraft



2,300+
flights per day



34,600+
vehicles



3,400+
facilities



111,800+
Service Points

By the year 2050,
Deutsche Post DHL Group
aims to achieve net zero
emissions logistics

MISSION 2050
ZERO EMISSIONS
GOGREEN

523
million+
shipments per year



120,000+
employees

 **370+**
TAPA* certifications



Figures are global and are approximate as of the end of 2021
*TAPA = Transported Asset Protection Association

DEAR CUSTOMER

Welcome to the DHL Express Service and Rate Guide 2023. Use this guide to learn how DHL Express products, services and tools can meet your logistics needs. DHL Express is the global market leader and a specialist in Time Definite International (TDI) shipping and courier delivery. We have been building and continuously improving for over 50 years through our team of 120,000 Certified International Specialists, helping more than 2.7 million customers globally.

The world has been buffeted by COVID-19 since 2020. We are proud that DPDHL, having enabled supply chains to move more than 2.5 billion vaccine doses so far, continues to contribute to the solution – and we are adapting every day to a still-evolving situation.

In response to these and other uncontrollable events, we continue to make significant **investments** to reinforce the resilience of our global network and secure critical supply chains – thereby continuing to prove our ability to offer reliable services to our customers globally.

Since the beginning of 2022, the geopolitical situation has also had a significant impact on all areas of business. Despite all the shocks, we have been able to adapt our business and processes to the changed conditions and continue to work, providing reliable express delivery to 220 countries and territories around the world, realizing our mission of “connecting people, improving lives.”

Environmental responsibility continues to be a pillar of our long-term strategy through the DPDHL Sustainability Roadmap. In 2022 we signed ground-breaking agreements with bp and Neste to increase our use of Sustainable Aviation Fuel (SAF). We continue to accelerate the electrification of our last-mile fleet while investing in next-generation technology such as the all-electric Alice airplane, designing and constructing carbon neutral buildings and offering a portfolio of green products. Read more about this on page 4 and on the DPDHL Sustainability portal.

As part of Strategy 2025, we continue to earmark **Digitalization** – which we define as the conscious application of technology and enablement of people, as a means to improve – as a key enabler to reach the next level of excellence for our customers, for our employees and to drive operational efficiency. Read about some of the key developments on pages 14 and 15 and how they benefit you. Try some of them out at MyDHL+ if you haven't already!

We strive to successfully continue our partnership and remain committed to supporting your business anytime and anywhere. **Globalization** remains a powerful force and we invite you to read the first edition of the global DHL Trade Growth Atlas report, which we hope will become a go-to resource for understanding and navigating shifts in the global trade landscape – see page 6 for more. Thank you for trusting us to be your Logistics Partner of Choice!

Sincerely,

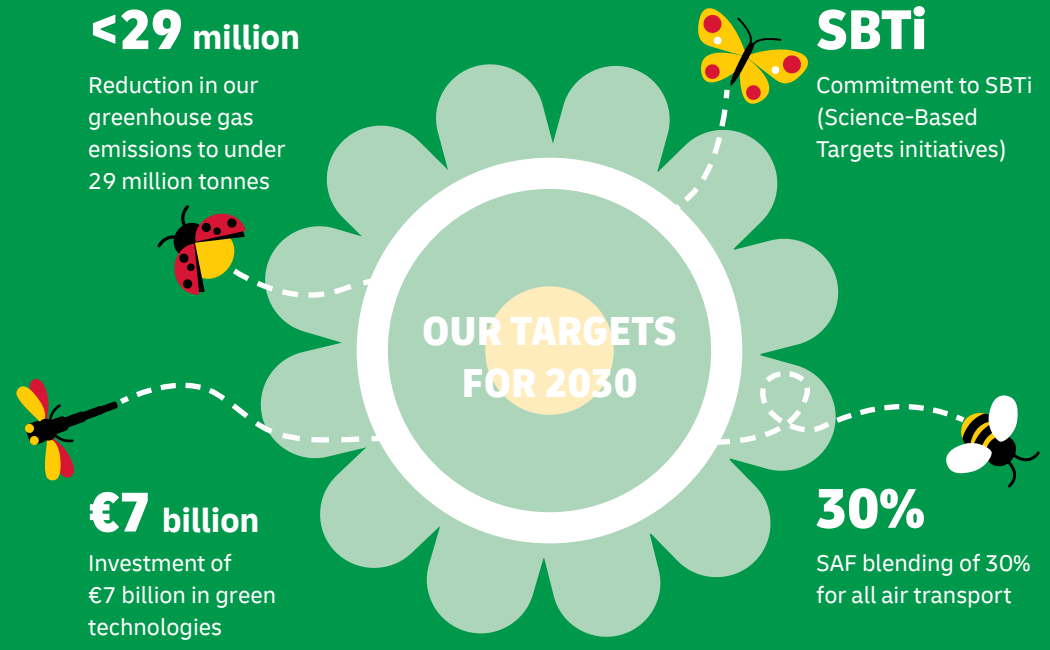
Anna Klinskova
Managing Director
DHL Express Russia



- Connecting Your World
- ▶ Sustainability
- Service Offering
- How to Ship with DHL Express
- Digitalization
- Zones and Rates

SUSTAINABILITY

Everything we do is to serve one purpose: **Connecting people, improving lives.** To fulfill this purpose, we need to make every dimension of our business sustainable. Our Sustainability Roadmap sets out our ambitions in three focus areas: Environment, Social and Governance (ESG). Find case studies and more details [here](#).



CLEAN OPERATIONS FOR CLIMATE PROTECTION

Leader in sustainable aviation
 Sustainable Airline Fuel (SAF), one of the key ways to reduce CO₂ in aviation, is already in use in our network. Two landmark collaborations signed by DHL Express with bp and Neste in 2022 are expected to save some **two million tons** of carbon dioxide emissions over the aviation fuel cycle – equivalent to the annual greenhouse gas emissions of approx. 400,000 passenger cars. In this way, we are making significant steps towards our commitment to use **30%** of SAF blending for all air transport by 2030.

Looking even further ahead, DHL is already pioneering next-generation innovations: [read more about Alice](#), the all-electric plane.

Green last-mile and line-haul
 Electrify **60%** of last-mile delivery vehicles and increase share of sustainable fuels in line haul to more than **30%** by 2030.

Carbon neutral buildings
 Design **100%** of all new buildings to be carbon neutral.

Green product portfolio
 Offer green alternatives for **100%** of all core products and solutions.

GREAT COMPANY TO WORK FOR ALL

- Attract and retain the best talent
- Strong 'Safety First' culture
- Diverse and inclusive workplace

HIGHLY TRUSTED COMPANY

- Compliance as an integral part of daily business
- Effective governance set-up across our organization
- Like-minded and compliant suppliers and partners



SERVICE OFFERING

[Connecting Your World](#)
[Sustainability](#)
[▶ Service Offering](#)
[How to Ship with DHL Express](#)
[Digitalization](#)
[Zones and Rates](#)
**Export
Services**
Enabling Your Growth
**Optional
Services**
Surcharges
**Customs
Services**

All our services are time definite and offer you secure door-to-door delivery of goods and documents to and from virtually every country and territory. Whether you need your shipments delivered at the start, middle or end of a business day, our services offer full track-and-trace visibility so you always know where your shipments are.

EXPORT SERVICES

DHL Express Worldwide

Our most popular product, DHL Express Worldwide, offers an end of business day delivery service around the world for pieces up to 70kg and shipments up to 1,000kg.

We deliver reliably and quickly to more global destinations across a single integrated network than any other express delivery company.

DHL Express 12:00

With DHL Express 12:00 you will receive your shipments before 12 noon on the next possible business day*. DHL Express 12:00

offers a money-back guarantee and allows for heavier pieces up to 70kg and shipments up to 300kg.

DHL Express 9:00 (10:30 to the USA)

Our premium time-definite service offers a delivery before 9:00/10:30 on lanes that guarantee either a next or second business day delivery*. DHL Express 9:00 is offered to the majority of business centers in Europe, the Middle East, Africa, Asia and the Americas. DHL Express 9:00/10:30 features a money-back guarantee and is suitable for pieces up to 30kg and shipments up to 300kg.

International Services**

	DHL Express Worldwide	DHL Express 12:00	DHL Express 9:00/10:30
Service description	Express door-to-door international pre 18:00 hrs delivery of document and non-document shipments	Express door-to-door international pre 12:00 hrs delivery of document and non-document shipments on the next possible business day. Priority handling	Express door-to-door international pre 9:00/10:30 hrs delivery of document and non-document shipments on the next possible business day. Priority handling and proactive notification of delivery
Money-back guarantee	No	Yes***	Yes***
Countries and territories covered	More than 220****	Available to CIS, Europe, Middle East, Asia, Latin America and USA****	Available to Europe, Middle East, Asia and USA***
Maximum piece weight	70kg	70kg	30kg
Maximum pieces per shipment	—	10	10
Maximum shipment weight	1000kg	300kg	300kg
Maximum piece dimensions	120 x 80 x 80cm	120 x 80 x 80cm	120 x 80 x 80cm
Maximum pallet weight	300 kg	Pallets not accepted	Pallets not accepted
Maximum pallet dimensions (L x W x H)	120 x 120 x 160cm	Pallets not accepted	Pallets not accepted
Additional surcharges	Optional services available upon request. Additional surcharges may apply	Premium charge 12:00 to the DHL EXPRESS WORLDWIDE rate	Premium charge 9:00/10:30 to the DHL EXPRESS WORLDWIDE rate

* DHL aims to provide your shipments with the shortest transit time possible. All references contained in this DHL Rate and Transit Guide related to pre 9:00 hrs, pre 10:30 hrs and pre 12:00 hrs delivery services mean that DHL will make every effort for time definite delivery within the timeframes outlined and due to Money-back guarantee. For more information on the average transit time please contact DHL Express office in your city or visit [express.dhl.ru](https://www.express.dhl.ru). In the event of late delivery, we guarantee a money-back of fixed charge per Premium 9:00/10:30/12:00 including fuel surcharge.

** For more information on the availability of these services in your location please contact your nearest DHL office.

*** For all shipments transported through DHL network, standard shipment restrictions and conditions (as specified in the standard delivery terms on DHL waybill) and conditions of money-back guarantee (as published at [express.dhl.ru](https://www.express.dhl.ru)) are applicable.

**** Service capability may change during the year. For more information on the availability of this service in your location please contact your nearest DHL.

A shipment is deemed unacceptable if its packaging is absent or inadequate, or if transporting the shipment would present risks of damaging equipment, other packages or injuring personnel. DHL reserves the right to either not accept or return the shipment to the shipper. These network restrictions are subject to change with 30 days' notice

SERVICE OFFERING

Export
Services

Enabling Your Growth

Optional
Services

Surcharges

Customs
Services

GLOBAL TRADE AND YOU

A series of crises has put international trade at the center of the debate about economic growth and resilience. What are the current prospects for globalization and trade? Is there cause for concern? Is trade still an attractive source of growth? We deep dived into the data and conducted a thorough, fact-based analysis – and the results might just surprise you. In partnership with NYU Stern's Center for the Future of Management and its DHL Initiative on Globalization, the 'DHL Trade Growth Atlas' examines global trade growth trends and the trade patterns of 173 countries worldwide that combined make up more than 99% of world trade, GDP and population. Despite recent shocks and worsening macroeconomic conditions in much of the world, the study overall gives an upbeat assessment of the prospects for future trade growth.

We know the value of understanding the long-term global trade landscape for navigating short-term shifts in economic and trade growth. We help our customers make sense of what this means for their business to maximize the enormous potential of globalization and international trade.

Global trade surprisingly resilient through COVID-19 pandemic

Trade likely to grow faster in 2022 and 2023 than in previous decade

Shift in mix of products traded by advanced vs. emerging economies



POWERING UP THE POTENTIAL OF INTERNATIONAL E-COMMERCE

Discover and grow

Visit express.dhl.ru to learn more about how DHL helps e-commerce companies ranging from start-ups to large enterprises, advising them on how to grow internationally. Our e-commerce focussed country guides, white papers such as 'The Ultimate B2B E-Commerce Guide', customer and trend research and market intelligence tools can enable you to better understand your customers and their shipping requirements to take the next step in your e-commerce journey.

International e-commerce

We help our customers go global with ease and speed to maximize the enormous potential of international e-commerce. DHL supports our customers' international growth with:

- Global reach
- Express delivery options
- Flexible delivery options for receivers (see 'On Demand Delivery' on page 14)
- Duty billing options and customs expertise
- Consultative advice for our customers on how to increase sales and grow cross-border

Fast, flexible and easy

Consumers expect everything 'on demand' – anytime, anywhere. DHL shipping options give customers a distinct competitive edge: over 90% of online consumers look at the available delivery options before going to the checkout, and their decision is influenced by delivery speed, flexibility and ease.



SERVICE OFFERING

 Connecting Your World

 Sustainability

 ► Service Offering

 How to Ship with DHL Express

 Digitalization

 Zones and Rates

 Export
Services

Enabling Your Growth

 Optional
Services

Surcharges

 Customs
Services

OPTIONAL SERVICES*

Shipment Insurance**

We recommend our Shipper's Interest Insurance for your valuable or personal shipments, to protect you financially in the unlikely event of physical damage or loss.

Extended Liability

DHL Express always takes the greatest of care with your documents. Unfortunately, accidents can sometimes happen and our Extended Liability service will provide you with additional peace of mind and financial protection. The fixed compensation is 35 000 RUB without VAT in case of loss, regardless of document value.

Packaging

To ensure further protection of your shipment during its transit, we recommend taking advantage of DHL packaging options that meet your requirements best. Please contact your local DHL Express office for details on options and availability. DHL courier will deliver the packaging to make the preparation of your shipment even easier. Upon your request DHL can provide additional packaging materials by pre-order of packaging items in bulk.

Proactive Tracking

When you need documented proof that your shipment has been delivered, DHL can provide a copy of the receiver's signature or delivery confirmation on DHL Express letterhead and either fax or send it to you, whichever is more convenient.

Dedicated Pickup and Delivery

If your business needs a dedicated vehicle to collect or deliver unusual shipments, or a pickup or delivery outside normal business hours or on Saturday, we can arrange this.

Shipment Preparation

At the customer's request DHL is ready to provide shipment preparation services in line with the shipper's guidelines. The service includes picking up the consolidated shipment from the customer, delivery to DHL's warehouse, DHL's waybill preparation, content selection and packaging for single-piece

shipments which do not exceed DHL's standard weight and sizes and thus require no special handling. The service is available for account customers.

On Board Courier

Some of your shipments are so time sensitive and critical that you prefer to send them with a personal courier. We offer an ON BOARD COURIER service with departure on the next day basis to the majority of domestic and international destinations.

GoGreen Climate Neutral

This service is for customers who need a reliable method to calculate their annual carbon emissions at a shipment level and subsequently offset these emissions through approved environmental programs. The whole process is verified annually by an independent body accredited by the Société Générale de Surveillance (SGS). DHL can also provide reports for either a high level estimate or a detailed carbon footprint.

Adult signature

At Customer's request, DHL will obtain a delivery signature from an adult at the stipulated delivery address. If, for local legislative reasons, proof of the receiver's age needs to be verified, DHL may need to request presentation of a valid government-issued personal identification document.

Direct Signature

If you are sending sensitive documents or high value contents you can request DHL to obtain a direct signature from the consignee or a representative at the delivery address. DHL will ensure your shipment is not re-directed, or delivered at an alternative address.

Residential Address

Customers shipping to a home or private residence can activate specific delivery options by designating the delivery address as residential. For such shipments, DHL Express will proactively notify the receiver via email or SMS about the shipment's progress. Receivers can then select the most suitable delivery option on the **On Demand Delivery** website.

* For more information on the availability of these services in your location please contact your nearest DHL office. Please make a request for these optional services when booking DHL courier. DHL reserves the right to apply additional charges for these services as well as any not shown in this guide.

** Transportation with the declared value.

DUTY BILLING SERVICES

Duty Tax Paid

At the customer's request, DHL clears the shipment at destination and arranges for the applicable import duties, taxes and regulatory charges to be invoiced to a specified DHL account at origin or third country, rather than the receiver of the shipment being billed at destination. Charges apply only in case of customs payments, duties and other fees being charged for customs declaration in the country of destination.

Duty Tax Importer

At the customer's request, DHL clears the shipment at destination and arranges for any applicable import duties, taxes and regulatory charges to be invoiced to a specified DHL account at destination. The duty tax payer will be invoiced an extra charge based on a flat rate or a percentage of the fiscal charges that were advanced.

Duty Tax Receiver

This service covers any import of a non-document shipment for which DHL has used its own credit line with Customs to advance or guarantee the payment of duties, taxes or regulatory charges on behalf of importers and consumers with whom DHL has no contract. An extra charge based on a minimum rate or a percentage of the fiscal charges that were advanced or guaranteed is billed to the duty tax payer.

SERVICE OFFERING

 Connecting Your World

 Sustainability

 ▶ Service Offering

 How to Ship with DHL Express

 Digitalization

 Zones and Rates

 Export
Services

Enabling Your Growth

 Optional
Services

Surcharges

 Customs
Services

SURCHARGES*

Fuel Surcharge

This variable surcharge is applied to the weight charge of each shipment and any transportation related surcharges. It is derived from publicly available fuel oil indices that are also shown on the DHL Express website at express.dhl.ru. The charge is calibrated every month to the oil price that was current two months prior to the billing month. The Fuel Surcharge applies to domestic and international shipments.

Remote Area

If you need to send a parcel or a document to a remote location within Russia or anywhere else in the world or to pick up a shipment in a remote location abroad, DHL will deliver the shipment you need. Special tariffs apply. The list of remote locations is available at express.dhl.ru or on pages 24-34 of this Guide.

Shipping Lithium Batteries**

DHL offers transporting of lithium batteries regardless of whether there are they recharged (Lithium Ion) or non-rechargeable (Lithium Metal), but only at adherence of rules of transporting of domestic and international transportations, managed by International Air Transport Association IATA.

Address Correction

A fixed surcharge is applied to any shipment that has an incorrect delivery address at the time of pickup and the delivery cannot be fulfilled after making efforts at the destination to determine the correct address. The Address Correction surcharge applies to domestic and international shipments.

Premium 9:00/10:30

A fixed premium charge applies to the service DHL Express 9:00/10:30 for all international and domestic shipments.

Premium 12:00

A fixed premium charge applies to the service DHL Express 12:00 for all international and domestic shipments.

Data Entry

This fixed surcharge applies for each shipment consigned with non-electronic, paper based manual waybills. Electronic shipping documentation incurs no additional charges. Will not be applied when ordering some of additional services. Please check the list of these services: <https://express.dhl.ru/en/info/dop/>.

Overweight Piece

A fixed surcharge is applied to every piece, including a pallet that exceeds a scale or volumetric weight of 70kg.

The Overweight Piece surcharge applies to domestic and international shipments.

Oversize Piece

This fixed surcharge applies to every piece, including a pallet, with a single dimension in excess of 120cm. The Oversize Piece surcharge applies to domestic and international shipments.

Non-Stackable Pallet

This fixed surcharge is applied to every pallet within a shipment that cannot be stacked, either on request by the shipper, or because of its shape, content or packaging. This surcharge applies to domestic and international shipments and does not apply to pieces below 30kg.

Dangerous Goods

Under some circumstances, DHL can carry acceptable quantities of dangerous goods or hazardous materials. Packages containing dangerous goods or hazardous materials will be assessed a service charge. Additional charges may also apply. Approved customer accounts only.

Dry Ice UN1845

A service charge will be applied for the handling and transportation of Dry Ice UN1845, which is used as a freezing agent for non-dangerous goods. Approved customer accounts only.

Security Charges

Additional surcharges may apply when shipping from or to a destination country where DHL is operating at elevated risk due to continuous state of war, civil unrest, or continuous threats from terrorism (**Elevated Risk**), or when shipping to a destination country that is subject to trade restrictions imposed by the UN Security Council (**Restricted Destination**) or national legislation such as the EEAS of the European Union or the US Office of Foreign Assets Control (OFAC).***

Emergency Situation Surcharge

This surcharge applies in exceptional cases when DHL is required to recover costs associated with temporary emergency situations beyond DHL's control which could not be reasonably anticipated at the commencement of an agreement.

* For more information on the availability of these services in your location please contact your nearest DHL office. Please make a request for these optional services when booking DHL courier. DHL reserves the right to apply additional charges for these services as well as any not shown in this guide.

** Please alert DHL Express whenever you intend to send any shipments containing Lithium Batteries. Our team of experts will be pleased to guide you through the latest IATA Dangerous Goods Regulations.

*** To get list of destination countries please contact your nearest DHL office or visit express.dhl.ru, section Surcharges for Exceptional Activities.

SERVICE OFFERING

 Connecting Your World

 Sustainability

 ► Service Offering

 How to Ship with DHL Express

 Digitalization

 Zones and Rates

 Export
Services

Enabling Your Growth

 Optional
Services

Surcharges

 Customs
Services

CUSTOMS SERVICES

- All non-document shipments require a commercial invoice or a proforma invoice.
- Our customs specialists are ready to provide advice based on about 35 years experience in customs clearance procedures in accordance with Russian customs legislation. For more information on customs services please contact your nearest DHL office.
- Supplementary clearance services are available.
- Customs-related terminal handling services are available
- An electronic customs clearance solution is available.

Customs Declaration Services and the Range of Terminal Cargo Handling Services including Loading and Unloading

The whole range of tasks related to arranging customs declaration, including analysis of shipping documentation, establishing of HS Codes, compiling of sets of documents, assistance in drawing up standard letters on behalf of the client, drawing up of customs declaration forms, as well as the range of services related to terminal cargo handling, including loading and unloading, and registration and logging of cargo at bonded warehouse storage facilities. Arrangement of customs declaration also includes submission to customs authorities of customs declaration forms, and the full set of documents and records for the goods, and attendance at both customs inspections and clearance, and at the release and return of goods from storage.

Arranging Preliminary Inspections

This is carried out where applicable for the purposes of identifying the load, ascertaining the quantity, weight, name and intended use of the goods. The preliminary inspection is necessary for the assignment of the correct HS Code for declaration of the goods to the customs authorities. It is applicable in instances where accompanying documentation lacks sufficient information required for customs declaration of the cargo, where discrepancies with the goods records declared in the shipping documents have been previously discovered.

Adjustment of information in Customs Declaration (per Customs Declaration)

DHL provides the service of compiling the adjustment to customs values document.

Specialised Forms of Inspection (veterinary, phytosanitary, DRM, health and safety)

Veterinary, phytosanitary and health and safety inspections are carried out in cases where HS Codes correspond to the relevant control measures. These are obligatory for all goods of vegetable and animal origin, as well as those goods in direct contact with humans capable of causing harm to health. DRM – is the control of fissile and radioactive materials. This

service consists of the receipt of the requisite documentation from the state supervisory authorities.

Representing of customer within additional control of functional departments of Customs if available

Representation of client's interests at conducting of inspections of declared records by customs authorities departments. Required in cases where terms for approval, or of a decision taken, have been entrusted to specialised customs departments. For example confirmation of goods code or approval or determination of goods' customs value etc.

Preparation of the set of documents

Preparation of the set of documents (beyond the scope of standard documentation), required for declaring goods to the customs authorities.

Examples being:

- Research and preparation of a technical description of goods;
- Preparation of translations;
- Maintenance of database of client's goods;
- Compiling invoices and translating their contents.

Receipt of Confirmation from Border Customs Officials of De Facto Goods Exportation

Presentation of goods to border customs officials, receipt and dispatch to client of written confirmation of de facto exportation in cases of export.

Applicable on request of the client only for cargo subject to individual goods declarations.

Arranging of Customs Declaration According to Bonded Transit Procedure*

The range of tasks needed to receive permission for the application to goods of the internal customs transit procedure, for submission of transit declaration, presentation of goods records and documents to the customs authorities, and for arranging of goods customs clearance, and release of goods from bonded storage. This service is to be preagreed.

Storage of Goods at Bonded Storage Warehouse

There is a single tariff throughout Russia for all cargo moving through DHL network. Payment is not applicable to goods storage on the first weekend or public holidays after arrival, if they fall earlier than on the fourth working day after the cargo has been placed in storage.

Physical Intervention

A surcharge applies for shipments being intercepted for physical examination by customs authorities. Arrangements for inspections may also include full or partial unloading of a vehicle, the specific marking of prototypes, mutilation of samples or the examination of shipment content.

* The service is provided by prior agreement of the parties.

HOW TO SHIP WITH DHL EXPRESS

Preparing Your Shipment

Packaging Your Shipment

Paying for Your Shipment

PREPARING YOUR SHIPMENT: AS EASY AS 1-2-3

1 Shipment weight

- Please weigh and measure your shipment.
- If you are sending a large but lightweight shipment, where its volumetric (dimensional) weight exceeds its actual weight, the cost of the shipment is calculated on the space your consignment takes up on the aircraft. This is a standard IATA method. To calculate the volumetric weight of your shipment, simply multiply the length by height by width in centimeters, then divide the total sum by 5,000 for each piece in the shipment.
- Any piece in the shipment may be re-weighed and/or re-measured by DHL to confirm this calculation.

2 Documentation required: waybill

- All shipments sent with DHL Express need to have a fully completed DHL waybill or label securely attached to each piece. This will enable the successful movement of your shipment through the DHL network. Each waybill or label is individually numbered to allow you to track your shipment from collection through to delivery.
- Your shipment may also need to be accompanied by customs documentation, such as a commercial or proforma invoice, as well as additional paperwork depending on the contents and value of the shipment and the country you are sending to.

3 Documentation required: invoice

- A commercial or proforma invoice is required when sending non-document shipments to countries and territories outside your origin country or customs union. This is essentially a declaration containing all the details of a transaction and is used by customs authorities to assess if duties or taxes are payable.
- A commercial invoice is used when goods are part of a commercial transaction or intended for resale.
- A proforma invoice is used when sending goods of no commercial value (for example, when sending samples).



HOW TO SHIP WITH DHL EXPRESS

 Connecting Your World

 Sustainability

 Service Offering

 ► How to Ship with DHL Express

 Digitalization

 Zones and Rates

Preparing Your Shipment

Packaging Your Shipment

Paying for Your Shipment

PREPARING YOUR SHIPMENT INVOICE

Your invoice will require the following details:

1. BANK DETAILS

These are the bank details that will be used for the transaction between the seller and buyer. These details are not required for non-commercial/proforma invoices.

2. DESCRIPTION

Generic or broad descriptions are no longer permitted and are likely to cause delays. Descriptions should include the items, how many there are, what they are made of, and what they will be used for. Describing items as 'samples', 'parts' or 'electronics' is not acceptable for customs classification, safety and security reasons. Instead of 'electronics', for example, use a description such as 'television'.

3. COMMODITY CODE

This is the product identification code used by the exporting country to classify the goods to be exported. It assists clearance and avoids delays.

4. COUNTRY OF MANUFACTURE/ORIGIN

This relates to the place of manufacture, not the country of export. If items are manufactured in more than one country, please list the origins.

5. TOTAL DECLARED VALUE

This is the total value of the transaction for customs purposes based on the Incoterm selected. The total declared value should include freight and insurance charges if the seller is responsible for these two elements.

6. TYPE OF EXPORT

The options are: (1) Permanent; (2) Temporary; and (3) Repair & Return.

7. INCOTERM

Insert the Incoterm that best describes the terms of the transaction. For example, DAP (Delivered At Place).

8. REASON FOR EXPORT

This could be: For Sale; For Repair; After Repair; Gift; Sample; Personal Use Not For Resale; Replacement; Intercompany Transfer; or Personal Effects.

Commercial invoice						
Bank details				Exporter		
1.				Tax ID/VAT number		
Importer (bill to)				Date		
				Waybill number		
				Invoice number		
				Exporter code		
				Receiver if different from Importer		
				Tax ID/VAT number		
				Shipment reference		
Full description of goods	Commodity code	Item quantity	Unit value [Currency]	Subtotal value [Currency]	Net weight	Country of manufacture/origin
2.	3.					4.
Freight						
Insurance						
Total declared value/currency				Total net weight/kg(s)		
5.						
Total pieces				Total gross weight/kg(s)		
6. Type of export						
7. Incoterms						
8. Reason for export						
I/We hereby certify that the information contained in this invoice is true and correct and that the contents of the shipments are as stated above.						
Position in company				Signature		
				Company stamp		



HOW TO SHIP WITH DHL EXPRESS

 Connecting Your World

 Sustainability

 Service Offering

 ► **How to Ship with DHL Express**

 Digitalization

 Zones and Rates

Preparing Your Shipment

Packaging Your Shipment

Paying for Your Shipment

PACKAGING YOUR SHIPMENT

To ensure that your shipments travel safely and securely through the DHL Express global network, it is important that they are packaged and labeled correctly.

Packaging guidelines

- If you are re-using envelopes or boxes, please ensure that old labels and markings are removed
- Securely fix a waybill to each piece in your shipment. The waybill can be thought of as the shipment's airline ticket and it will delay delivery if it becomes separated from your shipment
- The barcodes on the waybill are scanned at numerous points during your shipment's journey. Please ensure the barcode is flat and not covered by tape, shrinkwrap or strapping
- Place a waybill on the top or side of each piece in your shipment and please ensure it does not overlap the corners or edges of boxes
- Use adequate protective wrapping for fragile or delicate items and ensure they are packed as far away as possible from the corners of boxes
- To prevent injury to our employees, please pay special attention to the packaging of sharp items. There should not be any possibility of the contents piercing the packaging
- Any individual pieces over 70kg should be placed on a pallet. If you are sending a multi-piece shipment, it is not necessary to place the individual pieces on a pallet unless they exceed 70kg. For example, a shipment comprising four 25kg pieces does not have to be placed on a pallet

DHL packaging

We offer a range of high-quality DHL-branded packaging items, suitable for shipping items of all shapes and sizes.

The items available include:

- Flyer bags
- Cardboard document envelopes
- Boxes in a range of sizes
- Tubes
- Bottle boxes

For more information on the range of packaging available, please contact your DHL Account Manager or local Customer Service team.

Prohibited and Restricted Commodities

Prohibited Items

1. Animals, fish, birds (live) (Including mammals, reptiles, spiders, fish and birds).
2. Human remains or ashes in any form. This includes human embryos, placenta and ashes formed as gemstones.

3. Precious metals and bullions (in ingots, coins, etc.); precious and semi-precious stones; articles of precious metals and bullions, precious and semi-precious stones.
4. Cash (bank notes, currency notes and coins).
5. Military items: firearms and edged weapons, ready for use for their intended purpose; explosives; ammunition; shells; cartridges; explosive devices containing substances that are resistant to storage and transportation, etc.; parts, mechanisms of firearms, accessories (sight, trigger, bolts and nuts, mounts, sights, night vision devices, butts, silencers, flashlights, magazines, flash silencers and unmasking devices, etc.); other military items subject to control/licensing (items "designed or modified for military use", namely: spare parts for tanks and anti-aircraft missiles, control panels, navigation equipment, control units, ammunition counters, fire control device, instrumentation sensors speed, spare parts and components designed or modified for military use, spare parts or equipment for aircraft and helicopters designed or modified for military use, etc.).
6. Ivory and illegal goods. (Any goods considered to be illegal (as determined either by the exporting country, transit points, importing country or international law) are prohibited for carriage. E.g. pornography, pirated goods, goods certain narcotics (heroin, cocaine), counterfeit products, smoking blends containing the following ingredients: sage predictors (*Salvia divinorum*), hawaiian rose (*Argyrea nervosa*), blue lotus (*Nymphaea caerulea*).
7. Hunting trophies (animal skins, stuffed animals or birds, horns, skulls, etc.).
8. Toy and pneumatic guns.
9. Imitation or replica firearms, ammunition, explosives/explosive devices. Firearms parts. (Including all parts of firearms (e.g. rifle butts, sight, trigger mechanisms, screws/bolts etc.) manufactured for the sole purpose of creating



* Commodities are prohibited for import in Russia.

** For more information on restricted commodities please contact your nearest DHL Express office.

*** Or equivalent in RUB.

HOW TO SHIP WITH DHL EXPRESS

 Connecting Your World

 Sustainability

 Service Offering

 ► How to Ship with DHL Express

 Digitalization

 Zones and Rates

Preparing Your Shipment

Packaging Your Shipment

Paying for Your Shipment

- a functional firearm). Objects that may potentially be used as a weapon, but this is not their direct purpose (kitchen knives), including decorative products (sabres, swords, etc.) are accepted for carriage without restrictions, but the sender shall attach the certificate /passport (with stamp), that the given object is not a cold weapon.***
10. Electrical shock equipment, guns with electrical shock, electric shockers or any other items capable of producing an electric discharge with the aim of causing harm, injury or temporary disablement (directly or indirectly intended for these purposes).
 11. Medicinal Cannabis.
 12. Counterfeit goods in breach of IPR.
 13. Commemorative medals worth over 1,000 euros** of individual value, or total shipment value of over 10,000 euros** for legal entities. Commemorative medals with an individual value or total shipment value of 1,000 euros for private individuals.
 14. Valuable collectibles, including but not limited to the first editions of books or comics, trade cards, worth more than 2,000 euros** for individual item for legal entities and worth more than 2,000 euros** for individual item / total shipment value cargo to private individuals.***
 15. Watches without precious metals. Individual items worth over 10,000 euros* for legal entities and worth over 10,000 euros** for individual item/total shipment value for private individuals.***
- Restricted items.**
1. Antiques and works of art (insured or uninsured). Regardless of value, if insured, customers must provide an independent proof of value in advance of collection.
 2. Excise stamps/post stamps.
 3. Raw tobacco and tobacco products (cigarettes, cigars, cigarillos, smoking and pipe tobacco, e-cigarettes and their components).
4. Negotiable instruments in bearer form (whether cash-like or not). E.g. activated SIM cards for mobile telephones, blank or activated credit or cash dispenser cards, blank checks, event tickets whether cash-like or not, lottery tickets, money or postal orders, pre-paid phone cards, tickets (blank stock), Traveller's Cheques, vouchers/tokens, unused stamps, gift cards etc.
 5. Perishable goods: plants seedlings, fresh vegetables and fruits, mushrooms, berries, grass, frozen food and food that require temperature maintenance, not placed in a thermal box.
 6. Jewellery without precious and semi-precious stones – transportation is restricted by export/import regulations set by DHL in the origin/destination country.
 7. Watches without precious metals. Individual items worth from 5,000 to 10,000 euros** for an individual item and/or over 100,000 euros** of total shipment value for legal entities. When shipped to private individuals, the value of an individual item and/or total shipment is limited from 5,000 to 10,000 euros**. If the assessed value does not exceed specified limits, the watches are accepted without restrictions.***
 8. Valuable collectibles, including but not limited to the first editions of books or comics, trade cards, worth from 1,000 to 2,000 euros** for individual item, and the total shipment value exceeding 10,000 euros** for legal entities. When shipped to private individuals, the value of an individual item or total shipment is limited from 1,000 to 2,000 euros.**



PAYING FOR YOUR SHIPMENT

You can pay for DHL Express services either with cash or a credit card****. You can open an account with DHL Express to pay via bank transfer; and all account customers receive invoices on a pre-agreed basis. For more details, please get in touch with a Customer Service Advisor at your local DHL Express office or go to mydhl.express.dhl.

* Commodities are prohibited for import in Russia.

** For more information on restricted commodities please contact your nearest DHL Express office.

*** Or equivalent in RUB.

**** Availability of payment in cash or by credit card to the courier is limited.

DIGITALIZATION

Digitalization is one of the most important trends impacting logistics, and it is one of the key pillars of DPDHL's Strategy 2025. Through digitalization we bring benefits for our customers, our operations and our own people.

We invest continually in market-leading technologies to help our customers to manage and monitor shipments, create shipping labels, get quotes, schedule courier pickups, connect with us and more. Digitalizing our operations provides more transparency, allowing us to better anticipate and meet our customers' needs.

ON DEMAND DELIVERY

DHL's On Demand Delivery tool keeps receivers informed of shipment progress, allowing them to reschedule, reroute, release or conveniently collect from a DHL Service Point. It is an innovative, easy-to-use, mobile-friendly service, especially for residential deliveries.



ondemand.dhl.com

Designed to enhance the online shopper's experience, the service is available globally, meaning consistent service standards and a harmonized user experience.



Scheduled delivery



Signature release/
leave your signature



Alternative address



Collect from Service Point



Vacation hold



Leave with neighbor or concierge

DHL EXPRESS COMMERCE

Take your website international with DHL Express Commerce. Offer your customers all the benefits of DHL Express at your checkout in real-time. Import, manage and ship their orders quickly and efficiently with no complicated development. Add the power of DHL Express to your e-commerce business quickly and easily, giving you the competitive edge. DHL Express Commerce integrates with the biggest e-commerce platforms, including: Magento, Shopify, WooCommerce, Amazon and eBay.

Connecting your World

Sustainability

Service Offering

How to Ship with DHL Express

► Digitalization

Zones and Rates

MYDHL+

mydhl.express.dhl

MyDHL+ re-imagines the way the shipping business does business, by combining the tools and services our customers use most. With its mobile friendly and intuitive interface, customers can now import, export, schedule a pickup, track shipments and pay bills more quickly than ever – all in one visit, with one password and zero headaches. MyDHL+ makes it incredibly easy to navigate the complexities of international shipping.



DHL EXPRESS MOBILE APP

The DHL Express Mobile app lets you track your shipments and manage your deliveries all in one place. You can locate the nearest DHL Service Point for parcel drop off or collection, and quickly check shipping rates too – right on your smartphone. Advanced GPS location services and camera barcode scanning are also available. Download DHL Express Mobile today, on Android or iOS.



DIGITALIZATION

 Connecting your World

 Sustainability

 Service Offering

 How to Ship with DHL Express

 ► Digitalization

 Zones and Rates

EXPRESS.DHL.RU

Our website provides a comprehensive guide to DHL Express shipping services, as well as transport news, service updates and contact details. To make doing business with us even easier, the site features interactive tools that include online booking, tracking and a volumetric weight calculator.



ROBOTICS

Driven by rapid technological advancements and increasing supply chain complexity, robotics solutions are entering the logistics environment, boosting productivity and driving zero-defect processes.

Robots are adopting more roles at DHL Express, assisting workers with the most repetitive and labor-intensive tasks and freeing them up to do higher-order, customer-facing activities. Examples include the use of articulated robotic arms for sorting inbound packages to last-mile delivery routes. We have four such robots in use globally, with this number set to double soon.

Our robots help get couriers out on the road faster – which means your parcels get delivered faster.



DIGITAL TRUST

Logistics requires transferring data and content around the world and we embrace a responsibility to do this securely. Our standards led by our binding Corporate Rules and by our [Data Privacy Policy](#) apply throughout the DPDHL Group and are approved by the Supervisory Authorities. We maintain a comprehensive Information Security and Data Protection to ensure a high standard when managing customer information assets and personal data. We aim to provide a rapid response to any security incident via our 24x7 Cyber Defence Centre (CDC) with global coverage and our global DPO community.

DPDHL acts as controller in respect of any personal data it receives from customers and holds to effectively provide transportation services and in regard to the delivery of any shipments or documents that it processes to perform its contractual obligations. DPDHL will act as a data controller when an individual is executing their rights under privacy legislations.

CUSTOMER SHIPPING INTEGRATION

Using EDI and XML Services enables you to incorporate DHL's online shipping capabilities into your own website, warehouse or customer service application. This provides global shipment tracking while making it faster and easier to access information about transit times, rates and courier bookings.

DHL EMAILSHIP

DHL eMailShip is a suite of reusable DHL forms and step-by-step instructions that have been specially designed to make shipping quick, easy and convenient by using only your email. Ideal for small and medium businesses with multiple, decentralized users and locations. DHL eMailShip enables you to prepare and print DHL waybills. You can also receive delivery notifications and book courier pick ups via email with DHL eMailShip.

ZONES AND RATES

Calculate the Price
of Your Shipment

Optional
Services

Surcharges

Customs
Services

Service Capability
and Rating Zones

Export
Services

CALCULATE THE PRICE OF YOUR SHIPMENT



Determine which zone your destination is in (pages [20-21](#) and [24-34](#)) and whether yours is a document or non-document shipment.



Is your shipment international (page [5](#)) and how quickly do you want it to arrive?



Based on weight (page [11](#)), zone and speed, confirm your base price (page [21](#)).



Add any optional services (page [7](#)) and check if any surcharges apply (page [8](#)).

Base price + Optional services + Surcharges = **Total price**

OPTIONAL SERVICES

Optional Services*	How we charge	Additional charge
Shipment Insurance	Per shipment	1% of contents declared value, no less than 700 RUB***
Extended Liability	Per shipment	The tariff is 350 RUB***
Packaging	Per shipment	The tariff depends from type of packaging ¹
Saturday Delivery	Per shipment	The tariff is 3 000 RUB**
Proactive Tracking	Per shipment	The tariff is 440 RUB***
Dedicated Pickup and Delivery	Per shipment	Holiday pickup**** the tariff is 1 750 RUB**; and Saturday pickup: the tariff is 1 750 RUB**
Shipment Preparation	Per shipment	700 RUB***
On Board Courier	Per shipment	Tariff is Individual
Customs Clearance	Per shipment	Tariff is Individual
Duties and Taxes Paid	Per shipment	2% of the fiscal charges paid, minimum 1 300 RUB***
GOGREEN Carbon Neutral	Per weight	The tariff is 9 RUB per kg***
Direct Signature	Per shipment	Tariff is 440 RUB***
Residential Address	Per shipment	Tariff is 260 RUB**
Clearance Data Modification	Per shipment	The tariff is 4 430 RUB***
Adult signature	Per shipment	Tariff is 440 RUB***

¹ The cost of the package provided upon receipt of the shipment will be 260 rubles (except smartphone / laptop/ tablet boxes).***

* For more information on the availability of these services in your location please contact your nearest DHL office. Please make a request for these optional services when booking DHL courier. DHL reserves the right to apply additional charges for these services as well as any not shown in this guide.

** All rates are started in roubles exclusive of VAT and fuel surcharge.

*** All rates are started in roubles exclusive of VAT.

**** The extra charge will be applied to all cash/credit cards shipments.

ZONES AND RATES

Calculate the Price
of Your Shipment

Optional
Services

Surcharges

Customs
Services

Service Capability
and Rating Zones

Export
Services

SURCHARGES

Surcharges*	How we charge	Additional charge
Premium 9:00/10:30	Per shipment	The tariff is 2 700 RUB**
Premium 12:00	Per shipment	The tariff is 1 650 RUB**
Fuel Surcharge	Variable surcharge	Updated information about Fuel Surcharge is posted monthly at https://express.dhl.ru/en/info/toplivnaya-nadbavka/ . DHL Express reserves the right to change the value of Fuel Surcharge and apply it without notice. DHL Express defines the value and effective period of Fuel Surcharge at their sole discretion.
Remote Area	Per kg, per shipment	The tariff is 31 RUB per kg, minimum 1 750 RUB per shipment**
Non Stackable Pallet	Per piece	The tariff is 17 500 RUB**
Emergency Situation Surcharge	Per shipment	Information about ESS is posted at https://express.dhl.ru/en/dop/dopolnitelnye-sborny/ . ESS can be adjusted as market conditions evolve for the duration of this emergency situation.
Overweight Piece	Per piece	The tariff is 7 400 RUB**
Oversize Piece	Per piece	The tariff is 3 500 RUB**
Shipping Lithium Batteries ****	Per shipment	The tariff is 1 160 RUB***
Address Correction	Per shipment	The tariff is 870 RUB***
Elevated risk	Per shipment	The tariff is 1 750 RUB**
Data Entry	Per shipment	The tariff is 440 RUB**

CUSTOMS SERVICES

Customs services	How we charge	Additional charge
Formal clearance	Per shipment	Depends on shipment value
Bonded Storage	Per shipment	7,5 RUB/kg/day and 470 RUB/shipment/day starting the 4th business day of storage***
Bonded Transit*****	Per shipment	Individual
Export Declaration	Per shipment	Min 17 800 RUB if shipment value is more than 1 000 EUR***
Non-Routine Entry	Per shipment	Minimum 7 450 RUB
Physical Intervention	Per shipment	2 550 RUB

¹ The cost of the package provided upon receipt of the shipment will be 260 rubles (except smartphone / laptop/ tablet boxes).***

* For more information on the availability of these services in your location please contact your nearest DHL office. Please make a request for these optional services when booking DHL courier. DHL reserves the right to apply additional charges for these services as well as any not shown in this guide.

** All rates are started in roubles exclusive of VAT and fuel surcharge.

*** All rates are started in roubles exclusive of VAT.

**** The extra charge will be applied to all cash/credit cards shipments.

***** Bonded Transit (declaration and delivery) is to be pre-agreed and arranged after mutual agreement by DHL and Represented Entity made in a free written form e.g. by means of E-mails.

ZONES AND RATES

Calculate the Price
of Your Shipment

Optional
Services

Surcharges

Customs
Services

Service Capability
and Rating Zones

Export
Services

INTERNATIONAL DELIVERY

DHL delivers to over 220 countries and territories. Find the latest transit time for all products to your specific destination at express.dhl.ru.



RATE CODES FOR INTERNATIONAL DELIVERY

Russian rate zone ¹	International rate zone ¹									
	I	II	III	IV	V	VI	VII	VIII		
European Russia (Central, Northwestern, Volga Federal Districts ² , Southern, North Caucasian Federal Districts): zones 1–12	1	2	3	4	5	6	7	8		
Urals and Siberia (Urals and Siberian Federal Districts, Perm Krai): zones 13–17	1	3	3	4	5	4	7	8		
Russian Far East (Far Eastern Federal District): zones 18–19	2	4	6	7	5	3	4	8		

¹ Check the rate zone for your city within Russia on pages 24–34. Check the rate zone for your country where you plan pick up or delivery of your shipment on pages 20–21.

² Except Perm Krai.

ZONES AND RATES

- Connecting Your World
- Sustainability
- Service Offering
- How to Ship with DHL Express
- Digitalization
- ▶ Zones and Rates

Calculate the Price of Your Shipment
Optional Services
Surcharges
Customs Services
Service Capability and Rating Zones
Export Services

INTERNATIONAL DELIVERY: SERVICE CAPABILITY AND RATING ZONES*

Country	Zone	DHL Express Worldwide**	DHL Express 12:00	DHL Express 9:00	Country	Zone	DHL Express Worldwide**	DHL Express 12:00	DHL Express 9:00
Afghanistan	VIII	8			Ecuador	VIII	8		
Albania	IV	4			Egypt	VII	7		
Algeria	VII	7			El Salvador	VIII	8		
American Samoa	VIII	8			Eritrea	VIII	8		
Andorra	IV	4			Estonia	III	3	✓	
Angola	VIII	8			Eswatini	VIII	8		
Anguilla	VIII	8			Ethiopia	VIII	8		
Antigua	VIII	8			Falkland Islands	VIII	8		
Argentina	VIII	8	✓		Faroe Islands	VIII	8		
Armenia	II	2			Fiji	VIII	8		
Aruba	VIII	8			Finland	III	3	✓	
Australia	VIII	8	✓		France	III	3	✓	✓
Austria	III	3	✓	✓	French Guyana	VIII	8		
Azerbaijan	II	2			Gabon	VIII	8		
Bahamas	VIII	8			Gambia	VIII	8		
Bahrain	VII	7			Georgia	II	2		
Bangladesh	VII	7			Germany	III	3	✓	✓
Barbados	VIII	8			Ghana	VIII	8		
Belarus	I	1			Gibraltar	IV	4		
Belgium	III	3	✓	✓	Greece	IV	4	✓	
Belize	VIII	8			Greenland	VIII	8		
Benin	VIII	8			Grenada	VIII	8		
Bermuda	VIII	8			Guadeloupe	VIII	8		
Bhutan	VII	7			Guam	VIII	8		
Bolivia	VIII	8			Guatemala	VIII	8		
Bonaire	VIII	8			Guernsey	IV	4	✓	•
Bosnia and Herzegovina	IV	4			Guinea Republic	VIII	8		
Botswana	VIII	8			Guinea-Bissau	VIII	8		
Brazil	VIII	8	✓		Guinea-Equatorial	VIII	8		
Brunei	VII	7			Guyana (British)	VIII	8		
Bulgaria	IV	4	✓		Haiti	VIII	8		
Burkina Faso	VIII	8			Honduras	VIII	8		
Burundi	VIII	8			Hong Kong SAR China	VI	6		
Cambodia	VII	7			Hungary	III	3	✓	
Cameroon	VIII	8			Iceland	VIII	8	✓	
Canada	V	5	✓		India	VI	6	✓	
Canary Islands, The	IV	4			Indonesia	VII	7		
Cape Verde	VIII	8			Iran (Islamic Republic of)	VIII	8		
Cayman Islands	VIII	8			Iraq	VII	7		
Central African Republic	VIII	8			Ireland, Republic Of	III	3	✓	✓
Chad	VIII	8			Israel	VI	6		
Chile	VIII	8			Italy	III	3	✓	✓
China, People's Republic	VI	6	•		Jamaica	VIII	8		
Colombia	VIII	8			Japan	VI	6	•	
Comoros	VIII	8			Jersey	IV	4	✓	•
Congo	VIII	8			Jordan	VII	7		
Congo, The Democratic Republic of	VIII	8			Kazakhstan	I	1	✓	
Cook Islands	VIII	8			Kenya	VIII	8		
Costa Rica	VIII	8			Kiribati	VIII	8		
Cote d'Ivoire	VIII	8			Korea, Republic of (South)	VI	6	✓	
Croatia	IV	4	•		Korea, The D.P.R of (North)**	VII	7		
Cuba	VIII	8			Kosovo	IV	4		
Curacao	VIII	8			Kuwait	VII	7		
Cyprus	IV	4	•		Kyrgyzstan	I	1		
Czech Republic, The	III	3	✓	✓	Lao People's Democratic Republic	VII	7		
Denmark	IV	4	✓	✓	Latvia	III	3		
Djibouti	VIII	8			Lebanon	VII	7		
Dominica	VIII	8			Lesotho	VIII	8		
Dominican Republic	VIII	8			Liberia	VIII	8		

• – The service is available for delivery of shipments qualified as “Documents” (“Documents” shall mean “Express documents” with no commercial value). Shipments are not qualifying for “Express documents” are to be “Other shipments”. Please be advised that “Documents” and “Other shipments” are subjects to legal requirements of the country of destination.
 ✓ – The service is available for delivery of shipments qualified as “Documents” (“Documents” shall mean “Express documents” with no commercial value) and for delivery of “Other shipments” (shipments which are not qualifying for “Express documents” are to be “Other shipments”). Please be advised that “Documents” and “Other shipments” definitions are subjects to legal requirements of the country of destination.
 * Transit time is given in average working days and is valid for “Express documents” from Moscow and St. Petersburg. Add 1–2 days for other origins. Transit time may increase due to customs procedures. For more information on the availability of these services in your location please contact your nearest DHL office. Service capability may change during the year.
 ** Average transit time (working days following the day of pick up).

ZONES AND RATES

- Connecting Your World
- Sustainability
- Service Offering
- How to Ship with DHL Express
- Digitalization
- ▶ Zones and Rates

Calculate the Price of Your Shipment
Optional Services
Surcharges
Customs Services
Service Capability and Rating Zones
Export Services

INTERNATIONAL DELIVERY: SERVICE CAPABILITY AND RATING ZONES*

Country	Zone	DHL Express Worldwide**	DHL Express 12:00	DHL Express 9:00	Country	Zone	DHL Express Worldwide**	DHL Express 12:00	DHL Express 9:00
Libya	VII	7			Sao Tome and Principe	VIII	8		
Liechtenstein	III	3			Saudi Arabia	VII	7		
Lithuania	III	3	•		Senegal	VIII	8		
Luxembourg	III	3	✓	✓	Serbia, Republic of	IV	4		
Macau SAR China	VII	7			Seychelles	VIII	8		
Madagascar	VIII	8			Sierra Leone	VIII	8		
Malawi	VIII	8			Singapore	VII	7	•	•
Malaysia	VII	7	•	•	Slovakia	IV	4	✓	✓
Maldives	VIII	8			Slovenia	IV	4	✓	✓
Mali	VIII	8			Solomon Islands	VIII	8		
Malta	IV	4			Somalia	VIII	8		
Mariana Islands		8			Somaliland, Rep of (North Somalia) **	VIII	8		
Marshall Islands	VIII	8			South Africa	VIII	8	✓	
Martinique	VIII	8			South Sudan	VIII	8		
Mauritania	VIII	8			Spain	III	3	✓	•
Mauritius	VIII	8			Sri Lanka	VII	7		
Mayotte	VIII	8			St. Barthelemy	VIII	8		
Mexico	VIII	8			St. Eustatius	VIII	8		
Micronesia, Federated States of	VIII	8			St. Kitts	VIII	8		
Moldova, Republic Of	II	2			St. Lucia	VIII	8		
Monaco	III	3			St. Maarten	VIII	8		
Mongolia	VII	7			St. Vincent	VIII	8		
Montenegro, Republic of	IV	4			Sudan	VIII	8		
Montserrat	VIII	8			Suriname	VIII	8		
Morocco	VII	7	•		Sweden	III	3	✓	✓
Mozambique	VIII	8			Switzerland	III	3	✓	✓
Myanmar	VII	7			Syria	VII	7		
Namibia	VIII	8			Tahiti	VIII	8		
Nauru, Republic Of	VIII	8			Taiwan	VI	6	✓	•
Nepal	VII	7			Tajikistan	II	2		
Netherlands, The	III	3	✓	✓	Tanzania	VIII	8		
Nevis	VIII	8			Thailand	VII	7	✓	•
New Caledonia	VIII	8			Timor-Leste	VIII	8		
New Zealand	VIII	8			Togo	VIII	8		
Nicaragua	VIII	8			Tonga	VIII	8		
Niger	VIII	8			Trinidad and Tobago	VIII	8		
Nigeria	VIII	8			Tunisia	VII	7		
Niue	VIII	8			Turkey	III	3	✓	
North Macedonia	IV	4			Turkmenistan	VIII	2		
Norway	IV	4	✓		Turks and Caicos Islands	VIII	8		
Oman	VII	7			Tuvalu	VIII	8		
Pakistan	VII	7			Uganda	VIII	8		
Palau	VIII	8			Ukraine	I	1	•	
Panama	VIII	8			United Arab Emirates	VII	7		
Papua New Guinea	VIII	8			United Kingdom	III	3	✓	✓
Paraguay	VIII	8			United States Of America	V	5	✓	
Peru	VIII	8			Uruguay	VIII	2		
Philippines, The	VII	7	•	•	Uzbekistan	II	2		
Poland	III	3	✓	•	Vanuatu	VIII	8		
Portugal	IV	4	✓		Vatican City	III	3		
Puerto Rico	VIII	8			Venezuela	VIII	8		
Qatar	VII	7			Vietnam	VII	7		
Reunion, Island Of	VIII	8			Virgin Islands (British)	VIII	8		
Romania	IV	4			Virgin Islands (US)	VIII	8		
Rwanda	VIII	8			Yemen, Republic of	VII	7		
Saint Helena	VIII	8			Zambia	VIII	8		
Samoa	VIII	8			Zimbabwe	VIII	8		
San Marino	III	3							

• – The service is available for delivery of shipments qualified as “Documents” (“Documents” shall mean “Express documents” with no commercial value). Shipments are not qualifying for “Express documents” are to be “Other shipments”. Please be advised that “Documents” and “Other shipments” are subjects to legal requirements of the country of destination.

✓ – The service is available for delivery of shipments qualified as “Documents” (“Documents” shall mean “Express documents” with no commercial value) and for delivery of “Other shipments” (shipments which are not qualifying for “Express documents” are to be “Other shipments”). Please be advised that “Documents” and “Other shipments” definitions are subjects to legal requirements of the country of destination.

* Transit time is given in average working days and is valid for “Express documents” from Moscow and St. Petersburg. Add 1–2 days for other origins. Transit time may increase due to customs procedures. For more information on the availability of these services in your location please contact your nearest DHL office. Service capability may change during the year.

** Not covered by DHL IMPORT EXPRESS.

*** Average transit time (working days following the day of pick up).

ZONES AND RATES

Calculate the Price
of Your Shipment

Optional
Services

Surcharges

Customs
Services

Service Capability
and Rating Zones

Export
Services

DHL EXPRESS WORLDWIDE EXPORT

Calculating the rate:

1. Check the destination countries available for this service in the table on pages 20–21.
2. Using the table “Rate zones for domestic services” on pages 24–34 identify Russian rate zone for your city.
3. Identify rate zone number of the destination country in the table on pages 20–21.
4. Reading across numbers of rate zones for origin city and destination country using a table “Rate codes for international delivery” on page 19 identify rate code.
5. In the table on the page 23 indicate the weight nearest to the weight of your shipment.
6. Reading across from the weight indicator to rate zone will give you the rate for sending your shipment.

Example:

To send your 7 kg parcel using DHL EXPRESS Worldwide from Ekaterinburg to China:

1. Check whether this service is available to China. The answer is yes.
2. In the list of served cities identify rate zone for Ekaterinburg. It is zone 13.
3. Identify the zone number for China. It is zone VI.
4. In the table “Rate codes for international delivery” the intersection of Russian rate zone 13 and international rate zone VI gives rate code 4.
5. The intersection of rate 4 and 7 kg weight in the table on the page 22 shows the rate.
6. The rate for your shipment is 34 730 RUB.

ZONES AND RATES

Calculate the Price of Your Shipment

Optional Services

Surcharges

Customs Services

Service Capability and Rating Zones

Export Services

Service Rates*

DHL EXPRESS WORLDWIDE EXPORT

Weight ¹ in kg	Zone 1	Zone 2	Zone 3	Zone 4	Zone 5	Zone 6	Zone 7	Zone 8
Documents only up to 2kg								
0.3 ²	5 910	8 080	8 350	10 020	8 860	11 360	14 460	16 510
0.5	6 480	8 600	8 960	10 610	9 580	12 210	15 230	17 350
1	8 380	10 630	11 560	13 210	12 220	15 020	18 110	20 740
1.5	9 640	12 270	13 470	15 150	14 530	17 610	20 860	23 720
2	10 900	13 910	15 380	17 090	16 840	20 200	23 610	26 700
Documents from 2.5kg and non-documents** from 0.5kg								
0.5	7 290	9 350	9 890	11 090	10 860	13 430	16 130	18 810
1	9 440	11 640	12 520	13 770	13 690	16 370	19 320	22 870
1.5	10 590	13 180	14 270	15 620	15 850	18 930	22 160	26 000
2	11 740	14 720	16 020	17 470	18 010	21 490	25 000	29 130
2.5	12 790	16 220	17 760	19 360	20 170	23 800	27 890	32 460
3	13 780	17 720	19 520	21 210	22 290	25 960	30 720	35 670
3.5	14 770	19 220	21 280	23 060	24 410	28 120	33 550	38 880
4	15 760	20 720	23 040	24 910	26 530	30 280	36 380	42 090
4.5	16 750	22 220	24 800	26 760	28 650	32 440	39 210	45 300
5	17 740	23 720	26 560	28 610	30 770	34 600	42 040	48 510
5.5	18 730	25 060	28 070	30 140	32 340	36 730	44 750	51 640
6	19 720	26 400	29 580	31 670	33 910	38 860	47 460	54 770
6.5	20 710	27 740	31 090	33 200	35 480	40 990	50 170	57 900
7	21 700	29 080	32 600	34 730	37 050	43 120	52 880	61 030
7.5	22 690	30 420	34 110	36 260	38 620	45 250	55 590	64 160
8	23 680	31 760	35 620	37 790	40 190	47 380	58 300	67 290
8.5	24 670	33 100	37 130	39 320	41 760	49 510	61 010	70 420
9	25 660	34 440	38 640	40 850	43 330	51 640	63 720	73 550
9.5	26 650	35 780	40 150	42 380	44 900	53 770	66 430	76 680
10	27 640	37 120	41 660	43 910	46 470	55 900	69 140	79 810
10.5	28 630	38 460	43 160	45 440	48 040	58 030	71 850	82 940
11	29 620	39 800	44 700	46 970	49 610	60 160	74 560	86 070
11.5	30 610	41 140	46 200	48 500	51 180	62 290	77 270	89 200
12	31 600	42 480	47 700	50 030	52 750	64 420	80 000	92 330
12.5	32 590	43 820	49 200	51 560	54 270	66 550	82 710	95 460
13	33 580	45 160	50 700	53 090	55 790	68 680	85 420	98 590
13.5	34 570	46 500	52 200	54 620	57 310	70 810	88 130	101 720
14	35 560	47 840	53 700	56 150	58 830	72 940	90 840	104 850
14.5	36 550	49 180	55 200	57 680	60 350	75 070	93 550	107 980
15	37 540	50 520	56 700	59 210	61 870	77 200	96 260	111 110
15.5	38 530	51 860	58 200	60 740	63 390	79 330	98 570	114 240
16	39 520	53 200	59 700	62 270	64 900	81 460	100 880	117 370
16.5	40 510	54 540	61 200	63 800	66 420	83 590	103 190	120 500
17	41 500	55 880	62 700	65 300	67 940	85 720	105 500	123 630
17.5	42 490	57 220	64 200	66 790	69 460	87 850	107 810	126 760
18	43 480	58 560	65 700	68 290	70 980	89 980	110 120	129 890
18.5	44 470	59 900	67 200	69 790	72 500	92 110	112 430	133 020
19	45 460	61 240	68 700	71 290	74 020	94 240	114 740	136 150
19.5	46 450	62 580	70 200	72 790	75 540	96 370	117 050	139 280
20	47 440	63 920	71 700	74 290	77 060	98 500	119 360	142 410
+ 0.5	810	920	1 000	1 130	1 180	1 380	1 760	1 980
30	60 640	74 920	85 260	90 110	94 470	112 700	144 340	166 410
+ 1.00	1 090	1 350	1 640	1 680	1 970	2 290	3 000	3 610
40	71 540	88 420	101 660	106 910	114 170	135 600	174 340	202 510
+ 1.00	1 090	1 350	1 640	1 680	1 970	2 290	3 000	3 610
50	82 440	101 920	118 060	123 710	133 870	158 500	204 340	238 610
+ 1.00	1 090	1 350	1 640	1 680	1 970	2 290	3 000	3 610
70	104 240	128 920	150 860	157 310	173 270	204 300	264 340	310 810
+ 1.00	1 540	1 880	2 250	2 320	2 620	3 080	3 840	4 080
300	458 440	561 320	668 360	690 910	775 870	912 700	1 147 540	1 249 210
+ 1.00	1 700	2 080	2 490	2 570	2 880	3 390	4 230	4 490
1000	1 648 440	2 017 320	2 411 360	2 489 910	2 791 870	3 285 700	4 108 540	4 392 210

Available up to 1000 kg shipment weight

¹ DHL's shipment charges are calculated according to the higher of actual or volumetric weight of each cargo place. The weight shall be rounded up to the value divisible by 0.5 kg (for weighing less 30 kg) and 1 kg (for shipments weighing more than 30 kg). For example: 2.1 kg shall be rounded up to 2.5 kg, and 31.2 kg shall be rounded up to 32 kg.

² Attention! The minimal chargeable weight for the delivery of documents with no commercial value at DHL EXPRESS WORLDWIDE rates shall be 0.3 kg. For all other shipments the minimum chargeable weight is 0.5 kg.

* All rates are stated in roubles exclusive of VAT and fuel surcharge. Rates for specific weights not shown in the table above are available on request in your nearest DHL office. DHL is entitled to change its rates on its sole discretion.

** Shipments qualified as "Documents" shall mean "Express documents" with no commercial value. Shipments which are not qualifying for "Express documents" are to be "Other shipments". Please be advised that "Documents" and "Other shipments" definitions are subjects to legal requirements of the country of destination.

ZONES AND RATES

Calculate the Price
of Your Shipment

Optional
Services

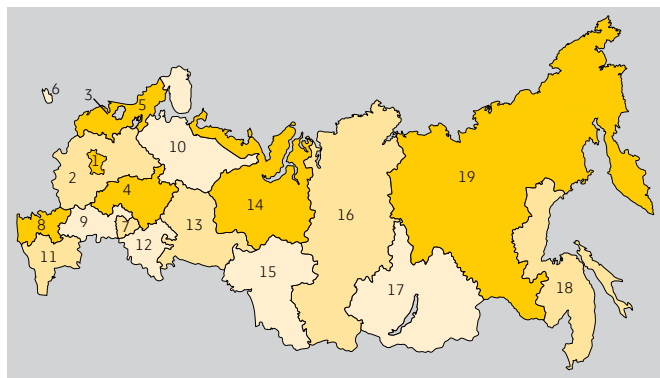
Surcharges

Customs
Services

Service Capability
and Rating Zones

Export
Services

TARIFF ZONES



- | | |
|---|---|
| 1. Moscow, Moscow Oblast | 11. Astrakhan Oblast, North Caucasian Federal District |
| 2. Central Federal District (except Moscow and Moscow Oblast), Vologda Oblast | 12. Orenburg Oblast, Republic of Bashkortostan* |
| 3. Saint Petersburg | 13. Perm Krai*, Sverdlovsk, Chelyabinsk* and Tyumen |
| 4. Kirov, Nizhniy Novgorod, Penza Oblast, Mary El Republic, Mordovia, Tatarstan, Udmurt and Chuvash Republics | 14. Yamalo-Nenets Autonomous Okrug, Khanty-Mansi Autonomous Okrug and Kurgan Oblasts |
| 5. Novgorod, Pskov, Leningrad* Oblasts, Republic of Karelia | 15. Novosibirsk, Omsk, Tomsk* Oblasts, Altay Krai, Altai Republic |
| 6. Kaliningrad Oblast | 16. Krasnoyarsk Krai*, Tuva Republic, Republic of Khakassia, Kemerovo Oblast |
| 7. Samara Oblast | 17. Irkutsk Oblast, Zabaykalsky Krai, Buryat Republic |
| 8. Krasnodar Krai*, Rostov Oblast, Republic of Adygea, Republic of Kalmykia | 18. Khabarovsk Krai, Jewish Autonomous Oblast, Sakhalin Oblast, Primorsky Krai |
| 9. Saratov, Ulyanovsk, Volgograd Oblasts | 19. Kamchatka Krai, Amur and Magadan Oblasts, Sakha Republic, Chukotka Autonomous Okrug |
| 10. Arkhangelsk and Murmansk Oblasts, Komi Republic | |

* Most of the cities in mentioned regions belong to stated tariff zone. Exact information is mentioned in the table "Rate zones for domestic services".

** Service capability may change during the year. For more information on the availability of these services in your location please contact your nearest DHL office. Transit time is given in average working days and is valid for shipments from Moscow.

*** DHL aims to provide your shipments with the shortest transit time possible. All references contained in this DHL Rate and Transit Guide related to pre 9:00 hrs, pre 10:30 hrs and pre 12:00 hrs delivery services mean that DHL will make every effort in ensuring time definite delivery. For more information on the average transit time please contact DHL Express office in your city or visit express.dhl.ru. In the event of late delivery, we guarantee a money-back of fixed charge per Premium 9:00/10:30/12:00. Please note that for all shipments transported through DHL network, standard shipment restrictions and conditions (as specified in the standard delivery terms on DHL waybill) and conditions of money-back guarantee (as published at express.dhl.ru) are applicable.

ZONES AND RATES

Calculate the Price of Your Shipment

Optional Services

Surcharges

Customs Services

Service Capability and Rating Zones

Export Services

RATE ZONES FOR DOMESTIC SERVICES*

Country/Territory	Tariff Zone	Remote Area
Ababurovo (Leninskiy distr., Moscow Region)	1	
Abakan (Republic of Khakassia)	16	
Abinsk (Krasnodar Territory)	8	
Achinsk (Krasnoyarsk Territory)	16	✓
Adler (Krasnodar Territory)	11	
Adygeysk (Krasnodar Territory)	8	
Aeroport (Tomsk Region)	15	
Afipskiy (Krasnodar Territory)	8	
Agidel (Republic of Bashkortostan)	12	✓
Agryz (Republic of Tatarstan)	4	✓
Akhtyrskiy (Krasnodar Territory)	8	✓
Akinshino (Naro-Fominsky distr., Moscow Region)	1	
Aksay (Rostov-on-Don Region)	8	
Akulovo (Moscow Region)	1	
Alabushevo (Moscow Region)	1	
Alapaevsk (Sverdlovsk Region)	13	✓
Aleksandrov (Vladimir Region)	2	✓
Aleksandrovo (Podolsky distr., Moscow Region)	1	
Aleksandrovsk (Perm Territory)	13	✓
Alekseevka (Alekseevskiy distr., Belgorod Region)	2	✓
Alekseevka (Kinel, Samara Region)	7	
Aleksin (Tula Region)	2	✓
Aleksandrovka (Zelenograd, Moscow)	1	
Aleksandrovskaya (Kurortnyi distr., St. Petersburg)	3	
Alexandrovskaya (Pushkinskiy distr., St. Petersburg)	3	
Aleysk (Altai Territory)	15	✓
Alkhimovo (Podolsky distr., Moscow Region)	1	
Almet'yevsk (Republic of Tatarstan)	4	
Anapa (Krasnodar Territory)	8	
Andreevskoe (Leninskiy distr., Moscow Region)	1	
Andreevskoe (Podolsky distr., Moscow Region)	1	
Angarsk (Irkutsk Region)	17	
Aniva (Sakhalin Region)	18	
Ankudinovo (Naro-Fominsky distr., Moscow Region)	1	
Anna (Voronezh Region)	2	✓
Anzhero-Sudzhensk (Kemerovo Region)	16	✓
Aprelevka (Naro-Fominsk distr., Moscow Region)	1	
Apsheronsk (Krasnodar Territory)	8	✓
Aramil (Sverdlovsk Region)	13	
Arkhangelsk (Arkhangelsk Region)	10	
Arkhangelskoe (Naro-Fominsk distr., Moscow Region)	1	✓
Armavir (Krasnodar Territory)	8	
Armazovo (Podolsky distr., Moscow Region)	1	
Arsk (Republic of Tatarstan)	4	
Artemovskiy (Sverdlovsk Region)	13	✓
Arzamas (Nizhniy Novgorod Region)	4	✓
Asbest (Sverdlovsk Region)	13	✓
Asha (Chelyabinsk Region)	12	✓
Astrakhan (Astrakhan Region)	11	

Country/Territory	Tariff Zone	Remote Area
Atamanovka (Trans-Baikal Territory)	17	
Atkarsk (Saratov Region)	9	✓
Aznakaevo (Republic of Tatarstan)	4	
Azov (Rostov-on-Don Region)	8	
Bachurino (Leninskiy distr., Moscow Region)	1	
Bagrationovsk (Kaliningrad Region)	6	✓
Baklanovo (Podolsky distr., Moscow Region)	1	
Baksan (Kabardino-Balkarian Republic)	11	✓
Balabanovo (Kaluga Region)	2	
Balakhna (Nizhniy Novgorod Region)	4	
Balakovo (Saratov Region)	9	✓
Balashikha (Moscow Region)	1	
Baltiysk (Kaliningrad Region)	6	✓
Baranovo (Naro-Fominsky distr., Moscow Region)	1	
Barnaul (Altai Territory)	15	
Barsovo (Khanty-Mansi Autonomous Area – Yugra)	14	
Barysh (Ulyanovsk Region)	9	✓
Bataysk (Rostov-on-Don Region)	8	
Belaya Kalitva (Rostov-on-Don Region)	8	✓
Belebej (Republic of Bashkortostan)	12	✓
Belgorod (Belgorod Region)	2	
Belogorsk (Amur Region)	19	✓
Beloozerskiy (Voskresenskiy distr., Moscow Region)	1	✓
Belorechensk (Krasnodar Territory)	8	
Beloretsk (Republic of Bashkortostan)	14	✓
Belousovo (Kaluga Region)	2	
Belousovo (Naro-Fominsky distr., Moscow Region)	1	✓
Belovo (Kemerovo Region)	16	✓
Beloyarskiy (Sverdlovsk Region)	13	✓
Belozersk (Vologda Region)	2	✓
Beliy (Krasnodar Territory)	8	
Belyy Yar (Khanty-Mansi Autonomous Area – Yugra)	14	
Berds (Novosibirsk Region)	15	
Berezniki (Perm Territory)	13	
Berezovka (Krasnoyarsk Territory)	16	
Berezovka (Republic of Bashkortostan)	12	
Berezovskiy (Kemerovo Reg)	16	✓
Berezovskiy (Sverdlovsk Region)	13	
Beslan (Republic of North Ossetia – Alanian)	11	
Biofabrika (Orel Region)	2	
Birobidzhan (Jewish Autonomous Region)	18	✓
Birsk (Republic of Bashkortostan)	12	✓
Biysk (Altai Territory)	15	✓
Blagoveschensk (Amur Region)	19	
Blagoveschensk (Republic of Bashkortostan)	12	✓
Bobrov (Voronezh Region)	2	✓
Boodaybo (Irkutsk Region)	17	✓
Bogdanovich (Sverdlovsk Region)	13	✓
Bogorodsk (Nizhny Novgorod Region)	4	

- Service is available
- ✓ Additional tariff is applicable for remote area services.

ZONES AND RATES

Calculate the Price of
Your Shipment

Optional
Services

Surcharges

Customs
Services

Service Capability and
Rating Zones

Export
Services

RATE ZONES FOR DOMESTIC SERVICES*

Country/Territory	Tariff Zone	Remote Area
Bogotol (Krasnoyarsk Territory)	16	✓
Bolkhov (Orel Region)	2	✓
Bologoe (Tver Region)	2	✓
Bolshoe Pokrovskoe (Naro-Fominsky distr., Moscow Region)	1	
Bolshoe Svinorye (Naro-Fominsky distr., Moscow Region)	1	
Bolshoy Kamen (Primorye Territory)	18	
Bor (Nizhniy Novgorod Region)	4	
Bor (Volkhovskiy distr., Leningrad Region)	3	✓
Borisoglebsk (Voronezh Region)	2	✓
Borodino (Krasnoyarsk Territory)	16	✓
Borovichi (Novgorod Region)	5	✓
Borovsk (Kaluga Region)	2	
Botakovo (Naro-Fominsky distr., Moscow Region)	1	
Bratsk (Irkutsk Region)	17	
Bronnitsy (Moscow Region)	1	✓
Bryansk (Bryansk Region)	2	
Bugulma (Republic of Tatarstan)	4	
Buguruslan (Orenburg Region)	7	✓
Burtsevo (Leninskiy distr., Moscow Region)	1	
Burtsevo (Naro-Fominsky distr., Moscow Region)	1	
Butovo (Moscow)	1	
Buy (Kostroma Region)	2	✓
Buzuluk (Orenburg Region)	12	✓
Bylovo (Podolskiy distr., Moscow Region)	1	✓
Chapaevsk (Samara Region)	7	✓
Chaplygin (Lipetsk Region)	2	✓
Chaykovskiy (Udmurtian Republic)	4	✓
Chebarkul (Chelya binsk Region)	13	
Cheboksary (Chuvash Republic)	4	
Chekhov (Moscow Region)	1	
Chelyabinsk (Chelyabinsk Region)	13	
Cherepovets (Vologda Region)	2	
Cherepovo (Leninskiy distr., Moscow Region)	1	
Cherkessk (Karachayevo-Circassian Republic)	11	✓
Chernogorsk (Republic of Khakassia)	16	
Chernomorskiy (Krasnodar Territory)	8	✓
Chernyakhovsk (Kaliningrad Region)	6	✓
Chistopol (Republic of Tatarstan)	4	✓
Chita (Trans-Baikal Territory)	17	
Chudovo (Novgorod Region)	5	✓
Chufarovo (Ulyanovsk Region)	9	✓
Chusovoy (Perm Territory)	13	✓
Dagomys (Krasnodar Territory)	11	
Dankov (Lipetsk Region)	2	✓
Davlekanovo (Republic of Bashkortostan)	12	✓
Davydkovo (Naro-Fominsky distr., Moscow Region)	1	
Davydovo (Podolskiy distr., Moscow Region)	1	
Dedovsk (Moscow Region)	1	
Demyanovo (Klin distr., Moscow Region)	1	

Country/Territory	Tariff Zone	Remote Area
Desna (Leninskiy distr., Moscow Region)	1	
Desnogorsk (Smolensk Region)	2	✓
Devyat'skoe (Podolskiy distr., Moscow Region)	1	
Dimitrovgrad (Ulyanovsk Region)	9	✓
Divnogorsk (Krasnoyarsk Territory)	16	
Dmitrov (Moscow Region)	1	
Dmitrovka (Moscow)	1	✓
Dolgoprudniy (Moscow Region)	1	
Dolinsk (Sakhalin Region)	18	✓
Domodedovo (Moscow Region)	1	
Donetsk (Rostov-on-Don Region)	8	
Donskoy (Tula Region)	2	✓
Donskoy (Rostov-on-Don Region)	8	
Dubna (Moscow Region)	1	
Dubrovka (Moscow Region)	1	
Dudinka (Krasnoyarsk Territory)	16	✓
Dudkino (Leninskiy distr., Moscow Region)	1	
Dyat'kovo (Bryansk Region)	2	✓
Dyurtyuli (Republic of Bashkortostan)	12	✓
Dzerzhinsk (Irkutsk Region)	17	
Dzerzhinsk (Nizhniy Novgorod Region)	4	
Dzerzhinskiy (Moscow Region)	1	
Efremov (Tula Region)	2	✓
Egoryevsk (Moscow Region)	1	
Ekaterinburg (Sverdlovsk Region)	13	
Elabuga (Republic of Tatarstan)	4	
Elektrogorsk (Moscow Region)	1	✓
Elektrostal (Moscow Region)	1	
Elektrougli (Moscow Region)	1	
Elets (Lipetskaya Region)	2	✓
Elista (Republic of Kalmykia)	8	✓
Elizarovo (Naro-Fominsky distr., Moscow Region)	1	
Elizovo (Kamchatka Territory)	19	✓
Emelyanovo (Krasnoyarsk Territory)	16	
Emelyanovo (Vologda Region)	2	
Enem (Krasnodar Territory)	8	
Engels (Saratov Region)	9	
Eniseysk (Krasnoyarsk Territory)	16	✓
Ermolino (Kaluga Region)	2	
Essentuki (Stavropol Territory)	11	
Evseevo (Leninskiy distr., Moscow Region)	1	
Eysk (Krasnodar Territory)	8	
Filimonki (Leninskiy distr., Moscow Region)	1	
Filino (Podolskiy distr., Moscow Region)	1	
Fokino (Primorye Territory)	18	
Fokino (Bryansk Region)	2	✓
Fominskoe (Naro-Fominsky distr., Moscow Region)	1	
Frolovo (Volgograd Region)	9	✓
Fryazino (Moscow Region)	1	

- Service is available
- ✓ Additional tariff is applicable for remote area services.

ZONES AND RATES

Calculate the Price of Your Shipment

Optional Services

Surcharges

Customs Services

Service Capability and Rating Zones

Export Services

RATE ZONES FOR DOMESTIC SERVICES*

Country/Territory	Tariff Zone	Remote Area
Gagarin (Smolensk Region)	2	✓
Gatchina (Leningrad Region)	3	
Gavrilov-Yam (Yaroslavl Region)	2	✓
Gay (Orenburg Region)	12	✓
Gazoprovod (Moscow Region)	1	
Gelendzhik (Krasnodar Territory)	8	
Georgievsk (Stavropol Territory)	11	✓
Glazov (Udmurtian Republic)	4	✓
Glazunovka (Orel Region)	2	✓
Golenishchevo (Leninskiy distr., Moscow Region)	1	
Golitsyno (Moscow Region)	1	✓
Golokhvastovo (Naro-Fominsky distr., Moscow Region)	1	✓
Golokhvastovo (Moscow)	1	✓
Goluboy Zaliv (Novosibirsk Region)	15	
Gorchakovo (Moscow)	1	
Gorelovo (St. Petersburg)	3	
Gorno-Altaysk (Republic of Altai)	15	✓
Gorodets (Nizhny Novgorod Region)	4	
Gorodishche (Leninskiy distr., Moscow Region)	1	
Gorodishche (Tver Region)	2	✓
Gorodishche (Voskresenskiy distr., Moscow Region)	1	
Gorohovets (Nizhniy Novgorod Region)	4	✓
Gorskaya (St. Petersburg)	3	
Goryachiy Klyuch (Krasnodar Territory)	8	✓
GOSNIIGA (Moscow Region)	1	
Govorovo (Moscow Region)	1	
Grayvoron (Belgorod Region)	2	✓
Grozniy (Chechen Republic)	11	
Gryazi (Lipetsk Region)	2	✓
Gryazovets (Vologda Region)	2	✓
Gubakha (Perm Territory)	13	✓
Gubkin (Belgorod Region)	2	✓
Gubkino (Leninskiy distr., Moscow Region)	1	
Gubkinskiy (Yamal-Nenets Autonomous Area)	14	✓
Gubtsevo (Moscow Region)	1	
Gudermes (Chechen Republic)	11	
Gukovo (Rostov-on-Don Region)	8	✓
Gulkevichi (Krasnodar Territory)	8	
Guryevsk (Kaliningrad Region)	6	
Gusev (Kaliningrad Region)	6	✓
Gus-Khrustalnyi (Vladimir Region)	2	✓
Gvardeysk (Kaliningrad Region)	6	✓
Ilanskiy (Krasnoyarsk Territory)	16	✓
Ilskiy (Krasnodar Territory)	8	
Ilyichevka (Moscow)	1	
Ilyino (Moscow)	1	✓
Inta (Komi Republic)	10	✓
Inza (Ulyanovsk Region)	9	✓
Irbit (Sverdlovsk Region)	13	✓

Country/Territory	Tariff Zone	Remote Area
Irkutsk (Irkutsk Region)	17	
Isakovo (Moscow)	1	✓
Ishimbay (Republic of Bashkortostan)	12	
Iskitim (Novosibirsk Region)	15	
Istra (Moscow Region)	1	
Ivangorod (Leningrad Region)	5	✓
Ivanovo (Podolsky distr., Moscow Region)	1	
Ivanovo (Ivanovo Region)	2	
Ivanovskoe (Naro-Fominsky distr., Moscow Region)	1	
Ivanteevka (Moscow Region)	1	
Izhevsk (Udmurtian Republic)	4	
Izluchinsk (Khanty-Mansi Autonomous Area – Yugra)	14	
Izobilnyy (Stavropol Territory)	11	✓
Izvarino (Moscow Region)	1	
Izvarinsky shkolyy (Moscow Region)	1	
Kachkanar (Sverdlovsk Region)	13	✓
Kadnikov (Vologda Region)	2	✓
Kalashnikovo (Tver Region)	2	✓
Kaliningrad (Kaliningrad Region)	6	
Kaluga (Kaluga Region)	2	
Kamenka (Leningrad Region)	3	
Kamenka (Leninskiy distr., Moscow Region)	1	
Kamenka (Moscow)	1	✓
Kamenka (Naro-Fominsky distr., Moscow Region)	1	
Kamenka (Orel Region)	2	
Kamenka (Volkhovskiy distr., Leningrad Region)	3	✓
Kamenka (Zelenograd distr., Kaliningrad Region)	6	
Kamennogorsk (Leningrad Region)	5	✓
Kamensk-Shakhtinskiy (Rostov-on-Don Region)	8	
Kamensk-Uralskiy (Sverdlovsk Region)	13	
Kameshkovo (Vladimir Region)	2	✓
Kamyshin (Volgograd Region)	9	✓
Kamyshlov (Sverdlovsk Region)	13	✓
Kanash (Chuvash Republic)	4	✓
Kansk (Krasnoyarsk Territory)	16	✓
Karabanovo (Noginsky distr., Moscow Region)	1	✓
Karabulak (Republic of Ingushetia)	11	✓
Karachev (Bryansk Region)	2	✓
Karakashevo (Leninskiy distr., Moscow Region)	1	
Karpinsk (Sverdlovsk Region)	13	✓
Kartmazovo (Leninsky distr., Moscow Region)	1	
Kashira (Moscow Region)	1	✓
Kasimov (Ryazan Region)	2	✓
Kasli (Sverdlovsk Region)	13	
Kaspiysk (Republic of Daghestan)	11	
Kazan (Republic of Tatarstan)	4	
Kemerovo (Kemerovo Region)	16	
Khabarovsk (Khabarovsk Territory)	18	
Khadyzhensk (Krasnodar Territory)	8	✓

- Service is available
- ✓ Additional tariff is applicable for remote area services.

ZONES AND RATES

Calculate the Price of Your Shipment

Optional Services

Surcharges

Customs Services

Service Capability and Rating Zones

Export Services

RATE ZONES FOR DOMESTIC SERVICES*

Country/Territory	Tariff Zone	Remote Area
Khanty-Mansiysk (Khanty-Mansi Autonomous Area – Yugra)	14	
Kharyino (Leninskiy distr., Moscow Region)	1	
Khatminki (Naro-Fominsky distr., Moscow Region)	1	
Khimki (Moscow Region)	1	
Kholmsk (Sakhalin Region)	18	✓
Khomutovo (Balashikhinsky distr., Moscow Region)	1	
Khomutovo (Stupinskiy distr., Moscow Region)	1	✓
Khotkovo (Moscow Region)	1	✓
Khotynets (Orel Region)	2	✓
Kinel (Samara Region)	7	
Kineshma (Ivanovo Region)	2	✓
Kingisepp (Leningrad Region)	5	✓
Kirillov (Vologda Region)	2	✓
Kirishi (Leningrad Region)	3	✓
Kirov (Kirov Region)	4	
Kirov (Kaluga Region)	2	✓
Kirovgrad (Sverdlovsk Region)	13	✓
Kirovo-Chepetsk (Kirov Region)	4	
Kirovsk (Murmansk Region)	10	✓
Kirovsk (Kirovsk distr., Leningrad Region)	3	✓
Kirpichnogo Zavoda (Klin distr., Moscow Region)	1	✓
Kirpichnogo Zavoda (Naro-Fominsky distr., Moscow Region)	1	
Kirpichnyy (Sverdlovsk Region)	13	
Kiselevka (Leninskiy distr., Moscow Region)	1	
Kislovodsk (Stavropol Territory)	11	
Klimovka (Moscow)	1	✓
Klimovo (Bryansk Region)	2	✓
Klimovsk (Moscow Region)	1	
Klin (Moscow Region)	1	
Klintsy (Bryansk Region)	2	✓
Klokovo (Moscow)	1	
Knutovo (Leninskiy distr., Moscow Region)	1	
Kogalym (Khanty-Mansi Autonomous Area – Yugra)	14	✓
Kokhma (Ivanovo Region)	2	
Kola (Murmansk Region)	10	
Kolchugino (Vladimir Region)	2	✓
Kolomna (Moscow Region)	1	
Kolotilovo (Podolskiy distr., Moscow Region)	1	✓
Kolpino (St. Petersburg)	3	
Kommunar (Leningrad Region)	3	
Kommunarka (Moscow Region)	1	
Komsomolskiy (Republic of Mordovia)	4	✓
Komsomolsk-na-Amure (Khabarovsk Territory)	18	
Konakovo (Tver Region)	2	✓
Konakovo (Moscow)	1	✓
Koncheevo (Leninskiy distr., Moscow Region)	1	
Kondopoga (Republic of Karelia)	5	✓
Kondrovo (Kaluga Region)	2	
Konstantinovsk (Rostov on-Don Region)	8	✓

Country/Territory	Tariff Zone	Remote Area
Konyushkovo (Naro-Fominsky distr., Moscow Region)	1	
Kopeysk (Chelyabinsk Region)	13	
Korenevo (Lyuberetskiy distr., Moscow Region)	1	
Korenovsk (Krasnodar Territory)	8	✓
Korkino (Chelyabinsk Region)	13	
Korocho (Belgorod Region)	2	✓
Korolev (Moscow Region)	1	
Korsakov (Sakhalin Region)	18	
Koryazhma (Arhangelsk Region)	10	✓
Kosino (Moscow)	1	
Kosino-Ukhtomskiy (Moscow Region)	1	
Kostishovo (Podolskiy distr., Moscow Region)	1	
Kostomuksha (Republic of Karelia)	5	✓
Kostroma (Kostroma Region)	2	
Kotelniki (Moscow Region)	1	
Kotelnikovo (Gatchina distr., Leningrad Region)	3	
Kotlas (Arhangelsk Region)	10	✓
Kotovsk (Tambov Region)	2	
Kovdor (Murmansk Region)	10	✓
Kovrov (Vladimir Region)	2	✓
Kozelsk (Kaluga Region)	2	✓
Kozhukhovo (Moscow)	1	
Kozlovka (Chuvash Republic)	4	✓
Kozlovo (Kaluga Region)	2	
Kozmodemyansk (Republic of Mari El)	4	✓
Krasnaya Gora (Tver Region)	2	
Krasnaya Pakhra (Podolskiy distr., Moscow Region)	1	✓
Krasnaya Polyana (Krasnodar Territory)	11	✓
Krasnaya Volya (Krasnodar Territory)	11	✓
Krasnoarmeysk (Moscow Region)	1	✓
Krasnoarmeyskiy (Krasnodar Territory)	8	
Krasnodar (Krasnodar Territory)	8	
Krasnoe (Podolskiy distr., Moscow Region)	1	✓
Krasnoe Selo (St. Petersburg)	3	
Krasnogorsk (Moscow Region)	1	
Krasnokamsk (Perm Territory)	13	
Krasnoselskiy (Krasnodar Territory)	8	
Krasnoturinsk (Sverdlovsk Region)	13	✓
Krasnoufimsk (Sverdlovsk Region)	13	✓
Krasnouralsk (Sverdlovsk Region)	13	✓
Krasnoyarsk (Krasnoyarsk Territory)	16	
Krasnozavodsk (Moscow Region)	1	✓
Krasnoznamensk (Kaliningrad Region)	6	✓
Krasnoznamensk (Moscow Region)	1	✓
Krasny Sulin (Rostov-on-Don Region)	8	
Krasnye Gorki (Naro-Fominsky distr., Moscow Region)	1	
Krasnyy (Krasnodar Territory)	8	
Krasnyy Bor (Ulyanovsk Region)	9	✓
Krekshino (Naro-Fominsky distr., Moscow Region)	1	

- Service is available
- ✓ Additional tariff is applicable for remote area services.

ZONES AND RATES

Calculate the Price of Your Shipment

Optional Services

Surcharges

Customs Services

Service Capability and Rating Zones

Export Services

RATE ZONES FOR DOMESTIC SERVICES*

Country/Territory	Tariff Zone	Remote Area
Kremenki (Ulyanovsk Region)	9	✓
Kresty (Moscow)	1	✓
Krivosheino (Naro-Fominsky distr., Moscow Region)	1	
Kromy (Orel Region)	2	✓
Kronshtadt (St. Petersburg)	3	
Kropotkin (Krasnodar Territory)	8	
Krutaya Gora (Orel Region)	2	
Krymsk (Krasnodar Territory)	8	
Kryukovo (Zelenograd, Moscow)	1	
Kstovo (Nizhniy Novgorod Region)	4	
Kubinka (Odintsovo distr., Moscow Region)	1	✓
Kukshevo (Naro-Fominsky distr., Moscow Region)	1	
Kulebaki (Nizhniy Novgorod Region)	4	✓
Kumertau (Republic of Bashkortostan)	12	✓
Kungur (Perm Territory)	13	✓
Kurchatov (Kursk Region)	2	✓
Kurgan (Kurgan Region)	14	
Kurganinsk (Krasnodar Territory)	8	✓
Kurkino (Moscow)	1	
Kurovskoe (Moscow Region)	1	✓
Kursk (Kursk Region)	2	
Kushva (Sverdlovsk Region)	13	✓
Kutuzovo (Zelenograd, Moscow)	1	
Kuvekino (Leninskiy distr., Moscow Region)	1	
Kuvshinovo (Vologda Region)	2	
Kuznetsk (Penza Region)	4	✓
Kyshtym (Chelyabinsk Region)	13	
Kyzyl (Republic of Tuva)	16	✓
Labinsk (Krasnodar Territory)	8	✓
Ladushkin (Kaliningrad Region)	6	
Lakhta (St. Petersburg)	3	
Lakinsk (Vladimir Region)	2	
Langepas (Khanty-Mansi Autonomous Area – Yugra)	14	✓
Lapshinka (Leninsky distr., Moscow Region)	1	
Laptevo (Leninskiy distr., Moscow Region)	1	
Larevo (Leninskiy distr., Moscow Region)	1	
Lebedyan (Lipetsk Region)	2	✓
Lebyazhe (Ulyanovsk Region)	9	✓
Leninogorsk (Republic of Tatarstan)	4	
Leninsk-Kuznetskiy (Kemerovo Region)	16	✓
Leninskoe (Novosibirsk Region)	15	
Lensk (Republic of Sakha (Yakutia))	19	✓
Lermontov (Stavropol Territory)	11	
Lesosibirsk (Krasnoyarsk Territory)	16	✓
Letovo (Leninsky distr., Moscow Region)	1	
Levashovo (St. Petersburg)	3	
Lgov (Kursk Region)	2	✓
Likino-Dulevo (Moscow Region)	1	✓
Likova (Leninskiy distr., Moscow Region)	1	

Country/Territory	Tariff Zone	Remote Area
Lipetsk (Lipetsk Region)	2	
Lipki (Ulyanovsk Region)	9	
Lipki (Orel Region)	2	
Lisiy Nos (St. Petersburg)	3	
Liski (Voronezh Region)	2	✓
Livadiya (Primorye Territory)	18	
Lobnya (Moscow Region)	1	
Lomonosov (St. Petersburg)	3	
Lopatino (Moscow)	1	✓
Losino-Petrovskiy (Moscow Region)	1	
Luga (Leningrad Region)	5	
Lugovoy (Balashikhinsky distr., Moscow Region)	1	
Lugovoy (Dmitrovsky distr., Moscow Region)	1	✓
Lukhovitsy (Moscow Region)	1	
Lukino (Leninskiy distr., Moscow Region)	1	
Lukino (Naro-Fominsky distr., Moscow Region)	1	✓
Luza (Kirov Region)	4	
Luzhki (Moscow)	1	✓
Luzhki (Ramenskiy distr., Moscow Region)	1	
Lyskovo (Nizhniy Novgorod Region)	4	✓
Lysva (Perm Territory)	13	✓
Lytkarino (Moscow Region)	1	
Lyubertsy (Moscow Region)	1	
Lyudinovo (Kaluga Region)	2	✓
Magadan (Magadan Region)	19	
Magas (Republic of Ingushetia)	11	✓
Magnitogorsk (Chelyabinsk Region)	14	
Makarovo (Noginsky distr., Moscow Region)	1	
Makhachkala (Republic of Dagestan)	11	
Maleevka (Naro-Fominsky distr., Moscow Region)	1	✓
Malgobek (Republic of Ingushetia)	11	✓
Malino (Zelenograd, Moscow)	1	
Maloarkhangelsk (Orel Region)	2	✓
Maloyaroslavets (Kaluga Region)	2	
Malygino (Podolskiy distr., Moscow Region)	1	✓
Mamadysh (Republic of Tatarstan)	4	✓
Mamonovo (Kaliningrad Region)	6	✓
Mamonovo (Leninskiy distr., Moscow Region)	1	
Mamyri (Moscow Region)	1	
Marfino (Naro-Fominsky distr., Moscow Region)	1	
Marks (Saratov Region)	9	✓
Martyush (Sverdlovsk Region)	13	✓
Marushkino (Naro-Fominsky distr., Moscow Region)	1	
Maryino (Noginsky distr., Moscow Region)	1	
Maykop (Republic of Adygeya)	8	
Mayskiy (Kabardino-Balkariya Region)	11	✓
Mayskiy (Vologda Region)	2	
Medvedevo (Orel Region)	2	
Medvezhegorsk (Republic of Karelia)	5	✓

- Service is available
- ✓ Additional tariff is applicable for remote area services.

ZONES AND RATES

Calculate the Price of Your Shipment

Optional Services

Surcharges

Customs Services

Service Capability and Rating Zones

Export Services

RATE ZONES FOR DOMESTIC SERVICES*

Country/Territory	Tariff Zone	Remote Area
Medyn (Kaluga Region)	2	✓
Megeion (Khanty-Mansi Autonomous Area – Yugra)	14	
Meleuz (Republic of Bashkortostan)	12	✓
Melioratorov (Vologda Region)	2	
Mendeleevsk (Republic of Tatarstan)	4	
Meshchovsk (Kaluga Region)	2	✓
Meshkovo (Leninskiy distr., Moscow Region)	1	
Metallostroy (St. Petersburg)	3	
Mezhdurechensk (Kemerovo Region)	16	✓
Miass (Chelyabinsk Region)	13	✓
Michurinsk (Tambov Region)	2	✓
Mikhaylovka (Orel Region)	2	
Mikhaylovsk (Stavropol Territory)	11	
Millerovo (Rostov-on-Don Region)	8	✓
Miloradovo (Leninskiy distr., Moscow Region)	1	
Milyukovo (Naro-Fominsky distr., Moscow Region)	1	
Mineralnye Vody (Stavropol Territory)	11	
Minusinsk (Krasnoyarsk Territory)	16	
Minvneshtorga (Leninskiy distr., Moscow Region)	1	
Mirnyy (Republic of Sakha (Yakutia))	19	✓
Mirnyy (Tikhoretsk distr., Krasnodar Territory)	8	✓
Mirnyy (Ramensky distr., Moscow Region)	1	✓
Mirnyy (Tver Region)	2	✓
Mitino (Moscow)	1	
Molodtsy (Podolsky distr., Moscow Region)	1	
Monchegorsk (Murmansk Region)	10	✓
Mosalsk (Kaluga Region)	2	✓
Moscow	1	
Moskovskiy (Moscow Region)	1	
Mosrentgen (Moscow Region)	1	
Mostovskoe (Podolsky distr., Moscow Region)	1	
Mozhaysk (Moscow Region)	1	✓
Mozhga (Udmurtian Republic)	4	✓
Mtsensk (Orel Region)	2	✓
Muravlenko (Yamal-Nenets Autonomous Area)	14	✓
Murmansk (Murmansk Region)	10	
Murmashi (Murmansk Region)	10	
Murom (Vladimir Region)	4	✓
Murygino (Smolensk Region)	2	✓
Myski (Kemerovo Region)	16	✓
Mytischí (Moscow Region)	1	
Naberezhnye Chelny (Republic of Tatarstan)	4	
Nadym (Yamal-Nenets Autonomous Area)	14	✓
Nagorniy (Yaroslavl Region)	2	
Nakhodka (Primorye Territory)	18	
Nalchik (Kabardino-Balkarian Republic)	11	✓
Naro-Fominsk (Moscow Region)	1	
Naryshkino (Orel Region)	2	
Nastasyino (Naro-Fominsky distr., Moscow Region)	1	

Country/Territory	Tariff Zone	Remote Area
Navashino (Nizhny Novgorod Region)	4	✓
Nazarovo (Krasnoyarsk Territory)	16	✓
Nazaryevo (Moscow)	1	
Nazran (Republic of Ingushetia)	11	✓
Neftegorsk (Samara Region)	7	✓
Neftekamsk (Republic of Bashkortostan)	12	✓
Neftekumsk (Stavropol Territory)	11	✓
Nefteyugansk (Khanty-Mansi Autonomous Area – Yugra)	14	✓
Nekrasovka (Moscow)	1	
Neman (Kaliningrad Region)	6	✓
Nerekhta (Kostroma Region)	2	✓
Neryungri (Republic of Sakha (Yakutia))	19	✓
Nesterov (Kaliningrad Region)	6	✓
Nevyansk (Sverdlovsk Region)	13	✓
Nikolaevka (Voronezh Region)	2	✓
Nikolo-Khovanskoe (Leninsky distr., Moscow Region)	1	
Nikolskoe (Voronezh Region)	2	✓
Nikolskoe (Gatchina distr., Leningrad Region)	3	
Nikolskoe (Tosno distr., Leningrad Region)	3	
Nikolyskoe (Leninskiy distr., Moscow Region)	1	
Nikolyskoe (Podolsky distr., Moscow Region)	1	
Nikonovo (Podolsky distr., Moscow Region)	1	
Nikulskoe (Podolsky distr., Moscow Region)	1	
Nizhnee Valuevo (Leninskiy distr., Moscow Region)	1	
Nizhnekamsk (Republic of Tatarstan)	4	
Nizhneartovsk (Khanty-Mansi Autonomous Area – Yugra)	14	
Nizhny Novgorod (Nizhny Novgorod Region)	4	
Nizhny Tagil (Sverdlovsk Region)	13	
Nizhnyaya Salda (Sverdlovsk Region)	13	
Nizhnyaya Tura (Sverdlovsk Region)	13	✓
Noginsk (Moscow Region)	1	
Nogliki (Sakhalin Region)	18	✓
Norilsk (Krasnoyarsk Territory)	16	✓
Novaya Ladoga (Leningrad Region)	3	✓
Novaya Lyalya (Sverdlovsk Region)	13	✓
Novinki (Leninskiy distr., Moscow Region)	1	
Novoaltaysk (Altai Territory)	15	
Novobutakovo (Moscow)	1	
Novocheboksarsk (Chuvash Republic)	4	
Novocherkassk (Rostov-on-Don Region)	8	
Novodvinsk (Arkhangelsk Region)	10	
Novokosino (Moscow)	1	
Novokubansk (Krasnodar Territory)	8	
Novokuybyshevsk (Samara Region)	7	
Novokuznetsk (Kemerovo Region)	16	
Novomalino (Moscow)	1	
Novomikhaylovskiy (Krasnodar Territory)	8	✓
Novomoskovsk (Tula Region)	2	✓
Novoperedelkino (Moscow)	1	

- Service is available
- ✓ Additional tariff is applicable for remote area services.

ZONES AND RATES

Calculate the Price of Your Shipment

Optional Services

Surcharges

Customs Services

Service Capability and Rating Zones

Export Services

RATE ZONES FOR DOMESTIC SERVICES*

Country/Territory	Tariff Zone	Remote Area
Novorossiysk (Krasnodar Territory)	8	
Novoselki (Podolsky distr., Moscow Region)	1	✓
Novoshakhtinsk (Rostov-on-Don Region)	8	✓
Novosibirsk (Novosibirsk Region)	15	
Novosil (Orel Region)	2	✓
Novotroitsk (Orenburg Region)	12	
Novoulyanovsk (Ulyanovsk Region)	9	
Novouralsk (Sverdlovsk Region)	13	✓
Novovoronezh (Voronezh Region)	2	✓
Novozavidovskiy (Tver Region)	2	✓
Novozybkov (Bryansk Region)	2	✓
Noviy (Egoryevsk distr., Moscow Region)	1	
Noviy (Krasnogorsk distr., Moscow Region)	1	
Noviy Urengoy (Yamal-Nenets Autonomous Area)	14	
Novyy (Krasnodar Reg)	8	
Novyy Gorodok (Odintsovsky distr., Moscow Region)	1	✓
Novyy Gorodok (Shchelkovsky distr., Moscow Region)	1	
Novyy Oskol (Belgorod Region)	2	✓
Noyabrsk (Yamal-Nenets Autonomous Area)	14	
Nyagan (Khanty-Mansi Autonomous Area – Yugra)	14	✓
Ob (Novosibirsk Region)	15	
Obninsk (Kaluga Region)	2	
Odintsovo (Odintsovo distr., Moscow Region)	1	
Odintsovo (Domodedovsky distr., Moscow Region)	1	
Oktyabrsk (Samara Region)	7	
Oktyabrskiy (Republic of Bashkortostan)	12	✓
Oktyabrskiy (Istrinsky distr., Moscow Region)	1	✓
Oktyabrskiy (Odintsovo distr., Moscow Region)	1	✓
Oktyabrskiy (Orel Region)	2	
Oktyabrskoe (Ulyanovsk Region)	9	✓
Oktyabrskiy (Lyubertsky distr., Moscow Region)	1	
Oktyabrskiy (Krasnodar Territory)	8	
Olenegorsk (Murmansk Region)	10	✓
Olgino (St. Petersburg)	3	
Olonets (Republic of Karelia)	5	✓
Omsk (Omsk Region)	15	
Onega (Arkhangelsk Region)	10	✓
Onokhoy (Republic of Buryatia)	17	
Orekhovo-Zuevo (Moscow Region)	1	
Orel (Orel Region)	2	
Orenburg (Orenburg Region)	12	
Orlovskiy (Rostov-on-Don Region)	8	✓
Orsk (Orenburg Region)	12	
Osinki (Solnechnogorsky distr., Moscow Region)	1	✓
Osinniki (Kemerovo Region)	16	
Ostafyevoye (Podolsky distr., Moscow Region)	1	
Ostrogzhsk (Voronezh Region)	2	✓
Ostrov (Leninsky distr., Moscow Region)	1	
Otradnoe (Bryansk Region)	2	

Country/Territory	Tariff Zone	Remote Area
Otradnoe (Kirovsk distr., Leningrad Region)	3	
Otradnoe (Krasnogorsky distr., Moscow Region)	1	
Otradnoe (Voronezh Region)	2	
Otradniy (Samara Region)	7	
Ozernyy (Naro-Fominsky distr., Moscow Region)	1	
Ozersk (Chelyabinsk Region)	13	
Ozersk (Kaliningrad Region)	6	✓
Oznobishino (Podolsky distr., Moscow Region)	1	
Pargolovo (St. Petersburg)	3	
Partzansk (Primorsky Region)	18	✓
Pavlovo (Nizhniy Novgorod Region)	4	
Pavlovsk (St. Petersburg)	3	
Pavlovsk (Voronezh Region)	2	✓
Pavlovskiy (Temryuk distr., Krasnodar Territory)	8	✓
Pavlovskiy Posad (Moscow Region)	1	✓
Pechora (Komi Republic)	10	✓
Pechory (Pskov Region)	5	✓
Penino (Leninsky distr., Moscow Region)	1	
Penza (Penza Region)	4	
Pereslavl-Zalesskiy (Yaroslavl Region)	2	✓
Peresvet (Moscow Region)	1	✓
Perm (Perm Territory)	13	
Pervomayka (Ramensky distr., Moscow Region)	1	
Pervomayskiy (Istrinsky distr., Moscow Region)	1	✓
Pervomayskiy (Mineralovodskiy distr., Stavropol Territory)	11	
Pervomayskiy (Tula Region)	2	
Pervomayskoe (Kaliningrad Region)	6	
Pervomayskoe (Naro-Fominsky distr., Moscow Region)	1	
Pervouralsk (Sverdlovsk Region)	13	
Pesochniy (St. Petersburg)	3	
Pesye (Podolsky distr., Moscow Region)	1	
Peterehof (St. Petersburg)	3	
Petropavlovsk-Kamchatskiy (Kamchatka Territory)	19	
Petroslavyanka (St. Petersburg)	3	
Petrozavodsk (Republic of Karelia)	5	
Petushki (Vladimir Region)	2	✓
Pionerskiy (Istrinsky distr., Moscow Region)	1	✓
Pionerskiy (Vologda Region)	2	✓
Piskovo (Leninsky distr., Moscow Region)	1	
Pitkyaranta (Republic of Karelia)	5	✓
Pochinki (Podolsky distr., Moscow Region)	1	
Pochinok (Vologda Region)	2	
Podolsk (Moscow Region)	1	
Podosinki (Podolskiy distr., Moscow Region)	1	✓
Pogor (Bryansk Region)	2	✓
Pokhvistnevo (Samara Region)	7	✓
Pokrov (Klin distr., Moscow Region)	1	✓
Pokrov (Moscow Region)	1	
Pokrovskoe (Odintsovsky distr., Moscow Region)	1	✓

- Service is available
- ✓ Additional tariff is applicable for remote area services.

ZONES AND RATES

Calculate the Price of Your Shipment

Optional Services

Surcharges

Customs Services

Service Capability and Rating Zones

Export Services

RATE ZONES FOR DOMESTIC SERVICES*

Country/Territory	Tariff Zone	Remote Area
Pokrovskoe (Vologda Region)	2	✓
Polessk (Kaliningrad Region)	6	✓
Polevskoy (Sverdlovsk Region)	13	
Polyany (Podolskiy distr., Moscow Region)	1	✓
Pontonniy (St. Petersburg)	3	
Popovka (Moscow)	1	
Postnikovo (Naro-Fominsky distr., Moscow Region)	1	
Povorino (Voronezh Region)	2	✓
Pravdinsk (Kaliningrad Region)	6	✓
Pribrezhniy (Kaliningrad Region)	6	
Primorsk (Leningrad Region)	5	✓
Primorsk (Kaliningrad Region)	6	✓
Primorskiy (Temryuk distr., Krasnodar Territory)	8	
Privolzhsk (Ivanovo Region)	2	✓
Progress (Temryuk distr., Krasnodar Territory)	8	
Prokhladny (Kabardino-Balkarian Republic)	11	✓
Prokhorovka (Belgorod Region)	2	✓
Prokopyevsk (Kemerovo Region)	16	
Prokshino (Leninsky distr., Moscow Region)	1	
Proletarsk (Rostov-on-Don Region)	8	✓
Protvino (Moscow Region)	1	✓
Pskov (Pskov Region)	5	
Ptichnoe (Naro-Fominsky distr., Moscow Region)	1	
Puchkovo (Naro-Fominsky distr., Moscow Region)	1	
Pugachev (Saratov Region)	9	✓
Pushchino (Serpukhovskoy distr., Moscow Region)	1	
Pushkin (St. Petersburg)	3	
Pushkino (Moscow Region)	1	
Pushkino (Ramenskiy distr., Moscow Region)	1	✓
Pyatigorsk (Stavropol Territory)	11	
Pyatovskoe (Naro-Fominsky distr., Moscow Region)	1	
Pykhchevo (Leninskiy distr., Moscow Region)	1	
Pykhtino (Leninskiy distr., Moscow Region)	1	
Pyt-Yakh (Khanty-Mansi Autonomous Area – Yugra)	14	✓
Radchenko (Tver Region)	2	
Radiotsentr (Leninskiy distr., Moscow Region)	1	
Raduzhniy (Khanty-Mansi Autonomous Area – Yugra)	14	✓
Raduzhniy (Vladimir Region)	2	
Raevo (Podolskiy distr., Moscow Region)	1	✓
Ramenskoe (Moscow Region)	1	
Rasskazovka (Leninskiy distr., Moscow Region)	1	
Rasskazovo (Tambov Region)	2	
Rastoropovo (Leninskiy distr., Moscow Region)	1	
Razdolnoe (Sakhalin Region)	18	
Razdolnoe (Novosibirsk Region)	15	
Razliv (St. Petersburg)	3	
Redkino (Tver Region)	2	
Repino (St. Petersburg)	3	
Reutov (Moscow Region)	1	

Country/Territory	Tariff Zone	Remote Area
Revda (Sverdlovsk Region)	13	
Rezh (Sverdlovsk Region)	13	✓
Rodniki (Ivanovo Region)	2	✓
Rodniki (Kaliningrad Region)	6	
Rogozinino (Naro-Fominsky distr., Moscow Region)	1	
Roshchinskiy (Omsk Region)	15	✓
Roslavl (Smolensk Region)	2	✓
Rostov (Yaroslavl Region)	2	✓
Rostov-on-Don (Rostov-on-Don Region)	8	
Rozhdestvenno (Moscow)	1	✓
Rozhnovo (Moscow)	1	
Rublevo (Moscow)	1	
Rubtsovsk (Altai Territory)	15	✓
Rumyantsevo (Moscow Region)	1	
Rusino (Podolskiy distr., Moscow Region)	1	
Ruzaevka (Republic of Mordovia)	4	
Ryazan (Ryazan Region)	2	
Ryazhsk (Ryazan Region)	2	✓
Rybatskoe (St. Petersburg)	3	
Rybino (Podolskiy distr., Moscow Region)	1	
Rybinsk (Yaroslavl Region)	2	✓
Rybnoe (Ryazan Region)	2	
Rybnoe (Dmitrovskiy distr., Moscow Region)	1	✓
Rzhev (Tver Region)	2	✓
Safonovo (Smolensk Region)	2	✓
Salaryevo (Moscow Region)	1	
Salavat (Republic of Bashkortostan)	12	
Salekhard (Yamal-Nenets Autonomous Area)	14	✓
Salsk (Rostov-on-Don Region)	8	✓
Samara (Samara Region)	7	
Saperniy (St. Petersburg)	3	
Saransk (Republic of Mordovia)	4	
Sarapul (Udmurtian Republic)	4	✓
Saratov (Saratov Region)	9	
Sarov (Nizhniy Novgorod Region)	4	✓
Sasovo (Ryazan Region)	2	✓
Sayanogorsk (Republic of Khakassia)	16	✓
Sebez (Pskov Region)	5	✓
Segezha (Republic of Karelia)	5	✓
Selenginsk (Republic of Buryatia)	17	✓
Seltso (Bryansk Region)	2	✓
Semenov (Nizhny Novgorod Region)	4	✓
Semikarakorsk (Rostov-on-Don Region)	8	✓
Semiluki (Voronezh Region)	2	
Sengiley (Ulyanovsk Region)	9	✓
Sergiev Posad (Moscow Region)	1	
Serov (Sverdlovsk Region)	13	✓
Serpukhov (Moscow Region)	1	
Sertolovo (Leningrad Region)	3	

- Service is available
- ✓ Additional tariff is applicable for remote area services.

ZONES AND RATES

Calculate the Price of
Your Shipment

Optional
Services

Surcharges

Customs
Services

Service Capability and
Rating Zones

Export
Services

RATE ZONES FOR DOMESTIC SERVICES*

Country/Territory	Tariff Zone	Remote Area
Sestroretsk (St. Petersburg)	3	
Severny (Belgorod Region)	2	
Severniy (Moscow)	1	
Severodvinsk (Arkhangelsk Region)	10	
Severomorsk (Murmansk Region)	10	✓
Severouralsk (Sverdlovsk Region)	13	✓
Shablykino (Orel Region)	2	✓
Shadrinsk (Kurgan Region)	14	✓
Shakhovo (Podolsky distr., Moscow Region)	1	✓
Shakhty (Rostov-on-Don Region)	8	
Sharapovo (Naro-Fominsk distr., Moscow Region)	1	
Sharya (Kostroma Region)	2	✓
Sharypovo (Krasnoyarsk Territory)	16	✓
Shatura (Moscow Region)	1	✓
Shchupovo (Podolsky distr., Moscow Region)	1	
Schekino (Tula Region)	2	
Schelkovo (Moscow Region)	1	
Scherbinka (Moscow Region)	1	
Shchuche (Orel Region)	2	
Shebekino (Belgorod Region)	2	
Shelbutovo (Leninskiy distr., Moscow Region)	1	
Shelekhov (Irkutsk Region)	17	
Shikhany (Saratov Region)	9	✓
Shiryaevo (Moscow)	1	
Shlisselburg (Leningrad Region)	3	✓
Shudayag (Komi Republic)	10	
Shumerlya (Chuvash Republic)	4	✓
Shushary (St. Petersburg)	3	
Shuya (Ivanovo Region)	2	
Sibay (Republic of Bashkortostan)	14	✓
Skopin (Ryazan Region)	2	✓
Slantsy (Leningrad Region)	5	✓
Slavnyy (Tver Region)	2	✓
Slavsk (Kaliningrad Region)	6	✓
Slavyansk-na-Kubani (Krasnodar Territory)	8	
Slobodskoy (Kirov Region)	4	✓
Slyudyanka (Irkutsk Region)	17	✓
Smolensk (Smolensk Region)	2	
Smyshlyaevka (Ulyanovsk Region)	9	✓
Smyshlyaevka (Samara Region)	7	
Snezhinsk (Chelyabinsk Region)	13	✓
Sobinka (Vladimir Region)	2	
Sochi (Krasnodar Territory)	11	
Sofyino (Podolsky distr., Moscow Region)	1	✓
Sokol (Magadan Region)	19	✓
Sokol (Vologda Region)	2	
Sokol (Sakhalin Region)	18	
Sokolovo (Naro-Fominsky distr., Moscow Region)	1	
Solikamsk (Perm Territory)	13	

Country/Territory	Tariff Zone	Remote Area
Sol-Ilets (Orenburg Region)	12	✓
Solnechniy (Voronezh Region)	2	
Solnechnoe (St. Petersburg)	3	
Solnechnogorsk (Moscow Region)	1	✓
Solnechnyy (Khanty-Mansi Autonomous Area – Yugra)	14	
Solntsevo (Moscow)	1	
Sorochinsk (Orenburg Region)	12	✓
Sortavala (Republic of Karelia)	5	✓
Sosenki (Moscow Region)	1	
Sosnogorsk (Komi Republic)	10	
Sosnovka (Vologda Region)	2	
Sosnoviy Bor (Leningrad Region)	5	
Sosnovy Bor (Republic of Buryatia)	17	
Sosnovyy Bor (Leninskiy distr., Moscow Region)	1	
Sovetsk (Kaliningrad Region)	6	✓
Sovetskaya Gavan (Khabarovsk Territory)	18	
Sovetskiy (Leningrad Region)	5	
Sovetskiy (Khanty-Mansi Autonomous Area – Yugra)	14	✓
Sredneuralsk (Sverdlovsk Region)	13	
St. Petersburg	3	
Stanislavl (Leninskiy distr., Moscow Region)	1	
Staraya Kupavna (Moscow Region)	1	
Staritsa (Tver Region)	2	✓
Starodub (Bryansk Region)	2	✓
Staroselye (Leninskiy distr., Moscow Region)	1	
Starosyrovo (Podolsky distr., Moscow Region)	1	
Stariy Oskol (Belgorod Region)	2	✓
Stavropol (Stavropol Territory)	11	
Stepnoy (Krasnodar Territory)	8	
Sterlitamak (Republic of Bashkortostan)	12	
Stolbovo (Leninsky distr., Moscow Region)	1	
Stradan (Podolskiy distr., Moscow Region)	1	✓
Strezhevoy (Tomsk Region)	14	✓
Stroitel (Arkhangelsk Region)	10	
Stroitel (Tambov Region)	2	
Stroykeramika (Samara Region)	7	
Studentsy (Podolsky distr., Moscow Region)	1	
Stupino (Moscow Region)	1	
Sudogda (Vladimir Region)	2	
Sudzha (Kursk Region)	2	✓
Sukhinichi (Kaluga Region)	2	✓
Sukhodol (Samara Region)	7	✓
Sukhoy Log (Sverdlovsk Region)	13	✓
Surazh (Bryansk Region)	2	✓
Surgut (Khanty-Mansi Autonomous Area – Yugra)	14	
Surgut (Samara Reg)	7	✓
Suvorov (Tula Region)	2	✓
Suzdal (Vladimir Region)	2	
Svetlogorsk (Kaliningrad Region)	6	✓

- Service is available
- ✓ Additional tariff is applicable for remote area services.

ZONES AND RATES

Calculate the Price of Your Shipment

Optional Services

Surcharges

Customs Services

Service Capability and Rating Zones

Export Services

RATE ZONES FOR DOMESTIC SERVICES*

Country/Territory	Tariff Zone	Remote Area
Svetlyy (Irkutsk Reg)	17	
Svetlyy (Noginsky distr., Moscow Region)	1	
Svetogorsk (Leningrad Region)	5	✓
Syktuykar (Komi Republic)	10	
Sysert (Sverdlovsk Region)	13	✓
Syzran (Samara Region)	7	
Taganrog (Rostov-on-Don Region)	8	
Talitsa (Sverdlovsk Region)	13	✓
Tambov (Tambov Region)	2	
Tarasovo (Podolsky distr., Moscow Region)	1	
Tarkhovka (St. Petersburg)	3	
Tarko-Sale (Yamal-Nenets Autonomous Area)	14	✓
Tayshet (Krasnoyarsk Territory)	17	✓
Temryuk (Krasnodar Territory)	8	
Terek (Kabardino-Balkarian Republic)	11	✓
Tikhoretsk (Krasnodar Territory)	8	
Tikhvin (Leningrad Region)	3	✓
Timashevsk (Krasnodar Territory)	8	
Tlyustenkhabl (Krasnodar Territory)	8	
Tobolsk (Tyumen Region)	13	✓
Togliatti (Samara Region)	7	
Tolmachevo (Novosibirsk Region)	15	
Tomsk (Tomsk Region)	15	
Torzhok (Tver Region)	2	✓
Tosno (Leningrad Region)	3	
Troitsk (Moscow Region)	1	
Troitsk (Chelyabinsk Region)	13	✓
Troitskoe (Podolsky distr., Moscow Region)	1	
Trubchevsk (Bryansk Region)	2	✓
Tsemolina (Krasnodar Territory)	8	
Tuapse (Krasnodar Territory)	8	
Tula (Tula Region)	2	
Tupikovo (Leninsky distr., Moscow Region)	1	
Tutaev (Yaroslavl Region)	2	
Tuymazy (Republic of Bashkortostan)	12	✓
Tver (Tver Region)	2	
Tyarlevo (St. Petersburg)	3	
Tynda (Amur Region)	19	✓
Tyumen (Tyumen Region)	13	
Udomlya (Tver Region)	2	✓
Ufa (Republic of Bashkortostan)	12	
Ugleuralskiy (Perm Territory)	13	✓
Uglich (Yaroslavl Region)	2	✓
Ukhta (Komi Republic)	10	
Ulan-Ude (Republic of Buryatia)	17	
Ulyanovsk (Ulyanovsk Region)	9	
Ulyanovskogo Lesoparka (Leninsky distr., Moscow Region)	1	
Uray (Khanty-Mansi Autonomous Area – Yugra)	14	✓
Ushkovo (St. Petersburg)	3	

Country/Territory	Tariff Zone	Remote Area
Usinsk (Komi Republic)	10	
Usman (Lipetsk Region)	2	✓
Usolye (Perm Territory)	13	
Usolye-Sibirskoe (Irkutsk Region)	17	✓
Ussuriysk (Primorye Territory)	18	
Ust-Ilimsk (Irkutsk Region)	17	✓
Ust-Izhora (St. Petersburg)	3	
Ust-Kinelskiy (Samara Region)	7	
Ust-Kut (Irkutsk Region)	17	✓
Ust-Labinsk (Krasnodar Territory)	8	✓
Utkina Zavod (St. Petersburg)	3	
Uvarovo (Domodedovsky distr., Moscow Region)	1	✓
Uzhur (Krasnoyarsk Territory)	16	✓
Uzlovaya (Tula Region)	2	✓
Vakhrushki (Kirov Region)	4	
Valuevo (Leninsky distr., Moscow Region)	1	
Valuyki (Belgorod Region)	2	✓
Vanino (Khabarovsk Territory)	18	
Varvarino (Podolskiy distr., Moscow Region)	1	✓
Vatutinki (Leninsky distr., Moscow Region)	1	
Velikie Luki (Pskov Region)	5	✓
Velikiy Novgorod (Novgorod Region)	5	
Velikiy Ustyug (Vologda Region)	10	✓
Velsk (Vologda Region)	2	✓
Vereshchagino (Perm Territory)	13	✓
Vereya (Ramenskiy distr., Moscow Region)	1	
Verkhnyaya Dubrovinka (Smolensk Region)	2	
Verkhnee Valuevo (Leninsky distr., Moscow Region)	1	
Verkhniy Tagil (Sverdlovsk Region)	13	✓
Verkhnyaya Pyshma (Sverdlovsk Region)	13	
Verkhnyaya Salda (Sverdlovsk Region)	13	
Verkhovye (Moscow)	1	
Veseloe (Krasnodar Territory)	11	✓
Vichuga (Ivanovo Region)	2	✓
Vidnoe (Moscow Region)	1	
Vikhorevka (Irkutsk Region)	17	✓
Vishenki (Smolensk Region)	2	
Vladikavkaz (Republic of North Ossetia – Alania)	11	
Vladimir (Vladimir Region)	2	
Vladivostok (Primorye Territory)	18	
Vlasovo (Naro-Fominsky distr., Moscow Region)	1	
Vlasyevo (Leninsky distr., Moscow Region)	1	
Vnukovo (Moscow Region)	1	
Volgodonsk (Rostov-on-Don Region)	8	
Volgograd (Volgograd Region)	9	
Volgorechensk (Kostroma Region)	2	
Volkhov (Volkhovskiy distr., Leningrad Region)	3	✓
Vologda (Vologda Region)	2	
Volsk (Saratov Region)	9	✓

- Service is available
- ✓ Additional tariff is applicable for remote area services.

ZONES AND RATES

Calculate the Price of Your Shipment

Optional Services

Surcharges

Customs Services

Service Capability and Rating Zones

Export Services

RATE ZONES FOR DOMESTIC SERVICES*

Country/Territory	Tariff Zone	Remote Area
Volzhsk (Region Mari El)	4	✓
Volzhsk (Volgograd Region)	9	
Vorkuta (Komi Republic)	10	✓
Voronezh (Voronezh Region)	2	
Vorsino (Podolsky distr., Moscow Region)	1	
Vorsma (Nizhny Novgorod Region)	4	
Voskhod (Istrinsky distr., Moscow Region)	1	✓
Voskhod (Novosibirsk Region)	15	
Voskresensk (Moscow Region)	1	
Vostochniy (Moscow)	1	
Vostochniy (Trans-Baikal Territory)	17	
Vostochniy (Tihoretskiy distr., Krasnodar Territory)	8	
Vostryakovo (Moscow Region)	1	
Votkinsk (Udmurtian Republic)	4	
Vsevolozhsk (Leningrad Region)	3	
Vyazma (Smolensk Region)	2	✓
Vyazniki (Stavropol Territory)	11	
Vyborg (Leningrad Region)	5	
Vykhino-Zhulebino (Moscow Region)	1	
Vyksa (Nizhny Novgorod Region)	4	✓
Vyshniy Volochek (Tver Region)	2	✓
Vysokovsk (Moscow Region)	1	✓
Yablonovskiy (Republic of Adygeya)	8	
Yakhroma (Moscow Region)	1	✓
Yakovlevo (Leninskiy distr., Moscow Region)	1	
Yakovlevo (Podolsky distr., Moscow Region)	1	
Yakutsk (Republic of Sakha (Yakutia))	19	
Yalutorovsk (Tyumen Region)	13	✓
Yamontovo (Leninskiy distr., Moscow Region)	1	
Yanaul (Republic of Bashkortostan)	12	✓
Yantarniy (Kaliningrad Region)	6	✓
Yantarniy (Aksay distr., Rostov-on-Don Region)	8	
Yantarnyy (Balashikhinsky distr., Moscow Region)	1	
Yarega (Komi Republic)	10	✓
Yaroslavl (Yaroslavl Region)	2	
Yartsevo (Moscow)	1	✓
Yasnogorsk (Tula Region)	2	✓
Yazovo (Leninskiy distr., Moscow Region)	1	
Yoshkar-Ola (Republic of Mari El)	4	
Yubileyniy (Moscow Region)	1	
Yubileyniy (Krasnodar Territory)	8	✓
Yugorsk (Khanty-Mansi Autonomous Area – Yugra)	14	✓
Yukhnov (Kaluga Region)	2	✓
Yurev-Polskiy (Vladimir Region)	2	✓
Yurevets (Vladimir Region)	2	
Yuryevo (Naro-Fominsky distr., Moscow Region)	1	✓
Yuzhno-Sakhalinsk (Sakhalin Region)	18	
Yuzhnouralsk (Chelyabinsk Region)	13	✓
Zabaykalskiy (Trans-Baikal Territory)	17	✓

Country/Territory	Tariff Zone	Remote Area
Zabolotye (Moscow)	1	✓
Zadonsk (Lipetsk Region)	2	✓
Zainsk (Republic of Tatarstan)	4	
Zaozerniy (Kurgan Region)	14	
Zareche (Orel Region)	2	
Zarechye (Moscow)	1	
Zarechniy (Penza Region)	4	
Zarechnyy (Sverdlovsk Region)	13	✓
Zarechye (Volkhovskiy distr., Leningrad Region)	3	✓
Zarinsk (Altai Territory)	15	✓
Zavodoukovsk (Tyumen Region)	13	✓
Zavolzhye (Nizhny Novgorod Region)	4	
Zelenodolsk (Republic of Tatarstan)	4	✓
Zelenogorsk (Krasnoyarsk Territory)	16	✓
Zelenogorsk (St. Petersburg)	3	
Zelenograd (Moscow)	1	
Zelenogradsk (Kaliningrad Region)	6	✓
Zeleniy (Tikhoretsk distr., Krasnodar Territory)	8	✓
Zelenyy Bor (Smolensk Region)	2	
Zernograd (Rostov-on-Don Region)	8	✓
Zheleznodorozhniy (Kaliningrad Region)	6	✓
Zheleznogorsk (Krasnoyarsk Territory)	16	✓
Zheleznogorsk (Kursk Region)	2	✓
Zheleznovodsk (Stavropol Territory)	11	
Zhigulevsk (Samara Region)	7	
Zhukovka (Moscow Region)	1	
Zhukovka (Bryansk Region)	2	✓
Zhukovka (Naro-Fominsky distr., Moscow Region)	1	
Zhukovka (Orel Region)	2	
Zukovskiy (Moscow Region)	1	
Zhulebino (Moscow Region)	1	
Zimenki (Leninsky distr., Moscow Region)	1	
Zlatoust (Chelyabinsk Region)	13	✓
Znamenka (Orel Region)	2	
Znamensk (Kaliningrad Region)	6	✓
Znamya Oktyabrya (Podolsky distr., Moscow Region)	1	
Zvenigorod (Moscow Region)	1	✓
Zverevo (Rostov-on-Don Region)	8	✓
Zverevo (Moscow)	1	✓

- Service is available
- ✓ Additional tariff is applicable for remote area services.



Country Office:

127083 Moscow

8 Marta St., 14

Telephone: +7 (495) 956 1000, 8 (800) 7000-345

A full list of DHL Express offices in Russia
is available at express.dhl.ru

© DHL

© DHL Express

DHL® and DHL Express® are registered trademarks
of Deutsche Post AG / DHL International GmbH.

Valid from January 1st, 2023.

Subject to change without notice.

Approved by the Orders №1-06/01/11/22 and №1-05/01/11/22