



SERVICE & RATE GUIDE 2025

RUSSIA

GET STARTED

[Connecting Your World](#)

[Dear Customer](#)

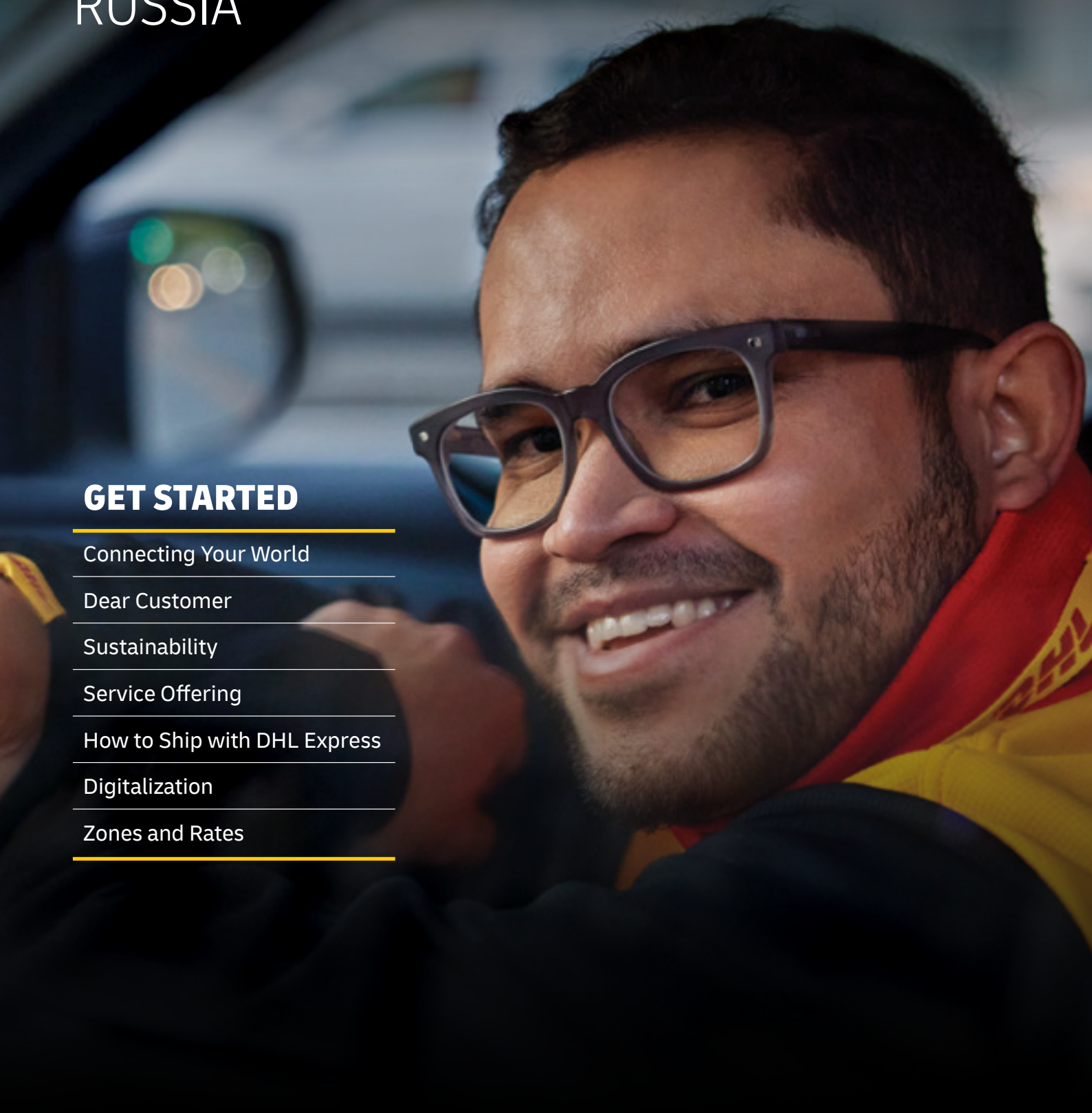
[Sustainability](#)

[Service Offering](#)

[How to Ship with DHL Express](#)

[Digitalization](#)

[Zones and Rates](#)



CONNECTING YOUR WORLD



220+
countries and
territories served



500+
airports served
worldwide

295+
aircraft

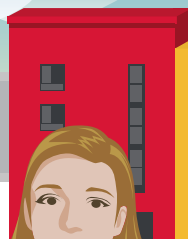
2,300+
flights per day



115,000
Service Points



116,000
employees



3,800
facilities

34,600
vehicles

**288
million**
Time Definite shipments
per year



451
TAPA* certifications

By the year 2050,
DHL Group aims to
achieve net zero
emissions logistics

GOGREEN

Figures are global and are approximate
as of the end of 2023

*Transported Asset Protection Association

DEAR CUSTOMER

Welcome to the DHL Express Service and Rate Guide for 2025. If you are reading this, it means you have a personal or business need to move something, from somewhere, to somewhere and you want it done quickly, securely and reliably.

DHL Express is global market leader in Time Definite International (TDI) shipping and courier delivery, and the most international company in the world. We move over 1 million shipments every working day, from point A to point B in 220 countries and territories, as quickly, securely and reliably as possible. Over 3 million customers around the world put their trust in us, and our team of 116,000 Certified International Specialists strive to exceed their expectations on every single shipment.

2024 was another challenging year. The geopolitical situation in the world remains tense and continues to have a significant impact on logistics. Despite this, our company globally continues to invest heavily in the sustainability of our network. Examples of these investments include upgrading our fleet with eight new Boeing 777 freighter aircrafts, as well as significant investments in carbon-neutral facilities and digital security infrastructure.

These investments work for the future of the DHL network and ensure that we continue to improve the quality of service we deliver to our customers.

The strength of our network helps us stay the Logistics Provider of Choice. Delivering on our commitments to the customers and providing services of high quality – have always been and remain our top priorities.

Sustainability and Digitalization continue to be long-term focus areas and are integral to our corporate strategy. This year DHL Express took further steps in the journey to achieving net-zero emissions by 2050 through increasing our Sustainable Aviation Fuel (SAF) utilization and electric vehicles. With our GoGreen Plus service, you can support your own decarbonization goals – your customers are likely already making purchase decisions based on the carbon footprint of your products and services. Give them another reason to say ‘Yes’ and make a choice in your favour.

Use our digital capabilities to enhance your customers’ experience. For example, our On Demand Delivery will give you and your customers greater manoeuvrability at the last mile delivery stage.

We continue supporting Russian exporters. The global e-commerce shows steady growth, and businesses in Russia have new markets for export development. DHL Express remains a trusted partner for exporters, helping them turn local business into global. This guide will give you the information you need to know which DHL Express products, services and solutions meet your logistics needs.

Thank you for trusting us to be your logistics partner!

Sincerely,

Dmitriy Zharkov
Managing Director
DHL Express Russia



SUSTAINABILITY

Connecting Your World

► Sustainability

Service Offering

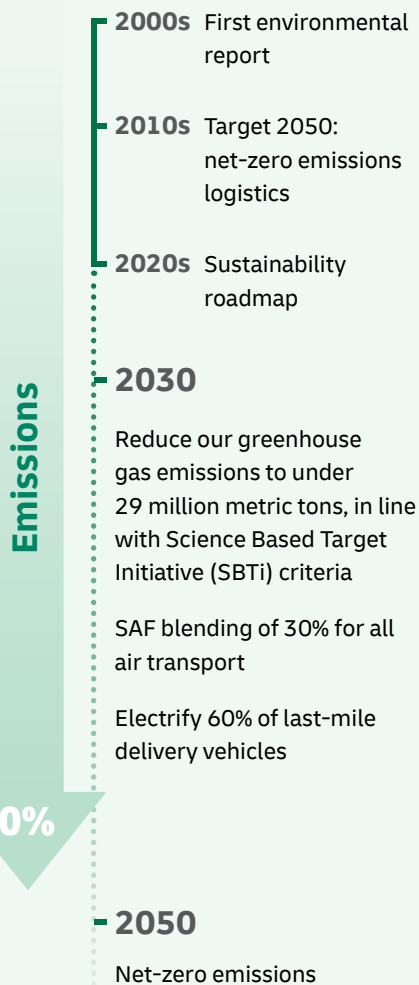
How to Ship with DHL Express

Digitalization

Zones and Rates



OUR SUSTAINABILITY JOURNEY



CLEAN OPERATIONS FOR CLIMATE PROTECTION



Leader in sustainable aviation

DHL Express GoGreen Plus is a dedicated solution to help businesses reduce the carbon emissions associated with their shipments through the use of Sustainable Aviation Fuel (SAF). GoGreen Plus uses SAF to enable customers to reduce the CO₂e emissions associated with their shipments, and is currently supported by three of the industry's largest collaborations with BP, Neste and World Energy.



In contrast to 'offsetting' – where businesses 'neutralize' their emissions through environmental programs – GoGreen Plus is 'insetting'. Insetting's impact is greater because it directly reduces emissions within a company's value chain, resulting in significant reductions in scope 3 emissions. Here is how you can get on board:

- With the **GoGreen Plus Basic model**, a fixed CO₂e reduction (insetting) will be achieved on all your air express shipments.
- In **MyDHL+**, you can opt for GoGreen Plus and choose which shipments to invest in with SAF.
- Alternatively, choose a **Customized Offer** for a bespoke insetting plan.



Green last-mile and line-haul

Electrify **60%** of last-mile delivery vehicles.



Carbon neutral buildings

Design **100%** of all new buildings to be carbon neutral.



Green product portfolio

Our GoGreen Plus service allows customers shipping TDI to inset their CO₂ air emissions by up to **90%**.



GREAT COMPANY TO WORK FOR ALL

- Attract and retain the best talent
- 'Safety First' culture
- Diverse and inclusive workplace



HIGHLY TRUSTED COMPANY

- Compliance as an integral part of daily business
- Effective governance set-up across our organization
- Like-minded and compliant suppliers and partners



SERVICE OFFERING

Connecting Your World
Sustainability
► Service Offering
How to Ship with DHL Express
Digitalization
Zones and Rates

Export Services	Enabling Your Growth	Optional Services	Surcharges	Customs Services
-----------------	----------------------	-------------------	------------	------------------

Our core services are Time Definite International (TDI) and offer you secure door-to-door delivery of goods and documents to and from virtually every country and territory. Whether you need your shipments delivered at the start, middle or end of a business day, our services offer full track-and-trace visibility so you always know where your shipments are.

EXPORT SERVICES

DHL Express Worldwide

Our most popular product, DHL Express Worldwide, offers an end of business day delivery service around the world for pieces up to 70kg and shipments up to 1,000kg.

We deliver reliably and quickly to more global destinations across a single integrated network than any other express delivery company.

DHL Express 12:00

With DHL Express 12:00 you will receive your shipments before 12 noon on the next possible business day. DHL Express 12:00

offers a money-back guarantee* and allows for pieces up to 70kg and shipments up to 300kg.

DHL Express 9:00/10:30

Our premium time-definite service offers a delivery before 9:00/10:30 on lanes that guarantee either a next or second business day delivery. DHL Express 9:00/10:30 is offered to the majority of business centers in Europe, the Middle East, Africa, Asia and the Americas. DHL Express 9:00/10:30 features a money-back guarantee* and is suitable for pieces up to 30kg and shipments up to 300kg.

International Services**

	DHL Express Worldwide	DHL Express 12:00	DHL Express 9:00/10:30
Service description	Express door-to-door international pre 18:00 hrs delivery of document and non-document shipments	Express door-to-door international pre 12:00 hrs delivery of document and non-document shipments on the next possible business day. Priority handling	Express door-to-door international pre 9:00/10:30 hrs delivery of document and non-document shipments on the next possible business day. Priority handling and proactive notification of delivery
Money-back guarantee	No	Yes***	Yes***
Countries and territories covered	More than 220****	Available to Europe, Middle East, Asia, Latin America and USA****	Available to Europe, Middle East, Asia and USA****
Maximum piece weight	70kg	70kg	30kg
Maximum pieces per shipment	—	10	10
Maximum shipment weight	1000kg	300kg	300kg
Maximum piece dimensions	120 x 80 x 80cm	120 x 80 x 80cm	120 x 80 x 80cm
Maximum pallet weight	300 kg	Pallets not accepted	Pallets not accepted
Maximum pallet dimensions (L x W x H)	120 x 120 x 160cm	Pallets not accepted	Pallets not accepted
Additional services and surcharges	Optional services available upon request. Additional surcharges may apply	Premium charge 12:00 to the DHL EXPRESS WORLDWIDE rate	Premium charge 9:00/10:30 to the DHL EXPRESS WORLDWIDE rate

* DHL aims to provide your shipments with the shortest transit time possible. All references contained in this DHL Rate and Transit Guide related to pre 9:00 hrs, pre 10:30 hrs and pre 12:00 hrs delivery services mean that DHL will make every effort for time definite delivery within the timeframes outlined and due to Money-back guarantee. For more information on the average transit time please contact DHL Express office in your city or visit [express.dhl.ru](https://www.dhl.com/express). In the event of late delivery, we guarantee a money-back of fixed charge per Premium 9:00/10:30/12:00 including fuel surcharge.

** For more information on the availability of these services in your location please contact your nearest DHL office.

*** For all shipments transported through DHL network, standard shipment restrictions and conditions (as specified in the standard delivery terms on DHL waybill) and conditions of money-back guarantee (as published at [express.dhl.ru](https://www.dhl.com/express)) are applicable.

**** Service capability may change during the year. For more information on the availability of this service in your location please contact your nearest DHL office.

A shipment is deemed unacceptable if its packaging is absent or inadequate, or if transporting the shipment would present risks of damaging equipment, other packages or injuring personnel. DHL reserves the right to either not accept or return the shipment to the shipper. These network restrictions are subject to change with 30 days' notice.

SERVICE OFFERING

Connecting Your World

Sustainability

► Service Offering

How to Ship with DHL Express

Digitalization

Zones and Rates

Export
ServicesEnabling
Your GrowthOptional
Services

Surcharges

Customs
Services

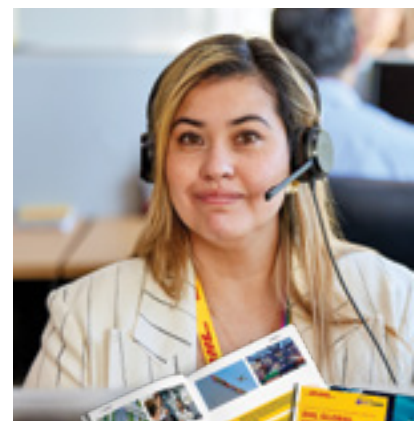
ENABLING YOUR GROWTH

We aim to empower our customers' success, not only through excellence and innovation, but also by arming them with research and insights. Discover two tools here that can help you plan for the future.

ARE YOU CONNECTED?

To be successful in today's evolving world, it is crucial to understand trends around connectedness and globalization.

The latest edition of the [DHL Global Connectedness Report 2024](#), released in partnership with New York University's Stern School of Business, revealed a remarkable finding: even in times marked by severe conflict, globalization reached a record high in 2022 and remained near that level in 2023.



Globalization continues

- Despite recent crises, globalization shows no signs of reversing, due to the resilience and growth of international flows of trade, capital, information and people.
- Globalization has not given way to regionalization. Most international flows have taken place over stable or longer distances.



- The world's current depth of global connectedness is only 25%.
- There is still ample room for growth. The world's absolute level of globalization remains limited; domestic flows still far exceed international flows.

LOGISTICS INSIGHTS: SHAPING YOUR TOMORROW

What are the social, business and technology trends disrupting the logistics industry? What do they mean for your business? The [Logistics Trend Radar](#) examines increasingly important trends: 40 in all. Two very current clusters emphasized in more detail are **Sustainability** and **Artificial Intelligence (AI)**.

The Logistics Trend Radar looks at Sustainability and the logistics solutions that address this, from Renewable Energy Infrastructure to Sustainable Fuels and more. Special focus is also given to many aspects of AI that influence logistics and the supply chain, from Advanced Analytics, AI Ethics, Audio AI and Computer Vision to Generative AI.

Shape your tomorrow with sharp and timely insights. Take advantage of the Logistics Trend Radar research to discover how you can leverage key trends within your supply chain.

LOGISTICS
TREND RADAR 7.0
Insights. Shaping Tomorrow.

The future is arriving fast! And DHL is here to support you at every step of your journey.

© DHL Logistics Trend Radar is a registered trademark of DHL International GmbH, Germany



SERVICE OFFERING

Connecting Your World
Sustainability
► Service Offering
How to Ship with DHL Express
Digitalization
Zones and Rates

- Export Services
- Enabling Your Growth
- Optional Services
- Surcharges
- Customs Services

OPTIONAL SERVICES*

GoGreen Plus

When selected, DHL will reduce (inset) CO2 emissions from air transport through the purchase of Sustainable Aviation Fuel (SAF). SAF can reduce lifecycle carbon emissions by up to 80% compared to traditional jet fuel. GoGreen Plus – Carbon Reduced service, supports Scope 3 emission reductions in alignment with the Science Based Target initiative. The process is audited annually by SGS (Société Générale de Surveillance) to ensure compliance with regulations and standards. Alternative reduction levels and CO2 emission reports are available on contractual basis only.

To \ From	Asia	Europe	Americas	ROW
Asia	26,0	54,0	65,0	52,0
Europe	124,0	53,0	96,0	32,0
Americas	116,0	56,0	36,0	97,0
ROW	86,0	46,0	82,0	19,0

* All rates are stated in roubles exclusive of VAT.
Tariff is calculated for each full and non-full kilogram. Each non-full kilogram is rounded up with increment of 0.5 kg.

Dedicated Pickup

If your business needs a dedicated vehicle to collect unusual shipments, or a pickup outside normal business hours, we can arrange this for you.

Dedicated Delivery

On customer request, an immediate or non-routine, once-only delivery of a shipment within a normal working day or a holiday that involves a specific vehicle such as tail lift truck or more than one courier.

Saturday Pickup

In countries where Saturday is not a normal working day, DHL can arrange an ad-hoc pickup of smaller shipments up to 30kg. The service is available at selected postal locations only.

Saturday Delivery

We offer Saturday delivery services to key cities in more than 70 countries.

Shipment Insurance**

We recommend this comprehensive protection for your valuable or personal shipments, giving you peace of mind in the unlikely event of physical damage or loss. The service is subject to specific limitations and exclusions as described in our [Terms and Conditions](#).

Extended Liability

DHL Express always takes the greatest of care with your documents. Unfortunately, accidents can sometimes happen and our Extended Liability service will provide you with additional peace of mind and financial protection. The fixed compensation is 45 000 RUB in case of loss, regardless of document value.

Shipment Preparation

This is a convenient, fast and reliable service for seasonal or irregular shipments that require extra resources for their preparation. DHL manages the entire process of waybill preparation, content selection, labeling and packaging, then sends the shipments to the designated addresses.

Packaging Supplies

Charges apply for all DHL standard packaging items including plastic flyers provided in bulks or stacks.



* For more information on the availability of these services in your location please contact your nearest DHL office. Please make a request for these optional services when booking DHL courier. DHL reserves the right to apply additional charges for these services as well as any not shown in this guide.
** Transportation with the declared value.

SERVICE OFFERING

Connecting Your World
Sustainability
► Service Offering
How to Ship with DHL Express
Digitalization
Zones and Rates

Export Services	Enabling Your Growth	Optional Services	Surcharges	Customs Services
-----------------	----------------------	-------------------	------------	------------------

OPTIONAL SERVICES*

Verbal Notification
Customer Service will contact you by phone and provide verbal updates on agreed key transport events or incidents with a potential impact on transit time.

Hold for Collection
On shipper request, a shipment is held at the default DHL delivery facility at destination for consignee collection, rather than attempt a delivery at the receiver’s address. The service is booked through Customer Service or supporting shipping tools. The destination will notify the receiver when and at which facility the shipment is ready to collect. A consignee cell phone number is mandatory.

Residential Address
Customers shipping to a home or private residence can activate specific delivery options by designating the delivery address as residential. For such shipments, DHL will proactively notify the receiver via email or SMS about the shipment’s progress. Receivers can then select the most suitable delivery option via On Demand Delivery.

Direct Signature
If you are sending sensitive documents or high value contents you can request DHL to obtain a direct signature from the consignee or a representative at the delivery address. DHL will ensure your shipment is not re-directed, or delivered at an alternative address.

Adult Signature
Delivery of a shipment to an adult. DHL will obtain a delivery signature from an adult at the stipulated delivery address.

Change of Billing
This applies when a customer requests a change of defined billing information on an already issued invoice, which will result in a reissuing of the invoice and, in case of an account change, crediting of the old account and debiting of the new.



* For more information on the availability of these services in your location please contact your nearest DHL office. Please make a request for these optional services when booking DHL courier. DHL reserves the right to apply additional charges for these services as well as any not shown in this guide.

DUTY BILLING SERVICES

Duty Tax Paid
At customer’s request, DHL clears the shipment at destination and arranges for the applicable import duties, taxes and regulatory charges to be invoiced to a specified DHL account at origin or third country, rather than the receiver of the shipment being billed at destination. Charges apply only in case of customs payments, duties and other fees being charged for customs declaration in the country of destination.

Duty Tax Importer
At customer’s request, DHL clears the shipment at destination and arranges for any applicable import duties, taxes and regulatory charges to be invoiced to a specified DHL account at destination. The duty tax payer will be invoiced an extra charge based on a flat rate or a percentage of the fiscal charges that were advanced.

SERVICE OFFERING

Connecting Your World
Sustainability
► Service Offering
How to Ship with DHL Express
Digitalization
Zones and Rates

Export Services	Enabling Your Growth	Optional Services	Surcharges	Customs Services
-----------------	----------------------	-------------------	------------	------------------

SURCHARGES*

Fuel Surcharge

The jet fuel surcharge will be based on the daily average spot prices for U.S. Gulf Coast (USGC) kerosene-type jet fuel, as reported by the U.S. Department of Energy between third week release of prior month to third week release of actual month.

The diesel fuel surcharge will be based on the daily average spot prices for U.S. Gulf Coast (USGC) Ultra-Low-Sulfur No. 2 Diesel Fuel, as reported by the U.S. Department of Energy between third week release of prior month to third week release of actual month.

For example, the daily average price for fuel from 18th April to 15th May is used to determine the applicable surcharge in June.

The Fuel Surcharge applies to transportation charges on all services and to the following surcharges (where applicable): Saturday Delivery, Saturday Pickup, Elevated Risk, Demand Surcharge, Emergency Situation, Remote Area Delivery, Remote Area Pickup, Dedicated Pickup, Dedicated Delivery, Residential Address, Overweight Piece, Oversize Piece, Non-Stackable Pallet and Non-Conveyable Piece.

DHL reserves the right to change the fuel surcharge index and table with or without notice. Both the amount and duration of the surcharge will be determined at DHL's sole discretion.

Remote Area

If you need to send a parcel or a document to a remote location anywhere in the world DHL will deliver the shipment you need. Special tariffs apply. The list of remote locations is available at express.dhl.ru or on pages 24-34 of this Guide.

Non-Stackable Pallet

This fixed surcharge is applied to every pallet within a shipment that cannot be stacked, either on request by the shipper, or because of its shape, content or packaging. This surcharge does not apply to pallets below 30kg.

Overweight Piece

A fixed surcharge is applied to every piece, including a pallet that exceeds a scale or volumetric weight of 70kg.

Oversize Piece

This fixed surcharge applies to every piece, including a pallet, with a single dimension in excess of 100cm. Does not apply to pieces already subject to Overweight Piece surcharge.

Non-Conveyable Piece

This surcharge applies to any piece within a shipment with an actual weight between 25kg and 70kg. Does not apply to pieces already subject to the Overweight or Oversize Piece Surcharges.

Demand Surcharge

One or more Demand Surcharges will apply to shipments during a period of high demand. A period of high demand is to be determined by DHL at its own discretion but may include a time of high demand for shipping services or a period with high operational cost. Details regarding the application of Demand Surcharges are set forth at mydhl.express.dhl and will be subject to change upon prior notice. Demand Surcharges apply cumulatively if a shipment and/or individual pieces meet more than one of the specified criteria. Demand Surcharges apply in addition to the rates and any other applicable charges.

Emergency Situation

A temporary surcharge, which allows us to cover operating cost increases due to an emergency situation out of DHL's control. Change in market dynamics and air capacity availability is reflected through regular price adjustments. The charge will be applied pro rata based on the chargeable weight (invoiced weight) of a shipment.

Dry Ice (UN1845)

A surcharge is applied when the transportation of shipments involves handling Dry Ice (UN1845) as a freezing agent for non-dangerous goods such as diagnostic specimens. Contractual agreement required.

Biological Substance (UN3373)

Shipments containing Biological Substances Category B (UN3373) or genetically modified organisms as per UN3245 are only accepted in combination with DHL Medical Express. Contractual agreement required.

* For more information on the availability of these services in your location please contact your nearest DHL office. Please make a request for these optional services when booking DHL courier. DHL reserves the right to apply additional charges for these services as well as any not shown in this guide.

SERVICE OFFERING

Connecting Your World
Sustainability
► Service Offering
How to Ship with DHL Express
Digitalization
Zones and Rates

Export Services	Enabling Your Growth	Optional Services	Surcharges	Customs Services
-----------------	----------------------	-------------------	------------	------------------

➔ SURCHARGES*

Lithium Batteries Section II**

Shipping Lithium Batteries *with* equipment

A service charge will be assessed on Lithium-Ion and Lithium-Metal batteries **with** equipment. Packaging must be compliant with the appropriate IATA Packing Instruction (PI): 966 for Lithium-Ion and 969 for Lithium-Metal, Section II respectively. Accepted from approved shippers only.

Shipping Lithium Batteries *in* equipment

Shipments containing Lithium-Ion or Lithium-Metal batteries **in** equipment are accepted only in compliance with the appropriate IATA Packing Instruction (PI): 967 for Lithium-Ion and 970 for Lithium-Metal, Section II respectively.

DHL **will not accept** any shipment that is known or suspected to contain defective or damaged batteries.

Address Correction

A fixed surcharge is applied per shipment when the destination address provided by the Shipper is incomplete, outdated or incorrect and DHL is subsequently unable to deliver the shipment. DHL searches and determines the correct address to complete the delivery.

Data Entry

This fixed surcharge applies for each shipment consigned with non-electronic, paper based manual waybills. Electronic shipping documentation incurs no additional charges. Will not be applied when ordering some of additional services. Please check the list of these services: <https://express.dhl.ru/en/info/dop/>.

Security Charges

Additional surcharges may apply when shipping to or importing from a destination country where DHL is operating at elevated risk due to continuous state of war, civil unrest, or continuous threats from terrorism (**Elevated Risk**), or when shipping to or importing from a destination country that is subject to trade restrictions imposed by the UN Security Council or by national legislation such as the European Union or the US Office of Foreign Assets Control (OFAC) (**Restricted Destination**).

Premium 9:00/10:30/12:00

A fixed premium charge applies to DHL Express 9:00/10:30/12:00 service for international shipments.



* For more information on the availability of these services in your location please contact your nearest DHL office. Please make a request for these optional services when booking DHL courier. DHL reserves the right to apply additional charges for these services as well as any not shown in this guide.
** Please alert DHL Express whenever you intend to send any shipments containing Lithium Batteries. Our team of experts will be pleased to guide you through the latest IATA Dangerous Goods Regulations.

SERVICE OFFERING

Connecting Your World

Sustainability

► Service Offering

How to Ship with DHL Express

Digitalization

Zones and Rates

Export
ServicesEnabling
Your GrowthOptional
Services

Surcharges

Customs
Services

CUSTOMS SERVICES

Navigating the customs landscape is made easier by DHL's extensive knowledge and experience of both standard and non-routine customs-clearance processes. Get answers to many of your questions with our new online tool, [My Global Trade Services](#) tool, which will help you expand across borders – and concentrate on your core business.

- All non-document shipments require a commercial invoice or a proforma invoice.
- Our customs specialists are ready to provide advice based on about 35 years experience in customs clearance procedures in accordance with Russian customs legislation. For more information on customs services please contact your nearest DHL office.
- Supplementary clearance services are available.
- Customs-related terminal handling services are available

Customs Declaration Services and the Range of Terminal Cargo Handling Services including Loading and Unloading

The whole range of tasks related to arranging customs declaration, including analysis of shipping documentation, establishing of HS Codes, compiling sets of documents, assistance in drawing up standard letters on behalf of the client, drawing up of customs declaration forms, as well as the range of services related to terminal cargo handling, including loading and unloading, and registration and logging of cargo at bonded warehouse storage facilities. Arrangement of customs declaration also includes submission to customs authorities of customs declaration forms, and the full set of documents and records for the goods, and attendance at both customs inspections and clearance, and at the release and return of goods from storage.

Storage of Goods at Bonded Storage Warehouse

There is a single tariff for all cargo moving through DHL network. Payment is not applicable to goods storage on the first weekend or public holidays after arrival, if they fall earlier than on the fourth working day after the cargo has been placed in storage.

Multiline entry

Charges apply when extra lines are recorded on the customs clearance, for example with different commodities or different countries of manufacture.

Specialised Forms of Inspection (veterinary, phytosanitary, DRM, health and safety)

Veterinary, phytosanitary and health and safety inspections are carried out in cases where HS Codes correspond to the relevant control measures. These are obligatory for all goods of vegetable and animal origin, as well as those goods in direct contact with humans capable of causing harm to health.

DRM – is the control of fissile and radioactive materials. This service consists of the receipt of the requisite documentation from the state supervisory authorities.

Export Declaration

Applies in countries where an export declaration is required for shipments containing controlled commodities or exceeding a certain value threshold or weight. Where automated export

systems are available to the public, shippers may avoid the charge by submitting the export declaration online. In case of IMP billed shipments DHL will submit the export declaration in order to accelerate the export at origin and pass the charge to the importer's account.

Arranging Preliminary Inspections

This is carried out where applicable for the purposes of identifying the load, ascertaining the quantity, weight, name and intended use of the goods. The preliminary inspection is necessary for the assignment of the correct HS Code for declaration of the goods to the customs authorities. It is applicable in instances where accompanying documentation lacks sufficient information required for customs declaration of the cargo, where discrepancies with the goods records declared in the shipping documents have been previously discovered.

Adjustment of information in Customs Declaration (per Customs Declaration)

DHL provides the service of compiling the adjustment to customs values document.

Representing of Represented Entity within additional control of functional departments of Customs

Representation of client's interests at conducting of inspections of declared records by customs authorities departments. Required in cases where terms for approval, or of a decision taken, have been entrusted to specialized customs departments. For example confirmation of HS code or approval or determination of goods' customs value etc.

Preparation of the set of documents

Preparation of the set of documents (beyond the scope of standard documentation), required for declaring goods to the customs authorities.

Examples:

- Research and preparation of technical description for goods;
- Preparation of translations;
- Maintenance of database for client's goods;
- Compiling invoices and translating their contents.

Receipt of Confirmation from Border Customs Officials of De Facto Goods Exportation

Presentation of goods to border customs officials, receipt and dispatch to client of written confirmation of de facto exportation in cases of export.

Applicable on request of the client only for cargo subject to individual goods declarations.

Physical Intervention

A surcharge applies for shipments intercepted for physical examination by customs authorities. Arrangements for inspections may also include full or partial unloading of a vehicle, the specific marking of prototypes, mutilation of samples or the examination of shipment content.

HOW TO SHIP WITH DHL EXPRESS

Connecting Your World

Sustainability

Service Offering

► **How to Ship with DHL Express**

Digitalization

Zones and Rates

Preparing Your Shipment

Packaging Your Shipment

Paying for Your Shipment

PREPARING YOUR SHIPMENT: AS EASY AS 1-2-3

1 Shipment weight

- Please weigh and measure your shipment.
- If you are sending a large but lightweight shipment, where its volumetric (dimensional) weight exceeds its actual weight, the cost of the shipment is calculated on the space your consignment takes up on the aircraft. This is a standard IATA method. To calculate the volumetric weight of your shipment, simply multiply the length by height by width in centimeters, then divide the total sum by 5,000 for each piece in the shipment.
- Any piece in the shipment may be re-weighed and/or re-measured by DHL to confirm this calculation.

2 Documentation required: waybill

- All shipments sent with DHL Express need to have a fully completed DHL waybill or label securely attached to each piece. This will enable the successful movement of your shipment through the DHL network. Each waybill or label is individually numbered to allow you to track your shipment from collection through to delivery.
- Your shipment may also need to be accompanied by customs documentation, such as a commercial or proforma invoice, as well as additional paperwork depending on the contents and value of the shipment and the country you are sending to.

3 Documentation required: invoice

- A commercial or proforma invoice is required when sending non-document shipments to countries and territories outside your origin country or customs union. This is essentially a declaration containing all the details of a transaction and is used by customs authorities to assess if duties or taxes are payable.
- A commercial invoice is used when goods are part of a commercial transaction or intended for resale.
- A proforma invoice is used when sending goods of no commercial value (for example, when sending samples).



HOW TO SHIP WITH DHL EXPRESS

Connecting Your World
Sustainability
Service Offering
► How to Ship with DHL Express
Digitalization
Zones and Rates

- Preparing Your Shipment
- Packaging Your Shipment
- Paying for Your Shipment

PREPARING YOUR SHIPMENT INVOICE

This invoice template covers the key data elements required for a successful customs clearance. To help us ensure the service we provide is efficient and high-quality, visit mydhl.express.dhl for more guidance.

COMMERCIAL INVOICE

SENDER

Company Name:
Contact Name:
Building Name:
Street Name & Number:
Postcode:
City/Country:
Business/Private:
Phone:
Email:
Tax ID/VAT Number:
EORI Number:

GENERAL INFORMATION

Date:
Waybill Number:
Invoice Number:
Shipment Reference Number:
Receiver Reference Number:

RECEIVER

Company Name:
Contact Name:
Building Name:
Street Name & Number:
Postcode:
City/Country:
Business/Private:
Phone:
Email:
Tax ID/VAT Number:
EORI Number:

BILLED TO/IMPORTER OF RECORD (IOR) (if different from Receiver)

Company Name:
Contact Name:
Building Name:
Street Name & Number:
Postcode:
City/Country:
Business/Private:
Phone:
Email:
Tax ID/VAT Number:
EORI Number:

OTHER REMARKS

Please add any additional critical information or specific country clearance requirements that might be relevant e.g. bank details, special formalities etc.

Line Number	Full Description of Goods	Commodity Code <small>(Full Import HS Code Preferred)</small>	Country of Origin	Qty	Unit Value & Currency	Sub-Total Value & Currency	Net Weight	Gross Weight
1								
2								
3								
						Total Goods Value & Currency	Total Net Weight	Total Gross Weight

Number of Invoice Line Items:
Total Units:
Number of Pieces:

Reason for Export:
Type of Export:
INCOTERM:
INCOTERM Place:

Carrier:
Ultimate Consignee:

Export License Number:
Import License Number:

Insurance Cost:
Freight Cost:
Other Costs:
VALUE (for Customs Purposes):
Import Customs Duties – *pre calculated*
Import Taxes (VAT/GST) – *pre calculated*
TOTAL (with Import Customs Duties/Taxes):

Terms of Payment:
Payer of GST/VAT:
Duty/Tax Billing Svc:

I/we certify the information on this invoice is true and correct and that the contents of this shipment are as stated above.

Name: _____ Title: _____ Email: _____

Date: _____ Signature: _____

HOW TO SHIP WITH DHL EXPRESS

Connecting Your World

Sustainability

Service Offering

► How to Ship with DHL Express

Digitalization

Zones and Rates

Preparing Your Shipment

Packaging Your Shipment

Paying for Your Shipment

PACKAGING YOUR SHIPMENT

To ensure that your shipments travel safely and securely through the DHL Express global network, it is important that they are packaged and labeled correctly.

Packaging guidelines

- If you are re-using envelopes or boxes, please ensure that old labels and markings are removed
- Securely fix a waybill to each piece in your shipment. The waybill can be thought of as the shipment's airline ticket and it will delay delivery if it becomes separated from your shipment
- The barcodes on the waybill are scanned at numerous points during your shipment's journey. Please ensure the barcode is flat and not covered by tape, shrinkwrap or strapping
- Place a waybill on the top or side of each piece in your shipment and please ensure it does not overlap the corners or edges of boxes
- Use adequate protective wrapping for fragile or delicate items and ensure they are packed as far away as possible from the corners of boxes
- To prevent injury to our employees, please pay special attention to the packaging of sharp items. There should not be any possibility of the contents piercing the packaging
- Any individual pieces over 70kg should be placed on a pallet. If you are sending a multi-piece shipment, it is not necessary to place the individual pieces on a pallet unless they exceed 70kg. For example, a shipment comprising four 25kg pieces does not have to be placed on a pallet

DHL packaging

We offer a range of high-quality DHL-branded packaging items, suitable for shipping items of all shapes and sizes.

The items available include:

- Flyer bags
- Cardboard document envelopes
- Boxes in a range of sizes
- Tubes
- Bottle boxes

For more information on the range of packaging available, please contact your DHL Account Manager or local Customer Service team.

Prohibited and Restricted Commodities*

Prohibited Items

1. Animals, fish, birds (live) (Including mammals, reptiles, spiders, fish and birds).
2. Human remains or ashes in any form. This includes human embryos, placenta and ashes formed as gemstones.
3. Precious metals and bullions (in ingots, coins, etc.); precious and semi-precious stones; articles of precious metals and bullions, precious and semi-precious stones.
4. Cash (bank notes, currency notes and coins).

5. Military items: firearms and edged weapons, ready for use for their intended purpose; explosives; ammunition; shells; cartridges; explosive devices containing substances that are resistant to storage and transportation, etc.; parts, mechanisms of firearms, accessories (sight, trigger, bolts and nuts, mounts, sights, night vision devices, butts, silencers, flashlights, magazines, flash silencers and unmasking devices, etc.); other military items subject to control/licensing (items "designed or modified for military use", namely: spare parts for tanks and anti-aircraft missiles, control panels, navigation equipment, control units, ammunition counters, fire control device, instrumentation sensors speed, spare parts and components designed or modified for military use, spare parts or equipment for aircraft and helicopters designed or modified for military use, etc.).
6. Ivory and illegal goods. Any goods considered to be illegal (as determined either by the exporting country, transit points, importing country or international law) are prohibited for carriage. E.g. pornography, pirated goods, goods certain narcotics (heroin, cocaine), counterfeit products, smoking blends containing the following ingredients: sage predictors (*Salvia divinorum*), hawaiian rose (*Argyrea nervosa*), blue lotus (*Nymphaea caerulea*).
7. Hunting trophies (animal skins, stuffed animals or birds, horns, skulls, etc.).
8. Toy and pneumatic guns.
9. Imitation or replica firearms, ammunition, explosives/explosive devices. Electrical shock equipment, guns with electrical shock, electric shockers or any other items capable of producing an electric discharge with the aim of causing harm, injury or temporary disablement (directly or indirectly intended for these purposes). Objects that may potentially be used as a weapon, but this is not their direct purpose (kitchen



*For more information on restricted commodities please contact your nearest DHL Express office.

HOW TO SHIP WITH DHL EXPRESS

Connecting Your World

Sustainability

Service Offering

► How to Ship with DHL Express

Digitalization

Zones and Rates

Preparing Your Shipment

en knives), including decorative products (sabres, swords, etc.) are accepted for carriage without restrictions, but the sender shall attach the certificate /passport (with stamp), that the given object is not a cold weapon.*

10. Medicinal Cannabis.

11. Counterfeit goods in breach of IPR.

12. Shipments from 'cash shippers' or any shipments tendered at retail/service points that contain a combination of electronic/electrical devices AND liquids, gels, or gel-like substances.

Restricted items.

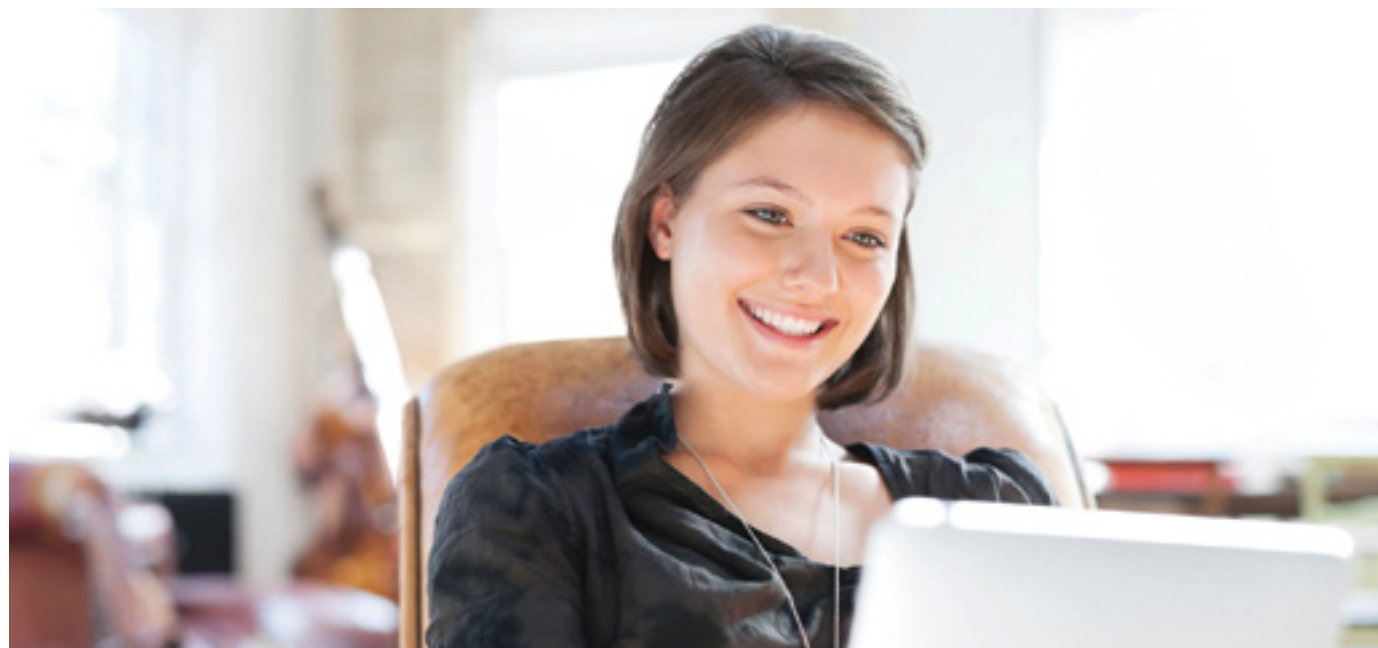
1. Antiques and works of art.
2. Excise stamps/post stamps.
3. Raw tobacco and tobacco products (cigarettes, cigars, cigarillos, smoking and pipe tobacco, e-cigarettes and their components).
4. Negotiable instruments in bearer form (whether cash-like or not). E.g. activated SIM cards for mobile telephones, blank or activated credit or cash dispenser cards, blank checks, event tickets whether cash-like or not, lottery tickets, money or postal orders, pre-paid phone cards, tickets (blank stock), Traveller's Cheques, vouchers/tokens, unused stamps, gift cards etc. DHL prohibits the transportation of negotiable instruments (documents) to bearer. However, as an exception, certain approved customers who have significant volumes of cargo on DHL's network may be permitted to carry travelers checks and activated credit cards (GSOP Shipment and Product Handling Policy and Standards - Travelers Checks and Activated Credit Cards).

Packaging Your Shipment

5. Perishable goods: plants seedlings, fresh vegetables and fruits, mushrooms, berries, grass, frozen food and food that require temperature maintenance, not placed in a thermal box.
6. Jewelry**** worth more than 100,000 euros** for the entire cargo for legal entities. For shipments to individuals, the limit is to exceed 25,000 euros** per shipment.
7. Watches without precious metals****. Individual items worth more than 100,000 euros** of total shipment value for legal entities. When shipped to private individuals, the value of total shipment is limited to 25,000 euros**. If the assessed value does not exceed specified limits, the watches are accepted without restrictions.*
8. Valuable collectibles, including but not limited to the first editions of books or comics, trade cards, worth more than 10,000 euros** the total shipment value for legal entities. When shipped to private individuals, the value of total shipment is limited to 2,000 euros.**

PAYING FOR YOUR SHIPMENT

You can pay for DHL Express services either with cash or a credit card***. You can open an account with DHL Express to pay via bank transfer; and all account customers receive invoices on a pre-agreed basis. For more details, please get in touch with a Customer Service Advisor at your local DHL Express office or go to express.dhl.ru/en.



* Prohibited to import to Russia

** Or equivalent in RUB.

*** Availability of payment in cash or by credit card to the courier is limited.

For more information on restricted commodities please contact your nearest DHL Express office.

**** Special conditions of shipping are applied for customers.

The maximum value of the shipment for cash customers should not exceed 10,000 euros**. Extended liability is available only for sending shipments worth up to 10,000 euros**.

DIGITALIZATION

Connecting Your World

Sustainability

Service Offering

How to Ship with DHL Express

▶ Digitalization

Zones and Rates

Digitalization is one of the most important trends impacting logistics, and it is one of the key pillars of DHL Group's strategy. Through digitalization we bring benefits for our customers, our operations and our own people.

We invest continually in market-leading technologies to help our customers to manage and monitor shipments, create shipping labels, get quotes, schedule courier pickups, connect with us and more. Digitalizing our operations provides more transparency, allowing us to better anticipate and meet our customers' needs.

MYDHL+

MyDHL+

MyDHL+ re-imagines the way the shipping business does business, by combining the tools and services our customers use most. With its mobile friendly and intuitive interface, customers can now import, export, schedule a pickup, track shipments and pay bills more quickly than ever – all in one visit, with one password and zero headaches. MyDHL+ makes it incredibly easy to navigate the complexities of international shipping.

mydhl.express.dhl

DHL EXPRESS COMMERCE

Take your website international with DHL Express Commerce. Offer your customers all the benefits of DHL Express at your checkout in real-time. Import, manage and ship their orders quickly and efficiently with no complicated development. Add the power of DHL Express to your e-commerce business quickly and easily, giving you the competitive edge. DHL Express Commerce integrates with the biggest e-commerce platforms, including: Magento, Shopify, WooCommerce, Amazon and eBay.

MY GLOBAL TRADE SERVICES

MyGTS

My Global Trade Services (MyGTS) is your digital advisor on cross-border customs information. It is an online self-service portal that helps users pre-plan shipments. If you are wondering what the harmonized shipping (HS) codes are for your goods, what the estimated total cost of your shipment will be, what can help get your goods cleared or what documentation may be required, find the answers and more on MyGTS.

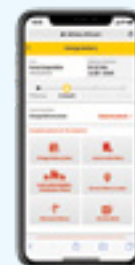
The benefits? Pre-plan your shipment journeys to minimize delays and unexpected customs or tax costs by better understanding customs requirements and potential prohibitions and restrictions.

dhl.com/express/mygts


ON DEMAND DELIVERY

DHL's On Demand Delivery tool keeps receivers informed of shipment progress, allowing them to reschedule, reroute, release or conveniently collect from a DHL Service Point. It is an innovative, easy-to-use, mobile-friendly service, especially for residential deliveries.

Designed to enhance the online shopper's experience, the service is available globally, meaning consistent service standards and a harmonized user experience.


ondemand.dhl.com


Change
delivery date



Leave in safe place



Deliver to
alternative address



Collect from Service
Point or locker



Vacation hold



Leave with neighbor,
concierge or guard

DIGITALIZATION

EXPRESS.DHL.RU

Our website provides a comprehensive guide to DHL Express shipping services, as well as transport news, service updates and contact details. To make doing business with us even easier, the site features interactive tools that include online booking, tracking and a volumetric weight calculator.



ROBOTICS

Driven by rapid technological advancements and increasing supply chain complexity, robotics solutions are entering the logistics environment, boosting productivity and driving zero-defect processes.

Robots are adopting more roles at DHL Express, assisting workers with the most repetitive and labor-intensive tasks and freeing them up to do higher-order, customer-facing activities. Examples include the use of articulated robotic arms for inducting flyers and small parcels at 99.99% accuracy, ensuring faster processing and fewer mis-sorts. We have four such robots in use globally, with plans for more in the future.

Our robots help connect your shipments through our network at higher speed and quality, by giving operations extra help.

[Connecting Your World](#)
[Sustainability](#)
[Service Offering](#)
[How to Ship with DHL Express](#)
[▶ Digitalization](#)
[Zones and Rates](#)


DIGITAL TRUST

Logistics requires transferring data and content around the world and we embrace a responsibility to do this securely. Our standards led by our Binding Corporate Rules and by our [Data Privacy Policy](#) apply throughout the DHL Group and are approved by the Supervisory Authorities. We maintain a comprehensive [Information Security](#) and [Data Protection](#) approach based on ISO/IEC 27001:2013 and GDPR, to ensure a high standard when managing customer information assets and personal data. We aim to provide a rapid response to any security incident via our 24x7 Cyber Defence Centre (CDC) with global coverage and our global DPO community.

DHL Group acts as controller in respect of any personal data it receives from customers and holds to effectively provide transportation services and in regard to the delivery of any shipments or documents that it processes to perform its contractual obligations. DHL Group will act as a data controller when an individual is executing their rights under privacy legislations.

ZONES AND RATES

Connecting Your World
Sustainability
Service Offering
How to Ship with DHL Express
Digitalization
► Zones and Rates

Calculate the Price of Your Shipment	Optional Services	Surcharges	Customs Services	Service Capability and Rating Zones	Export Services
--------------------------------------	-------------------	------------	------------------	-------------------------------------	-----------------

OPTIONAL SERVICES

Optional Services*	How we charge	Additional charge
GOGREEN Plus	Per kg	Min. 32 RUB***
Dedicated Pickup / Saturday Pick up	Per kg; per shipment	Holiday pickup **** the tariff is 45 RUB per kg, min. 2 880 RUB** per shipment; and Saturday pickup the tariff is 2 880 RUB**
Saturday Delivery	Per shipment	The tariff is 3 840 RUB**
Shipment Insurance	Per shipment	1% of declared value, minimum charge is 1 000 RUB***
Extended Liability	Per shipment	The tariff is 480 RUB***
Shipment Preparation	Per shipment	The tariff is 640 RUB***
Packaging	Per shipment	The tariff depends on the type of packaging ¹
Duty Tax Paid	Per shipment	2% of customs duties and taxes, minimum charge is 1 550 RUB***
Verbal Notification	Per shipment	The tariff is 480 RUB***
Residential Address	Per shipment	The tariff is 500 RUB**
Direct Signature	Per shipment	The tariff is 500 RUB***
Adult Signature	Per shipment	The tariff is 500 RUB***
Change of Billing	Per bill	The tariff is 1 900 RUB***

CUSTOMS SERVICES

Customs Services	How we charge	Additional charge
Formal Clearance	Per shipment	Depends on shipment value
Representing of Represented Entity within additional control of functional departments of Customs	Per shipment	The tariff is 3 500 RUB***
Bonded Storage	Per shipment	11.0 RUB/kg/day and 630 RUB/shipment/day starting from the 4th day of storage***
Export Declaration	Per shipment	Minimum 23 800 RUB if shipment value is more than 1 000 EUR***
Non-Routine Entry	Per shipment	Minimum 9 900 RUB***
Physical Intervention	Per shipment	The tariff is 3 400 RUB***

¹ The cost of packaging provided upon shipment pickup will be 350 RUB (except for smartphone/laptop/tablet computer boxes).***
* For more information on the availability of these services in your location please contact your nearest DHL office. Please make a request for these optional services when booking DHL courier. DHL reserves the right to apply additional charges for these services as well as any not shown in this guide.
** All rates are stated in RUB exclusive of VAT and fuel surcharge.
*** All rates are stated in RUB exclusive of VAT.
**** The extra charge will be applied to all cash/credit cards shipments.

ZONES AND RATES

Connecting Your World
Sustainability
Service Offering
How to Ship with DHL Express
Digitalization
► Zones and Rates

Calculate the Price of Your Shipment	Optional Services	Surcharges	Customs Services	Service Capability and Rating Zones	Export Services
--------------------------------------	-------------------	------------	------------------	-------------------------------------	-----------------

SURCHARGES

Surcharges*	How we charge	Additional charge
Fuel Surcharge	Variable surcharge	Updated information about Fuel Surcharge is posted monthly at https://express.dhl.ru/en/info/toplivnaya-nadbavka/ . DHL Express reserves the right to change the value of Fuel Surcharge and apply it without notice. DHL Express defines the value and effective period of Fuel Surcharge at their sole discretion.
Remote Area	Per shipment; per kg	The tariff is 50 RUB per kg, minimum 2 100 RUB per shipment.**
Overweight Piece	Per piece	The tariff is 9 120 RUB**
Oversize Piece	Per piece	The tariff is 1 900 RUB**
Non-Conveyable Piece	Per piece	The tariff is 1 900 RUB**
Non Stackable Pallet	Per piece	The tariff is 27 300 RUB**
Dry Ice	Per shipment	The tariff is 10 300 RUB***
Shipping Lithium Batteries****	Per shipment	The tariff is 2 000 RUB***
Address Correction	Per shipment	The tariff is 1 100 RUB***
Data Entry	Per shipment	The tariff is 960 RUB***
Restricted Destination	Per shipment	The tariff is 2 880 RUB***
Elevated Risk	Per shipment	The tariff is 2 880 RUB**
Demand Surcharge	Per kg	The tariff is posted at https://express.dhl.ru/dop
Emergency Situation	Per kg	The tariff is posted at https://express.dhl.ru/dop

* For more information on the availability of these services in your location please contact your nearest DHL office. Please make a request for these optional services when booking DHL courier. DHL reserves the right to apply additional charges for these services as well as any not shown in this guide.

** All rates are stated in RUB exclusive of VAT and fuel surcharge.

*** All rates are stated in RUB exclusive of VAT.

**** Please alert DHL Express whenever you plan to send any shipments containing lithium batteries. Our team of professionals will be happy to advise you on the updated IATA rules of dangerous goods transportation.

ZONES AND RATES

Connecting Your World
Sustainability
Service Offering
How to Ship with DHL Express
Digitalization
► Zones and Rates

Calculate the Price of Your Shipment	Optional Services	Surcharges	Customs Services	Service Capability and Rating Zones	Export Services
--------------------------------------	-------------------	------------	------------------	-------------------------------------	-----------------

CALCULATE THE PRICE OF YOUR SHIPMENT



Determine which zone your destination is in (pages 22-23 and 27-37) and whether yours is a document or non-document shipment.



Choose the type of export service (page 5) and how quickly do you want it to arrive?



Based on weight (page 12), zone and speed, confirm your base price.



Add any optional services and check if any surcharges apply.

Base price + Optional services + Surcharges = Total price

RATE ZONES FOR INTERNATIONAL DELIVERY

Russian rate zone ¹	International rate zone ¹							
	I	II	III	IV	V	VI	VII	VIII
European Russia (Central, Northwestern, Volga ² , Southern, North Caucasian Federal Districts): zones 1–12	1	2	3	4	5	6	7	8
Urals and Siberia (Urals and Siberian Federal Districts, Perm Krai): zones 13–17	1	3	3	4	5	4	7	8
Russian Far East (Far Eastern Federal District): zones 18–19	2	4	6	7	5	3	4	8

¹ Check the rate zone for your city within Russia on pages 24–34. Check the rate zone for your country where you plan pick up or delivery of your shipment on pages 22–23.

² Except Perm Krai.

ZONES AND RATES

[Connecting Your World](#)
[Sustainability](#)
[Service Offering](#)
[How to Ship with DHL Express](#)
[Digitalization](#)
[► Zones and Rates](#)
[Calculate the Price of Your Shipment](#)
[Optional Services](#)
[Surcharges](#)
[Customs Services](#)
[Service Capability and Rating Zones](#)
[Export Services](#)

INTERNATIONAL EXPORT DELIVERY: SERVICE CAPABILITY AND RATING ZONES*

Country	Zone	DHL Express Worldwide**	DHL Express 12:00	DHL Express 9:00
Albania	IV	5		
Algeria	VII	4		
American Samoa	VIII	8		
Andorra	IV	4		
Angola	VIII	7	✓	
Anguilla	VIII	7		
Antigua	VIII	7		
Argentina	VIII	5	✓	
Armenia	II	6		
Aruba	VIII	7		
Australia	VIII	7		
Austria	III	4	✓	✓
Azerbaijan	II	4		
Bahamas	VIII	8		
Bahrain	VII	3	✓	✓
Bangladesh	VII	4		
Barbados	VIII	6		
Belgium	III	4	✓	✓
Belize	VIII	7		
Benin	VIII	4		
Bermuda	VIII	5		
Bhutan	VII	8		
Bolivia	VIII	7		
Bonaire	VIII	7		
Bosnia and Herzegovina	IV	4		
Botswana	VIII	7		
Brazil	VIII	5	✓	
Brunei	VII	7		
Bulgaria	IV	4	✓	
Burkina Faso	VIII	4	✓	
Burundi	VIII	5		
Cambodia	VII	6	✓	
Cameroon	VIII	6	✓	
Canada	V	5	✓	
Canary Islands, The	IV	4		
Cape Verde	VIII	12		
Cayman Islands	VIII	6		
Central African Republic	VIII	17		
Chad	VIII	14		
Chile	VIII	5		
China, People's Republic	VI	5	✓	
Colombia	VIII	5	✓	✓
Comoros	VIII	11		
Congo	VIII	4		
Congo, The Democratic Republic of	VIII	6	✓	
Cook Islands	VIII	8		
Costa Rica	VIII	5		
Cote d'Ivoire	VIII	5	✓	
Croatia	IV	4	✓	
Cuba	VIII	8		
Curacao	VIII	7		
Cyprus	IV	5	✓	
Czech Republic, The	III	4	✓	✓
Denmark	IV	4	✓	✓
Djibouti	VIII	7		
Dominica	VIII	7		
Dominican Republic	VIII	7		
Ecuador	VIII	5	✓	
Egypt	VII	3	✓	✓
El Salvador	VIII	5		
Eritrea	VIII	8		
Estonia	III	4	✓	
Eswatini	VIII	5		
Ethiopia	VIII	5		
Falkland Islands	VIII	6		
Faroe Islands	VIII	6		
Fiji	VIII	8		
Finland	III	4	✓	
France	III	4	✓	✓
French Guyana	VIII	7		
Gabon	VIII	6	✓	
Gambia	VIII	7		
Georgia	II	5		
Germany	III	4	✓	✓
Ghana	VIII	6		
Gibraltar	IV	5	✓	
Greece	IV	4	✓	
Greenland	VIII	6		
Grenada	VIII	6		
Guadeloupe	VIII	6		
Guam	VIII	8		
Guatemala	VIII	5	✓	
Guernsey	IV	3	✓	✓
Guinea Republic	VIII	5		
Guinea-Bissau	VIII	11		
Guinea-Equatorial	VIII	7		
Guyana (British)	VIII	7		
Haiti	VIII	7		
Honduras	VIII	6		
Hong Kong SAR China	VI	4	✓	✓
Hungary	III	4	✓	
Iceland	VIII	5	✓	
India	VI	4	✓	
Indonesia	VII	4		
Iran (Islamic Republic of)	VIII	7		
Iraq	VII	6		
Ireland, Republic Of	III	4	✓	✓
Israel	VI	4		
Italy	III	4	✓	✓
Jamaica	VIII	6		
Japan	VI	5	✓	
Jersey	IV	4	✓	✓
Jordan	VII	3	✓	✓
Kazakhstan	I	6	✓	
Kenya	VIII	4	✓	
Kiribati	VIII	11		
Korea, Republic of (South)	VI	4	✓	
Korea, The D.P.R. of (North)***	VII	8		
Kosovo	IV	6		
Kuwait	VII	4	✓	✓
Kyrgyzstan	I	5		
Lao People's Democratic Republic	VII	7		
Latvia	III	4		
Lebanon	VII	4	✓	✓
Lesotho	VIII	7		
Liberia	VIII	7		

* The average transit time is indicated in business days for "express documents" without commercial value, when sent from Moscow. Add 1-4 days when sending from other locations. Delivery time may increase due to customs procedures. Service capability may change. For more information about the possibility of providing services in your city and destinations, as well as delivery date and the ability to send specific shipment you can contact your local DHL office, customer service department by contact numbers +7 (495) 956-1000 and 8 (800) 7000-345 or visit dct.dhl.com.

** Average transit time (business days following the day of pick up).

*** Import Express is not available

ZONES AND RATES

Connecting Your World
Sustainability
Service Offering
How to Ship with DHL Express
Digitalization
► Zones and Rates

Calculate the Price of Your Shipment	Optional Services	Surcharges	Customs Services	Service Capability and Rating Zones	Export Services
--------------------------------------	-------------------	------------	------------------	-------------------------------------	-----------------

INTERNATIONAL EXPORT DELIVERY: SERVICE CAPABILITY AND RATING ZONES*

Country	Zone	DHL Express Worldwide**	DHL Express 12:00	DHL Express 9:00	Country	Zone	DHL Express Worldwide**	DHL Express 12:00	DHL Express 9:00
Libya	VII	10			San Marino	III	5	✓	
Liechtenstein	III	6			Sao Tome and Principe	VIII	7		
Lithuania	III	5	✓		Saudi Arabia	VII	4	✓	✓
Luxembourg	III	4	✓	✓	Senegal	VIII	6	✓	
Macau SAR China	VII	7			Serbia, Republic of	IV	4		
Madagascar	VIII	7	✓		Seychelles	VIII	4		
Malawi	VIII	5			Sierra Leone	VIII	7		
Malaysia	VII	4	✓	✓	Singapore	VII	4	✓	✓
Maldives	VIII	5			Slovakia	IV	4	✓	✓
Mali	VIII	6			Slovenia	IV	4	✓	
Malta	IV	4	✓		Solomon Islands	VIII	11		
Mariana Islands	VIII	8			Somalia	VIII	11		
Marshall Islands	VIII	10			Somaliland, Rep of (North Somalia) ***	VIII	10		
Martinique	VIII	6			South Africa	VIII	3	✓	✓
Mauritania	VIII	8			South Sudan	VIII	7		
Mauritius	VIII	4			Spain	III	4	✓	✓
Mayotte	VIII	11			Sri Lanka	VII	5	✓	
Mexico	VIII	5			St. Barthelemy	VIII	7		
Micronesia, Federated States of	VIII	12			St. Eustatius	VIII	7		
Moldova, Republic Of	II	4			St. Kitts	VIII	6		
Monaco	III	6			St. Lucia	VIII	7		
Mongolia	VII	6			St. Maarten	VIII	7		
Montenegro, Republic of	IV	5			St. Vincent	VIII	7		
Montserrat	VIII	7			Sudan	VIII	8		
Morocco	VII	4	✓		Suriname	VIII	7		
Mozambique	VIII	5	✓		Sweden	III	4	✓	✓
Myanmar	VII	6			Switzerland	III	4	✓	✓
Namibia	VIII	7	✓		Syria	VII	13		✓
Nauru, Republic Of	VIII	11			Tahiti	VIII	6		
Nepal	VII	7			Taiwan	VI	4	✓	✓
Netherlands, The	III	4	✓	✓	Tajikistan	II	5		
Nevis	VIII	7			Tanzania	VIII	7		
New Caledonia	VIII	11			Thailand	VII	5	✓	✓
New Zealand	VIII	7			Timor-Leste	VIII	8		
Nicaragua	VIII	6			Togo	VIII	6		
Niger	VIII	7			Tonga	VIII	11		
Nigeria	VIII	5			Trinidad and Tobago	VIII	6		
Niue	VIII	11			Tunisia	VII	6		
North Macedonia	IV	5			Turkey	III	4	✓	
Norway	IV	5	✓		Turkmenistan	VIII	7		
Oman	VII	4	✓		Turks and Caicos Islands	VIII	7		
Pakistan	VII	4			Tuvalu	VIII	11		
Palau	VIII	11			Uganda	VIII	5	✓	
Panama	VIII	5	✓		United Arab Emirates	VII	3	✓	✓
Papua New Guinea	VIII	8			United Kingdom	III	4	✓	✓
Paraguay	VIII	5	✓		United States Of America	V	5	✓	
Peru	VIII	5	✓		Uruguay	VIII	5		
Philippines, The	VII	5	✓	✓	Uzbekistan	II	5		
Poland	III	4	✓	✓	Vanuatu	VIII	11		
Portugal	IV	4	✓	✓	Vatican City	III	5		
Puerto Rico	VIII	6			Venezuela	VIII	8		
Qatar	VII	4	✓	✓	Vietnam	VII	5		
Reunion, Island Of	VIII	7			Virgin Islands (British)	VIII	6		
Romania	IV	4	✓		Virgin Islands (US)	VIII	7		
Rwanda	VIII	5			Yemen, Republic of	VII	7		
Saint Helena	VIII	10			Zambia	VIII	5	✓	
Salvador	VIII	5			Zimbabwe	VIII	7		
Samoa	VIII	7							

* The average transit time is indicated in business days for “express documents” without commercial value, when sent from Moscow. Add 1-4 days when sending from other locations. Delivery time may increase due to customs procedures. Service capability may change. For more information about the possibility of providing services in your city and destinations, as well as delivery date and the ability to send specific shipment you can contact your local DHL office, customer service department by contact numbers +7 (495) 956-1000 and 8 (800) 7000-345 or visit dct.dhl.com.
** Average transit time (business days following the day of pick up).
*** Import Express is not available

ZONES AND RATES

Connecting Your World
Sustainability
Service Offering
How to Ship with DHL Express
Digitalization
► Zones and Rates

Calculate the Price of Your Shipment	Optional Services	Surcharges	Customs Services	Service Capability and Rating Zones	Export Services
--------------------------------------	-------------------	------------	------------------	-------------------------------------	-----------------

DHL EXPRESS WORLDWIDE EXPORT

Calculating the rate:

1. Check the destination countries available for this service in the table on pages 22–23.
2. Using the table “Rating Zones” on pages 24–34 identify Russian rate zone for your location.
3. Identify rate zone number of the destination country in the table on pages 22–23.
4. Reading across numbers of rate zones for origin location and destination country using a table “Rate zones for international delivery” on page 20 identify rate zone.
5. In the table on the page 35 indicate the weight nearest to the weight of your shipment.
6. Reading across from the weight indicator to rate zone will give you the rate for sending your shipment.

Example:

To send your 7 kg parcel using DHL EXPRESS Worldwide from Ekaterinburg to China:

1. Check whether the service is available to China. The answer is yes.
2. In the list of served locations identify rating zone for Ekaterinburg. It is zone 13.
3. Identify zone number for China. It is zone VI.
4. In the table «Rate zones for international delivery» the intersection of Russian rating zone 13 and international rating zone VI gives zone 4.
5. The intersection of zone 4 and 7 kg weight in the table on the page 35 shows the rate.
6. The rate for your shipment is 61 930 RUB.

ZONES AND RATES

Connecting Your World
Sustainability
Service Offering
How to Ship with DHL Express
Digitalization
► Zones and Rates

Calculate the Price of Your Shipment	Optional Services	Surcharges	Customs Services	Service Capability and Rating Zones	Export Services
--------------------------------------	-------------------	------------	------------------	-------------------------------------	-----------------

RATING ZONES*

Location	Rating Zone	Remote Area
Ababurovo (Leninskiy distr., Moscow Region)	1	
Abakan (Republic of Khakassia)	16	
Abinsk (Krasnodar Territory)	8	
Achinsk (Krasnoyarsk Territory)	16	✓
Adler (Krasnodar Territory)	11	
Adygeysk (Krasnodar Territory)	8	
Aeropot (Tomsk Region)	15	
Afipskiy (Krasnodar Territory)	8	
Agidel (Republic of Bashkortostan)	12	✓
Agryz (Republic of Tatarstan)	4	✓
Akhtyrskiy (Krasnodar Territory)	8	✓
Akinshino (Naro-Fominsky distr., Moscow Region)	1	
Aksay (Rostov-on-Don Region)	8	
Akulovo (Moscow Region)	1	
Alabushevo (Moscow Region)	1	
Alapaevsk (Sverdlovsk Region)	13	✓
Aleksandrov (Vladimir Region)	2	✓
Aleksandrovo (Podolsky distr., Moscow Region)	1	
Aleksandrovsk (Perm Territory)	13	✓
Alekseevka (Alekseevskiy distr., Belgorod Region)	2	✓
Alekseevka (Kinel, Samara Region)	7	
Aleksin (Tula Region)	2	✓
Aleksandrovka (Zelenograd, Moscow)	1	
Aleksandrovskaya (Kurortnyi distr., St. Petersburg)	3	
Alexandrovskaya (Pushkinskiy distr., St. Petersburg)	3	
Aleysk (Altai Territory)	15	✓
Alkhimovo (Podolsky distr., Moscow Region)	1	
Almet'yevsk (Republic of Tatarstan)	4	
Anapa (Krasnodar Territory)	8	
Andreevskoe (Leninskiy distr., Moscow Region)	1	
Andreevskoe (Podolsky distr., Moscow Region)	1	
Angarsk (Irkutsk Region)	17	
Ankudinovo (Naro-Fominsky distr., Moscow Region)	1	
Anna (Voronezh Region)	2	✓
Anzhero-Sudzhensk (Kemerovo Region)	16	✓
Aprelevka (Naro-Fominsk distr., Moscow Region)	1	
Apsheronsk (Krasnodar Territory)	8	✓
Aramil (Sverdlovsk Region)	13	
Arkhangelsk (Arkhangelsk Region)	10	
Arkhangelyskoe (Naro-Fominsky distr., Moscow Region)	1	✓
Armavir (Krasnodar Territory)	8	
Armazovo (Podolsky distr., Moscow Region)	1	
Arsk (Republic of Tatarstan)	4	
Artemovskiy (Sverdlovsk Region)	13	✓
Arzamas (Nizhniy Novgorod Region)	4	✓
Asbest (Sverdlovsk Region)	13	✓
Asha (Chelyabinsk Region)	12	✓

Location	Rating Zone	Remote Area
Astrakhan (Astrakhan Region)	11	
Atamanovka (Trans-Baikal Territory)	17	
Atkarsk (Saratov Region)	9	✓
Aznakaevo (Republic of Tatarstan)	4	
Azov (Rostov-on-Don Region)	8	
Bachurino (Leninskiy distr., Moscow Region)	1	
Baklanovo (Podolsky distr., Moscow Region)	1	
Baksan (Kabardino-Balkarian Republic)	11	✓
Balabanovo (Kaluga Region)	2	
Balakhna (Nizhniy Novgorod Region)	4	
Balakovo (Saratov Region)	9	✓
Balashikha (Moscow Region)	1	
Baranovo (Naro-Fominsky distr., Moscow Region)	1	
Barnaul (Altai Territory)	15	
Barsovo (Khanty-Mansi Autonomous Area – Yugra)	14	
Barysh (Ulyanovsk Region)	9	✓
Bataysk (Rostov-on-Don Region)	8	
Belaya Kalitva (Rostov-on-Don Region)	8	✓
Belebey (Republic of Bashkortostan)	12	✓
Belgorod (Belgorod Region)	2	
Belogorsk (Amur Region)	19	✓
Beloozerskiy (Voskresenskiy distr., Moscow Region)	1	✓
Belorechensk (Krasnodar Territory)	8	
Beloretsk (Republic of Bashkortostan)	14	✓
Belousovo (Kaluga Region)	2	
Belousovo (Naro-Fominsky distr., Moscow Region)	1	✓
Belovo (Kemerovo Region)	16	✓
Beloyarskiy (Sverdlovsk Region)	13	✓
Belozersk (Vologda Region)	2	✓
Beliy (Krasnodar Territory)	8	
Belyy Yar (Khanty-Mansi Autonomous Area – Yugra)	14	
Berdsk (Novosibirsk Region)	15	
Berezniki (Perm Territory)	13	
Berezovka (Krasnoyarsk Territory)	16	
Berezovka (Republic of Bashkortostan)	12	
Berezovskiy (Kemerovo Reg)	16	✓
Berezovskiy (Sverdlovsk Region)	13	
Beslan (Republic of North Ossetia – Alanian)	11	
Biofabrika (Orel Region)	2	
Birobidzhan (Jewish Autonomous Region)	18	✓
Birsk (Republic of Bashkortostan)	12	✓
Biysk (Altai Territory)	15	✓
Blagoveschensk (Amur Region)	19	
Blagoveschensk (Republic of Bashkortostan)	12	✓
Bobrov (Voronezh Region)	2	✓
Bodaybo (Irkutsk Region)	17	✓
Bogdanovich (Sverdlovsk Region)	13	✓

* Service capability includes large settlements only. For more information please contact your nearest DHL Express office.
✓ For remote area locations an additional tariff is applied.

ZONES AND RATES

Connecting Your World
Sustainability
Service Offering
How to Ship with DHL Express
Digitalization
► Zones and Rates

Calculate the Price of Your Shipment	Optional Services	Surcharges	Customs Services	Service Capability and Rating Zones	Export Services
--------------------------------------	-------------------	------------	------------------	-------------------------------------	-----------------

RATING ZONES*

Location	Rating Zone	Remote Area
Bogorodsk (Nizhny Novgorod Region)	4	
Bogotol (Krasnoyarsk Territory)	16	✓
Bolkhov (Orel Region)	2	✓
Bologoe (Tver Region)	2	✓
Bolshoe Pokrovskoe (Naro-Fominsky distr., Moscow Region)	1	
Bolshoe Svinorye (Naro-Fominsky distr., Moscow Region)	1	
Bolshoy Kamen (Primorye Territory)	18	
Bor (Nizhniy Novgorod Region)	4	
Bor (Volkhovskiy distr., Leningrad Region)	3	✓
Borisoglebsk (Voronezh Region)	2	✓
Borodino (Krasnoyarsk Territory)	16	✓
Borovichi (Novgorod Region)	5	✓
Borovsk (Kaluga Region)	2	
Botakovo (Naro-Fominsky distr., Moscow Region)	1	
Bratsk (Irkutsk Region)	17	
Bronnitsy (Moscow Region)	1	✓
Bryansk (Bryansk Region)	2	
Bugulma (Republic of Tatarstan)	4	
Buguruslan (Orenburg Region)	7	✓
Burtsevo (Leninskiy distr., Moscow Region)	1	
Burtsevo (Naro-Fominsky distr., Moscow Region)	1	
Butovo (Moscow)	1	
Buy (Kostroma Region)	2	✓
Buzuluk (Orenburg Region)	12	✓
Bylovo (Podolskiy distr., Moscow Region)	1	✓
Chapaevsk (Samara Region)	7	✓
Chaplygin (Lipetsk Region)	2	✓
Chaykovskiy (Perm Region)	13	✓
Chebarkul (Chelya binsk Region)	13	
Cheboksary (Chuvash Republic)	4	
Chekhov (Moscow Region)	1	
Chelyabinsk (Chelyabinsk Region)	13	
Cherepovets (Vologda Region)	2	
Cherepovo (Leninskiy distr., Moscow Region)	1	
Cherkessk (Karachayevo-Circassian Republic)	11	✓
Chernogorsk (Republic of Khakassia)	16	
Chernomorskiy (Krasnodar Territory)	8	✓
Chistopol (Republic of Tatarstan)	4	✓
Chita (Trans-Baikal Territory)	17	
Chudovo (Novgorod Region)	5	✓
Chufarovo (Ulyanovsk Region)	9	✓
Chusovoy (Perm Territory)	13	✓
Dagomys (Krasnodar Territory)	11	
Dankov (Lipetsk Region)	2	✓
Davlekanovo (Republic of Bashkortostan)	12	✓
Davydkovo (Naro-Fominsky distr., Moscow Region)	1	
Davydovo (Podolskiy distr., Moscow Region)	1	

Location	Rating Zone	Remote Area
Dedovsk (Moscow Region)	1	
Demyanovo (Klin distr., Moscow Region)	1	
Desna (Leninskiy distr., Moscow Region)	1	
Desnogorsk (Smolensk Region)	2	✓
Devyatskoe (Podolskiy distr., Moscow Region)	1	
Dimitrovgrad (Ulyanovsk Region)	9	✓
Divnogorsk (Krasnoyarsk Territory)	16	
Dmitrov (Moscow Region)	1	
Dmitrovka (Moscow)	1	✓
Dolgoprudniy (Moscow Region)	1	
Domodedovo (Moscow Region)	1	
Donetsk (Rostov-on-Don Region)	8	
Donskoy (Tula Region)	2	✓
Donskoy (Rostov-on-Don Region)	8	
Dubna (Moscow Region)	1	
Dubrovka (Moscow Region)	1	
Dudkino (Leninskiy distr., Moscow Region)	1	
Dyatkov (Bryansk Region)	2	✓
Dyurtyuli (Republic of Bashkortostan)	12	✓
Dzerzhinsk (Irkutsk Region)	17	
Dzerzhinsk (Nizhniy Novgorod Region)	4	
Dzerzhinskiy (Moscow Region)	1	
Efremov (Tula Region)	2	✓
Egoryevsk (Moscow Region)	1	
Ekaterinburg (Sverdlovsk Region)	13	
Elabuga (Republic of Tatarstan)	4	
Elektrogorsk (Moscow Region)	1	✓
Elektrostal (Moscow Region)	1	
Elektrougli (Moscow Region)	1	
Elets (Lipetskaya Region)	2	✓
Elista (Republic of Kalmykia)	8	✓
Elizarovo (Naro-Fominsky distr., Moscow Region)	1	
Emelyanovo (Krasnoyarsk Territory)	16	
Emelyanovo (Vologda Region)	2	
Enem (Krasnodar Territory)	8	
Engels (Saratov Region)	9	
Eniseysk (Krasnoyarsk Territory)	16	✓
Ermolino (Kaluga Region)	2	
Essentuki (Stavropol Territory)	11	
Evseevo (Leninskiy distr., Moscow Region)	1	
Eysk (Krasnodar Territory)	8	
Filimonki (Leninskiy distr., Moscow Region)	1	
Filino (Podolskiy distr., Moscow Region)	1	
Fokino (Primorye Territory)	18	
Fokino (Bryansk Region)	2	✓
Fominskoe (Naro-Fominsky distr., Moscow Region)	1	
Frolovo (Volgograd Region)	9	✓

* Service capability includes large settlements only. For more information please contact your nearest DHL Express office.
✓ For remote area locations an additional tariff is applied.

ZONES AND RATES

Connecting Your World
Sustainability
Service Offering
How to Ship with DHL Express
Digitalization
► Zones and Rates

Calculate the Price of Your Shipment	Optional Services	Surcharges	Customs Services	Service Capability and Rating Zones	Export Services
--------------------------------------	-------------------	------------	------------------	-------------------------------------	-----------------

RATING ZONES*

Location	Rating Zone	Remote Area
Fryazino (Moscow Region)	1	
Gagarin (Smolensk Region)	2	✓
Gatchina (Leningrad Region)	3	
Gavrilov-Yam (Yaroslavl Region)	2	✓
Gay (Orenburg Region)	12	✓
Gazoprovod (Moscow Region)	1	
Gelendzhik (Krasnodar Territory)	8	
Georgievsk (Stavropol Territory)	11	✓
Glazov (Udmurtian Republic)	4	✓
Glazunovka (Orel Region)	2	✓
Golenishchevo (Leninskiy distr., Moscow Region)	1	
Golitsyno (Moscow Region)	1	✓
Golokhvastovo (Naro-Fominsky distr., Moscow Region)	1	✓
Golokhvastovo (Moscow)	1	✓
Goluboy Zaliv (Novosibirsk Region)	15	
Gorchakovo (Moscow)	1	
Gorelovo (St. Petersburg)	3	
Gorno-Altaysk (Republic of Altai)	15	✓
Gorodets (Nizhny Novgorod Region)	4	
Gorodishche (Leninskiy distr., Moscow Region)	1	
Gorodishche (Tver Region)	2	✓
Gorodishche (Voskresenskiy distr., Moscow Region)	1	
Gorohovets (Vladimir Region)	4	✓
Gorskaya (St. Petersburg)	3	
Goryachiy Klyuch (Krasnodar Territory)	8	✓
GOSNIIGA (Moscow Region)	1	
Govorovo (Moscow Region)	1	
Grayvoron (Belgorod Region)	2	✓
Grozniy (Chechen Republic)	11	
Gryazi (Lipetsk Region)	2	✓
Gryazovets (Vologda Region)	2	✓
Gubakha (Perm Territory)	13	✓
Gubkin (Belgorod Region)	2	✓
Gubkino (Leninskiy distr., Moscow Region)	1	
Gubkinskiy (Yamal-Nenets Autonomous Area)	14	✓
Gubtsevo (Moscow Region)	1	
Gudermes (Chechen Republic)	11	
Gukovo (Rostov-on-Don Region)	8	✓
Gulkevichi (Krasnodar Territory)	8	
Gus-Khrustalnyi (Vladimir Region)	2	✓
Ilanskiy (Krasnoyarsk Territory)	16	✓
Ilskiy (Krasnodar Territory)	8	
Ilyichevka (Moscow)	1	
Ilyino (Moscow)	1	✓
Inta (Komi Republic)	10	✓
Inza (Ulyanovsk Region)	9	✓
Irbit (Sverdlovsk Region)	13	✓

Location	Rating Zone	Remote Area
Irkutsk (Irkutsk Region)	17	
Isakovo (Moscow)	1	✓
Ishimbay (Republic of Bashkortostan)	12	
Iskitim (Novosibirsk Region)	15	
Istra (Moscow Region)	1	
Ivangorod (Leningrad Region)	5	✓
Ivankovo (Podolsky distr., Moscow Region)	1	
Ivanovo (Ivanovo Region)	2	
Ivanovskoe (Naro-Fominsky distr., Moscow Region)	1	
Ivanteevka (Moscow Region)	1	
Izhevsk (Udmurtian Republic)	4	
Izluchinsk (Khanty-Mansi Autonomous Area – Yugra)	14	
Izobilnyy (Stavropol Territory)	11	✓
Izvarino (Moscow Region)	1	
Izvarinskoy shkoly (Moscow Region)	1	
Kachkanar (Sverdlovsk Region)	13	✓
Kadnikov (Vologda Region)	2	✓
Kalashnikovo (Tver Region)	2	✓
Kaluga (Kaluga Region)	2	
Kamenka (Leningrad Region)	3	
Kamenka (Leninskiy distr., Moscow Region)	1	
Kamenka (Moscow)	1	✓
Kamenka (Naro-Fominsky distr., Moscow Region)	1	
Kamenka (Orel Region)	2	
Kamenka (Volkhovskiy distr., Leningrad Region)	3	✓
Kamennogorsk (Leningrad Region)	5	✓
Kamensk-Shakhtinskiy (Rostov-on-Don Region)	8	
Kamensk-Uralskiy (Sverdlovsk Region)	13	
Kameshkovo (Vladimir Region)	2	✓
Kamyshin (Volgograd Region)	9	✓
Kamyshlov (Sverdlovsk Region)	13	✓
Kanash (Chuvash Republic)	4	✓
Kansk (Krasnoyarsk Territory)	16	✓
Karabanovo (Noginskiy distr., Moscow Region)	1	✓
Karabulak (Republic of Ingushetia)	11	✓
Karachev (Bryansk Region)	2	✓
Karakashevo (Leninskiy distr., Moscow Region)	1	
Karpinsk (Sverdlovsk Region)	13	✓
Kartmazovo (Leninsky distr., Moscow Region)	1	
Kashira (Moscow Region)	1	✓
Kasimov (Ryazan Region)	2	✓
Kasli (Chelyabinsk Region)	13	
Kaspiysk (Republic of Daghestan)	11	
Kazan (Republic of Tatarstan)	4	
Kemerovo (Kemerovo Region)	16	
Khabarovsk (Khabarovsk Territory)	18	
Khadyzhensk (Krasnodar Territory)	8	✓

* Service capability includes large settlements only. For more information please contact your nearest DHL Express office.
✓ For remote area locations an additional tariff is applied.

ZONES AND RATES

Connecting Your World
Sustainability
Service Offering
How to Ship with DHL Express
Digitalization
► Zones and Rates

Calculate the Price of Your Shipment	Optional Services	Surcharges	Customs Services	Service Capability and Rating Zones	Export Services
--------------------------------------	-------------------	------------	------------------	-------------------------------------	-----------------

RATING ZONES*

Location	Rating Zone	Remote Area
Khanty-Mansiysk (Khanty-Mansi Autonomous Area – Yugra)	14	
Kharyino (Leninskiy distr., Moscow Region)	1	
Khatminki (Naro-Fominsky distr., Moscow Region)	1	
Khimki (Moscow Region)	1	
Khomutovo (Balashikhinsky distr., Moscow Region)	1	
Khomutovo (Stupinskiy distr., Moscow Region)	1	✓
Khotkovo (Moscow Region)	1	✓
Khotynets (Orel Region)	2	✓
Kinel (Samara Region)	7	
Kineshma (Ivanovo Region)	2	✓
Kingisepp (Leningrad Region)	5	✓
Kirillov (Vologda Region)	2	✓
Kirishi (Leningrad Region)	3	✓
Kirov (Kirov Region)	4	
Kirov (Kaluga Region)	2	✓
Kirovgrad (Sverdlovsk Region)	13	✓
Kirovo-Chepetsk (Kirov Region)	4	
Kirovsk (Murmansk Region)	10	✓
Kirovsk (Kirovsk distr., Leningrad Region)	3	✓
Kirpichnogo Zavoda (Klin distr., Moscow Region)	1	✓
Kirpichnogo Zavoda (Naro-Fominsky distr., Moscow Region)	1	
Kirpichnyy (Sverdlovsk Region)	13	
Kiselevka (Leninskiy distr., Moscow Region)	1	
Kislovodsk (Stavropol Territory)	11	
Klimovka (Moscow)	1	✓
Klimovsk (Moscow Region)	1	
Klin (Moscow Region)	1	
Klintsy (Bryansk Region)	2	✓
Klokov (Moscow)	1	
Knutovo (Leninskiy distr., Moscow Region)	1	
Kogalym (Khanty-Mansi Autonomous Area – Yugra)	14	✓
Kokhma (Ivanovo Region)	2	
Kola (Murmansk Region)	10	
Kolchugino (Vladimir Region)	2	✓
Kolomna (Moscow Region)	1	
Kolotilovo (Podolskiy distr., Moscow Region)	1	✓
Kolpino (St. Petersburg)	3	
Kommunar (Leningrad Region)	3	
Kommunarka (Moscow Region)	1	
Komsomolskiy (Republic of Mordovia)	4	✓
Komsomolsk-na-Amure (Khabarovsk Territory)	18	
Konakovo (Tver Region)	2	✓
Konakovo (Moscow)	1	✓
Koncheevo (Leninskiy distr., Moscow Region)	1	
Kondopoga (Republic of Karelia)	5	✓
Kondrovo (Kaluga Region)	2	
Konyushkovo (Naro-Fominsky distr., Moscow Region)	1	

Location	Rating Zone	Remote Area
Kopeysk (Chelyabinsk Region)	13	
Korenevo (Lyuberetsky distr., Moscow Region)	1	
Korenovsk (Krasnodar Territory)	8	✓
Korkino (Chelyabinsk Region)	13	
Korocho (Belgorod Region)	2	✓
Korolev (Moscow Region)	1	
Koryazhma (Arhangelsk Region)	10	✓
Kosino (Moscow)	1	
Kosino-Ukhtomskiy (Moscow Region)	1	
Kostishovo (Podolsky distr., Moscow Region)	1	
Kostomuksha (Republic of Karelia)	5	✓
Kostroma (Kostroma Region)	2	
Kotelniki (Moscow Region)	1	
Kotelnikovo (Gatchina distr., Leningrad Region)	3	
Kotlas (Arkhangelsk Region)	10	✓
Kotovsk (Tambov Region)	2	
Kovdor (Murmansk Region)	10	✓
Kovrov (Vladimir Region)	2	✓
Kozelsk (Kaluga Region)	2	✓
Kozhukhovo (Moscow)	1	
Kozlovka (Chuvash Republic)	4	✓
Kozlovo (Kaluga Region)	2	
Kozmodemyansk (Republic of Mari El)	4	✓
Krasnaya Gora (Tver Region)	2	
Krasnaya Pakhra (Podolskiy distr., Moscow Region)	1	✓
Krasnaya Polyana (Krasnodar Territory)	11	✓
Krasnaya Volya (Krasnodar Territory)	11	✓
Krasnoarmeysk (Moscow Region)	1	✓
Krasnoarmeyskiy (Krasnodar Territory)	8	
Krasnodar (Krasnodar Territory)	8	
Krasnoe (Podolsky distr., Moscow Region)	1	✓
Krasnoe Selo (St. Petersburg)	3	
Krasnogorsk (Moscow Region)	1	
Krasnokamsk (Perm Territory)	13	
Krasnoselskiy (Krasnodar Territory)	8	
Krasnoturinsk (Sverdlovsk Region)	13	✓
Krasnoufimsk (Sverdlovsk Region)	13	✓
Krasnouralsk (Sverdlovsk Region)	13	✓
Krasnoyarsk (Krasnoyarsk Territory)	16	
Krasnozavodsk (Moscow Region)	1	✓
Krasnoznamenensk (Moscow Region)	1	✓
Krasny Sulin (Rostov-on-Don Region)	8	
Krasnye Gorki (Naro-Fominsky distr., Moscow Region)	1	
Krasnyy (Krasnodar Territory)	8	
Krasnyy Bor (Ulyanovsk Region)	9	✓
Krekshino (Naro-Fominsky distr., Moscow Region)	1	
Kremenki (Ulyanovsk Region)	9	✓

* Service capability includes large settlements only. For more information please contact your nearest DHL Express office.
✓ For remote area locations an additional tariff is applied.

ZONES AND RATES

Connecting Your World
Sustainability
Service Offering
How to Ship with DHL Express
Digitalization
► Zones and Rates

Calculate the Price of Your Shipment	Optional Services	Surcharges	Customs Services	Service Capability and Rating Zones	Export Services
--------------------------------------	-------------------	------------	------------------	-------------------------------------	-----------------

RATING ZONES*

Location	Rating Zone	Remote Area
Kresty (Moscow)	1	✓
Krivosheino (Naro-Fominsky distr., Moscow Region)	1	
Kromy (Orel Region)	2	✓
Kronshtadt (St. Petersburg)	3	
Kropotkin (Krasnodar Territory)	8	
Krutaya Gora (Orel Region)	2	
Krymsk (Krasnodar Territory)	8	
Kryukovo (Zelenograd, Moscow)	1	
Kstovo (Nizhniy Novgorod Region)	4	
Kubinka (Odintsovo distr., Moscow Region)	1	✓
Kukshevo (Naro-Fominsky distr., Moscow Region)	1	
Kulebaki (Nizhniy Novgorod Region)	4	✓
Kumertau (Republic of Bashkortostan)	12	✓
Kungur (Perm Territory)	13	✓
Kurchatov (Kursk Region)	2	✓
Kurgan (Kurgan Region)	14	
Kurganinsk (Krasnodar Territory)	8	✓
Kurkino (Moscow)	1	
Kurovskoe (Moscow Region)	1	✓
Kursk (Kursk Region)	2	
Kushva (Sverdlovsk Region)	13	✓
Kutuzovo (Zelenograd, Moscow)	1	
Kuvekino (Leninskiy distr., Moscow Region)	1	
Kuvshino (Vologda Region)	2	
Kuznetsk (Penza Region)	4	✓
Kyshtym (Chelyabinsk Region)	13	
Kyzyl (Republic of Tuva)	16	✓
Labinsk (Krasnodar Territory)	8	✓
Lakhta (St. Petersburg)	3	
Lakinsk (Vladimir Region)	2	
Langepas (Khanty-Mansi Autonomous Area – Yugra)	14	✓
Lapshinka (Leninsky distr., Moscow Region)	1	
Laptevo (Leninskiy distr., Moscow Region)	1	
Larevo (Leninskiy distr., Moscow Region)	1	
Lebedyan (Lipetsk Region)	2	✓
Lebyazhe (Ulyanovsk Region)	9	✓
Leninogorsk (Republic of Tatarstan)	4	
Leninsk-Kuznetskiy (Kemerovo Region)	16	✓
Leninskoe (Novosibirsk Region)	15	
Lermontov (Stavropol Territory)	11	
Lesosibirsk (Krasnoyarsk Territory)	16	✓
Letovo (Leninsky distr., Moscow Region)	1	
Levashovo (St. Petersburg)	3	
Lgov (Kursk Region)	2	✓
Likino-Dulevo (Moscow Region)	1	✓
Likova (Leninskiy distr., Moscow Region)	1	
Lipetsk (Lipetsk Region)	2	

Location	Rating Zone	Remote Area
Lipki (Ulyanovsk Region)	9	
Lipki (Orel Region)	2	
Lisiy Nos (St. Petersburg)	3	
Liski (Voronezh Region)	2	✓
Livadiya (Primorye Territory)	18	
Lobnya (Moscow Region)	1	
Lomonosov (St. Petersburg)	3	
Lopatino (Moscow)	1	✓
Losino-Petrovskiy (Moscow Region)	1	
Luga (Leningrad Region)	5	
Lugovoy (Balashikhinsky distr., Moscow Region)	1	
Lugovoy (Dmitrovsky distr., Moscow Region)	1	✓
Lukhovitsy (Moscow Region)	1	
Lukino (Leninskiy distr., Moscow Region)	1	
Lukino (Naro-Fominsky distr., Moscow Region)	1	✓
Luza (Kirov Region)	4	
Luzhki (Moscow)	1	✓
Luzhki (Ramensky distr., Moscow Region)	1	
Lyskovo (Nizhniy Novgorod Region)	4	✓
Lysva (Perm Territory)	13	✓
Lytkarino (Moscow Region)	1	
Lyubertsy (Moscow Region)	1	
Lyudinovo (Kaluga Region)	2	✓
Magas (Republic of Ingushetia)	11	✓
Magnitogorsk (Chelyabinsk Region)	14	
Makarovo (Noginsky distr., Moscow Region)	1	
Makhachkala (Republic of Dagestan)	11	
Maleevka (Naro-Fominsky distr., Moscow Region)	1	✓
Malgobek (Republic of Ingushetia)	11	✓
Malino (Zelenograd, Moscow)	1	
Maloarkhangelsk (Orel Region)	2	✓
Maloyaroslavets (Kaluga Region)	2	
Malygino (Podolskiy distr., Moscow Region)	1	✓
Mamadysh (Republic of Tatarstan)	4	✓
Mamonovo (Leninskiy distr., Moscow Region)	1	
Mamyri (Moscow Region)	1	
Marfino (Naro-Fominsky distr., Moscow Region)	1	
Marks (Saratov Region)	9	✓
Martyush (Sverdlovsk Region)	13	✓
Marushkino (Naro-Fominsky distr., Moscow Region)	1	
Maryino (Noginsky distr., Moscow Region)	1	
Maykop (Republic of Adygeya)	8	
Mayskiy (Kabardino-Balkariya Region)	11	✓
Mayskiy (Vologda Region)	2	
Medvedevo (Orel Region)	2	
Medvezhegorsk (Republic of Karelia)	5	✓
Medyn (Kaluga Region)	2	✓

* Service capability includes large settlements only. For more information please contact your nearest DHL Express office.
✓ For remote area locations an additional tariff is applied.

ZONES AND RATES

Connecting Your World
Sustainability
Service Offering
How to Ship with DHL Express
Digitalization
► Zones and Rates

Calculate the Price of Your Shipment	Optional Services	Surcharges	Customs Services	Service Capability and Rating Zones	Export Services
--------------------------------------	-------------------	------------	------------------	-------------------------------------	-----------------

RATING ZONES*

Location	Rating Zone	Remote Area
Region (Khanty-Mansi Autonomous Area – Yugra)	14	
Meleuz (Republic of Bashkortostan)	12	✓
Melioratorov (Vologda Region)	2	
Mendeleevsk (Republic of Tatarstan)	4	
Meshchovsk (Kaluga Region)	2	✓
Meshkovo (Leninskiy distr., Moscow Region)	1	
Metallostroy (St. Petersburg)	3	
Mezhdurechensk (Kemerovo Region)	16	✓
Miass (Chelyabinsk Region)	13	✓
Michurinsk (Tambov Region)	2	✓
Mikhaylovka (Orel Region)	2	
Mikhaylovsk (Stavropol Territory)	11	
Millerovo (Rostov-on-Don Region)	8	✓
Miloradovo (Leninskiy distr., Moscow Region)	1	
Milyukovo (Naro-Fominsky distr., Moscow Region)	1	
Mineralnye Vody (Stavropol Territory)	11	
Minusinsk (Krasnoyarsk Territory)	16	
Minvneshtorga (Leninskiy distr., Moscow Region)	1	
Mirnyi (Tikhoretsk distr., Krasnodar Territory)	8	✓
Mirnyy (Ramenskiy distr., Moscow Region)	1	✓
Mirnyy (Tver Region)	2	✓
Mitino (Moscow)	1	
Molodtsy (Podolskiy distr., Moscow Region)	1	
Monchegorsk (Murmansk Region)	10	✓
Mosalsk (Kaluga Region)	2	✓
Moscow	1	
Moskovskiy (Moscow Region)	1	
Mosrentgen (Moscow Region)	1	
Mostovskoe (Podolskiy distr., Moscow Region)	1	
Mozhaysk (Moscow Region)	1	✓
Mozhga (Udmurtian Republic)	4	✓
Mtsensk (Orel Region)	2	✓
Muravlenko (Yamal-Nenets Autonomous Area)	14	✓
Murmansk (Murmansk Region)	10	
Murmashi (Murmansk Region)	10	
Murom (Vladimir Region)	4	✓
Murygino (Smolensk Region)	2	✓
Myski (Kemerovo Region)	16	✓
Mytishi (Moscow Region)	1	
Naberezhnye Chelny (Republic of Tatarstan)	4	
Nadym (Yamal-Nenets Autonomous Area)	14	✓
Nagorniy (Yaroslavl Region)	2	
Nakhodka (Primorye Territory)	18	
Nalchik (Kabardino-Balkarian Republic)	11	✓
Naro-Fominsk (Moscow Region)	1	
Naryshkino (Orel Region)	2	
Nastasyino (Naro-Fominsky distr., Moscow Region)	1	

Location	Rating Zone	Remote Area
Navashino (Nizhniy Novgorod Region)	4	✓
Nazarovo (Krasnoyarsk Territory)	16	✓
Nazaryevo (Moscow)	1	
Nazran (Republic of Ingushetia)	11	✓
Neftegorsk (Samara Region)	7	✓
Neftekamsk (Republic of Bashkortostan)	12	✓
Neftekumsk (Stavropol Territory)	11	✓
Nefteyugansk (Khanty-Mansi Autonomous Area – Yugra)	14	✓
Nekrasovka (Moscow)	1	
Nerekhta (Kostroma Region)	2	✓
Nevyansk (Sverdlovsk Region)	13	✓
Nikolaevka (Voronezh Region)	2	✓
Nikolo-Khovanskoe (Leninskiy distr., Moscow Region)	1	
Nikolskoe (Voronezh Region)	2	✓
Nikolskoe (Gatchina distr., Leningrad Region)	3	
Nikolskoe (Tosno distr., Leningrad Region)	3	
Nikolskoe (Leninskiy distr., Moscow Region)	1	
Nikolskoe (Podolskiy distr., Moscow Region)	1	
Nikonovo (Podolskiy distr., Moscow Region)	1	
Nikulskoe (Podolskiy distr., Moscow Region)	1	
Nizhnee Valuevo (Leninskiy distr., Moscow Region)	1	
Nizhnekamsk (Republic of Tatarstan)	4	
Nizhnevartovsk (Khanty-Mansi Autonomous Area – Yugra)	14	
Nizhniy Novgorod (Nizhniy Novgorod Region)	4	
Nizhniy Tagil (Sverdlovsk Region)	13	
Nizhnaya Salda (Sverdlovsk Region)	13	
Nizhnaya Tura (Sverdlovsk Region)	13	✓
Noginsk (Moscow Region)	1	
Novaya Ladoga (Leningrad Region)	3	✓
Novaya Lyalya (Sverdlovsk Region)	13	✓
Novinki (Leninskiy distr., Moscow Region)	1	
Novoaltaysk (Altai Territory)	15	
Novobutakovo (Moscow)	1	
Novocheboksarsk (Chuvash Republic)	4	
Novocherkassk (Rostov-on-Don Region)	8	
Novodvinsk (Arkhangelsk Region)	10	
Novokosino (Moscow)	1	
Novokubansk (Krasnodar Territory)	8	
Novokuybyshevsk (Samara Region)	7	
Novokuznetsk (Kemerovo Region)	16	
Novomalino (Moscow)	1	
Novomikhaylovskiy (Krasnodar Territory)	8	✓
Novomoskovsk (Tula Region)	2	✓
Novoperedelkino (Moscow)	1	
Novorossiysk (Krasnodar Territory)	8	
Novoselki (Podolskiy distr., Moscow Region)	1	✓
Novoshakhtinsk (Rostov-on-Don Region)	8	✓

* Service capability includes large settlements only. For more information please contact your nearest DHL Express office.
✓ For remote area locations an additional tariff is applied.

ZONES AND RATES

Connecting Your World
Sustainability
Service Offering
How to Ship with DHL Express
Digitalization
► Zones and Rates

Calculate the Price of Your Shipment	Optional Services	Surcharges	Customs Services	Service Capability and Rating Zones	Export Services
--------------------------------------	-------------------	------------	------------------	-------------------------------------	-----------------

RATING ZONES*

Location	Rating Zone	Remote Area
Novosibirsk (Novosibirsk Region)	15	
Novosil (Orel Region)	2	✓
Novotroitsk (Orenburg Region)	12	
Novoulyanovsk (Ulyanovsk Region)	9	
Novouralsk (Sverdlovsk Region)	13	✓
Novovoronezh (Voronezh Region)	2	✓
Novozavidovskiy (Tver Region)	2	✓
Noviy (Egoryevsk distr., Moscow Region)	1	
Noviy (Krasnogorsk distr., Moscow Region)	1	
Noviy Urengoy (Yamal-Nenets Autonomous Area)	14	
Novyy (Krasnodar Reg)	8	
Novyy Gorodok (Odintsovsky distr., Moscow Region)	1	✓
Novyy Gorodok (Shchelkovsky distr., Moscow Region)	1	
Novyy Oskol (Belgorod Region)	2	✓
Noyabrsk (Yamal-Nenets Autonomous Area)	14	
Nyagan (Khanty-Mansi Autonomous Area – Yugra)	14	✓
Ob (Novosibirsk Region)	15	
Obninsk (Kaluga Region)	2	
Odintsovo (Odintsovo distr., Moscow Region)	1	
Odintsovo (Domodedovsky distr., Moscow Region)	1	
Oktyabrsk (Samara Region)	7	
Oktyabrskiy (Republic of Bashkortostan)	12	✓
Oktyabrskiy (Istrinsky distr., Moscow Region)	1	✓
Oktyabrskiy (Odintsovo distr., Moscow Region)	1	✓
Oktyabrskiy (Orel Region)	2	
Oktyabrskoe (Ulyanovsk Region)	9	✓
Oktyabrskiy (Lyubertsy distr., Moscow Region)	1	
Oktyabrskiy (Krasnodar Territory)	8	
Olenegorsk (Murmansk Region)	10	✓
Olgino (St. Petersburg)	3	
Olonets (Republic of Karelia)	5	✓
Omsk (Omsk Region)	15	
Onega (Arkhangelsk Region)	10	✓
Onokhoy (Republic of Buryatia)	17	
Orehovo-Zuevo (Moscow Region)	1	
Orel (Orel Region)	2	
Orenburg (Orenburg Region)	12	
Orlovskiy (Rostov-on-Don Region)	8	✓
Orsk (Orenburg Region)	12	
Osinki (Solnechnogorsky distr., Moscow Region)	1	✓
Osinniki (Kemerovo Region)	16	
Ostafyev (Podolsky distr., Moscow Region)	1	
Ostrogozhsk (Voronezh Region)	2	✓
Ostrov (Leninsky distr., Moscow Region)	1	
Otradnoe (Bryansk Region)	2	
Otradnoe (Kirovsk distr., Leningrad Region)	3	
Otradnoe (Krasnogorsky distr., Moscow Region)	1	

Location	Rating Zone	Remote Area
Otradnoe (Voronezh Region)	2	
Otradniy (Samara Region)	7	
Ozernyy (Naro-Fominsky distr., Moscow Region)	1	
Ozersk (Chelyabinsk Region)	13	
Oznobishino (Podolsky distr., Moscow Region)	1	
Pargolovo (St. Petersburg)	3	
Partizansk (Primorsky Region)	18	✓
Pavlovo (Nizhniy Novgorod Region)	4	
Pavlovsk (St. Petersburg)	3	
Pavlovsk (Voronezh Region)	2	✓
Pavlovskiy (Temryuk distr., Krasnodar Territory)	8	✓
Pavlovskiy Posad (Moscow Region)	1	✓
Pechora (Komi Republic)	10	✓
Pechory (Pskov Region)	5	✓
Penino (Leninsky distr., Moscow Region)	1	
Penza (Penza Region)	4	
Pereslavl-Zalesskiy (Yaroslavl Region)	2	✓
Peresvet (Moscow Region)	1	✓
Perm (Perm Territory)	13	
Pervomayka (Ramensky distr., Moscow Region)	1	
Pervomayskiy (Istrinsky distr., Moscow Region)	1	✓
Pervomayskiy (Mineralovodskiy distr., Stavropol Territory)	11	
Pervomayskiy (Tula Region)	2	
Pervomayskoe (Naro-Fominsky distr., Moscow Region)	1	
Pervouralsk (Sverdlovsk Region)	13	
Pesochniy (St. Petersburg)	3	
Pesye (Podolsky distr., Moscow Region)	1	
Peterhof (St. Petersburg)	3	
Petroslavyanka (St. Petersburg)	3	
Petrozavodsk (Republic of Karelia)	5	
Petushki (Vladimir Region)	2	✓
Pionerskiy (Istrinsky distr., Moscow Region)	1	✓
Pionerskiy (Vologda Region)	2	✓
Piskovo (Leninsky distr., Moscow Region)	1	
Pitkyaranta (Republic of Karelia)	5	✓
Pochinki (Podolsky distr., Moscow Region)	1	
Pochinok (Vologda Region)	2	
Podolsk (Moscow Region)	1	
Podosinki (Podolskiy distr., Moscow Region)	1	✓
Pogar (Bryansk Region)	2	✓
Pokhvistnevo (Samara Region)	7	✓
Pokrov (Klin distr., Moscow Region)	1	✓
Pokrov (Moscow Region)	1	
Pokrovskoe (Odintsovsky distr., Moscow Region)	1	✓
Pokrovskoe (Vologda Region)	2	✓
Polevskoy (Sverdlovsk Region)	13	
Polyany (Podolskiy distr., Moscow Region)	1	✓

* Service capability includes large settlements only. For more information please contact your nearest DHL Express office.
✓ For remote area locations an additional tariff is applied.

ZONES AND RATES

Connecting Your World
Sustainability
Service Offering
How to Ship with DHL Express
Digitalization
► Zones and Rates

Calculate the Price of Your Shipment	Optional Services	Surcharges	Customs Services	Service Capability and Rating Zones	Export Services
--------------------------------------	-------------------	------------	------------------	-------------------------------------	-----------------

RATING ZONES*

Location	Rating Zone	Remote Area
Pontonniy (St. Petersburg)	3	
Popovka (Moscow)	1	
Postnikovo (Naro-Fominsky distr., Moscow Region)	1	
Povorino (Voronezh Region)	2	✓
Primorsk (Leningrad Region)	5	✓
Primorskiy (Temryuk distr., Krasnodar Territory)	8	
Privolzhsk (Ivanovo Region)	2	✓
Progress (Temryuk distr., Krasnodar Territory)	8	
Prokhladny (Kabardino-Balkarian Republic)	11	✓
Prokhorovka (Belgorod Region)	2	✓
Prokopyevsk (Kemerovo Region)	16	
Prokshino (Leninsky distr., Moscow Region)	1	
Proletarsk (Rostov-on-Don Region)	8	✓
Protvino (Moscow Region)	1	✓
Pskov (Pskov Region)	5	
Ptichnoe (Naro-Fominsky distr., Moscow Region)	1	
Puchkovo (Naro-Fominsky distr., Moscow Region)	1	
Pugachev (Saratov Region)	9	✓
Pushchino (Serpukhovskoy distr., Moscow Region)	1	
Pushkin (St. Petersburg)	3	
Pushkino (Moscow Region)	1	
Pushkino (Ramenskiy distr., Moscow Region)	1	✓
Pyatigorsk (Stavropol Territory)	11	
Pyatovskoe (Naro-Fominsky distr., Moscow Region)	1	
Pykhchevo (Leninskiy distr., Moscow Region)	1	
Pykhtino (Leninskiy distr., Moscow Region)	1	
Pyt-Yakh (Khanty-Mansi Autonomous Area – Yugra)	14	✓
Radchenko (Tver Region)	2	
Radiotsentr (Leninsky distr., Moscow Region)	1	
Raduzhniy (Khanty-Mansi Autonomous Area – Yugra)	14	✓
Raduzhniy (Vladimir Region)	2	
Raevo (Podolskiy distr., Moscow Region)	1	✓
Ramenskoe (Moscow Region)	1	
Rasskazovka (Leninskiy distr., Moscow Region)	1	
Rasskazovo (Tambov Region)	2	
Rastoropovo (Leninskiy distr., Moscow Region)	1	
Razdolnoe (Novosibirsk Region)	15	
Razliv (St. Petersburg)	3	
Redkino (Tver Region)	2	
Repino (St. Petersburg)	3	
Reutov (Moscow Region)	1	
Revda (Sverdlovsk Region)	13	
Rezh (Sverdlovsk Region)	13	✓
Rodniki (Ivanovo Region)	2	✓
Rogozinino (Naro-Fominsky distr., Moscow Region)	1	
Roshchinskiy (Omsk Region)	15	✓
Roslavl (Smolensk Region)	2	✓

Location	Rating Zone	Remote Area
Rostov (Yaroslavl Region)	2	✓
Rostov-on-Don (Rostov-on-Don Region)	8	
Rozhdestvenno (Moscow)	1	✓
Rozhnovo (Moscow)	1	
Rublevo (Moscow)	1	
Rubtsovsk (Altai Territory)	15	✓
Rumyantsevo (Moscow Region)	1	
Rusino (Podolskiy distr., Moscow Region)	1	
Ruzaevka (Republic of Mordovia)	4	
Ryazan (Ryazan Region)	2	
Ryazhsk (Ryazan Region)	2	✓
Rybatskoe (St. Petersburg)	3	
Rybino (Podolskiy distr., Moscow Region)	1	
Rybinsk (Yaroslavl Region)	2	✓
Rybnoe (Ryazan Region)	2	
Rybnoe (Dmitrovskiy distr., Moscow Region)	1	✓
Rzhev (Tver Region)	2	✓
Safonovo (Smolensk Region)	2	✓
Salaryevo (Moscow Region)	1	
Salavat (Republic of Bashkortostan)	12	
Salekhard (Yamal-Nenets Autonomous Area)	14	✓
Salsk (Rostov-on-Don Region)	8	✓
Samara (Samara Region)	7	
Saperniy (St. Petersburg)	3	
Saransk (Republic of Mordovia)	4	
Sarapul (Udmurtian Republic)	4	✓
Saratov (Saratov Region)	9	
Sarov (Nizhniy Novgorod Region)	4	✓
Sasovo (Ryazan Region)	2	✓
Sayanogorsk (Republic of Khakassia)	16	✓
Sebezh (Pskov Region)	5	✓
Segezha (Republic of Karelia)	5	✓
Selenginsk (Republic of Buryatia)	17	✓
Seltso (Bryansk Region)	2	✓
Semenov (Nizhny Novgorod Region)	4	✓
Semiluki (Voronezh Region)	2	
Sengiley (Ulyanovsk Region)	9	✓
Sergiev Posad (Moscow Region)	1	
Serov (Sverdlovsk Region)	13	✓
Serpukhov (Moscow Region)	1	
Sertolovo (Leningrad Region)	3	
Sestoret'sk (St. Petersburg)	3	
Severny (Belgorod Region)	2	
Severniy (Moscow)	1	
Severodvinsk (Arkhangelsk Region)	10	
Severomorsk (Murmansk Region)	10	✓
Severouralsk (Sverdlovsk Region)	13	✓

* Service capability includes large settlements only. For more information please contact your nearest DHL Express office.
✓ For remote area locations an additional tariff is applied.

ZONES AND RATES

Connecting Your World
Sustainability
Service Offering
How to Ship with DHL Express
Digitalization
► Zones and Rates

Calculate the Price of Your Shipment	Optional Services	Surcharges	Customs Services	Service Capability and Rating Zones	Export Services
--------------------------------------	-------------------	------------	------------------	-------------------------------------	-----------------

RATING ZONES*

Location	Rating Zone	Remote Area
Shablykino (Orel Region)	2	✓
Shadrinsk (Kurgan Region)	14	✓
Shakhovo (Podolsky distr., Moscow Region)	1	✓
Shakhty (Rostov-on-Don Region)	8	
Sharapovo (Naro-Fominsk distr., Moscow Region)	1	
Sharya (Kostroma Region)	2	✓
Sharypovo (Krasnoyarsk Territory)	16	✓
Shatura (Moscow Region)	1	✓
Shchapovo (Podolsky distr., Moscow Region)	1	
Schekino (Tula Region)	2	
Schelkovo (Moscow Region)	1	
Scherbinka (Moscow Region)	1	
Shchuche (Orel Region)	2	
Shebekino (Belgorod Region)	2	
Shelbutovo (Leninskiy distr., Moscow Region)	1	
Shelekhov (Irkutsk Region)	17	
Shikhany (Saratov Region)	9	✓
Shiryaev (Moscow)	1	
Shlisselburg (Leningrad Region)	3	✓
Shudayag (Komi Republic)	10	
Shumerlya (Chuvash Republic)	4	✓
Shushary (St. Petersburg)	3	
Shuya (Ivanovo Region)	2	
Sibay (Republic of Bashkortostan)	14	✓
Skopin (Ryazan Region)	2	✓
Slantsy (Leningrad Region)	5	✓
Slavnyy (Tver Region)	2	✓
Slavyansk-na-Kubani (Krasnodar Territory)	8	
Slobodskoy (Kirov Region)	4	✓
Slyudyanka (Irkutsk Region)	17	✓
Smolensk (Smolensk Region)	2	
Smyshlyaevka (Ulyanovsk Region)	9	✓
Smyshlyaevka (Samara Region)	7	
Snezhinsk (Chelyabinsk Region)	13	✓
Sobinka (Vladimir Region)	2	
Sochi (Krasnodar Territory)	11	
Sofyino (Podolsky distr., Moscow Region)	1	✓
Sokol (Vologda Region)	2	
Sokolovo (Naro-Fominsky distr., Moscow Region)	1	
Solikamsk (Perm Territory)	13	
Sol-Iletsk (Orenburg Region)	12	✓
Solnechniy (Voronezh Region)	2	
Solnechnoe (St. Petersburg)	3	
Solnechnogorsk (Moscow Region)	1	✓
Solnechnyy (Khanty-Mansi Autonomous Area – Yugra)	14	
Solntsevo (Moscow)	1	
Sorochinsk (Orenburg Region)	12	✓

Location	Rating Zone	Remote Area
Sortavala (Republic of Karelia)	5	✓
Sosenki (Moscow Region)	1	
Sosnogorsk (Komi Republic)	10	
Sosnovka (Vologda Region)	2	
Sosnoviy Bor (Leningrad Region)	5	
Sosnovy Bor (Republic of Buryatia)	17	
Sosnovyy Bor (Leninskiy distr., Moscow Region)	1	
Sovetskaya Gavan (Khabarovsk Territory)	18	
Sovetskiy (Leningrad Region)	5	
Sovetskiy (Khanty-Mansi Autonomous Area – Yugra)	14	✓
Sredneuralsk (Sverdlovsk Region)	13	
St. Petersburg	3	
Stanislavl (Leninskiy distr., Moscow Region)	1	
Staraya Kupavna (Moscow Region)	1	
Staritsa (Tver Region)	2	✓
Starodub (Bryansk Region)	2	✓
Staroselye (Leninskiy distr., Moscow Region)	1	
Starosyrovo (Podolsky distr., Moscow Region)	1	
Stariy Oskol (Belgorod Region)	2	✓
Stavropol (Stavropol Territory)	11	
Stepnoy (Krasnodar Territory)	8	
Sterlitamak (Republic of Bashkortostan)	12	
Stolbovo (Leninsky distr., Moscow Region)	1	
Stradan (Podolskiy distr., Moscow Region)	1	✓
Strezhevoy (Tomsk Region)	14	✓
Stroitel (Arkhangelsk Region)	10	
Stroitel (Tambov Region)	2	
Stroykeramika (Samara Region)	7	
Studentsy (Podolsky distr., Moscow Region)	1	
Stupino (Moscow Region)	1	
Sudogda (Vladimir Region)	2	
Sudzha (Kursk Region)	2	✓
Sukhinichi (Kaluga Region)	2	✓
Sukhodol (Samara Region)	7	✓
Sukhoy Log (Sverdlovsk Region)	13	✓
Surazh (Bryansk Region)	2	✓
Surgut (Khanty-Mansi Autonomous Area – Yugra)	14	
Surgut (Samara Reg)	7	✓
Suvorov (Tula Region)	2	✓
Suzdal (Vladimir Region)	2	
Svetlyy (Irkutsk Reg)	17	
Svetlyy (Noginsky distr., Moscow Region)	1	
Svetogorsk (Leningrad Region)	5	✓
Syktyvkar (Komi Republic)	10	
Sysert (Sverdlovsk Region)	13	✓
Syzran (Samara Region)	7	
Taganrog (Rostov-on-Don Region)	8	

* Service capability includes large settlements only. For more information please contact your nearest DHL Express office.
✓ For remote area locations an additional tariff is applied.

ZONES AND RATES

Connecting Your World
Sustainability
Service Offering
How to Ship with DHL Express
Digitalization
► Zones and Rates

Calculate the Price of Your Shipment	Optional Services	Surcharges	Customs Services	Service Capability and Rating Zones	Export Services
--------------------------------------	-------------------	------------	------------------	-------------------------------------	-----------------

RATING ZONES*

Location	Rating Zone	Remote Area
Talitsa (Sverdlovsk Region)	13	✓
Tambov (Tambov Region)	2	
Tarasovo (Podolsky distr., Moscow Region)	1	
Tarkhovka (St. Petersburg)	3	
Tarko-Sale (Yamal-Nenets Autonomous Area)	14	✓
Tayshet (Irkutsk Region)	17	✓
Temryuk (Krasnodar Territory)	8	
Terek (Kabardino-Balkarian Republic)	11	✓
Tikhoretsk (Krasnodar Territory)	8	
Tikhvin (Leningrad Region)	3	✓
Timashevsk (Krasnodar Territory)	8	
Tlyustenkhabl (Krasnodar Territory)	8	
Tobolsk (Tyumen Region)	13	✓
Togliatti (Samara Region)	7	
Tolmachevo (Novosibirsk Region)	15	
Tomsk (Tomsk Region)	15	
Torzhok (Tver Region)	2	✓
Tosno (Leningrad Region)	3	
Troitsk (Moscow Region)	1	
Troitsk (Chelyabinsk Region)	13	✓
Troitskoe (Podolsky distr., Moscow Region)	1	
Trubchevsk (Bryansk Region)	2	✓
Tsem dolina (Krasnodar Territory)	8	
Tuapse (Krasnodar Territory)	8	
Tula (Tula Region)	2	
Tupikovo (Leninskiy distr., Moscow Region)	1	
Tutaev (Yaroslavl Region)	2	
Tuymazy (Republic of Bashkortostan)	12	✓
Tver (Tver Region)	2	
Tyarlevo (St. Petersburg)	3	
Tynda (Amur Region)	19	✓
Tyumen (Tyumen Region)	13	
Udomlya (Tver Region)	2	✓
Ufa (Republic of Bashkortostan)	12	
Ugleurskiy (Perm Territory)	13	✓
Uglich (Yaroslavl Region)	2	✓
Ukhta (Komi Republic)	10	
Ulan-Ude (Republic of Buryatia)	17	
Ulyanovsk (Ulyanovsk Region)	9	
Ulyanovskogo Lesoparka (Leninsky distr., Moscow Region)	1	
Uray (Khanty-Mansi Autonomous Area – Yugra)	14	✓
Ushkovo (St. Petersburg)	3	
Usinsk (Komi Republic)	10	
Usman (Lipetsk Region)	2	✓
Usolye (Perm Territory)	13	
Usolye-Sibirskoe (Irkutsk Region)	17	✓
Ussuriysk (Primorye Territory)	18	

Location	Rating Zone	Remote Area
Ust-Ilimsk (Irkutsk Region)	17	✓
Ust-Izhora (St. Petersburg)	3	
Ust-Kinelskiy (Samara Region)	7	
Ust-Kut (Irkutsk Region)	17	✓
Ust-Labinsk (Krasnodar Territory)	8	✓
Utkina Zavod (St. Petersburg)	3	
Uvarovo (Domodedovsky distr., Moscow Region)	1	✓
Uzhur (Krasnoyarsk Territory)	16	✓
Uzlovaya (Tula Region)	2	✓
Vakhrushi (Kirov Region)	4	
Valuevo (Leninskiy distr., Moscow Region)	1	
Valuyki (Belgorod Region)	2	✓
Vanino (Khabarovsk Territory)	18	
Varvarino (Podolskiy distr., Moscow Region)	1	✓
Vatutinki (Leninskiy distr., Moscow Region)	1	
Velikie Luki (Pskov Region)	5	✓
Velikiy Novgorod (Novgorod Region)	5	
Velikiy Ustyug (Vologda Region)	10	✓
Velsk (Vologda Region)	2	✓
Vereshchagino (Perm Territory)	13	✓
Vereya (Ramenskiy distr., Moscow Region)	1	
Verkhnyaya Dubrovinka (Smolensk Region)	2	
Verkhnee Valuevo (Leninskiy distr., Moscow Region)	1	
Verkhniy Tagil (Sverdlovsk Region)	13	✓
Verkhnyaya Pyshma (Sverdlovsk Region)	13	
Verkhnyaya Salda (Sverdlovsk Region)	13	
Verkhovye (Moscow)	1	
Veseloe (Krasnodar Territory)	11	✓
Vichuga (Ivanovo Region)	2	✓
Vidnoe (Moscow Region)	1	
Vikhorevka (Irkutsk Region)	17	✓
Vishenki (Smolensk Region)	2	
Vladikavkaz (Republic of North Ossetia – Alania)	11	
Vladimir (Vladimir Region)	2	
Vladivostok (Primorye Territory)	18	
Vlasovo (Naro-Fominsky distr., Moscow Region)	1	
Vlasyevo (Leninskiy distr., Moscow Region)	1	
Vnukovo (Moscow Region)	1	
Volgodosk (Rostov-on-Don Region)	8	
Volgograd (Volgograd Region)	9	
Volgorechensk (Kostroma Region)	2	
Volkhov (Volkhovskiy distr., Leningrad Region)	3	✓
Vologda (Vologda Region)	2	
Volsk (Saratov Region)	9	✓
Volzhsk (Region Mari El)	4	✓
Volzhsk (Volgograd Region)	9	
Vorkuta (Komi Republic)	10	✓

* Service capability includes large settlements only. For more information please contact your nearest DHL Express office.
✓ For remote area locations an additional tariff is applied.

ZONES AND RATES

Connecting Your World
Sustainability
Service Offering
How to Ship with DHL Express
Digitalization
► Zones and Rates

Calculate the Price of Your Shipment	Optional Services	Surcharges	Customs Services	Service Capability and Rating Zones	Export Services
--------------------------------------	-------------------	------------	------------------	-------------------------------------	-----------------

RATING ZONES*

Location	Rating Zone	Remote Area
Voronezh (Voronezh Region)	2	
Vorsino (Podolsky distr., Moscow Region)	1	
Vorsma (Nizhny Novgorod Region)	4	
Voskhod (Istrinsky distr., Moscow Region)	1	✓
Voskhod (Novosibirsk Region)	15	
Voskresensk (Moscow Region)	1	
Vostochniy (Moscow)	1	
Vostochniy (Trans-Baikal Territory)	17	
Vostochniy (Tihoretskiy distr., Krasnodar Territory)	8	
Vostryakovo (Moscow Region)	1	
Votkinsk (Udmurtian Republic)	4	
Vsevolozhsk (Leningrad Region)	3	
Vyazma (Smolensk Region)	2	✓
Vyazniki (Stavropol Territory)	11	
Vyborg (Leningrad Region)	5	
Vykhino-Zhulebino (Moscow Region)	1	
Vyksa (Nizhniy Novgorod Region)	4	✓
Vyshniy Volochek (Tver Region)	2	✓
Vysokovsk (Moscow Region)	1	✓
Yablonovskiy (Republic of Adygeya)	8	
Yakhroma (Moscow Region)	1	✓
Yakovlevo (Leninskiy distr., Moscow Region)	1	
Yakovlevo (Podolsky distr., Moscow Region)	1	
Yalutorovsk (Tyumen Region)	13	✓
Yamontovo (Leninskiy distr., Moscow Region)	1	
Yanaul (Republic of Bashkortostan)	12	✓
Yantarniy (Aksay distr., Rostov-on-Don Region)	8	
Yantarnyy (Balashikhinsky distr., Moscow Region)	1	
Yarega (Komi Republic)	10	✓
Yaroslavl (Yaroslavl Region)	2	
Yartsevo (Moscow)	1	✓
Yasnogorsk (Tula Region)	2	✓
Yazovo (Leninskiy distr., Moscow Region)	1	
Yoshkar-Ola (Republic of Mari El)	4	
Yubileyniy (Moscow Region)	1	
Yubileyniy (Krasnodar Territory)	8	✓
Yugorsk (Khanty-Mansi Autonomous Area – Yugra)	14	✓
Yukhnov (Kaluga Region)	2	✓
Yurev-Polskiy (Vladimir Region)	2	✓
Yurevets (Vladimir Region)	2	
Yuryevo (Naro-Fominsky distr., Moscow Region)	1	✓
Yuzhnouralsk (Chelyabinsk Region)	13	✓
Zabaykalskiy (Trans-Baikal Territory)	17	✓
Zabolotye (Moscow)	1	✓
Zadonsk (Lipetsk Region)	2	✓
Zainsk (Republic of Tatarstan)	4	
Zaozerniy (Kurgan Region)	14	

Location	Rating Zone	Remote Area
Zareche (Orel Region)	2	
Zarechye (Moscow)	1	
Zarechniy (Penza Region)	4	
Zarechnyy (Sverdlovsk Region)	13	✓
Zarechye (Volkhovskiy distr., Leningrad Region)	3	✓
Zarinsk (Altai Territory)	15	✓
Zavodoukovsk (Tyumen Region)	13	✓
Zavolzhye (Nizhniy Novgorod Region)	4	
Zelenodolsk (Republic of Tatarstan)	4	✓
Zelenogorsk (Krasnoyarsk Territory)	16	✓
Zelenogorsk (St. Petersburg)	3	
Zelenograd (Moscow)	1	
Zeleniy (Tikhoretsk distr., Krasnodar Territory)	8	✓
Zelenyy Bor (Smolensk Region)	2	
Zernograd (Rostov-on-Don Region)	8	✓
Zheleznogorsk (Krasnoyarsk Territory)	16	✓
Zheleznogorsk (Kursk Region)	2	✓
Zheleznovodsk (Stavropol Territory)	11	
Zhigulevsk (Samara Region)	7	
Zhukovka (Moscow Region)	1	
Zhukovka (Bryansk Region)	2	✓
Zhukovka (Naro-Fominsky distr., Moscow Region)	1	
Zhukovka (Orel Region)	2	
Zukovskiy (Moscow Region)	1	
Zhulebino (Moscow Region)	1	
Zimenki (Leninsky distr., Moscow Region)	1	
Zlatoust (Chelyabinsk Region)	13	✓
Znamenka (Orel Region)	2	
Znamya Oktyabrya (Podolsky distr., Moscow Region)	1	
Zvenigorod (Moscow Region)	1	✓
Zverevo (Rostov-on-Don Region)	8	✓
Zverevo (Moscow)	1	✓

* Service capability includes large settlements only. For more information please contact your nearest DHL Express office.
✓ For remote area locations an additional tariff is applied.

ZONES AND RATES

[Connecting Your World](#)
[Sustainability](#)
[Service Offering](#)
[How to Ship with DHL Express](#)
[Digitalization](#)
[► Zones and Rates](#)
[Calculate the Price
of Your Shipment](#)
[Optional
Services](#)
[Surcharges](#)
[Customs
Services](#)
[Service Capability
and Rating Zones](#)
[Export
Services](#)

Service Rates*

DHL EXPRESS WORLDWIDE EXPORT

Weight ¹ in kg	Zone 1	Zone 2	Zone 3	Zone 4	Zone 5	Zone 6	Zone 7	Zone 8
Documents only up to 2 kg								
0.3*	10,450	13,530	14,880	16,260	16,580	20,290	25,600	29,230
0.5	11,460	14,490	15,800	17,380	18,560	21,610	26,720	30,710
1.0	14,750	18,230	20,210	21,930	23,400	26,680	31,910	36,670
1.5	16,980	21,030	23,570	25,390	27,550	31,270	36,820	41,990
2.0	19,210	23,830	26,930	28,850	31,700	35,860	41,730	47,310
Documents from 2.5 kg and non-documents** from 0.5 kg								
0.5	12,950	15,520	17,500	18,850	20,550	23,770	28,550	33,290
1	16,760	19,660	22,150	23,830	25,820	29,360	34,560	39,920
1.5	18,820	22,210	25,260	27,160	29,600	33,710	39,590	45,470
2	20,880	24,760	28,370	30,490	33,380	38,060	44,620	51,020
2.5	22,750	27,250	31,430	33,890	37,270	42,210	49,740	56,920
3	24,520	29,740	34,520	37,210	41,100	46,290	54,710	62,650
3.5	26,290	32,230	37,610	40,530	44,930	50,370	59,680	68,380
4	28,060	34,720	40,700	43,850	48,760	54,450	64,650	74,110
4.5	29,830	37,210	43,790	47,170	52,590	58,530	69,620	79,840
5	31,600	39,700	46,880	50,490	56,420	62,610	74,590	85,570
5.5	33,370	41,920	49,530	53,350	59,480	66,250	79,140	91,120
6	35,140	44,140	52,180	56,210	62,540	69,890	83,690	96,670
6.5	36,910	46,360	54,830	59,070	65,600	73,530	88,240	102,220
7	38,680	48,580	57,480	61,930	68,660	77,170	92,790	107,770
7.5	40,450	50,800	60,130	64,790	71,720	80,810	97,340	113,320
8	42,220	53,020	62,780	67,650	74,780	84,450	101,890	118,870
8.5	43,990	55,240	65,430	70,510	77,840	88,090	106,440	124,420
9	45,760	57,460	68,080	73,370	80,900	91,730	110,990	129,970
9.5	47,530	59,680	70,730	76,230	83,960	95,370	115,540	135,520
10	49,300	61,900	73,380	79,090	87,020	99,010	120,090	141,070
11	52,240	65,280	77,500	83,570	91,800	104,150	126,750	149,390
12	55,180	68,660	81,620	88,050	96,580	109,290	133,410	157,710
13	58,120	72,040	85,740	92,530	101,360	114,430	140,070	166,030
14	61,060	75,420	89,860	97,010	106,140	119,570	146,730	174,350
15	64,000	78,800	93,980	101,490	110,920	124,710	153,390	182,670
16	66,940	82,180	98,100	105,970	115,700	129,850	160,050	190,990
17	69,880	85,560	102,220	110,450	120,480	134,990	166,710	199,310
18	72,820	88,940	106,340	114,930	125,260	140,130	173,370	207,630
19	75,760	92,320	110,460	119,410	130,040	145,270	180,030	215,950
20	78,700	95,700	114,580	123,890	134,820	150,410	186,690	224,270
21	81,560	98,900	118,100	127,770	139,180	155,270	192,710	231,230
22	84,420	102,100	121,620	131,650	143,540	160,130	198,730	238,190
23	87,280	105,300	125,140	135,530	147,900	164,990	204,750	245,150
24	90,140	108,500	128,660	139,410	152,260	169,850	210,770	252,110
25	93,000	111,700	132,180	143,290	156,620	174,710	216,790	259,070
26	95,860	114,900	135,700	147,170	160,980	179,570	222,810	266,030
27	98,720	118,100	139,220	151,050	165,340	184,430	228,830	272,990
28	101,580	121,300	142,740	154,930	169,700	189,290	234,850	279,950
29	104,440	124,500	146,260	158,810	174,060	194,150	240,870	286,910
30	107,300	127,700	149,780	162,690	178,420	199,010	246,890	293,870
40	126,500	151,200	178,080	194,290	214,220	239,210	298,390	357,270
50	145,700	174,700	206,380	225,890	250,020	279,410	349,890	420,670
60	164,900	198,200	234,680	257,490	285,820	319,610	401,390	484,070
70	184,100	221,700	262,980	289,090	321,620	359,810	452,890	547,470
For each extra 0.5 kg								
свыше 10 кг	1,470	1,690	2,060	2,240	2,390	2,570	3,330	4,160
свыше 20 кг	1,430	1,600	1,760	1,940	2,180	2,430	3,010	3,480
For each extra 1 kg								
30.1-70	1,920	2,350	2,830	3,160	3,580	4,020	5,150	6,340
70.1-300	2,750	3,250	3,890	4,370	4,820	5,460	6,800	7,490
300.1-1000	3,030	3,600	4,320	4,850	5,320	5,960	7,420	8,420
DHL Express 12:00								
		1,650*						
DHL Express 10:30								
		2,700*						
DHL Express 09:00								
		3,400*						

¹ DHL's shipment charges are calculated according to the higher of actual or volumetric weight of each cargo place. The weight shall be rounded up to the value divisible by 0.5 kg (for weighing less 30 kg) and 1 kg (for shipments weighing more than 30 kg). For example: 2.1 kg shall be rounded up to 2.5 kg, and 31.2 kg shall be rounded up to 32 kg. Attention! The minimal chargeable weight for the delivery of documents with no commercial value at DHL EXPRESS WORLDWIDE EXPORT rates shall be 0.3 kg. For all other shipments the minimum chargeable weight is 0.5 kg.

* All rates are stated in rubles exclusive of VAT and fuel surcharge. Rates for specific weights not shown in the table above are available on request in your nearest DHL office. DHL is entitled to change its rates on its sole discretion.

** Shipments qualified as "Documents" shall mean "Express documents" with no commercial value. Shipments which are not qualifying for "Express documents" are to be "Other shipments". Please be advised that "Documents" and "Other shipments" definitions are subjects to legal requirements of the country of destination.

ZONES AND RATES

Connecting Your World
Sustainability
Service Offering
How to Ship with DHL Express
Digitalization
► Zones and Rates

Calculate the Price of Your Shipment	Optional Services	Surcharges	Customs Services	Service Capability and Rating Zones	Export Services
--------------------------------------	-------------------	------------	------------------	-------------------------------------	-----------------

RATING ZONES*

- | | |
|--|---|
| 1. Moscow, Moscow region | 11. Astrakhan Region, North Caucasian Federal District, |
| 2. Central Federal District (except Moscow and Moscow Region), Vologda Region | 12. Orenburg Region, Republic of Bashkortostan** |
| 3. Saint Petersburg | 13. Perm Territory**, Sverdlovsk, Chelyabinsk** and Tyumen Regions |
| 4. Kirov, Nizhniy Novgorod, Penza Regions, Republic of Mari El, Republic of Mordovia, Republic of Tatarstan, Udmurtian Republic and Chuvash Republic | 14. Yamal-Nenets Autonomous Area, Khanty-Mansi Autonomous Area and Kurgan Region |
| 5. Novgorod, Pskov, Leningrad** Regions, Republic of Karelia, | 15. Novosibirsk, Omsk, Tomsk** Regions, Altai Territory, Republic of Altai |
| 6. Kaliningrad region*** | 16. Krasnoyarsk Territory**, Republic of Tuva, Republic of Khakassia, Kemerovo Region |
| 7. Samara Region | 17. Irkutsk Region, Trans-Baikal Territory, Republic of Buryatia |
| 8. Krasnodar Territory**, Rostov Region, Republic of Adygeya, Republic of Kalmykia | 18. Khabarovsk Territory, Jewish Autonomous Region, Primorsky Region |
| 9. Saratov, Ulyanovsk, Volgograd Regions | 19. Amur Region |
| 10. Arkhangelsk and Murmansk Regions, Komi Republic | |

* Service capability may change during the year. For more information please contact your nearest DHL office.
** Most of the locations in mentioned regions belong to stated rating zone. Exact information is in the table "Rating zones".
*** Temporary not serviced.



Country Office:

127083 Moscow

8 Marta St., 14

Telephone: +7 (495) 956 1000, 8 (800) 7000-345

A full list of DHL Express offices in Russia
is available at express.dhl.ru

© DHL

© DHL Express

DHL® and DHL Express® are registered trademarks
of DHL International GmbH.

Valid from June 1st, 2025.

Subject to change without notice.

Approved by the Order № 1-06/01/04/2025