



SERVICE & RATE GUIDE 2025

RUSSIA

GET STARTED

[Connecting Your World](#)

[Dear Customer](#)

[Sustainability](#)

[Service Offering](#)

[How to Ship with DHL Express](#)

[Digitalization](#)

[Zones and Rates](#)

CONNECTING YOUR WORLD



220+
countries and
territories served



500+
airports served
worldwide

295+
aircraft

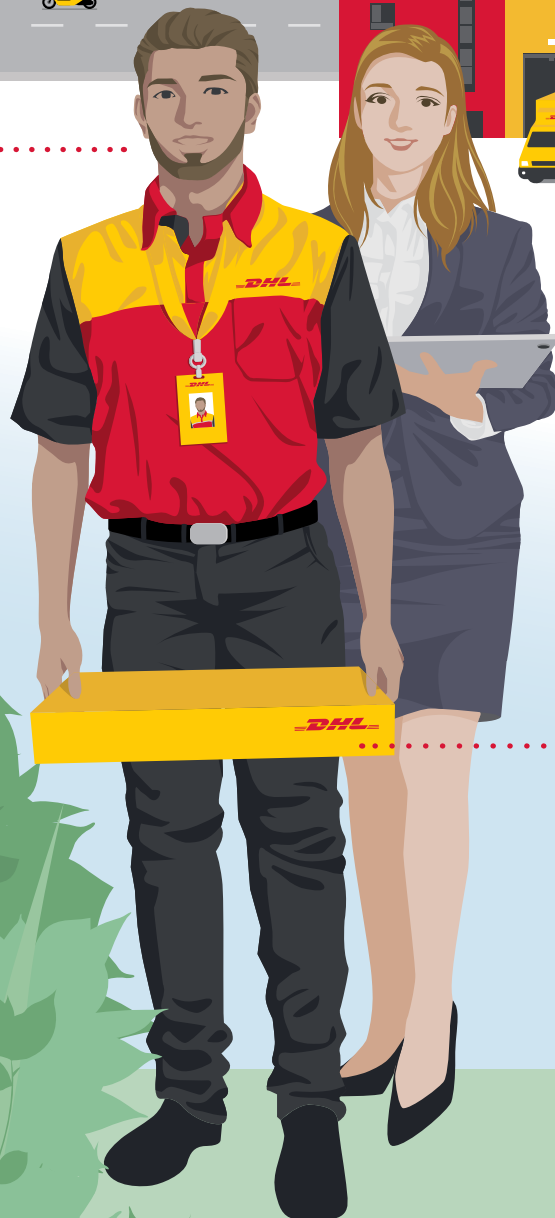
2,300+
flights per day



115,000
Service Points



116,000
employees



3,800
facilities

34,600
vehicles

288 million
Time Definite shipments
per year

 **451**
TAPA* certifications

By the year 2050,
DHL Group aims to
achieve net zero
emissions logistics

GOGREEN

Figures are global and are approximate
as of the end of 2023

*Transported Asset Protection Association

DEAR CUSTOMER

Welcome to the DHL Express Service and Rate Guide for 2025. If you are reading this, it means you have a personal or business need to move something, from somewhere, to somewhere and you want it done quickly, securely and reliably.

DHL Express is global market leader in Time Definite International (TDI) shipping and courier delivery, and the most international company in the world. We move over 1 million shipments every working day, from point A to point B in 220 countries and territories, as quickly, securely and reliably as possible. Over 3 million customers around the world put their trust in us, and our team of 116,000 Certified International Specialists strive to exceed their expectations on every single shipment.

2024 was another challenging year. The geopolitical situation in the world remains tense and continues to have a significant impact on logistics. Despite this, our company globally continues to invest heavily in the sustainability of our network. Examples of these investments include upgrading our fleet with eight new Boeing 777 freighter aircrafts, as well as significant investments in carbon-neutral facilities and digital security infrastructure.

These investments work for the future of the DHL network and ensure that we continue to improve the quality of service we deliver to our customers.

The strength of our network helps us stay the Logistics Provider of Choice. Delivering on our commitments to the customers and providing services of high quality – have always been and remain our top priorities.

Sustainability and Digitalization continue to be long-term focus areas and are integral to our corporate strategy. This year DHL Express took further steps in the journey to achieving net-zero emissions by 2050 through increasing our Sustainable Aviation Fuel (SAF) utilization and electric vehicles. With our GoGreen Plus service, you can support your own decarbonization goals – your customers are likely already making purchase decisions based on the carbon footprint of your products and services. Give them another reason to say ‘Yes’ and make a choice in your favour.

Use our digital capabilities to enhance your customers’ experience. For example, our On Demand Delivery will give you and your customers greater manoeuvrability at the last mile delivery stage.

We continue supporting Russian exporters. The global e-commerce shows steady growth, and businesses in Russia have new markets for export development. DHL Express remains a trusted partner for exporters, helping them turn local business into global. This guide will give you the information you need to know which DHL Express products, services and solutions meet your logistics needs.

Thank you for trusting us to be your logistics partner!

Sincerely,

Dmitriy Zharkov
Managing Director
DHL Express Russia



SUSTAINABILITY



OUR SUSTAINABILITY JOURNEY

Emissions

2000s First environmental report

2010s Target 2050: net-zero emissions logistics

2020s Sustainability roadmap

2030

Reduce our greenhouse gas emissions to under 29 million metric tons, in line with Science Based Target Initiative (SBTi) criteria

SAF blending of 30% for all air transport

Electrify 60% of last-mile delivery vehicles

0%

2050

Net-zero emissions



CLEAN OPERATIONS FOR CLIMATE PROTECTION



Leader in sustainable aviation

DHL Express GoGreen Plus is a dedicated

solution to help businesses reduce the carbon emissions associated with their shipments through the use of Sustainable Aviation Fuel (SAF). GoGreen Plus uses SAF to enable customers to reduce the CO₂e emissions associated with their shipments, and is currently supported by three of the industry's largest collaborations with BP, Neste and World Energy.



In contrast to 'offsetting' – where businesses 'neutralize' their emissions through environmental programs – GoGreen Plus is 'insetting'. Insetting's impact is greater because it directly reduces emissions within a company's value chain, resulting in significant reductions in scope 3 emissions. Here is how you can get on board:

- With the **GoGreen Plus Basic model**, a fixed CO₂e reduction (insetting) will be achieved on all your air express shipments.
- In **MyDHL+**, you can opt for GoGreen Plus and choose which shipments to invest in with SAF.
- Alternatively, choose a **Customized Offer** for a bespoke insetting plan.



Green last-mile and line-haul

Electrify **60%** of last-mile delivery vehicles.



Carbon neutral buildings

Design **100%** of all new buildings to be carbon neutral.



Green product portfolio

Our GoGreen Plus service allows customers shipping TDI to inset their CO₂ air emissions by up to **90%**.



GREAT COMPANY TO WORK FOR ALL

- Attract and retain the best talent
- 'Safety First' culture
- Diverse and inclusive workplace



HIGHLY TRUSTED COMPANY

- Compliance as an integral part of daily business
- Effective governance set-up across our organization
- Like-minded and compliant suppliers and partners



SERVICE OFFERING

 Connecting Your World

 Sustainability

 ► Service Offering

 How to Ship with DHL Express

 Digitalization

 Zones and Rates

**Export
Services**
**Enabling
Your Growth**
**Optional
Services**
Surcharges
**Customs
Services**

Our core services are Time Definite International (TDI) and offer you secure door-to-door delivery of goods and documents to and from virtually every country and territory. Whether you need your shipments delivered at the start, middle or end of a business day, our services offer full track-and-trace visibility so you always know where your shipments are.

EXPORT SERVICES

DHL Express Worldwide

Our most popular product, DHL Express Worldwide, offers an end of business day delivery service around the world for pieces up to 70kg and shipments up to 1,000kg.

We deliver reliably and quickly to more global destinations across a single integrated network than any other express delivery company.

DHL Express 12:00

With DHL Express 12:00 you will receive your shipments before 12 noon on the next possible business day. DHL Express 12:00

offers a money-back guarantee* and allows for pieces up to 70kg and shipments up to 300kg.

DHL Express 9:00/10:30

Our premium time-definite service offers a delivery before 9:00/10:30 on lanes that guarantee either a next or second business day delivery. DHL Express 9:00/10:30 is offered to the majority of business centers in Europe, the Middle East, Africa, Asia and the Americas. DHL Express 9:00/10:30 features a money-back guarantee* and is suitable for pieces up to 30kg and shipments up to 300kg.

International Services**

	DHL Express Worldwide	DHL Express 12:00	DHL Express 9:00/10:30
Service description	Express door-to-door international pre 18:00 hrs delivery of document and non-document shipments	Express door-to-door international pre 12:00 hrs delivery of document and non-document shipments on the next possible business day. Priority handling	Express door-to-door international pre 9:00/10:30 hrs delivery of document and non-document shipments on the next possible business day. Priority handling and proactive notification of delivery
Money-back guarantee	No	Yes***	Yes***
Countries and territories covered	More than 220****	Available to Europe, Middle East, Asia, Latin America and USA****	Available to Europe, Middle East, Asia and USA****
Maximum piece weight	70kg	70kg	30kg
Maximum pieces per shipment	—	10	10
Maximum shipment weight	1000kg	300kg	300kg
Maximum piece dimensions	120 x 80 x 80cm	120 x 80 x 80cm	120 x 80 x 80cm
Maximum pallet weight	300 kg	Pallets not accepted	Pallets not accepted
Maximum pallet dimensions (L x W x H)	120 x 120 x 160cm	Pallets not accepted	Pallets not accepted
Additional services and surcharges	Optional services available upon request. Additional surcharges may apply	Premium charge 12:00 to the DHL EXPRESS WORLDWIDE rate	Premium charge 9:00/10:30 to the DHL EXPRESS WORLDWIDE rate

* DHL aims to provide your shipments with the shortest transit time possible. All references contained in this DHL Rate and Transit Guide related to pre 9:00 hrs, pre 10:30 hrs and pre 12:00 hrs delivery services mean that DHL will make every effort for time definite delivery within the timeframes outlined and due to Money-back guarantee. For more information on the average transit time please contact DHL Express office in your city or visit [express.dhl.ru](https://www.express.dhl.ru). In the event of late delivery, we guarantee a money-back of fixed charge per Premium 9:00/10:30/12:00 including fuel surcharge.

** For more information on the availability of these services in your location please contact your nearest DHL office.

*** For all shipments transported through DHL network, standard shipment restrictions and conditions (as specified in the standard delivery terms on DHL waybill) and conditions of money-back guarantee (as published at [express.dhl.ru](https://www.express.dhl.ru)) are applicable.

**** Service capability may change during the year. For more information on the availability of this service in your location please contact your nearest DHL office.

A shipment is deemed unacceptable if its packaging is absent or inadequate, or if transporting the shipment would present risks of damaging equipment, other packages or injuring personnel. DHL reserves the right to either not accept or return the shipment to the shipper. These network restrictions are subject to change with 30 days' notice.

SERVICE OFFERING

Export
Services

Enabling
Your Growth

Optional
Services

Surcharges

Customs
Services

ENABLING YOUR GROWTH

We aim to empower our customers' success, not only through excellence and innovation, but also by arming them with research and insights. Discover two tools here that can help you plan for the future.

ARE YOU CONNECTED?

To be successful in today's evolving world, it is crucial to understand trends around connectedness and globalization.

The latest edition of the [DHL Global Connectedness Report 2024](#), released in partnership with New York University's Stern School of Business, revealed a remarkable finding: even in times marked by severe conflict, globalization reached a record high in 2022 and remained near that level in 2023.



Globalization continues

- Despite recent crises, globalization shows no signs of reversing, due to the resilience and growth of international flows of trade, capital, information and people.
- Globalization has not given way to regionalization. Most international flows have taken place over stable or longer distances.



- The world's current depth of global connectedness is only 25%.
- There is still ample room for growth. The world's absolute level of globalization remains limited; domestic flows still far exceed international flows.

LOGISTICS INSIGHTS: SHAPING YOUR TOMORROW

What are the social, business and technology trends disrupting the logistics industry? What do they mean for your business? The [Logistics Trend Radar](#) examines increasingly important trends: 40 in all. Two very current clusters emphasized in more detail are **Sustainability** and **Artificial Intelligence (AI)**.

The Logistics Trend Radar looks at Sustainability and the logistics solutions that address this, from Renewable Energy Infrastructure to Sustainable Fuels and more. Special focus is also given to many aspects of AI that influence logistics and the supply chain, from Advanced Analytics, AI Ethics, Audio AI and Computer Vision to Generative AI.

Shape your tomorrow with sharp and timely insights. Take advantage of the Logistics Trend Radar research to discover how you can leverage key trends within your supply chain.

The future is arriving fast! And DHL is here to support you at every step of your journey.

LOGISTICS
TREND RADAR 7.0
Insights. Shaping Tomorrow.

© DHL Logistics Trend Radar is a registered trademark of DHL International GmbH, Germany



SERVICE OFFERING

[Connecting Your World](#)
[Sustainability](#)
[▶ Service Offering](#)
[How to Ship with DHL Express](#)
[Digitalization](#)
[Zones and Rates](#)
[Export Services](#)
[Enabling Your Growth](#)
[Optional Services](#)
[Surcharges](#)
[Customs Services](#)

OPTIONAL SERVICES*

GoGreen Plus

When selected, DHL will reduce (inset) CO2 emissions from air transport through the purchase of Sustainable Aviation Fuel (SAF). SAF can reduce lifecycle carbon emissions by up to 80% compared to traditional jet fuel. GoGreen Plus – Carbon Reduced service, supports Scope 3 emission reductions in alignment with the Science Based Target initiative. The process is audited annually by SGS (Société Générale de Surveillance) to ensure compliance with regulations and standards. Alternative reduction levels and CO2 emission reports are available on contractual basis only.

From \ To	Asia	Europe	Americas	ROW
Asia	26,0	54,0	65,0	52,0
Europe	124,0	53,0	96,0	32,0
Americas	116,0	56,0	36,0	97,0
ROW	86,0	46,0	82,0	19,0

* All rates are stated in roubles exclusive of VAT.

Tariff is calculated for each full and non-full kilogram. Each non-full kilogram is rounded up with increment of 0.5 kg.

Dedicated Pickup

If your business needs a dedicated vehicle to collect unusual shipments, or a pickup outside normal business hours, we can arrange this for you.

Dedicated Delivery

On customer request, an immediate or non-routine, once-only delivery of a shipment within a normal working day or a holiday that involves a specific vehicle such as tail lift truck or more than one courier.

Saturday Pickup

In countries where Saturday is not a normal working day, DHL can arrange an ad-hoc pickup of smaller shipments up to 30kg. The service is available at selected postal locations only.

Saturday Delivery

We offer Saturday delivery services to key cities in more than 70 countries.

Shipment Insurance**

We recommend this comprehensive protection for your valuable or personal shipments, giving you peace of mind in the unlikely event of physical damage or loss. The service is subject to specific limitations and exclusions as described in our [Terms and Conditions](#).

Extended Liability

DHL Express always takes the greatest of care with your documents. Unfortunately, accidents can sometimes happen and our Extended Liability service will provide you with additional peace of mind and financial protection. The fixed compensation is 45 000 RUB in case of loss, regardless of document value.

Shipment Preparation

This is a convenient, fast and reliable service for seasonal or irregular shipments that require extra resources for their preparation. DHL manages the entire process of waybill preparation, content selection, labeling and packaging, then sends the shipments to the designated addresses.

Packaging Supplies

Charges apply for all DHL standard packaging items including plastic flyers provided in bulks or stacks.



* For more information on the availability of these services in your location please contact your nearest DHL office. Please make a request for these optional services when booking DHL courier. DHL reserves the right to apply additional charges for these services as well as any not shown in this guide.

** Transportation with the declared value.

SERVICE OFFERING

 Connecting Your World

 Sustainability

 ► Service Offering

 How to Ship with DHL Express

 Digitalization

 Zones and Rates

 Export
Services

 Enabling
Your Growth

 Optional
Services

Surcharges

 Customs
Services

➔ OPTIONAL SERVICES*

Verbal Notification

Customer Service will contact you by phone and provide verbal updates on agreed key transport events or incidents with a potential impact on transit time.

Hold for Collection

On shipper request, a shipment is held at the default DHL delivery facility at destination for consignee collection, rather than attempt a delivery at the receiver's address. The service is booked through Customer Service or supporting shipping tools. The destination will notify the receiver when and at which facility the shipment is ready to collect. A consignee cell phone number is mandatory.

Residential Address

Customers shipping to a home or private residence can activate specific delivery options by designating the delivery address as residential. For such shipments, DHL will proactively notify the receiver via email or SMS about the shipment's progress. Receivers can then select the most suitable delivery option via [On Demand Delivery](#).

Direct Signature

If you are sending sensitive documents or high value contents you can request DHL to obtain a direct signature from the consignee or a representative at the delivery address. DHL will ensure your shipment is not re-directed, or delivered at an alternative address.

Adult Signature

Delivery of a shipment to an adult. DHL will obtain a delivery signature from an adult at the stipulated delivery address.

Change of Billing

This applies when a customer requests a change of defined billing information on an already issued invoice, which will result in a reissuing of the invoice and, in case of an account change, crediting of the old account and debiting of the new.



* For more information on the availability of these services in your location please contact your nearest DHL office. Please make a request for these optional services when booking DHL courier. DHL reserves the right to apply additional charges for these services as well as any not shown in this guide.

DUTY BILLING SERVICES

Duty Tax Paid

At customer's request, DHL clears the shipment at destination and arranges for the applicable import duties, taxes and regulatory charges to be invoiced to a specified DHL account at origin or third country, rather than the receiver of the shipment being billed at destination. Charges apply only in case of customs payments, duties and other fees being charged for customs declaration in the country of destination.

Duty Tax Importer

At customer's request, DHL clears the shipment at destination and arranges for any applicable import duties, taxes and regulatory charges to be invoiced to a specified DHL account at destination. The duty tax payer will be invoiced an extra charge based on a flat rate or a percentage of the fiscal charges that were advanced.

SERVICE OFFERING

 Connecting Your World

 Sustainability

 ► Service Offering

 How to Ship with DHL Express

 Digitalization

 Zones and Rates

 Export
Services

 Enabling
Your Growth

 Optional
Services

Surcharges

 Customs
Services

SURCHARGES*

Fuel Surcharge

The jet fuel surcharge will be based on the daily average spot prices for U.S. Gulf Coast (USGC) kerosene-type jet fuel, as reported by the U.S. Department of Energy between third week release of prior month to third week release of actual month.

The diesel fuel surcharge will be based on the daily average spot prices for U.S. Gulf Coast (USGC) Ultra-Low-Sulfur No. 2 Diesel Fuel, as reported by the U.S. Department of Energy between third week release of prior month to third week release of actual month.

For example, the daily average price for fuel from 18th April to 15th May is used to determine the applicable surcharge in June.

The Fuel Surcharge applies to transportation charges on all services and to the following surcharges (where applicable): Saturday Delivery, Saturday Pickup, Elevated Risk, Demand Surcharge, Emergency Situation, Remote Area Delivery, Remote Area Pickup, Dedicated Pickup, Dedicated Delivery, Residential Address, Overweight Piece, Oversize Piece, Non-Stackable Pallet and Non-Conveyable Piece.

DHL reserves the right to change the fuel surcharge index and table with or without notice. Both the amount and duration of the surcharge will be determined at DHL's sole discretion.

Remote Area

If you need to send a parcel or a document to a remote location anywhere in the world DHL will deliver the shipment you need. Special tariffs apply. The list of remote locations is available at express.dhl.ru or on pages 24-34 of this Guide.

Non-Stackable Pallet

This fixed surcharge is applied to every pallet within a shipment that cannot be stacked, either on request by the shipper, or because of its shape, content or packaging. This surcharge does not apply to pallets below 30kg.

Overweight Piece

A fixed surcharge is applied to every piece, including a pallet that exceeds a scale or volumetric weight of 70kg.

Oversize Piece

This fixed surcharge applies to every piece, including a pallet, with a single dimension in excess of 100cm. Does not apply to pieces already subject to Overweight Piece surcharge.

Non-Conveyable Piece

This surcharge applies to any piece within a shipment with an actual weight between 25kg and 70kg. Does not apply to pieces already subject to the Overweight or Oversize Piece Surcharges.

Demand Surcharge

One or more Demand Surcharges will apply to shipments during a period of high demand. A period of high demand is to be determined by DHL at its own discretion but may include a time of high demand for shipping services or a period with high operational cost. Details regarding the application of Demand Surcharges are set forth at mydhl.express.dhl and will be subject to change upon prior notice. Demand Surcharges apply cumulatively if a shipment and/or individual pieces meet more than one of the specified criteria. Demand Surcharges apply in addition to the rates and any other applicable charges.

Emergency Situation

A temporary surcharge, which allows us to cover operating cost increases due to an emergency situation out of DHL's control. Change in market dynamics and air capacity availability is reflected through regular price adjustments. The charge will be applied pro rata based on the chargeable weight (invoiced weight) of a shipment.

Dry Ice (UN1845)

A surcharge is applied when the transportation of shipments involves handling Dry Ice (UN1845) as a freezing agent for non-dangerous goods such as diagnostic specimens. Contractual agreement required.

Biological Substance (UN3373)

Shipments containing Biological Substances Category B (UN3373) or genetically modified organisms as per UN3245 are only accepted in combination with DHL Medical Express. Contractual agreement required.

* For more information on the availability of these services in your location please contact your nearest DHL office. Please make a request for these optional services when booking DHL courier. DHL reserves the right to apply additional charges for these services as well as any not shown in this guide.

SERVICE OFFERING

Export
Services

Enabling
Your Growth

Optional
Services

Surcharges

Customs
Services

➔ SURCHARGES*

Lithium Batteries Section II**

Shipping Lithium Batteries *with* equipment

A service charge will be assessed on Lithium-Ion and Lithium-Metal batteries **with** equipment. Packaging must be compliant with the appropriate IATA Packing Instruction (PI): 966 for Lithium-Ion and 969 for Lithium-Metal, Section II respectively. Accepted from approved shippers only.

Shipping Lithium Batteries *in* equipment

Shipments containing Lithium-Ion or Lithium-Metal batteries **in** equipment are accepted only in compliance with the appropriate IATA Packing Instruction (PI): 967 for Lithium-Ion and 970 for Lithium-Metal, Section II respectively.

DHL **will not accept** any shipment that is known or suspected to contain defective or damaged batteries.

Address Correction

A fixed surcharge is applied per shipment when the destination address provided by the Shipper is incomplete, outdated or incorrect and DHL is subsequently unable to deliver the shipment. DHL searches and determines the correct address to complete the delivery.

Data Entry

This fixed surcharge applies for each shipment consigned with non-electronic, paper based manual waybills. Electronic shipping documentation incurs no additional charges. Will not be applied when ordering some of additional services. Please check the list of these services: <https://express.dhl.ru/en/info/dop/>.

Security Charges

Additional surcharges may apply when shipping to or importing from a destination country where DHL is operating at elevated risk due to continuous state of war, civil unrest, or continuous threats from terrorism (**Elevated Risk**), or when shipping to or importing from a destination country that is subject to trade restrictions imposed by the UN Security Council or by national legislation such as the European Union or the US Office of Foreign Assets Control (OFAC) (**Restricted Destination**).

Premium 9:00/10:30/12:00

A fixed premium charge applies to DHL Express 9:00/10:30/12:00 service for international shipments.



* For more information on the availability of these services in your location please contact your nearest DHL office. Please make a request for these optional services when booking DHL courier. DHL reserves the right to apply additional charges for these services as well as any not shown in this guide.

** Please alert DHL Express whenever you intend to send any shipments containing Lithium Batteries. Our team of experts will be pleased to guide you through the latest IATA Dangerous Goods Regulations.

SERVICE OFFERING

 Connecting Your World

 Sustainability

 ► Service Offering

 How to Ship with DHL Express

 Digitalization

 Zones and Rates

**Export
Services**
**Enabling
Your Growth**
**Optional
Services**
Surcharges
**Customs
Services**

CUSTOMS SERVICES

Navigating the customs landscape is made easier by DHL's extensive knowledge and experience of both standard and non-routine customs-clearance processes. Get answers to many of your questions with our new online tool, [My Global Trade Services](#) tool, which will help you expand across borders – and concentrate on your core business.

- All non-document shipments require a commercial invoice or a proforma invoice.
- Our customs specialists are ready to provide advice based on about 35 years experience in customs clearance procedures in accordance with Russian customs legislation. For more information on customs services please contact your nearest DHL office.
- Supplementary clearance services are available.
- Customs-related terminal handling services are available

Customs Declaration Services and the Range of Terminal Cargo Handling Services including Loading and Unloading

The whole range of tasks related to arranging customs declaration, including analysis of shipping documentation, establishing of HS Codes, compiling sets of documents, assistance in drawing up standard letters on behalf of the client, drawing up of customs declaration forms, as well as the range of services related to terminal cargo handling, including loading and unloading, and registration and logging of cargo at bonded warehouse storage facilities. Arrangement of customs declaration also includes submission to customs authorities of customs declaration forms, and the full set of documents and records for the goods, and attendance at both customs inspections and clearance, and at the release and return of goods from storage.

Storage of Goods at Bonded Storage Warehouse

There is a single tariff for all cargo moving through DHL network. Payment is not applicable to goods storage on the first weekend or public holidays after arrival, if they fall earlier than on the fourth working day after the cargo has been placed in storage.

Multiline entry

Charges apply when extra lines are recorded on the customs clearance, for example with different commodities or different countries of manufacture.

Specialised Forms of Inspection (veterinary, phytosanitary, DRM, health and safety)

Veterinary, phytosanitary and health and safety inspections are carried out in cases where HS Codes correspond to the relevant control measures. These are obligatory for all goods of vegetable and animal origin, as well as those goods in direct contact with humans capable of causing harm to health.

DRM – is the control of fissile and radioactive materials. This service consists of the receipt of the requisite documentation from the state supervisory authorities.

Export Declaration

Applies in countries where an export declaration is required for shipments containing controlled commodities or exceeding a certain value threshold or weight. Where automated export

systems are available to the public, shippers may avoid the charge by submitting the export declaration online. In case of IMP billed shipments DHL will submit the export declaration in order to accelerate the export at origin and pass the charge to the importer's account.

Arranging Preliminary Inspections

This is carried out where applicable for the purposes of identifying the load, ascertaining the quantity, weight, name and intended use of the goods. The preliminary inspection is necessary for the assignment of the correct HS Code for declaration of the goods to the customs authorities. It is applicable in instances where accompanying documentation lacks sufficient information required for customs declaration of the cargo, where discrepancies with the goods records declared in the shipping documents have been previously discovered.

Adjustment of information in Customs Declaration (per Customs Declaration)

DHL provides the service of compiling the adjustment to customs values document.

Representing of Represented Entity within additional control of functional departments of Customs

Representation of client's interests at conducting of inspections of declared records by customs authorities departments. Required in cases where terms for approval, or of a decision taken, have been entrusted to specialized customs departments. For example confirmation of HS code or approval or determination of goods' customs value etc.

Preparation of the set of documents

Preparation of the set of documents (beyond the scope of standard documentation), required for declaring goods to the customs authorities.

Examples:

- Research and preparation of technical description for goods;
- Preparation of translations;
- Maintenance of database for client's goods;
- Compiling invoices and translating their contents.

Receipt of Confirmation from Border Customs Officials of De Facto Goods Exportation

Presentation of goods to border customs officials, receipt and dispatch to client of written confirmation of de facto exportation in cases of export.

Applicable on request of the client only for cargo subject to individual goods declarations.

Physical Intervention

A surcharge applies for shipments intercepted for physical examination by customs authorities. Arrangements for inspections may also include full or partial unloading of a vehicle, the specific marking of prototypes, mutilation of samples or the examination of shipment content.

HOW TO SHIP WITH DHL EXPRESS

Preparing Your Shipment

Packaging Your Shipment

Paying for Your Shipment

PREPARING YOUR SHIPMENT: AS EASY AS 1-2-3

1 Shipment weight

- Please weigh and measure your shipment.
- If you are sending a large but lightweight shipment, where its volumetric (dimensional) weight exceeds its actual weight, the cost of the shipment is calculated on the space your consignment takes up on the aircraft. This is a standard IATA method. To calculate the volumetric weight of your shipment, simply multiply the length by height by width in centimeters, then divide the total sum by 5,000 for each piece in the shipment.
- Any piece in the shipment may be re-weighed and/or re-measured by DHL to confirm this calculation.

2 Documentation required: waybill

- All shipments sent with DHL Express need to have a fully completed DHL waybill or label securely attached to each piece. This will enable the successful movement of your shipment through the DHL network. Each waybill or label is individually numbered to allow you to track your shipment from collection through to delivery.
- Your shipment may also need to be accompanied by customs documentation, such as a commercial or proforma invoice, as well as additional paperwork depending on the contents and value of the shipment and the country you are sending to.

3 Documentation required: invoice

- A commercial or proforma invoice is required when sending non-document shipments to countries and territories outside your origin country or customs union. This is essentially a declaration containing all the details of a transaction and is used by customs authorities to assess if duties or taxes are payable.
- A commercial invoice is used when goods are part of a commercial transaction or intended for resale.
- A proforma invoice is used when sending goods of no commercial value (for example, when sending samples).



HOW TO SHIP WITH DHL EXPRESS

Connecting Your World

Sustainability

Service Offering

▶ How to Ship with DHL Express

Digitalization

Zones and Rates

Preparing Your Shipment

Packaging Your Shipment

Paying for Your Shipment

PREPARING YOUR SHIPMENT INVOICE

This invoice template covers the key data elements required for a successful customs clearance. To help us ensure the service we provide is efficient and high-quality, visit mydhl.express.dhl for more guidance.

COMMERCIAL INVOICE								
SENDER				GENERAL INFORMATION				
Company Name: Contact Name: Building Name: Street Name & Number: Postcode: City/Country: Business/Private: Phone: Email: Tax ID/VAT Number: EORI Number:				Date: Waybill Number: Invoice Number: Shipment Reference Number: Receiver Reference Number:				
RECEIVER				BILLED TO/IMPORTER OF RECORD (IOR) (if different from Receiver)				
Company Name: Contact Name: Building Name: Street Name & Number: Postcode: City/Country: Business/Private: Phone: Email: Tax ID/VAT Number: EORI Number:				Company Name: Contact Name: Building Name: Street Name & Number: Postcode: City/Country: Business/Private: Phone: Email: Tax ID/VAT Number: EORI Number:				
OTHER REMARKS								
Please add any additional critical information or specific country clearance requirements that might be relevant e.g. bank details, special formalities etc.								
Line Number	Full Description of Goods	Commodity Code <small>(Full Import HS Code Preferred)</small>	Country of Origin	Qty	Unit Value & Currency	Sub-Total Value & Currency	Net Weight	Gross Weight
1								
2								
3								
						Total Goods Value & Currency	Total Net Weight	Total Gross Weight
Number of Invoice Line Items: Total Units: Number of Pieces:		Insurance Cost: Freight Cost: Other Costs: VALUE (for Customs Purposes): Import Customs Duties – <i>pre calculated</i> Import Taxes (VAT/GST) – <i>pre calculated</i> TOTAL (with Import Customs Duties/Taxes):						
Reason for Export: Type of Export: INCOTERM: INCOTERM Place:		Terms of Payment: Payer of GST/VAT: Duty/Tax Billing Svc:						
Carrier: Ultimate Consignee:								
Export License Number: Import License Number:								
I/we certify the information on this invoice is true and correct and that the contents of this shipment are as stated above.								
Name: _____			Title: _____			Email: _____		
Date: _____			Signature: _____					

HOW TO SHIP WITH DHL EXPRESS

 Connecting Your World

 Sustainability

 Service Offering

 ► **How to Ship with DHL Express**

 Digitalization

 Zones and Rates

Preparing Your Shipment

Packaging Your Shipment

Paying for Your Shipment

PACKAGING YOUR SHIPMENT

To ensure that your shipments travel safely and securely through the DHL Express global network, it is important that they are packaged and labeled correctly.

Packaging guidelines

- If you are re-using envelopes or boxes, please ensure that old labels and markings are removed
- Securely fix a waybill to each piece in your shipment. The waybill can be thought of as the shipment's airline ticket and it will delay delivery if it becomes separated from your shipment
- The barcodes on the waybill are scanned at numerous points during your shipment's journey. Please ensure the barcode is flat and not covered by tape, shrinkwrap or strapping
- Place a waybill on the top or side of each piece in your shipment and please ensure it does not overlap the corners or edges of boxes
- Use adequate protective wrapping for fragile or delicate items and ensure they are packed as far away as possible from the corners of boxes
- To prevent injury to our employees, please pay special attention to the packaging of sharp items. There should not be any possibility of the contents piercing the packaging
- Any individual pieces over 70kg should be placed on a pallet. If you are sending a multi-piece shipment, it is not necessary to place the individual pieces on a pallet unless they exceed 70kg. For example, a shipment comprising four 25kg pieces does not have to be placed on a pallet

DHL packaging

We offer a range of high-quality DHL-branded packaging items, suitable for shipping items of all shapes and sizes.

The items available include:

- Flyer bags
- Cardboard document envelopes
- Boxes in a range of sizes
- Tubes
- Bottle boxes

For more information on the range of packaging available, please contact your DHL Account Manager or local Customer Service team.

Prohibited and Restricted Commodities*

Prohibited Items

1. Animals, fish, birds (live) (Including mammals, reptiles, spiders, fish and birds).
2. Human remains or ashes in any form. This includes human embryos, placenta and ashes formed as gemstones.
3. Precious metals and bullions (in ingots, coins, etc.); precious and semi-precious stones; articles of precious metals and bullions, precious and semi-precious stones.
4. Cash (bank notes, currency notes and coins).

5. Military items: firearms and edged weapons, ready for use for their intended purpose; explosives; ammunition; shells; cartridges; explosive devices containing substances that are resistant to storage and transportation, etc.; parts, mechanisms of firearms, accessories (sight, trigger, bolts and nuts, mounts, sights, night vision devices, butts, silencers, flashlights, magazines, flash silencers and unmasking devices, etc.); other military items subject to control/licensing (items "designed or modified for military use", namely: spare parts for tanks and anti-aircraft missiles, control panels, navigation equipment, control units, ammunition counters, fire control device, instrumentation sensors speed, spare parts and components designed or modified for military use, spare parts or equipment for aircraft and helicopters designed or modified for military use, etc.).
6. Ivory and illegal goods. Any goods considered to be illegal (as determined either by the exporting country, transit points, importing country or international law) are prohibited for carriage. E.g. pornography, pirated goods, goods certain narcotics (heroin, cocaine), counterfeit products, smoking blends containing the following ingredients: sage predictors (*Salvia divinorum*), hawaiian rose (*Argyrea nervosa*), blue lotus (*Nymphaea caerulea*).
7. Hunting trophies (animal skins, stuffed animals or birds, horns, skulls, etc.).
8. Toy and pneumatic guns.
9. Imitation or replica firearms, ammunition, explosives/explosive devices. Electrical shock equipment, guns with electrical shock, electric shockers or any other items capable of producing an electric discharge with the aim of causing harm, injury or temporary disablement (directly or indirectly intended for these purposes). Objects that may potentially be used as a weapon, but this is not their direct purpose (kitch-



*For more information on restricted commodities please contact your nearest DHL Express office.

HOW TO SHIP WITH DHL EXPRESS

 Connecting Your World

 Sustainability

 Service Offering

 ► How to Ship with DHL Express

 Digitalization

 Zones and Rates

Preparing Your Shipment

en knives), including decorative products (sabres, swords, etc.) are accepted for carriage without restrictions, but the sender shall attach the certificate /passport (with stamp), that the given object is not a cold weapon.*

10. Medicinal Cannabis.

11. Counterfeit goods in breach of IPR.

12. Shipments from 'cash shippers' or any shipments tendered at retail/service points that contain a combination of electronic/electrical devices AND liquids, gels, or gel-like substances.

Restricted items.

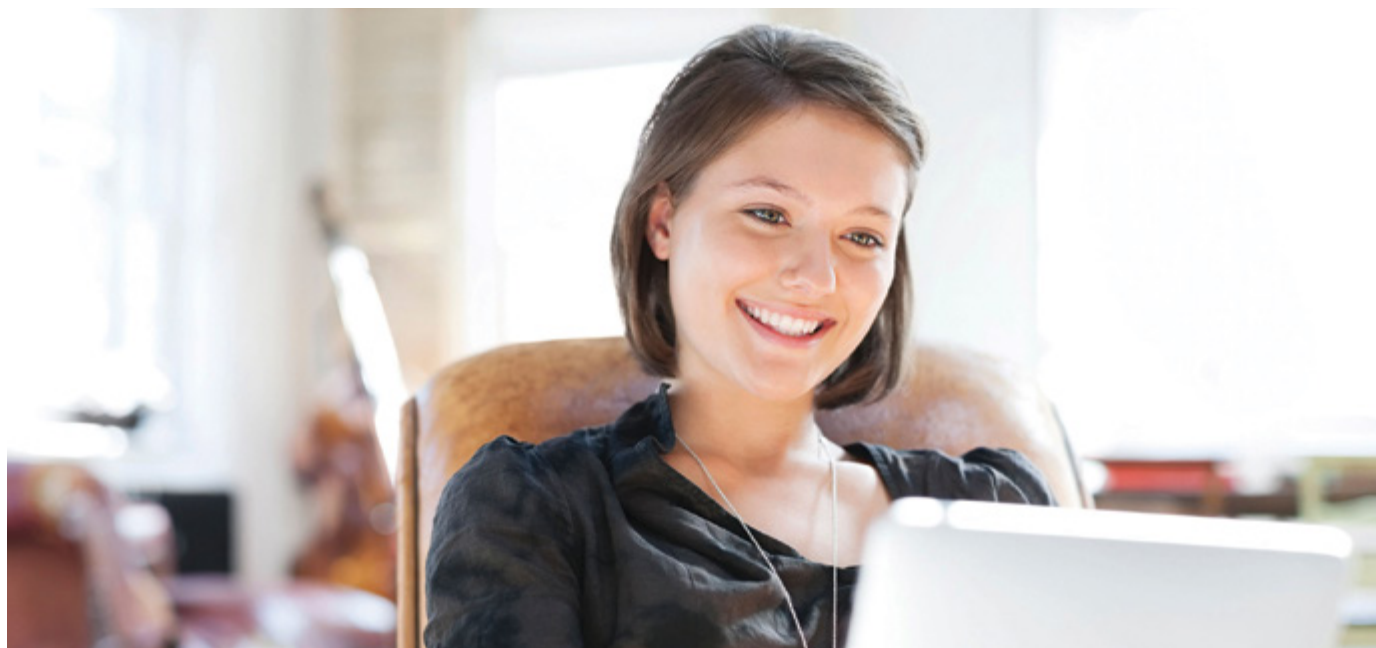
1. Antiques and works of art.
2. Excise stamps/post stamps.
3. Raw tobacco and tobacco products (cigarettes, cigars, cigarillos, smoking and pipe tobacco, e-cigarettes and their components).
4. Negotiable instruments in bearer form (whether cash-like or not). E.g. activated SIM cards for mobile telephones, blank or activated credit or cash dispenser cards, blank checks, event tickets whether cash-like or not, lottery tickets, money or postal orders, pre-paid phone cards, tickets (blank stock), Traveller's Cheques, vouchers/tokens, unused stamps, gift cards etc. DHL prohibits the transportation of negotiable instruments (documents) to bearer. However, as an exception, certain approved customers who have significant volumes of cargo on DHL's network may be permitted to carry travelers checks and activated credit cards (GSOP Shipment and Product Handling Policy and Standards - Travelers Checks and Activated Credit Cards).

Packaging Your Shipment

5. Perishable goods: plants seedlings, fresh vegetables and fruits, mushrooms, berries, grass, frozen food and food that require temperature maintenance, not placed in a thermal box.
6. Jewelry**** worth more than 100,000 euros** for the entire cargo for legal entities. For shipments to individuals, the limit is to exceed 25,000 euros** per shipment.
7. Watches without precious metals****. Individual items worth more than 100,000 euros** of total shipment value for legal entities. When shipped to private individuals, the value of total shipment is limited to 25,000 euros**. If the assessed value does not exceed specified limits, the watches are accepted without restrictions.*
8. Valuable collectibles, including but not limited to the first editions of books or comics, trade cards, worth more than 10,000 euros** the total shipment value for legal entities. When shipped to private individuals, the value of total shipment is limited to 2,000 euros.**

PAYING FOR YOUR SHIPMENT

You can pay for DHL Express services either with cash or a credit card***. You can open an account with DHL Express to pay via bank transfer; and all account customers receive invoices on a pre-agreed basis. For more details, please get in touch with a Customer Service Advisor at your local DHL Express office or go to express.dhl.ru/en.



* Prohibited to import to Russia

** Or equivalent in RUB.

*** Availability of payment in cash or by credit card to the courier is limited. For more information on restricted commodities please contact your nearest DHL Express office.

**** Special conditions of shipping are applied for customers. The maximum value of the shipment for cash customers should not exceed 10,000 euros**. Extended liability is available only for sending shipments worth up to 10,000 euros**.

DIGITALIZATION

Connecting Your World
Sustainability
Service Offering
How to Ship with DHL Express
▶ Digitalization
Zones and Rates

Digitalization is one of the most important trends impacting logistics, and it is one of the key pillars of DHL Group’s strategy. Through digitalization we bring benefits for our customers, our operations and our own people.

We invest continually in market-leading technologies to help our customers to manage and monitor shipments, create shipping labels, get quotes, schedule courier pickups, connect with us and more. Digitalizing our operations provides more transparency, allowing us to better anticipate and meet our customers’ needs.

MYDHL+



MyDHL+ re-imagines the way the shipping business does business, by combining the tools and services our customers use most. With its mobile friendly and intuitive interface, customers can now import, export, schedule a pickup, track shipments and pay bills more quickly than ever – all in one visit, with one password and zero headaches. MyDHL+ makes it incredibly easy to navigate the complexities of international shipping.

mydhl.express.dhl

DHL EXPRESS COMMERCE

Take your website international with DHL Express Commerce. Offer your customers all the benefits of DHL Express at your checkout in real-time. Import, manage and ship their orders quickly and efficiently with no complicated development. Add the power of DHL Express to your e-commerce business quickly and easily, giving you the competitive edge. DHL Express Commerce integrates with the biggest e-commerce platforms, including: Magento, Shopify, WooCommerce, Amazon and eBay.

MY GLOBAL TRADE SERVICES



My Global Trade Services (MyGTS) is your digital advisor on cross-border customs information. It is an online self-service portal that helps users pre-plan shipments. If you are wondering what the harmonized shipping (HS) codes are for your goods, what the estimated total cost of your shipment will be, what can help get your goods cleared or what documentation may be required, find the answers and more on MyGTS.

The benefits? Pre-plan your shipment journeys to minimize delays and unexpected customs or tax costs by better understanding customs requirements and potential prohibitions and restrictions.

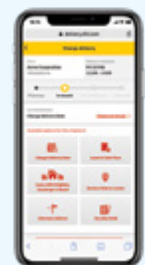
dhl.com/express/mygts



ON DEMAND DELIVERY

DHL’s On Demand Delivery tool keeps receivers informed of shipment progress, allowing them to reschedule, reroute, release or conveniently collect from a DHL Service Point. It is an innovative, easy-to-use, mobile-friendly service, especially for residential deliveries.

Designed to enhance the online shopper’s experience, the service is available globally, meaning consistent service standards and a harmonized user experience.



ondemand.dhl.com



Change delivery date



Leave in safe place



Deliver to alternative address



Collect from Service Point or locker



Vacation hold



Leave with neighbor, concierge or guard

DIGITALIZATION

 Connecting Your World

 Sustainability

 Service Offering

 How to Ship with DHL Express

 ▶ Digitalization

 Zones and Rates

EXPRESS.DHL.RU

Our website provides a comprehensive guide to DHL Express shipping services, as well as transport news, service updates and contact details. To make doing business with us even easier, the site features interactive tools that include online booking, tracking and a volumetric weight calculator.



ROBOTICS

Driven by rapid technological advancements and increasing supply chain complexity, robotics solutions are entering the logistics environment, boosting productivity and driving zero-defect processes.

Robots are adopting more roles at DHL Express, assisting workers with the most repetitive and labor-intensive tasks and freeing them up to do higher-order, customer-facing activities. Examples include the use of articulated robotic arms for inducting flyers and small parcels at 99.99% accuracy, ensuring faster processing and fewer mis-sorts. We have four such robots in use globally, with plans for more in the future.

Our robots help connect your shipments through our network at higher speed and quality, by giving operations extra help.



DIGITAL TRUST

Logistics requires transferring data and content around the world and we embrace a responsibility to do this securely. Our standards led by our Binding Corporate Rules and by our [Data Privacy Policy](#) apply throughout the DHL Group and are approved by the Supervisory Authorities. We maintain a comprehensive [Information Security](#) and [Data Protection](#) approach based on ISO/IEC 27001:2013 and GDPR, to ensure a high standard when managing customer information assets and personal data. We aim to provide a rapid response to any security incident via our 24x7 Cyber Defence Centre (CDC) with global coverage and our global DPO community.

DHL Group acts as controller in respect of any personal data it receives from customers and holds to effectively provide transportation services and in regard to the delivery of any shipments or documents that it processes to perform its contractual obligations. DHL Group will act as a data controller when an individual is executing their rights under privacy legislations.

ZONES AND RATES

Calculate the Price
of Your Shipment

Optional
Services

Surcharges

Customs
Services

Service Capability
and Rating Zones

Export
Services

OPTIONAL SERVICES

Optional Services*	How we charge	Additional charge
GOGREEN Plus	Per kg	Min. 32 RUB***
Dedicated Pickup / Saturday Pick up	Per kg; per shipment	Holiday pickup **** the tariff is 45 RUB per kg, min. 2 880 RUB** per shipment; and Saturday pickup the tariff is 2 880 RUB**
Saturday Delivery	Per shipment	The tariff is 3 840 RUB**
Shipment Insurance	Per shipment	1% of declared value, minimum charge is 1 000 RUB***
Extended Liability	Per shipment	The tariff is 480 RUB***
Shipment Preparation	Per shipment	The tariff is 640 RUB***
Packaging	Per shipment	The tariff depends on the type of packaging ¹
Duty Tax Paid	Per shipment	2% of customs duties and taxes, minimum charge is 1 550 RUB***
Verbal Notification	Per shipment	The tariff is 480 RUB***
Residential Address	Per shipment	The tariff is 500 RUB**
Direct Signature	Per shipment	The tariff is 500 RUB***
Adult Signature	Per shipment	The tariff is 500 RUB***
Change of Billing	Per bill	The tariff is 1 900 RUB***

CUSTOMS SERVICES

Customs Services	How we charge	Additional charge
Formal Clearance	Per shipment	Depends on shipment value
Representing of Represented Entity within additional control of functional departments of Customs	Per shipment	The tariff is 3 200 RUB***
Bonded Storage	Per shipment	10.0 RUB/kg/day and 570 RUB/shipment/day starting from the 4th day of storage***
Export Declaration	Per shipment	Minimum 21 600 RUB if shipment value is more than 1 000 EUR***
Non-Routine Entry	Per shipment	Minimum 9 000 RUB***
Physical Intervention	Per shipment	The tariff is 3 100 RUB***

¹ The cost of packaging provided upon shipment pickup will be 350 RUB (except for smartphone/laptop/tablet computer boxes).***

* For more information on the availability of these services in your location please contact your nearest DHL office. Please make a request for these optional services when booking DHL courier. DHL reserves the right to apply additional charges for these services as well as any not shown in this guide.

** All rates are stated in RUB exclusive of VAT and fuel surcharge.

*** All rates are stated in RUB exclusive of VAT.

**** The extra charge will be applied to all cash/credit cards shipments.

ZONES AND RATES

Calculate the Price
of Your Shipment

Optional
Services

Surcharges

Customs
Services

Service Capability
and Rating Zones

Export
Services

SURCHARGES

Surcharges*	How we charge	Additional charge
Fuel Surcharge	Variable surcharge	Updated information about Fuel Surcharge is posted monthly at https://express.dhl.ru/en/info/toplivnaya-nadbavka/ . DHL Express reserves the right to change the value of Fuel Surcharge and apply it without notice. DHL Express defines the value and effective period of Fuel Surcharge at their sole discretion.
Remote Area	Per shipment; per kg	The tariff is 50 RUB per kg, minimum 2 100 RUB per shipment.**
Overweight Piece	Per piece	The tariff is 9 120 RUB**
Oversize Piece	Per piece	The tariff is 1 900 RUB**
Non-Conveyable Piece	Per piece	The tariff is 1 900 RUB**
Non Stackable Pallet	Per piece	The tariff is 27 300 RUB**
Dry Ice	Per shipment	The tariff is 10 300 RUB***
Shipping Lithium Batteries****	Per shipment	The tariff is 2 000 RUB***
Address Correction	Per shipment	The tariff is 1 100 RUB***
Data Entry	Per shipment	The tariff is 960 RUB***
Restricted Destination	Per shipment	The tariff is 2 880 RUB***
Elevated Risk	Per shipment	The tariff is 2 880 RUB**
Demand Surcharge	Per kg	The tariff is posted at https://express.dhl.ru/dop
Emergency Situation	Per kg	The tariff is posted at https://express.dhl.ru/dop

* For more information on the availability of these services in your location please contact your nearest DHL office. Please make a request for these optional services when booking DHL courier. DHL reserves the right to apply additional charges for these services as well as any not shown in this guide.

** All rates are stated in RUB exclusive of VAT and fuel surcharge.

*** All rates are stated in RUB exclusive of VAT.

**** Please alert DHL Express whenever you plan to send any shipments containing lithium batteries. Our team of professionals will be happy to advise you on the updated IATA rules of dangerous goods transportation.

ZONES AND RATES

Calculate the Price
of Your Shipment

Optional
Services

Surcharges

Customs
Services

Service Capability
and Rating Zones

Export
Services

CALCULATE THE PRICE OF YOUR SHIPMENT



Determine which zone your destination is in (pages 22-23 and 27-37) and whether yours is a document or non-document shipment.



Choose the type of export service (page 5) and how quickly do you want it to arrive?



Based on weight (page 12), zone and speed, confirm your base price.



Add any optional services and check if any surcharges apply.

Base price + Optional services + Surcharges = **Total price**

RATE ZONES FOR INTERNATIONAL DELIVERY

Russian rate zone ¹	International rate zone ¹							
	I	II	III	IV	V	VI	VII	VIII
European Russia (Central, Northwestern, Volga ² , Southern, North Caucasian Federal Districts): zones 1–12	1	2	3	4	5	6	7	8
Urals and Siberia (Urals and Siberian Federal Districts, Perm Krai): zones 13–17	1	3	3	4	5	4	7	8
Russian Far East (Far Eastern Federal District): zones 18–19	2	4	6	7	5	3	4	8

¹ Check the rate zone for your city within Russia on pages 24–34. Check the rate zone for your country where you plan pick up or delivery of your shipment on pages 22–23.

² Except Perm Krai.

ZONES AND RATES

[Connecting Your World](#)
[Sustainability](#)
[Service Offering](#)
[How to Ship with DHL Express](#)
[Digitalization](#)
[▶ Zones and Rates](#)
[Calculate the Price of Your Shipment](#)
[Optional Services](#)
[Surcharges](#)
[Customs Services](#)
[Service Capability and Rating Zones](#)
[Export Services](#)

INTERNATIONAL EXPORT DELIVERY: SERVICE CAPABILITY AND RATING ZONES*

Country	Zone	DHL Express Worldwide**	DHL Express 12:00	DHL Express 9:00	Country	Zone	DHL Express Worldwide**	DHL Express 12:00	DHL Express 9:00
Albania	IV	5			Egypt	VII	3	✓	✓
Algeria	VII	4			El Salvador	VIII	5		
American Samoa	VIII	8			Eritrea	VIII	8		
Andorra	IV	4			Estonia	III	4	✓	
Angola	VIII	7	✓		Eswatini	VIII	5		
Anguilla	VIII	7			Ethiopia	VIII	5		
Antigua	VIII	7			Falkland Islands	VIII	6		
Argentina	VIII	5	✓		Faroe Islands	VIII	6		
Armenia	II	6			Fiji	VIII	8		
Aruba	VIII	7			Finland	III	4	✓	
Australia	VIII	7			France	III	4	✓	✓
Austria	III	4	✓	✓	French Guyana	VIII	7		
Azerbaijan	II	4			Gabon	VIII	6	✓	
Bahamas	VIII	8			Gambia	VIII	7		
Bahrain	VII	3	✓	✓	Georgia	II	5		
Bangladesh	VII	4			Germany	III	4	✓	✓
Barbados	VIII	6			Ghana	VIII	6		
Belgium	III	4	✓	✓	Gibraltar	IV	5	✓	
Belize	VIII	7			Greece	IV	4	✓	
Benin	VIII	4			Greenland	VIII	6		
Bermuda	VIII	5			Grenada	VIII	6		
Bhutan	VII	8			Guadeloupe	VIII	6		
Bolivia	VIII	7			Guam	VIII	8		
Bonaire	VIII	7			Guatemala	VIII	5	✓	
Bosnia and Herzegovina	IV	4			Guernsey	IV	3	✓	✓
Botswana	VIII	7			Guinea Republic	VIII	5		
Brazil	VIII	5	✓		Guinea-Bissau	VIII	11		
Brunei	VII	7			Guinea-Equatorial	VIII	7		
Bulgaria	IV	4	✓		Guyana (British)	VIII	7		
Burkina Faso	VIII	4	✓		Haiti	VIII	7		
Burundi	VIII	5			Honduras	VIII	6		
Cambodia	VII	6	✓		Hong Kong SAR China	VI	4	✓	✓
Cameroon	VIII	6	✓		Hungary	III	4	✓	
Canada	V	5	✓		Iceland	VIII	5	✓	
Canary Islands, The	IV	4			India	VI	4	✓	
Cape Verde	VIII	12			Indonesia	VII	4		
Cayman Islands	VIII	6			Iran (Islamic Republic of)	VIII	7		
Central African Republic	VIII	17			Iraq	VII	6		
Chad	VIII	14			Ireland, Republic Of	III	4	✓	✓
Chile	VIII	5			Israel	VI	4		
China, People's Republic	VI	5	✓		Italy	III	4	✓	✓
Colombia	VIII	5	✓	✓	Jamaica	VIII	6		
Comoros	VIII	11			Japan	VI	5	✓	
Congo	VIII	4			Jersey	IV	4	✓	✓
Congo, The Democratic Republic of	VIII	6	✓		Jordan	VII	3	✓	✓
Cook Islands	VIII	8			Kazakhstan	I	6	✓	
Costa Rica	VIII	5			Kenya	VIII	4	✓	
Cote d'Ivoire	VIII	5	✓		Kiribati	VIII	11		
Croatia	IV	4	✓		Korea, Republic of (South)	VI	4	✓	
Cuba	VIII	8			Korea, The D.P.R of (North)***	VII	8		
Curacao	VIII	7			Kosovo	IV	6		
Cyprus	IV	5	✓		Kuwait	VII	4	✓	✓
Czech Republic, The	III	4	✓	✓	Kyrgyzstan	I	5		
Denmark	IV	4	✓	✓	Lao People's Democratic Republic	VII	7		
Djibouti	VIII	7			Latvia	III	4		
Dominica	VIII	7			Lebanon	VII	4	✓	✓
Dominican Republic	VIII	7			Lesotho	VIII	7		
Ecuador	VIII	5	✓		Liberia	VIII	7		

* The average transit time is indicated in business days for "express documents" without commercial value, when sent from Moscow. Add 1-4 days when sending from other locations. Delivery time may increase due to customs procedures. Service capability may change. For more information about the possibility of providing services in your city and destinations, as well as delivery date and the ability to send specific shipment you can contact your local DHL office, customer service department by contact numbers +7 (495) 956-1000 and 8 (800) 7000-345 or visit dct.dhl.com.

** Average transit time (business days following the day of pick up).

*** Import Express is not available

ZONES AND RATES

- Connecting Your World
- Sustainability
- Service Offering
- How to Ship with DHL Express
- Digitalization
- ▶ Zones and Rates

Calculate the Price of Your Shipment	Optional Services	Surcharges	Customs Services	Service Capability and Rating Zones	Export Services
--------------------------------------	-------------------	------------	------------------	-------------------------------------	-----------------

INTERNATIONAL EXPORT DELIVERY: SERVICE CAPABILITY AND RATING ZONES*

Country	Zone	DHL Express Worldwide**	DHL Express 12:00	DHL Express 9:00	Country	Zone	DHL Express Worldwide**	DHL Express 12:00	DHL Express 9:00
Libya	VII	10			San Marino	III	5	✓	
Liechtenstein	III	6			Sao Tome and Principe	VIII	7		
Lithuania	III	5	✓		Saudi Arabia	VII	4	✓	✓
Luxembourg	III	4	✓	✓	Senegal	VIII	6	✓	
Macau SAR China	VII	7			Serbia, Republic of	IV	4		
Madagascar	VIII	7	✓		Seychelles	VIII	4		
Malawi	VIII	5			Sierra Leone	VIII	7		
Malaysia	VII	4	✓	✓	Singapore	VII	4	✓	✓
Maldives	VIII	5			Slovakia	IV	4	✓	✓
Mali	VIII	6			Slovenia	IV	4	✓	
Malta	IV	4	✓		Solomon Islands	VIII	11		
Mariana Islands	VIII	8			Somalia	VIII	11		
Marshall Islands	VIII	10			Somaliland, Rep of (North Somalia) ***	VIII	10		
Martinique	VIII	6			South Africa	VIII	3	✓	✓
Mauritania	VIII	8			South Sudan	VIII	7		
Mauritius	VIII	4			Spain	III	4	✓	✓
Mayotte	VIII	11			Sri Lanka	VII	5	✓	
Mexico	VIII	5			St. Barthelemy	VIII	7		
Micronesia, Federated States of	VIII	12			St. Eustatius	VIII	7		
Moldova, Republic Of	II	4			St. Kitts	VIII	6		
Monaco	III	6			St. Lucia	VIII	7		
Mongolia	VII	6			St. Maarten	VIII	7		
Montenegro, Republic of	IV	5			St. Vincent	VIII	7		
Montserrat	VIII	7			Sudan	VIII	8		
Morocco	VII	4	✓		Suriname	VIII	7		
Mozambique	VIII	5	✓		Sweden	III	4	✓	✓
Myanmar	VII	6			Switzerland	III	4	✓	✓
Namibia	VIII	7	✓		Syria	VII	13		✓
Nauru, Republic Of	VIII	11			Tahiti	VIII	6		
Nepal	VII	7			Taiwan	VI	4	✓	✓
Netherlands, The	III	4	✓	✓	Tajikistan	II	5		
Nevis	VIII	7			Tanzania	VIII	7		
New Caledonia	VIII	11			Thailand	VII	5	✓	✓
New Zealand	VIII	7			Timor-Leste	VIII	8		
Nicaragua	VIII	6			Togo	VIII	6		
Niger	VIII	7			Tonga	VIII	11		
Nigeria	VIII	5			Trinidad and Tobago	VIII	6		
Niue	VIII	11			Tunisia	VII	6		
North Macedonia	IV	5			Turkey	III	4	✓	
Norway	IV	5	✓		Turkmenistan	VIII	7		
Oman	VII	4	✓		Turks and Caicos Islands	VIII	7		
Pakistan	VII	4			Tuvalu	VIII	11		
Palau	VIII	11			Uganda	VIII	5	✓	
Panama	VIII	5	✓		United Arab Emirates	VII	3	✓	✓
Papua New Guinea	VIII	8			United Kingdom	III	4	✓	✓
Paraguay	VIII	5	✓		United States Of America	V	5	✓	
Peru	VIII	5	✓		Uruguay	VIII	5		
Philippines, The	VII	5	✓	✓	Uzbekistan	II	5		
Poland	III	4	✓	✓	Vanuatu	VIII	11		
Portugal	IV	4	✓	✓	Vatican City	III	5		
Puerto Rico	VIII	6			Venezuela	VIII	8		
Qatar	VII	4	✓	✓	Vietnam	VII	5		
Reunion, Island Of	VIII	7			Virgin Islands (British)	VIII	6		
Romania	IV	4	✓		Virgin Islands (US)	VIII	7		
Rwanda	VIII	5			Yemen, Republic of	VII	7		
Saint Helena	VIII	10			Zambia	VIII	5	✓	
Salvador	VIII	5			Zimbabwe	VIII	7		
Samoa	VIII	7							

* The average transit time is indicated in business days for "express documents" without commercial value, when sent from Moscow. Add 1-4 days when sending from other locations. Delivery time may increase due to customs procedures. Service capability may change. For more information about the possibility of providing services in your city and destinations, as well as delivery date and the ability to send specific shipment you can contact your local DHL office, customer service department by contact numbers +7 (495) 956-1000 and 8 (800) 7000-345 or visit dct.dhl.com.

** Average transit time (business days following the day of pick up).

*** Import Express is not available

ZONES AND RATES

Calculate the Price
of Your Shipment

Optional
Services

Surcharges

Customs
Services

Service Capability
and Rating Zones

Export
Services

DHL EXPRESS WORLDWIDE EXPORT

Calculating the rate:

1. Check the destination countries available for this service in the table on pages 22–23.
2. Using the table “Rating Zones” on pages 24–34 identify Russian rate zone for your location.
3. Identify rate zone number of the destination country in the table on pages 22–23.
4. Reading across numbers of rate zones for origin location and destination country using a table “Rate zones for international delivery” on page 20 identify rate zone.
5. In the table on the page 35 indicate the weight nearest to the weight of your shipment.
6. Reading across from the weight indicator to rate zone will give you the rate for sending your shipment.

Example:

To send your 7 kg parcel using DHL EXPRESS Worldwide from Ekaterinburg to China:

1. Check whether the service is available to China. The answer is yes.
2. In the list of served locations identify rating zone for Ekaterinburg. It is zone 13.
3. Identify zone number for China. It is zone VI.
4. In the table «Rate zones for international delivery» the intersection of Russian rating zone 13 and international rating zone VI gives zone 4.
5. The intersection of zone 4 and 7 kg weight in the table on the page 35 shows the rate.
6. The rate for your shipment is 53 330 RUB.

ZONES AND RATES

[Connecting Your World](#)
[Sustainability](#)
[Service Offering](#)
[How to Ship with DHL Express](#)
[Digitalization](#)
[▶ Zones and Rates](#)
[Calculate the Price of Your Shipment](#)
[Optional Services](#)
[Surcharges](#)
[Customs Services](#)
[Service Capability and Rating Zones](#)
[Export Services](#)

RATING ZONES*

Location	Rating Zone	Remote Area
Ababurovo (Leninskiy distr., Moscow Region)	1	
Abakan (Republic of Khakassia)	16	
Abinsk (Krasnodar Territory)	8	
Achinsk (Krasnoyarsk Territory)	16	✓
Adler (Krasnodar Territory)	11	
Adygeysk (Krasnodar Territory)	8	
Aeroport (Tomsk Region)	15	
Afipskiy (Krasnodar Territory)	8	
Agidel (Republic of Bashkortostan)	12	✓
Agryz (Republic of Tatarstan)	4	✓
Akhtyrskiy (Krasnodar Territory)	8	✓
Akinshino (Naro-Fominsky distr., Moscow Region)	1	
Aksay (Rostov-on-Don Region)	8	
Akulovo (Moscow Region)	1	
Alabushevo (Moscow Region)	1	
Alapaevsk (Sverdlovsk Region)	13	✓
Aleksandrov (Vladimir Region)	2	✓
Aleksandrovo (Podolsky distr., Moscow Region)	1	
Aleksandrovsk (Perm Territory)	13	✓
Alekseevka (Alekseevskiy distr., Belgorod Region)	2	✓
Alekseevka (Kinel, Samara Region)	7	
Aleksin (Tula Region)	2	✓
Aleksandrovka (Zelenograd, Moscow)	1	
Aleksandrovskaya (Kurortnyi distr., St. Petersburg)	3	
Alexandrovskaya (Pushkinskiy distr., St. Petersburg)	3	
Aleysk (Altai Territory)	15	✓
Alkhimovo (Podolsky distr., Moscow Region)	1	
Almet'yevsk (Republic of Tatarstan)	4	
Anapa (Krasnodar Territory)	8	
Andreevskoe (Leninskiy distr., Moscow Region)	1	
Andreevskoe (Podolsky distr., Moscow Region)	1	
Angarsk (Irkutsk Region)	17	
Ankudinovo (Naro-Fominsky distr., Moscow Region)	1	
Anna (Voronezh Region)	2	✓
Anzhero-Sudzhensk (Kemerovo Region)	16	✓
Aprelevka (Naro-Fominsk distr., Moscow Region)	1	
Apsheronsk (Krasnodar Territory)	8	✓
Aramil (Sverdlovsk Region)	13	
Arkhangelsk (Arkhangelsk Region)	10	
Arkhangelyskoe (Naro-Fominsky distr., Moscow Region)	1	✓
Armavir (Krasnodar Territory)	8	
Armazovo (Podolsky distr., Moscow Region)	1	
Arsk (Republic of Tatarstan)	4	
Artemovskiy (Sverdlovsk Region)	13	✓
Arzamas (Nizhniy Novgorod Region)	4	✓
Asbest (Sverdlovsk Region)	13	✓
Asha (Chelyabinsk Region)	12	✓

Location	Rating Zone	Remote Area
Astrakhan (Astrakhan Region)	11	
Atamanovka (Trans-Baikal Territory)	17	
Atkarsk (Saratov Region)	9	✓
Aznakaevo (Republic of Tatarstan)	4	
Azov (Rostov-on-Don Region)	8	
Bachurino (Leninskiy distr., Moscow Region)	1	
Baklanovo (Podolsky distr., Moscow Region)	1	
Baksan (Kabardino-Balkarian Republic)	11	✓
Balabanovo (Kaluga Region)	2	
Balakhna (Nizhniy Novgorod Region)	4	
Balakovo (Saratov Region)	9	✓
Balashikha (Moscow Region)	1	
Baranovo (Naro-Fominsky distr., Moscow Region)	1	
Barnaul (Altai Territory)	15	
Barsovo (Khanty-Mansi Autonomous Area – Yugra)	14	
Barysh (Ulyanovsk Region)	9	✓
Bataysk (Rostov-on-Don Region)	8	
Belaya Kalitva (Rostov-on-Don Region)	8	✓
Belebej (Republic of Bashkortostan)	12	✓
Belgorod (Belgorod Region)	2	
Belogorsk (Amur Region)	19	✓
Beloozerskiy (Voskresenskiy distr., Moscow Region)	1	✓
Belorechensk (Krasnodar Territory)	8	
Beloretsk (Republic of Bashkortostan)	14	✓
Belousovo (Kaluga Region)	2	
Belousovo (Naro-Fominsky distr., Moscow Region)	1	✓
Belovo (Kemerovo Region)	16	✓
Beloyarskiy (Sverdlovsk Region)	13	✓
Belozersk (Vologda Region)	2	✓
Beliy (Krasnodar Territory)	8	
Belyy Yar (Khanty-Mansi Autonomous Area – Yugra)	14	
Berdsk (Novosibirsk Region)	15	
Berezniki (Perm Territory)	13	
Berezovka (Krasnoyarsk Territory)	16	
Berezovka (Republic of Bashkortostan)	12	
Berezovskiy (Kemerovo Reg)	16	✓
Berezovskiy (Sverdlovsk Region)	13	
Beslan (Republic of North Ossetia – Alanian)	11	
Biofabrika (Orel Region)	2	
Birobidzhan (Jewish Autonomous Region)	18	✓
Birsk (Republic of Bashkortostan)	12	✓
Biysk (Altai Territory)	15	✓
Blagoveschensk (Amur Region)	19	
Blagoveschensk (Republic of Bashkortostan)	12	✓
Bobrov (Voronezh Region)	2	✓
Bodaybo (Irkutsk Region)	17	✓
Bogdanovich (Sverdlovsk Region)	13	✓

* Service capability includes large settlements only. For more information please contact your nearest DHL Express office.
 ✓ For remote area locations an additional tariff is applied.

ZONES AND RATES

[Connecting Your World](#)
[Sustainability](#)
[Service Offering](#)
[How to Ship with DHL Express](#)
[Digitalization](#)
[▶ Zones and Rates](#)
[Calculate the Price of Your Shipment](#)
[Optional Services](#)
[Surcharges](#)
[Customs Services](#)
[Service Capability and Rating Zones](#)
[Export Services](#)

RATING ZONES*

Location	Rating Zone	Remote Area
Bogorodsk (Nizhny Novgorod Region)	4	
Bogotol (Krasnoyarsk Territory)	16	✓
Bolkhov (Orel Region)	2	✓
Bologoe (Tver Region)	2	✓
Bolshoe Pokrovskoe (Naro-Fominsky distr., Moscow Region)	1	
Bolshoe Svinorye (Naro-Fominsky distr., Moscow Region)	1	
Bolshoy Kamen (Primorye Territory)	18	
Bor (Nizhniy Novgorod Region)	4	
Bor (Volkhovskiy distr., Leningrad Region)	3	✓
Borisoglebsk (Voronezh Region)	2	✓
Borodino (Krasnoyarsk Territory)	16	✓
Borovichi (Novgorod Region)	5	✓
Borovsk (Kaluga Region)	2	
Botakovo (Naro-Fominsky distr., Moscow Region)	1	
Bratsk (Irkutsk Region)	17	
Bronnitsy (Moscow Region)	1	✓
Bryansk (Bryansk Region)	2	
Bugulma (Republic of Tatarstan)	4	
Buguruslan (Orenburg Region)	7	✓
Burtsevo (Leninskiy distr., Moscow Region)	1	
Burtsevo (Naro-Fominsky distr., Moscow Region)	1	
Butovo (Moscow)	1	
Buy (Kostroma Region)	2	✓
Buzuluk (Orenburg Region)	12	✓
Bylovo (Podolskiy distr., Moscow Region)	1	✓
Chapaevsk (Samara Region)	7	✓
Chaplygin (Lipetsk Region)	2	✓
Chaykovskiy (Perm Region)	13	✓
Chebarkul (Chelya binsk Region)	13	
Cheboksary (Chuvash Republic)	4	
Chekhov (Moscow Region)	1	
Chelyabinsk (Chelyabinsk Region)	13	
Cherepovets (Vologda Region)	2	
Cherepovo (Leninskiy distr., Moscow Region)	1	
Cherkessk (Karachayevo-Circassian Republic)	11	✓
Chernogorsk (Republic of Khakassia)	16	
Chernomorskiy (Krasnodar Territory)	8	✓
Chistopol (Republic of Tatarstan)	4	✓
Chita (Trans-Baikal Territory)	17	
Chudovo (Novgorod Region)	5	✓
Chufarovo (Ulyanovsk Region)	9	✓
Chusovoy (Perm Territory)	13	✓
Dagomys (Krasnodar Territory)	11	
Dankov (Lipetsk Region)	2	✓
Davlekanovo (Republic of Bashkortostan)	12	✓
Davydkovo (Naro-Fominsky distr., Moscow Region)	1	
Davydovo (Podolskiy distr., Moscow Region)	1	

Location	Rating Zone	Remote Area
Dedovsk (Moscow Region)	1	
Demyanovo (Klin distr., Moscow Region)	1	
Desna (Leninskiy distr., Moscow Region)	1	
Desnogorsk (Smolensk Region)	2	✓
Devyatskoe (Podolskiy distr., Moscow Region)	1	
Dimitrovgrad (Ulyanovsk Region)	9	✓
Divnogorsk (Krasnoyarsk Territory)	16	
Dmitrov (Moscow Region)	1	
Dmitrovka (Moscow)	1	✓
Dolgoprudniy (Moscow Region)	1	
Domodedovo (Moscow Region)	1	
Donetsk (Rostov-on-Don Region)	8	
Donskoy (Tula Region)	2	✓
Donskoy (Rostov-on-Don Region)	8	
Dubna (Moscow Region)	1	
Dubrovka (Moscow Region)	1	
Dudkino (Leninskiy distr., Moscow Region)	1	
Dyatkovo (Bryansk Region)	2	✓
Dyurtyuli (Republic of Bashkortostan)	12	✓
Dzerzhinsk (Irkutsk Region)	17	
Dzerzhinsk (Nizhniy Novgorod Region)	4	
Dzerzhinskiy (Moscow Region)	1	
Efremov (Tula Region)	2	✓
Egoryevsk (Moscow Region)	1	
Ekaterinburg (Sverdlovsk Region)	13	
Elabuga (Republic of Tatarstan)	4	
Elektrogorsk (Moscow Region)	1	✓
Elektrostal (Moscow Region)	1	
Elektrougli (Moscow Region)	1	
Elets (Lipetskaya Region)	2	✓
Elista (Republic of Kalmykia)	8	✓
Elizarovo (Naro-Fominsky distr., Moscow Region)	1	
Emelyanovo (Krasnoyarsk Territory)	16	
Emelyanovo (Vologda Region)	2	
Enem (Krasnodar Territory)	8	
Engels (Saratov Region)	9	
Eniseysk (Krasnoyarsk Territory)	16	✓
Ermolino (Kaluga Region)	2	
Essentuki (Stavropol Territory)	11	
Evseevo (Leninskiy distr., Moscow Region)	1	
Eysk (Krasnodar Territory)	8	
Filimonki (Leninskiy distr., Moscow Region)	1	
Filino (Podolskiy distr., Moscow Region)	1	
Fokino (Primorye Territory)	18	
Fokino (Bryansk Region)	2	✓
Fominskoe (Naro-Fominsky distr., Moscow Region)	1	
Frolovo (Volgograd Region)	9	✓

* Service capability includes large settlements only. For more information please contact your nearest DHL Express office.
 ✓ For remote area locations an additional tariff is applied.

ZONES AND RATES

[Connecting Your World](#)
[Sustainability](#)
[Service Offering](#)
[How to Ship with DHL Express](#)
[Digitalization](#)
[▶ Zones and Rates](#)
[Calculate the Price of Your Shipment](#)
[Optional Services](#)
[Surcharges](#)
[Customs Services](#)
[Service Capability and Rating Zones](#)
[Export Services](#)

RATING ZONES*

Location	Rating Zone	Remote Area
Fryazino (Moscow Region)	1	
Gagarin (Smolensk Region)	2	✓
Gatchina (Leningrad Region)	3	
Gavrilov-Yam (Yaroslavl Region)	2	✓
Gay (Orenburg Region)	12	✓
Gazoprovod (Moscow Region)	1	
Gelendzhik (Krasnodar Territory)	8	
Georgievsk (Stavropol Territory)	11	✓
Glazov (Udmurtian Republic)	4	✓
Glazunovka (Orel Region)	2	✓
Golenishchevo (Leninskiy distr., Moscow Region)	1	
Golitsyno (Moscow Region)	1	✓
Golokhvastovo (Naro-Fominsky distr., Moscow Region)	1	✓
Golokhvastovo (Moscow)	1	✓
Goluboy Zaliv (Novosibirsk Region)	15	
Gorchakovo (Moscow)	1	
Gorelovo (St. Petersburg)	3	
Gorno-Altaysk (Republic of Altai)	15	✓
Gorodets (Nizhny Novgorod Region)	4	
Gorodishche (Leninskiy distr., Moscow Region)	1	
Gorodishche (Tver Region)	2	✓
Gorodishche (Voskresenskiy distr., Moscow Region)	1	
Gorohovets (Vladimir Region)	4	✓
Gorskaya (St. Petersburg)	3	
Goryachiy Klyuch (Krasnodar Territory)	8	✓
GOSNIIGA (Moscow Region)	1	
Govorovo (Moscow Region)	1	
Grayvoron (Belgorod Region)	2	✓
Grozniy (Chechen Republic)	11	
Gryazi (Lipetsk Region)	2	✓
Gryazovets (Vologda Region)	2	✓
Gubakha (Perm Territory)	13	✓
Gubkin (Belgorod Region)	2	✓
Gubkino (Leninskiy distr., Moscow Region)	1	
Gubkinskiy (Yamal-Nenets Autonomous Area)	14	✓
Gubtsevo (Moscow Region)	1	
Gudermes (Chechen Republic)	11	
Gukovo (Rostov-on-Don Region)	8	✓
Gulkevichi (Krasnodar Territory)	8	
Gus-Khrustalnyi (Vladimir Region)	2	✓
Ilanskiy (Krasnoyarsk Territory)	16	✓
Ilskiy (Krasnodar Territory)	8	
Ilyichevka (Moscow)	1	
Ilyino (Moscow)	1	✓
Inta (Komi Republic)	10	✓
Inza (Ulyanovsk Region)	9	✓
Irbit (Sverdlovsk Region)	13	✓

Location	Rating Zone	Remote Area
Irkutsk (Irkutsk Region)	17	
Isakovo (Moscow)	1	✓
Ishimbay (Republic of Bashkortostan)	12	
Iskitim (Novosibirsk Region)	15	
Istra (Moscow Region)	1	
Ivangorod (Leningrad Region)	5	✓
Ivanovo (Podolsky distr., Moscow Region)	1	
Ivanovo (Ivanovo Region)	2	
Ivanovskoe (Naro-Fominsky distr., Moscow Region)	1	
Ivanteevka (Moscow Region)	1	
Izhevsk (Udmurtian Republic)	4	
Izluchinsk (Khanty-Mansi Autonomous Area – Yugra)	14	
Izobilnyy (Stavropol Territory)	11	✓
Izvarino (Moscow Region)	1	
Izvarinsky shkoly (Moscow Region)	1	
Kachkanar (Sverdlovsk Region)	13	✓
Kadnikov (Vologda Region)	2	✓
Kalashnikovo (Tver Region)	2	✓
Kaluga (Kaluga Region)	2	
Kamenka (Leningrad Region)	3	
Kamenka (Leninskiy distr., Moscow Region)	1	
Kamenka (Moscow)	1	✓
Kamenka (Naro-Fominsky distr., Moscow Region)	1	
Kamenka (Orel Region)	2	
Kamenka (Volkhovskiy distr., Leningrad Region)	3	✓
Kamennogorsk (Leningrad Region)	5	✓
Kamensk-Shakhtinskiy (Rostov-on-Don Region)	8	
Kamensk-Uralskiy (Sverdlovsk Region)	13	
Kameshkovo (Vladimir Region)	2	✓
Kamyshin (Volograd Region)	9	✓
Kamyshlov (Sverdlovsk Region)	13	✓
Kanash (Chuvash Republic)	4	✓
Kansk (Krasnoyarsk Territory)	16	✓
Karabanovo (Noginskiy distr., Moscow Region)	1	✓
Karabulak (Republic of Ingushetia)	11	✓
Karachev (Bryansk Region)	2	✓
Karakashevo (Leninskiy distr., Moscow Region)	1	
Karpinsk (Sverdlovsk Region)	13	✓
Kartmazovo (Leninsky distr., Moscow Region)	1	
Kashira (Moscow Region)	1	✓
Kasimov (Ryazan Region)	2	✓
Kasli (Chelyabinsk Region)	13	
Kaspiysk (Republic of Dagestan)	11	
Kazan (Republic of Tatarstan)	4	
Kemerovo (Kemerovo Region)	16	
Khabarovsk (Khabarovsk Territory)	18	
Khadyzhensk (Krasnodar Territory)	8	✓

* Service capability includes large settlements only. For more information please contact your nearest DHL Express office.
 ✓ For remote area locations an additional tariff is applied.

ZONES AND RATES

[Connecting Your World](#)
[Sustainability](#)
[Service Offering](#)
[How to Ship with DHL Express](#)
[Digitalization](#)
[▶ Zones and Rates](#)
[Calculate the Price of Your Shipment](#)
[Optional Services](#)
[Surcharges](#)
[Customs Services](#)
[Service Capability and Rating Zones](#)
[Export Services](#)

RATING ZONES*

Location	Rating Zone	Remote Area
Khanty-Mansiysk (Khanty-Mansi Autonomous Area – Yugra)	14	
Kharyino (Leninskiy distr., Moscow Region)	1	
Khatminki (Naro-Fominsky distr., Moscow Region)	1	
Khimki (Moscow Region)	1	
Khomutovo (Balashikhinsky distr., Moscow Region)	1	
Khomutovo (Stupinskiy distr., Moscow Region)	1	✓
Khotkovo (Moscow Region)	1	✓
Khotynets (Orel Region)	2	✓
Kinel (Samara Region)	7	
Kineshma (Ivanovo Region)	2	✓
Kingisepp (Leningrad Region)	5	✓
Kirillov (Vologda Region)	2	✓
Kirishi (Leningrad Region)	3	✓
Kirov (Kirov Region)	4	
Kirov (Kaluga Region)	2	✓
Kirovgrad (Sverdlovsk Region)	13	✓
Kirovo-Chepetsk (Kirov Region)	4	
Kirovsk (Murmansk Region)	10	✓
Kirovsk (Kirovsk distr., Leningrad Region)	3	✓
Kirpichnogo Zavoda (Klin distr., Moscow Region)	1	✓
Kirpichnogo Zavoda (Naro-Fominsky distr., Moscow Region)	1	
Kirpichnyy (Sverdlovsk Region)	13	
Kiselevka (Leninskiy distr., Moscow Region)	1	
Kislovodsk (Stavropol Territory)	11	
Klimovka (Moscow)	1	✓
Klimovsk (Moscow Region)	1	
Klin (Moscow Region)	1	
Klintsy (Bryansk Region)	2	✓
Klokovo (Moscow)	1	
Knutovo (Leninskiy distr., Moscow Region)	1	
Kogalym (Khanty-Mansi Autonomous Area – Yugra)	14	✓
Kokhma (Ivanovo Region)	2	
Kola (Murmansk Region)	10	
Kolchugino (Vladimir Region)	2	✓
Kolomna (Moscow Region)	1	
Kolotilovo (Podolskiy distr., Moscow Region)	1	✓
Kolpino (St. Petersburg)	3	
Kommunar (Leningrad Region)	3	
Kommunarka (Moscow Region)	1	
Komsomolskiy (Republic of Mordovia)	4	✓
Komsomolsk-na-Amure (Khabarovsk Territory)	18	
Konakovo (Tver Region)	2	✓
Konakovo (Moscow)	1	✓
Koncheevo (Leninskiy distr., Moscow Region)	1	
Kondopoga (Republic of Karelia)	5	✓
Kondrovo (Kaluga Region)	2	
Konyushkovo (Naro-Fominsky distr., Moscow Region)	1	

Location	Rating Zone	Remote Area
Kopeysk (Chelyabinsk Region)	13	
Korenevo (Lyuberetsky distr., Moscow Region)	1	
Korenovsk (Krasnodar Territory)	8	✓
Korkino (Chelyabinsk Region)	13	
Korocho (Belgorod Region)	2	✓
Korolev (Moscow Region)	1	
Koryazhma (Arhangelsk Region)	10	✓
Kosino (Moscow)	1	
Kosino-Ukhtomskiy (Moscow Region)	1	
Kostishovo (Podolsky distr., Moscow Region)	1	
Kostomuksha (Republic of Karelia)	5	✓
Kostroma (Kostroma Region)	2	
Kotelniki (Moscow Region)	1	
Kotelnikovo (Gatchina distr., Leningrad Region)	3	
Kotlas (Arkhangelsk Region)	10	✓
Kotlovsk (Tambov Region)	2	
Kovdor (Murmansk Region)	10	✓
Kovrov (Vladimir Region)	2	✓
Kozelsk (Kaluga Region)	2	✓
Kozhukhovo (Moscow)	1	
Kozlovka (Chuvash Republic)	4	✓
Kozlovo (Kaluga Region)	2	
Kozmodemyansk (Republic of Mari El)	4	✓
Krasnaya Gora (Tver Region)	2	
Krasnaya Pakhra (Podolskiy distr., Moscow Region)	1	✓
Krasnaya Polyana (Krasnodar Territory)	11	✓
Krasnaya Volya (Krasnodar Territory)	11	✓
Krasnoarmeysk (Moscow Region)	1	✓
Krasnoarmeyskiy (Krasnodar Territory)	8	
Krasnodar (Krasnodar Territory)	8	
Krasnoe (Podolsky distr., Moscow Region)	1	✓
Krasnoe Selo (St. Petersburg)	3	
Krasnogorsk (Moscow Region)	1	
Krasnokamsk (Perm Territory)	13	
Krasnoselskiy (Krasnodar Territory)	8	
Krasnoturinsk (Sverdlovsk Region)	13	✓
Krasnoufimsk (Sverdlovsk Region)	13	✓
Krasnouralsk (Sverdlovsk Region)	13	✓
Krasnoyarsk (Krasnoyarsk Territory)	16	
Krasnozavodsk (Moscow Region)	1	✓
Krasnoznamenensk (Moscow Region)	1	✓
Krasny Sulin (Rostov-on-Don Region)	8	
Krasnye Gorki (Naro-Fominsky distr., Moscow Region)	1	
Krasnyy (Krasnodar Territory)	8	
Krasnyy Bor (Ulyanovsk Region)	9	✓
Krekshino (Naro-Fominsky distr., Moscow Region)	1	
Kremenki (Ulyanovsk Region)	9	✓

* Service capability includes large settlements only. For more information please contact your nearest DHL Express office.
 ✓ For remote area locations an additional tariff is applied.

ZONES AND RATES

[Connecting Your World](#)
[Sustainability](#)
[Service Offering](#)
[How to Ship with DHL Express](#)
[Digitalization](#)
[▶ Zones and Rates](#)
[Calculate the Price of Your Shipment](#)
[Optional Services](#)
[Surcharges](#)
[Customs Services](#)
[Service Capability and Rating Zones](#)
[Export Services](#)

RATING ZONES*

Location	Rating Zone	Remote Area
Kresty (Moscow)	1	✓
Krivosheino (Naro-Fominsky distr., Moscow Region)	1	
Kromy (Orel Region)	2	✓
Kronshtadt (St. Petersburg)	3	
Kropotkin (Krasnodar Territory)	8	
Krutaya Gora (Orel Region)	2	
Krymsk (Krasnodar Territory)	8	
Kryukovo (Zelenograd, Moscow)	1	
Kstovo (Nizhniy Novgorod Region)	4	
Kubinka (Odintsovo distr., Moscow Region)	1	✓
Kukshevo (Naro-Fominsky distr., Moscow Region)	1	
Kulebaki (Nizhniy Novgorod Region)	4	✓
Kumertau (Republic of Bashkortostan)	12	✓
Kungur (Perm Territory)	13	✓
Kurchatov (Kursk Region)	2	✓
Kurgan (Kurgan Region)	14	
Kurganinsk (Krasnodar Territory)	8	✓
Kurkino (Moscow)	1	
Kurovskoe (Moscow Region)	1	✓
Kursk (Kursk Region)	2	
Kushva (Sverdlovsk Region)	13	✓
Kutuzovo (Zelenograd, Moscow)	1	
Kuvekino (Leninskiy distr., Moscow Region)	1	
Kuvshinovo (Vologda Region)	2	
Kuznetsk (Penza Region)	4	✓
Kyshtym (Chelyabinsk Region)	13	
Kyzyl (Republic of Tuva)	16	✓
Labinsk (Krasnodar Territory)	8	✓
Lakhta (St. Petersburg)	3	
Lakinsk (Vladimir Region)	2	
Langepas (Khanty-Mansi Autonomous Area – Yugra)	14	✓
Lapshinka (Leninsky distr., Moscow Region)	1	
Laptevo (Leninskiy distr., Moscow Region)	1	
Larevo (Leninskiy distr., Moscow Region)	1	
Lebedyan (Lipetsk Region)	2	✓
Lebyazhe (Ulyanovsk Region)	9	✓
Leninogorsk (Republic of Tatarstan)	4	
Leninsk-Kuznetskiy (Kemerovo Region)	16	✓
Leninskoe (Novosibirsk Region)	15	
Lermontov (Stavropol Territory)	11	
Lesosibirsk (Krasnoyarsk Territory)	16	✓
Letovo (Leninsky distr., Moscow Region)	1	
Levashovo (St. Petersburg)	3	
Lgov (Kursk Region)	2	✓
Likino-Dulevo (Moscow Region)	1	✓
Likova (Leninskiy distr., Moscow Region)	1	
Lipetsk (Lipetsk Region)	2	

Location	Rating Zone	Remote Area
Lipki (Ulyanovsk Region)	9	
Lipki (Orel Region)	2	
Lisiy Nos (St. Petersburg)	3	
Liski (Voronezh Region)	2	✓
Livadiya (Primorye Territory)	18	
Lobnya (Moscow Region)	1	
Lomonosov (St. Petersburg)	3	
Lopatino (Moscow)	1	✓
Losino-Petrovskiy (Moscow Region)	1	
Luga (Leningrad Region)	5	
Lugovoy (Balashikhinsky distr., Moscow Region)	1	
Lugovoy (Dmitrovsky distr., Moscow Region)	1	✓
Lukhovitsy (Moscow Region)	1	
Lukino (Leninskiy distr., Moscow Region)	1	
Lukino (Naro-Fominsky distr., Moscow Region)	1	✓
Luza (Kirov Region)	4	
Luzhki (Moscow)	1	✓
Luzhki (Ramensky distr., Moscow Region)	1	
Lyskovo (Nizhniy Novgorod Region)	4	✓
Lysva (Perm Territory)	13	✓
Lytkarino (Moscow Region)	1	
Lyubertsy (Moscow Region)	1	
Lyudinovo (Kaluga Region)	2	✓
Magas (Republic of Ingushetia)	11	✓
Magnitogorsk (Chelyabinsk Region)	14	
Makarovo (Noginsky distr., Moscow Region)	1	
Makhachkala (Republic of Dagestan)	11	
Maleevka (Naro-Fominsky distr., Moscow Region)	1	✓
Malgobek (Republic of Ingushetia)	11	✓
Malino (Zelenograd, Moscow)	1	
Maloarkhangelsk (Orel Region)	2	✓
Maloyaroslavets (Kaluga Region)	2	
Malygino (Podolskiy distr., Moscow Region)	1	✓
Mamadysh (Republic of Tatarstan)	4	✓
Mamonovo (Leninskiy distr., Moscow Region)	1	
Mamyri (Moscow Region)	1	
Marfino (Naro-Fominsky distr., Moscow Region)	1	
Marks (Saratov Region)	9	✓
Martyush (Sverdlovsk Region)	13	✓
Marushkino (Naro-Fominsky distr., Moscow Region)	1	
Maryino (Noginsky distr., Moscow Region)	1	
Maykop (Republic of Adygeya)	8	
Mayskiy (Kabardino-Balkariya Region)	11	✓
Mayskiy (Vologda Region)	2	
Medvedevo (Orel Region)	2	
Medvezhegorsk (Republic of Karelia)	5	✓
Medyn (Kaluga Region)	2	✓

* Service capability includes large settlements only. For more information please contact your nearest DHL Express office.
 ✓ For remote area locations an additional tariff is applied.

ZONES AND RATES

[Connecting Your World](#)
[Sustainability](#)
[Service Offering](#)
[How to Ship with DHL Express](#)
[Digitalization](#)
[▶ Zones and Rates](#)
[Calculate the Price of Your Shipment](#)
[Optional Services](#)
[Surcharges](#)
[Customs Services](#)
[Service Capability and Rating Zones](#)
[Export Services](#)

RATING ZONES*

Location	Rating Zone	Remote Area
Region (Khanty-Mansi Autonomous Area – Yugra)	14	
Meleuz (Republic of Bashkortostan)	12	✓
Melioratorov (Vologda Region)	2	
Mendeleevsk (Republic of Tatarstan)	4	
Meshchovsk (Kaluga Region)	2	✓
Meshkovo (Leninskiy distr., Moscow Region)	1	
Metallostroy (St. Petersburg)	3	
Mezhdurechensk (Kemerovo Region)	16	✓
Miass (Chelyabinsk Region)	13	✓
Michurinsk (Tambov Region)	2	✓
Mikhaylovka (Orel Region)	2	
Mikhaylovsk (Stavropol Territory)	11	
Millerovo (Rostov-on-Don Region)	8	✓
Miloradovo (Leninskiy distr., Moscow Region)	1	
Milyukovo (Naro-Fominsky distr., Moscow Region)	1	
Mineralnye Vody (Stavropol Territory)	11	
Minusinsk (Krasnoyarsk Territory)	16	
Minvneshtorga (Leninskiy distr., Moscow Region)	1	
Mirniy (Tikhoretsk distr., Krasnodar Territory)	8	✓
Mirnyy (Ramensky distr., Moscow Region)	1	✓
Mirnyy (Tver Region)	2	✓
Mitino (Moscow)	1	
Molodtsy (Podolsky distr., Moscow Region)	1	
Monchegorsk (Murmansk Region)	10	✓
Mosalsk (Kaluga Region)	2	✓
Moscow	1	
Moskovskiy (Moscow Region)	1	
Mosrentgen (Moscow Region)	1	
Mostovskoe (Podolsky distr., Moscow Region)	1	
Mozhaysk (Moscow Region)	1	✓
Mozhga (Udmurtian Republic)	4	✓
Mtsensk (Orel Region)	2	✓
Muravlenko (Yamal-Nenets Autonomous Area)	14	✓
Murmansk (Murmansk Region)	10	
Murmashi (Murmansk Region)	10	
Murom (Vladimir Region)	4	✓
Murygino (Smolensk Region)	2	✓
Myski (Kemerovo Region)	16	✓
Mytischi (Moscow Region)	1	
Naberezhnye Chelny (Republic of Tatarstan)	4	
Nadym (Yamal-Nenets Autonomous Area)	14	✓
Nagorniy (Yaroslavl Region)	2	
Nakhodka (Primorye Territory)	18	
Nalchik (Kabardino-Balkarian Republic)	11	✓
Naro-Fominsk (Moscow Region)	1	
Naryshkino (Orel Region)	2	
Nastasyino (Naro-Fominsky distr., Moscow Region)	1	

Location	Rating Zone	Remote Area
Navashino (Nizhniy Novgorod Region)	4	✓
Nazarovo (Krasnoyarsk Territory)	16	✓
Nazaryevo (Moscow)	1	
Nazran (Republic of Ingushetia)	11	✓
Neftegorsk (Samara Region)	7	✓
Neftekamsk (Republic of Bashkortostan)	12	✓
Neftekumsk (Stavropol Territory)	11	✓
Nefteyugansk (Khanty-Mansi Autonomous Area – Yugra)	14	✓
Nekrasovka (Moscow)	1	
Nerekhta (Kostroma Region)	2	✓
Nevyansk (Sverdlovsk Region)	13	✓
Nikolaevka (Voronezh Region)	2	✓
Nikolo-Khovanskoe (Leninsky distr., Moscow Region)	1	
Nikolskoe (Voronezh Region)	2	✓
Nikolskoe (Gatchina distr., Leningrad Region)	3	
Nikolskoe (Tosno distr., Leningrad Region)	3	
Nikolyskoe (Leninskiy distr., Moscow Region)	1	
Nikolyskoe (Podolsky distr., Moscow Region)	1	
Nikonovo (Podolsky distr., Moscow Region)	1	
Nikulskoe (Podolsky distr., Moscow Region)	1	
Nizhnee Valuevo (Leninskiy distr., Moscow Region)	1	
Nizhnekamsk (Republic of Tatarstan)	4	
Nizhneartovsk (Khanty-Mansi Autonomous Area – Yugra)	14	
Nizhniy Novgorod (Nizhniy Novgorod Region)	4	
Nizhniy Tagil (Sverdlovsk Region)	13	
Nizhnaya Salda (Sverdlovsk Region)	13	
Nizhnaya Tura (Sverdlovsk Region)	13	✓
Noginsk (Moscow Region)	1	
Novaya Ladoga (Leningrad Region)	3	✓
Novaya Lyalya (Sverdlovsk Region)	13	✓
Novinki (Leninskiy distr., Moscow Region)	1	
Novoaitaysk (Altai Territory)	15	
Novobutakovo (Moscow)	1	
Novocheboksarsk (Chuvash Republic)	4	
Novocherkassk (Rostov-on-Don Region)	8	
Novodvinsk (Arkhangelsk Region)	10	
Novokosino (Moscow)	1	
Novokubansk (Krasnodar Territory)	8	
Novokuybyshevsk (Samara Region)	7	
Novokuznetsk (Kemerovo Region)	16	
Novomalino (Moscow)	1	
Novomikhaylovskiy (Krasnodar Territory)	8	✓
Novomoskovsk (Tula Region)	2	✓
Novoperedelkino (Moscow)	1	
Novorossiysk (Krasnodar Territory)	8	
Novoselki (Podolsky distr., Moscow Region)	1	✓
Novoshakhtinsk (Rostov-on-Don Region)	8	✓

* Service capability includes large settlements only. For more information please contact your nearest DHL Express office.
 ✓ For remote area locations an additional tariff is applied.

ZONES AND RATES

[Connecting Your World](#)
[Sustainability](#)
[Service Offering](#)
[How to Ship with DHL Express](#)
[Digitalization](#)
[▶ Zones and Rates](#)
[Calculate the Price of Your Shipment](#)
[Optional Services](#)
[Surcharges](#)
[Customs Services](#)
[Service Capability and Rating Zones](#)
[Export Services](#)

RATING ZONES*

Location	Rating Zone	Remote Area
Novosibirsk (Novosibirsk Region)	15	
Novosil (Orel Region)	2	✓
Novotroitsk (Orenburg Region)	12	
Novoulyanovsk (Ulyanovsk Region)	9	
Novouralsk (Sverdlovsk Region)	13	✓
Novovoronezh (Voronezh Region)	2	✓
Novozavidovskiy (Tver Region)	2	✓
Noviy (Egoryevsk distr., Moscow Region)	1	
Noviy (Krasnogorsk distr., Moscow Region)	1	
Noviy Urengoy (Yamal-Nenets Autonomous Area)	14	
Novyy (Krasnodar Reg)	8	
Novyy Gorodok (Odintsovsky distr., Moscow Region)	1	✓
Novyy Gorodok (Shchelkovsky distr., Moscow Region)	1	
Novyy Oskol (Belgorod Region)	2	✓
Noyabrsk (Yamal-Nenets Autonomous Area)	14	
Nyagan (Khanty-Mansi Autonomous Area – Yugra)	14	✓
Ob (Novosibirsk Region)	15	
Obninsk (Kaluga Region)	2	
Odintsovo (Odintsovo distr., Moscow Region)	1	
Odintsovo (Domodedovsky distr., Moscow Region)	1	
Oktyabrsk (Samara Region)	7	
Oktyabrskiy (Republic of Bashkortostan)	12	✓
Oktyabrskiy (Istrinsky distr., Moscow Region)	1	✓
Oktyabrskiy (Odintsovo distr., Moscow Region)	1	✓
Oktyabrskiy (Orel Region)	2	
Oktyabrskoe (Ulyanovsk Region)	9	✓
Oktyabrskiy (Lyubertsy distr., Moscow Region)	1	
Oktyabrskiy (Krasnodar Territory)	8	
Olenegorsk (Murmansk Region)	10	✓
Olgino (St. Petersburg)	3	
Olonets (Republic of Karelia)	5	✓
Omsk (Omsk Region)	15	
Onega (Arkhangelsk Region)	10	✓
Onokhoy (Republic of Buryatia)	17	
Orehovo-Zuevo (Moscow Region)	1	
Orel (Orel Region)	2	
Orenburg (Orenburg Region)	12	
Orlovskiy (Rostov-on-Don Region)	8	✓
Orsk (Orenburg Region)	12	
Osinki (Solnechnogorsky distr., Moscow Region)	1	✓
Osinniki (Kemerovo Region)	16	
Ostafyevo (Podolsky distr., Moscow Region)	1	
Ostrogzhsk (Voronezh Region)	2	✓
Ostrov (Leninsky distr., Moscow Region)	1	
Otradnoe (Bryansk Region)	2	
Otradnoe (Kirovsk distr., Leningrad Region)	3	
Otradnoe (Krasnogorsky distr., Moscow Region)	1	

Location	Rating Zone	Remote Area
Otradnoe (Voronezh Region)	2	
Otradniy (Samara Region)	7	
Ozernyy (Naro-Fominsky distr., Moscow Region)	1	
Ozersk (Chelyabinsk Region)	13	
Oznobishino (Podolsky distr., Moscow Region)	1	
Pargolovo (St. Petersburg)	3	
Partizansk (Primorsky Region)	18	✓
Pavlovo (Nizhniy Novgorod Region)	4	
Pavlovsk (St. Petersburg)	3	
Pavlovsk (Voronezh Region)	2	✓
Pavlovskiy (Temryuk distr., Krasnodar Territory)	8	✓
Pavlovskiy Posad (Moscow Region)	1	✓
Pechora (Komi Republic)	10	✓
Pechory (Pskov Region)	5	✓
Penino (Leninsky distr., Moscow Region)	1	
Penza (Penza Region)	4	
Pereslavl-Zalesskiy (Yaroslavl Region)	2	✓
Peresvet (Moscow Region)	1	✓
Perm (Perm Territory)	13	
Pervomayka (Ramensky distr., Moscow Region)	1	
Pervomayskiy (Istrinsky distr., Moscow Region)	1	✓
Pervomayskiy (Mineralovodskiy distr., Stavropol Territory)	11	
Pervomayskiy (Tula Region)	2	
Pervomayskoe (Naro-Fominsky distr., Moscow Region)	1	
Pervouralsk (Sverdlovsk Region)	13	
Pesochniy (St. Petersburg)	3	
Pesye (Podolsky distr., Moscow Region)	1	
Peterhof (St. Petersburg)	3	
Petroslavyanka (St. Petersburg)	3	
Petrozavodsk (Republic of Karelia)	5	
Petushki (Vladimir Region)	2	✓
Pionerskiy (Istrinsky distr., Moscow Region)	1	✓
Pionerskiy (Vologda Region)	2	✓
Piskovo (Leninsky distr., Moscow Region)	1	
Pitkyaranta (Republic of Karelia)	5	✓
Pochinki (Podolsky distr., Moscow Region)	1	
Pochinok (Vologda Region)	2	
Podolsk (Moscow Region)	1	
Podosinki (Podolsky distr., Moscow Region)	1	✓
Pogar (Bryansk Region)	2	✓
Pokhvistnevo (Samara Region)	7	✓
Pokrov (Klin distr., Moscow Region)	1	✓
Pokrov (Moscow Region)	1	
Pokrovskoe (Odintsovsky distr., Moscow Region)	1	✓
Pokrovskoe (Vologda Region)	2	✓
Polevskoy (Sverdlovsk Region)	13	
Polyany (Podolsky distr., Moscow Region)	1	✓

* Service capability includes large settlements only. For more information please contact your nearest DHL Express office.
 ✓ For remote area locations an additional tariff is applied.

ZONES AND RATES

[Connecting Your World](#)
[Sustainability](#)
[Service Offering](#)
[How to Ship with DHL Express](#)
[Digitalization](#)
[▶ Zones and Rates](#)
[Calculate the Price of Your Shipment](#)
[Optional Services](#)
[Surcharges](#)
[Customs Services](#)
[Service Capability and Rating Zones](#)
[Export Services](#)

RATING ZONES*

Location	Rating Zone	Remote Area
Pontonniy (St. Petersburg)	3	
Popovka (Moscow)	1	
Postnikovo (Naro-Fominsky distr., Moscow Region)	1	
Povorino (Voronezh Region)	2	✓
Primorsk (Leningrad Region)	5	✓
Primorskiy (Temryuk distr., Krasnodar Territory)	8	
Privolzhsk (Ivanovo Region)	2	✓
Progress (Temryuk distr., Krasnodar Territory)	8	
Prokhladny (Kabardino-Balkarian Republic)	11	✓
Prokhorovka (Belgorod Region)	2	✓
Prokopyevsk (Kemerovo Region)	16	
Prokshino (Leninsky distr., Moscow Region)	1	
Proletarsk (Rostov-on-Don Region)	8	✓
Protvino (Moscow Region)	1	✓
Pskov (Pskov Region)	5	
Ptichnoe (Naro-Fominsky distr., Moscow Region)	1	
Puchkovo (Naro-Fominsky distr., Moscow Region)	1	
Pugachev (Saratov Region)	9	✓
Pushchino (Serpukhovskoy distr., Moscow Region)	1	
Pushkin (St. Petersburg)	3	
Pushkino (Moscow Region)	1	
Pushkino (Ramenskiy distr., Moscow Region)	1	✓
Pyatigorsk (Stavropol Territory)	11	
Pyatovskoe (Naro-Fominsky distr., Moscow Region)	1	
Pykchevo (Leninskiy distr., Moscow Region)	1	
Pykhtino (Leninskiy distr., Moscow Region)	1	
Pyt-Yakh (Khanty-Mansi Autonomous Area – Yugra)	14	✓
Radchenko (Tver Region)	2	
Radiotsentr (Leninskiy distr., Moscow Region)	1	
Raduzhniy (Khanty-Mansi Autonomous Area – Yugra)	14	✓
Raduzhniy (Vladimir Region)	2	
Raevo (Podolskiy distr., Moscow Region)	1	✓
Ramenskoe (Moscow Region)	1	
Rasskazovka (Leninskiy distr., Moscow Region)	1	
Rasskazovo (Tambov Region)	2	
Rastoropovo (Leninskiy distr., Moscow Region)	1	
Razdolnoe (Novosibirsk Region)	15	
Razliv (St. Petersburg)	3	
Redkino (Tver Region)	2	
Repino (St. Petersburg)	3	
Reutov (Moscow Region)	1	
Revda (Sverdlovsk Region)	13	
Rezh (Sverdlovsk Region)	13	✓
Rodniki (Ivanovo Region)	2	✓
Rogozinino (Naro-Fominsky distr., Moscow Region)	1	
Roshchinskiy (Omsk Region)	15	✓
Roslavl (Smolensk Region)	2	✓

Location	Rating Zone	Remote Area
Rostov (Yaroslavl Region)	2	✓
Rostov-on-Don (Rostov-on-Don Region)	8	
Rozhdestvenno (Moscow)	1	✓
Rozhnovo (Moscow)	1	
Rublevo (Moscow)	1	
Rubtsovsk (Altai Territory)	15	✓
Rumyantsevo (Moscow Region)	1	
Rusino (Podolskiy distr., Moscow Region)	1	
Ruzaevka (Republic of Mordovia)	4	
Ryazan (Ryazan Region)	2	
Ryazhsk (Ryazan Region)	2	✓
Rybatskoe (St. Petersburg)	3	
Rybino (Podolskiy distr., Moscow Region)	1	
Rybinsk (Yaroslavl Region)	2	✓
Rybnoe (Ryazan Region)	2	
Rybnoe (Dmitrovskiy distr., Moscow Region)	1	✓
Rzhev (Tver Region)	2	✓
Safonovo (Smolensk Region)	2	✓
Salaryevo (Moscow Region)	1	
Salavat (Republic of Bashkortostan)	12	
Salekhard (Yamal-Nenets Autonomous Area)	14	✓
Salsk (Rostov-on-Don Region)	8	✓
Samara (Samara Region)	7	
Saperniy (St. Petersburg)	3	
Saransk (Republic of Mordovia)	4	
Sarapul (Udmurtian Republic)	4	✓
Saratov (Saratov Region)	9	
Sarov (Nizhniy Novgorod Region)	4	✓
Sasovo (Ryazan Region)	2	✓
Sayanogorsk (Republic of Khakassia)	16	✓
Sebez (Pskov Region)	5	✓
Segezha (Republic of Karelia)	5	✓
Selenginsk (Republic of Buryatia)	17	✓
Seltso (Bryansk Region)	2	✓
Semenov (Nizhny Novgorod Region)	4	✓
Semiluki (Voronezh Region)	2	
Sengiley (Ulyanovsk Region)	9	✓
Sergiev Posad (Moscow Region)	1	
Serov (Sverdlovsk Region)	13	✓
Serpukhov (Moscow Region)	1	
Sertolovo (Leningrad Region)	3	
Sestroretsk (St. Petersburg)	3	
Severny (Belgorod Region)	2	
Severniy (Moscow)	1	
Severodvinsk (Arkhangelsk Region)	10	
Severomorsk (Murmansk Region)	10	✓
Severouralsk (Sverdlovsk Region)	13	✓

* Service capability includes large settlements only. For more information please contact your nearest DHL Express office.
 ✓ For remote area locations an additional tariff is applied.

ZONES AND RATES

[Connecting Your World](#)
[Sustainability](#)
[Service Offering](#)
[How to Ship with DHL Express](#)
[Digitalization](#)
[▶ Zones and Rates](#)
[Calculate the Price of Your Shipment](#)
[Optional Services](#)
[Surcharges](#)
[Customs Services](#)
[Service Capability and Rating Zones](#)
[Export Services](#)

RATING ZONES*

Location	Rating Zone	Remote Area
Shablykino (Orel Region)	2	✓
Shadrinsk (Kurgan Region)	14	✓
Shakhovo (Podolsky distr., Moscow Region)	1	✓
Shakhty (Rostov-on-Don Region)	8	
Sharapovo (Naro-Fominsk distr., Moscow Region)	1	
Sharya (Kostroma Region)	2	✓
Sharypovo (Krasnoyarsk Territory)	16	✓
Shatura (Moscow Region)	1	✓
Shchapovo (Podolsky distr., Moscow Region)	1	
Schekino (Tula Region)	2	
Schelkovo (Moscow Region)	1	
Scherbinka (Moscow Region)	1	
Shchuche (Orel Region)	2	
Shebekino (Belgorod Region)	2	
Shelbutovo (Leninskiy distr., Moscow Region)	1	
Shelekhov (Irkutsk Region)	17	
Shikhany (Saratov Region)	9	✓
Shiryaevo (Moscow)	1	
Shlisselburg (Leningrad Region)	3	✓
Shudayag (Komi Republic)	10	
Shumerlya (Chuvash Republic)	4	✓
Shushary (St. Petersburg)	3	
Shuya (Ivanovo Region)	2	
Sibay (Republic of Bashkortostan)	14	✓
Skopin (Ryazan Region)	2	✓
Stantsy (Leningrad Region)	5	✓
Slavnyy (Tver Region)	2	✓
Slavyansk-na-Kubani (Krasnodar Territory)	8	
Slobodskoy (Kirov Region)	4	✓
Slyudyanka (Irkutsk Region)	17	✓
Smolensk (Smolensk Region)	2	
Smyshlyaevka (Ulyanovsk Region)	9	✓
Smyshlyaevka (Samara Region)	7	
Snezhinsk (Chelyabinsk Region)	13	✓
Sobinka (Vladimir Region)	2	
Sochi (Krasnodar Territory)	11	
Sofyino (Podolsky distr., Moscow Region)	1	✓
Sokol (Vologda Region)	2	
Sokolovo (Naro-Fominsky distr., Moscow Region)	1	
Solikamsk (Perm Territory)	13	
Sol-Iletsk (Orenburg Region)	12	✓
Solnechniy (Voronezh Region)	2	
Solnechnoe (St. Petersburg)	3	
Solnechnogorsk (Moscow Region)	1	✓
Solnechnyy (Khanty-Mansi Autonomous Area – Yugra)	14	
Solntsevo (Moscow)	1	
Sorochinsk (Orenburg Region)	12	✓

Location	Rating Zone	Remote Area
Sortavala (Republic of Karelia)	5	✓
Sosenki (Moscow Region)	1	
Sosnogorsk (Komi Republic)	10	
Sosnovka (Vologda Region)	2	
Sosnoviy Bor (Leningrad Region)	5	
Sosnovy Bor (Republic of Buryatia)	17	
Sosnovyy Bor (Leninskiy distr., Moscow Region)	1	
Sovetskaya Gavan (Khabarovsk Territory)	18	
Sovetskiy (Leningrad Region)	5	
Sovetskiy (Khanty-Mansi Autonomous Area – Yugra)	14	✓
Sredneuralsk (Sverdlovsk Region)	13	
St. Petersburg	3	
Stanislavl (Leninskiy distr., Moscow Region)	1	
Staraya Kupavna (Moscow Region)	1	
Staritsa (Tver Region)	2	✓
Starodub (Bryansk Region)	2	✓
Staroselye (Leninskiy distr., Moscow Region)	1	
Starosyrovo (Podolsky distr., Moscow Region)	1	
Stariy Oskol (Belgorod Region)	2	✓
Stavropol (Stavropol Territory)	11	
Stepnoy (Krasnodar Territory)	8	
Sterlitamak (Republic of Bashkortostan)	12	
Stolbovo (Leninsky distr., Moscow Region)	1	
Stradan (Podolskiy distr., Moscow Region)	1	✓
Strezhevoy (Tomsk Region)	14	✓
Stroitel (Arkhangelsk Region)	10	
Stroitel (Tambov Region)	2	
Stroykeramika (Samara Region)	7	
Studentsy (Podolsky distr., Moscow Region)	1	
Stupino (Moscow Region)	1	
Sudogda (Vladimir Region)	2	
Sudzha (Kursk Region)	2	✓
Sukhinichi (Kaluga Region)	2	✓
Sukhodol (Samara Region)	7	✓
Sukhoy Log (Sverdlovsk Region)	13	✓
Surazh (Bryansk Region)	2	✓
Surgut (Khanty-Mansi Autonomous Area – Yugra)	14	
Surgut (Samara Reg)	7	✓
Suvorov (Tula Region)	2	✓
Suzdal (Vladimir Region)	2	
Svetlyy (Irkutsk Reg)	17	
Svetlyy (Noginsky distr., Moscow Region)	1	
Svetogorsk (Leningrad Region)	5	✓
Syktyvkar (Komi Republic)	10	
Sysert (Sverdlovsk Region)	13	✓
Syzran (Samara Region)	7	
Taganrog (Rostov-on-Don Region)	8	

* Service capability includes large settlements only. For more information please contact your nearest DHL Express office.
 ✓ For remote area locations an additional tariff is applied.

ZONES AND RATES

[Connecting Your World](#)
[Sustainability](#)
[Service Offering](#)
[How to Ship with DHL Express](#)
[Digitalization](#)
[▶ Zones and Rates](#)
[Calculate the Price of Your Shipment](#)
[Optional Services](#)
[Surcharges](#)
[Customs Services](#)
[Service Capability and Rating Zones](#)
[Export Services](#)

RATING ZONES*

Location	Rating Zone	Remote Area
Talitsa (Sverdlovsk Region)	13	✓
Tambov (Tambov Region)	2	
Tarasovo (Podolsky distr., Moscow Region)	1	
Tarkhovka (St. Petersburg)	3	
Tarko-Sale (Yamal-Nenets Autonomous Area)	14	✓
Tayshet (Irkutsk Region)	17	✓
Temryuk (Krasnodar Territory)	8	
Terek (Kabardino-Balkarian Republic)	11	✓
Tikhoretsk (Krasnodar Territory)	8	
Tikhvin (Leningrad Region)	3	✓
Timashevsk (Krasnodar Territory)	8	
Tlyustenkhabl (Krasnodar Territory)	8	
Tobolsk (Tyumen Region)	13	✓
Togliatti (Samara Region)	7	
Tolmachevo (Novosibirsk Region)	15	
Tomsk (Tomsk Region)	15	
Torzhek (Tver Region)	2	✓
Tosno (Leningrad Region)	3	
Troitsk (Moscow Region)	1	
Troitsk (Chelyabinsk Region)	13	✓
Troitskoe (Podolsky distr., Moscow Region)	1	
Trubchevsk (Bryansk Region)	2	✓
Tsemolina (Krasnodar Territory)	8	
Tuapse (Krasnodar Territory)	8	
Tula (Tula Region)	2	
Tupikovo (Leninskiy distr., Moscow Region)	1	
Tutaev (Yaroslavl Region)	2	
Tuymazy (Republic of Bashkortostan)	12	✓
Tver (Tver Region)	2	
Tyarlevo (St. Petersburg)	3	
Tynda (Amur Region)	19	✓
Tyumen (Tyumen Region)	13	
Udomlya (Tver Region)	2	✓
Ufa (Republic of Bashkortostan)	12	
Ugleurskiy (Perm Territory)	13	✓
Uglich (Yaroslavl Region)	2	✓
Ukhta (Komi Republic)	10	
Ulan-Ude (Republic of Buryatia)	17	
Ulyanovsk (Ulyanovsk Region)	9	
Ulyanovskogo Lesoparka (Leninskiy distr., Moscow Region)	1	
Uray (Khanty-Mansi Autonomous Area – Yugra)	14	✓
Ushkovo (St. Petersburg)	3	
Usinsk (Komi Republic)	10	
Usman (Lipetsk Region)	2	✓
Usolye (Perm Territory)	13	
Usolye-Sibirskoe (Irkutsk Region)	17	✓
Ussuriysk (Primorye Territory)	18	

Location	Rating Zone	Remote Area
Ust-Ilimsk (Irkutsk Region)	17	✓
Ust-Izhora (St. Petersburg)	3	
Ust-Kinelskiy (Samara Region)	7	
Ust-Kut (Irkutsk Region)	17	✓
Ust-Labinsk (Krasnodar Territory)	8	✓
Utkina Zavod (St. Petersburg)	3	
Uvarovo (Domodedovsky distr., Moscow Region)	1	✓
Uzhur (Krasnoyarsk Territory)	16	✓
Uzlovaya (Tula Region)	2	✓
Vakhrushi (Kirov Region)	4	
Valuevo (Leninskiy distr., Moscow Region)	1	
Valuyki (Belgorod Region)	2	✓
Vanino (Khabarovsk Territory)	18	
Varvarino (Podolskiy distr., Moscow Region)	1	✓
Vatutinki (Leninskiy distr., Moscow Region)	1	
Velikie Luki (Pskov Region)	5	✓
Velikiy Novgorod (Novgorod Region)	5	
Velikiy Ustyug (Vologda Region)	10	✓
Velsk (Vologda Region)	2	✓
Vereshchagino (Perm Territory)	13	✓
Vereya (Ramenskiy distr., Moscow Region)	1	
Verkhnyaya Dubrovinka (Smolensk Region)	2	
Verkhnee Valuevo (Leninskiy distr., Moscow Region)	1	
Verkhniy Tagil (Sverdlovsk Region)	13	✓
Verkhnyaya Pyshma (Sverdlovsk Region)	13	
Verkhnyaya Salda (Sverdlovsk Region)	13	
Verkhovye (Moscow)	1	
Veseloe (Krasnodar Territory)	11	✓
Vichuga (Ivanovo Region)	2	✓
Vidnoe (Moscow Region)	1	
Vikhorevka (Irkutsk Region)	17	✓
Vishenki (Smolensk Region)	2	
Vladikavkaz (Republic of North Ossetia – Alania)	11	
Vladimir (Vladimir Region)	2	
Vladivostok (Primorye Territory)	18	
Vlasovo (Naro-Fominsky distr., Moscow Region)	1	
Vlasyevo (Leninskiy distr., Moscow Region)	1	
Vnukovo (Moscow Region)	1	
Volgodonsk (Rostov-on-Don Region)	8	
Volgograd (Volgograd Region)	9	
Volgorechensk (Kostroma Region)	2	
Volkhov (Volkhovskiy distr., Leningrad Region)	3	✓
Vologda (Vologda Region)	2	
Volsk (Saratov Region)	9	✓
Volzhsk (Region Mari El)	4	✓
Volzhsk (Volgograd Region)	9	
Vorkuta (Komi Republic)	10	✓

* Service capability includes large settlements only. For more information please contact your nearest DHL Express office.
 ✓ For remote area locations an additional tariff is applied.

ZONES AND RATES

[Connecting Your World](#)
[Sustainability](#)
[Service Offering](#)
[How to Ship with DHL Express](#)
[Digitalization](#)
[▶ Zones and Rates](#)
[Calculate the Price of Your Shipment](#)
[Optional Services](#)
[Surcharges](#)
[Customs Services](#)
[Service Capability and Rating Zones](#)
[Export Services](#)

RATING ZONES*

Location	Rating Zone	Remote Area
Voronezh (Voronezh Region)	2	
Vorsino (Podolsky distr., Moscow Region)	1	
Vorsma (Nizhny Novgorod Region)	4	
Voskhod (Istrinsky distr., Moscow Region)	1	✓
Voskhod (Novosibirsk Region)	15	
Voskresensk (Moscow Region)	1	
Vostochniy (Moscow)	1	
Vostochniy (Trans-Baikal Territory)	17	
Vostochniy (Tihoretskiy distr., Krasnodar Territory)	8	
Vostryakovo (Moscow Region)	1	
Votkinsk (Udmurtian Republic)	4	
Vsevolozhsk (Leningrad Region)	3	
Vyazma (Smolensk Region)	2	✓
Vyazniki (Stavropol Territory)	11	
Vyborg (Leningrad Region)	5	
Vykhino-Zhulebino (Moscow Region)	1	
Vyksa (Nizhny Novgorod Region)	4	✓
Vyshniy Volochek (Tver Region)	2	✓
Vysokovsk (Moscow Region)	1	✓
Yablonovskiy (Republic of Adygeya)	8	
Yakhroma (Moscow Region)	1	✓
Yakovlevo (Leninskiy distr., Moscow Region)	1	
Yakovlevo (Podolsky distr., Moscow Region)	1	
Yalutorovsk (Tyumen Region)	13	✓
Yamontovo (Leninskiy distr., Moscow Region)	1	
Yanaul (Republic of Bashkortostan)	12	✓
Yantarnyi (Aksay distr., Rostov-on-Don Region)	8	
Yantarnyy (Balashikhinsky distr., Moscow Region)	1	
Yarega (Komi Republic)	10	✓
Yaroslavl (Yaroslavl Region)	2	
Yartsevo (Moscow)	1	✓
Yasnogorsk (Tula Region)	2	✓
Yazovo (Leninskiy distr., Moscow Region)	1	
Yoshkar-Ola (Republic of Mari El)	4	
Yubileyniy (Moscow Region)	1	
Yubileyniy (Krasnodar Territory)	8	✓
Yugorsk (Khanty-Mansi Autonomous Area – Yugra)	14	✓
Yukhnov (Kaluga Region)	2	✓
Yurev-Polskiy (Vladimir Region)	2	✓
Yurevets (Vladimir Region)	2	
Yuryevo (Naro-Fominsky distr., Moscow Region)	1	✓
Yuzhnouralsk (Chelyabinsk Region)	13	✓
Zabaykalskiy (Trans-Baikal Territory)	17	✓
Zabolotye (Moscow)	1	✓
Zadonsk (Lipetsk Region)	2	✓
Zainsk (Republic of Tatarstan)	4	
Zaozernyi (Kurgan Region)	14	

Location	Rating Zone	Remote Area
Zareche (Orel Region)	2	
Zarechye (Moscow)	1	
Zarechniy (Penza Region)	4	
Zarechnyy (Sverdlovsk Region)	13	✓
Zarechye (Volkhovskiy distr., Leningrad Region)	3	✓
Zarinsk (Altai Territory)	15	✓
Zavodoukovsk (Tyumen Region)	13	✓
Zavolzhye (Nizhny Novgorod Region)	4	
Zelenodolsk (Republic of Tatarstan)	4	✓
Zelenogorsk (Krasnoyarsk Territory)	16	✓
Zelenogorsk (St. Petersburg)	3	
Zelenograd (Moscow)	1	
Zeleniy (Tikhoretsk distr., Krasnodar Territory)	8	✓
Zelenyy Bor (Smolensk Region)	2	
Zernograd (Rostov-on-Don Region)	8	✓
Zheleznogorsk (Krasnoyarsk Territory)	16	✓
Zheleznogorsk (Kursk Region)	2	✓
Zheleznovodsk (Stavropol Territory)	11	
Zhigulevsk (Samara Region)	7	
Zhukovka (Moscow Region)	1	
Zhukovka (Bryansk Region)	2	✓
Zhukovka (Naro-Fominsky distr., Moscow Region)	1	
Zhukovka (Orel Region)	2	
Zukovskiy (Moscow Region)	1	
Zhulebino (Moscow Region)	1	
Zimenki (Leninsky distr., Moscow Region)	1	
Zlatoust (Chelyabinsk Region)	13	✓
Znamenka (Orel Region)	2	
Znamya Oktyabrya (Podolsky distr., Moscow Region)	1	
Zvenigorod (Moscow Region)	1	✓
Zverevo (Rostov-on-Don Region)	8	✓
Zverevo (Moscow)	1	✓

* Service capability includes large settlements only. For more information please contact your nearest DHL Express office.
 ✓ For remote area locations an additional tariff is applied.

ZONES AND RATES

Calculate the Price
of Your Shipment

Optional
Services

Surcharges

Customs
Services

Service Capability
and Rating Zones

Export
Services

Service Rates*

DHL EXPRESS WORLDWIDE EXPORT

Weight ¹ in kg	Zone 1	Zone 2	Zone 3	Zone 4	Zone 5	Zone 6	Zone 7	Zone 8
Documents only up to 2 kg								
0.3*	9,100	12,040	12,850	14,600	13,840	17,490	22,260	25,420
0.5	9,980	12,820	13,800	15,110	15,490	18,790	23,440	26,700
1.0	12,870	15,940	17,810	19,030	19,660	23,120	27,880	31,930
1.5	14,810	18,420	20,760	21,960	23,270	27,110	32,110	36,560
2.0	16,750	20,900	23,710	24,890	26,880	31,100	36,340	41,190
Documents from 2.5 kg and non-documents** from 0.5 kg								
0.5	11,260	13,810	15,220	16,310	17,490	20,670	24,830	28,950
1	14,600	17,430	19,270	20,560	21,980	25,380	29,920	34,980
1.5	16,390	19,670	21,970	23,440	25,270	29,160	34,290	39,810
2	18,180	21,910	24,670	26,320	28,560	32,940	38,660	44,640
2.5	19,800	24,090	27,330	29,280	31,940	36,550	43,110	49,770
3	21,330	26,270	30,020	32,130	35,280	40,050	47,470	54,750
3.5	22,860	28,450	32,710	34,980	38,620	43,550	51,830	59,730
4	24,390	30,630	35,400	37,830	41,960	47,050	56,190	64,710
4.5	25,920	32,810	38,090	40,680	45,300	50,550	60,550	69,690
5	27,450	34,990	40,780	43,530	48,640	54,050	64,910	74,670
5.5	28,980	36,940	43,090	45,980	51,210	57,190	68,900	79,540
6	30,510	38,890	45,400	48,430	53,780	60,330	72,890	84,410
6.5	32,040	40,840	47,710	50,880	56,350	63,470	76,880	89,280
7	33,570	42,790	50,020	53,330	58,920	66,610	80,870	94,150
7.5	35,100	44,740	52,330	55,780	61,490	69,750	84,860	99,020
8	36,630	46,690	54,640	58,230	64,060	72,890	88,850	103,890
8.5	38,160	48,640	56,950	60,680	66,630	76,030	92,840	108,760
9	39,690	50,590	59,260	63,130	69,200	79,170	96,830	113,630
9.5	41,220	52,540	61,570	65,580	71,770	82,310	100,820	118,500
10	42,750	54,490	63,880	68,030	74,340	85,450	104,810	123,370
11	45,330	57,450	67,460	71,850	78,340	89,950	110,710	130,670
12	47,910	60,410	71,040	75,670	82,340	94,450	116,610	137,970
13	50,490	63,370	74,620	79,490	86,340	98,950	122,510	145,270
14	53,070	66,330	78,200	83,310	90,340	103,450	128,410	152,570
15	55,650	69,290	81,780	87,130	94,340	107,950	134,310	159,870
16	58,230	72,250	85,360	90,950	98,340	112,450	140,210	167,170
17	60,810	75,210	88,940	94,770	102,340	116,950	146,110	174,470
18	63,390	78,170	92,520	98,590	106,340	121,450	152,010	181,770
19	65,970	81,130	96,100	102,410	110,340	125,950	157,910	189,070
20	68,550	84,090	99,680	106,230	114,340	130,450	163,810	196,370
21	71,050	86,890	102,740	109,570	118,080	134,710	169,050	202,470
22	73,550	89,690	105,800	112,910	121,820	138,970	174,290	208,570
23	76,050	92,490	108,860	116,250	125,560	143,230	179,530	214,670
24	78,550	95,290	111,920	119,590	129,300	147,490	184,770	220,770
25	81,050	98,090	114,980	122,930	133,040	151,750	190,010	226,870
26	83,550	100,890	118,040	126,270	136,780	156,010	195,250	232,970
27	86,050	103,690	121,100	129,610	140,520	160,270	200,490	239,070
28	88,550	106,490	124,160	132,950	144,260	164,530	205,730	245,170
29	91,050	109,290	127,220	136,290	148,000	168,790	210,970	251,270
30	93,550	112,090	130,280	139,630	151,740	173,050	216,210	257,370
40	110,350	132,690	155,080	166,630	182,840	208,350	260,810	312,970
50	127,150	153,290	179,880	193,630	213,940	243,650	305,410	368,570
60	143,950	173,890	204,680	220,630	245,040	278,950	350,010	424,170
70	160,750	194,490	229,480	247,630	276,140	314,250	394,610	479,770
For each extra 0.5 kg								
свыше 10 кг	1,290	1,480	1,790	1,910	2,000	2,250	2,950	3,650
свыше 20 кг	1,250	1,400	1,530	1,670	1,870	2,130	2,620	3,050
For each extra 1 kg								
30.1-70	1,680	2,060	2,480	2,700	3,110	3,530	4,460	5,560
70.1-300	2,410	2,850	3,410	3,730	4,190	4,750	5,910	6,510
300.1-1000	2,660	3,160	3,770	4,120	4,630	5,230	6,510	7,200
DHL Express 12:00	1,650*							
DHL Express 10:30	2,700*							
DHL Express 09:00	3,400*							

¹ DHL's shipment charges are calculated according to the higher of actual or volumetric weight of each cargo place. The weight shall be rounded up to the value divisible by 0.5 kg (for weighing less 30 kg) and 1 kg (for shipments weighing more than 30 kg). For example: 2.1 kg shall be rounded up to 2.5 kg, and 31.2 kg shall be rounded up to 32 kg. Attention! The minimal chargeable weight for the delivery of documents with no commercial value at DHL EXPRESS WORLDWIDE EXPORT rates shall be 0.3 kg. For all other shipments the minimum chargeable weight is 0.5 kg.

* All rates are stated in rubles exclusive of VAT and fuel surcharge. Rates for specific weights not shown in the table above are available on request in your nearest DHL office. DHL is entitled to change its rates on its sole discretion.

** Shipments qualified as "Documents" shall mean "Express documents" with no commercial value. Shipments which are not qualifying for "Express documents" are to be "Other shipments". Please be advised that "Documents" and "Other shipments" definitions are subjects to legal requirements of the country of destination.

ZONES AND RATES

Calculate the Price
of Your Shipment

Optional
Services

Surcharges

Customs
Services

Service Capability
and Rating Zones

Export
Services

RATING ZONES*

1. Moscow, Moscow region
2. Central Federal District (except Moscow and Moscow Region), Vologda Region
3. Saint Petersburg
4. Kirov, Nizhniy Novgorod, Penza Regions, Republic of Mari El, Republic of Mordovia, Republic of Tatarstan, Udmurtian Republic and Chuvash Republic
5. Novgorod, Pskov, Leningrad** Regions, Republic of Karelia,
6. Kaliningrad region***
7. Samara Region
8. Krasnodar Territory**, Rostov Region, Republic of Adygeya, Republic of Kalmykia
9. Saratov, Ulyanovsk, Volgograd Regions
10. Arkhangelsk and Murmansk Regions, Komi Republic
11. Astrakhan Region, North Caucasian Federal District,
12. Orenburg Region, Republic of Bashkortostan**
13. Perm Territory**, Sverdlovsk, Chelyabinsk** and Tyumen Regions
14. Yamal-Nenets Autonomous Area, Khanty-Mansi Autonomous Area and Kurgan Region
15. Novosibirsk, Omsk, Tomsk** Regions, Altai Territory, Republic of Altai
16. Krasnoyarsk Territory**, Republic of Tuva, Republic of Khakassia, Kemerovo Region
17. Irkutsk Region, Trans-Baikal Territory, Republic of Buryatia
18. Khabarovsk Territory, Jewish Autonomous Region, Primorsky Region
19. Amur Region

* Service capability may change during the year. For more information please contact your nearest DHL office.

** Most of the locations in mentioned regions belong to stated rating zone. Exact information is in the table "Rating zones".

*** Temporary not serviced.



Country Office:

127083 Moscow

8 Marta St., 14

Telephone: +7 (495) 956 1000, 8 (800) 7000-345

A full list of DHL Express offices in Russia
is available at express.dhl.ru

© DHL

© DHL Express

DHL® and DHL Express® are registered trademarks
of DHL International GmbH.

Valid from November 1st, 2024.

Subject to change without notice.

Approved by the Order №1-о6/16/10/24