



DHL EXPRESS

SERVICE & RATE GUIDE 2024

RUSSIAN FEDERATION

GET STARTED

[Connecting Your World](#)

[Dear Customer](#)

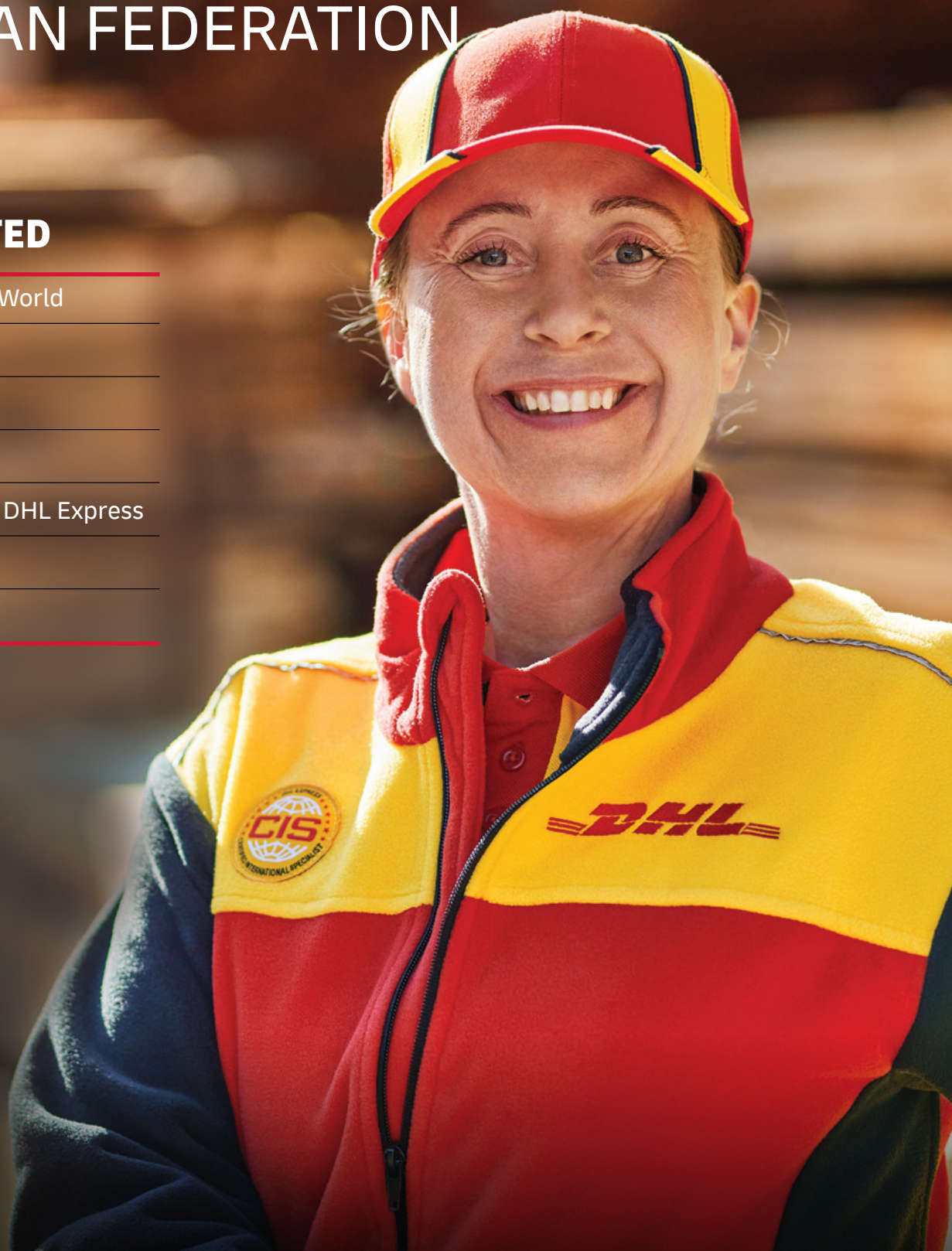
[Sustainability](#)

[Service Offering](#)

[How to Ship with DHL Express](#)

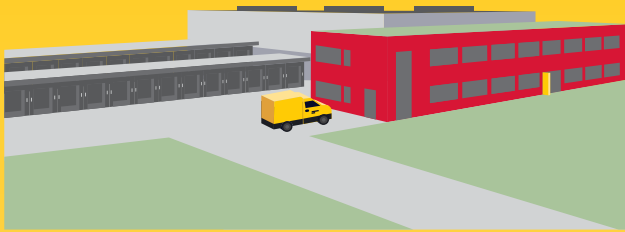
[Digitalization](#)

[Zones and Rates](#)



CONNECTING YOUR WORLD

220
countries and
territories served



3,500
facilities

500+

airports served
worldwide



300+

aircraft

2,400+

flights per day



34,500
vehicles



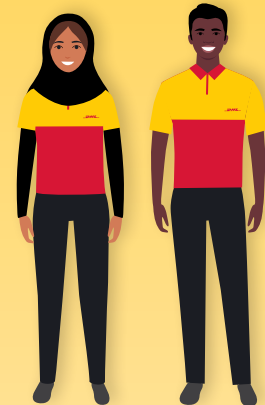
148,000
Service Points

By the year 2050, DHL
Group aims to achieve
net zero emissions
logistics

MISSION 2050
ZERO EMISSIONS
GOGREEN

296
million

Time Definite shipments
per year



120,000
employees



415

TAPA* certifications

Figures are global and are approximate as of the end of 2022
*TAPA = Transported Asset Protection Association

DEAR CUSTOMER

Welcome to the DHL Express Service and Rate Guide for 2024. If you are reading this, it means you have a personal or business need to move something, from somewhere, to somewhere and you want it done quickly, securely and reliably. We are here to help you!

As the global market leader in Time Definite International (TDI) shipping and courier delivery, and the most international company in the world, this is what we do! We move over 1 million shipments every working day, from point A to point B in 220 countries and territories, as quickly, securely and reliably as possible and with as much transparency as possible. Over 2.5 million customers around the world put their trust in us, and our team of 120,000+ Certified International Specialists strive to exceed their expectations on every single shipment.

Global logistics appears to be finally seeing the end of COVID-driven disruptions but yet is not completely back to the 'normal' of the previous time period. Overall, the global macroeconomic situation has started to stabilize although uncertainty remains. Aviation networks remain volatile in many parts of the world and the crisis in Europe continues to add complexity to global logistics. In the face of these and other challenges, we have continued to invest in safeguarding the resilience of our global network, which enables us to provide secure and reliable supply chain solutions to support our customers.

Sustainability continues to grow in focus in all logistics conversations and I invite you to learn how our GoGreen Plus product, introduced in 2023, and our leveraging of Sustainable Aviation Fuel (SAF) can directly help make your products more environmentally friendly – a growing criterion in the purchase decision process of both individual consumers and businesses.

Digitalization retains its laser focus at DHL and we have brought to market a slew of tools to support our customers, in particular small businesses. We support the development of small businesses by offering companies a flexible pricing system.

Interested? Let's connect!

Our goal is to fully support Russian exporters. We consider this field to be very promising: the e-commerce segment in the world continues to grow confidently, and business in Russia opens up new markets for export development. DHL remains a reliable partner for exporters, helping them transform their local businesses into global ones.

In conclusion, please use this guide to learn how DHL Express products, services and tools can meet your logistics needs. Thank you for trusting us to be your Logistics Partner of Choice!

Sincerely,

Dmitriy Zharkov

Managing Director DHL Express Russia



SUSTAINABILITY

[Connecting Your World](#)
[▶ Sustainability](#)
[Service Offering](#)
[How to Ship with DHL Express](#)
[Digitalization](#)
[Zones and Rates](#)

Everything we do is to serve one purpose: **Connecting people, improving lives.** To fulfill this purpose, we need to make every dimension of our business sustainable. Our Sustainability Roadmap sets out our ambitions in three focus areas: Environment, Social and Governance (ESG). Find case studies and more details [here](#).

OUR TARGETS FOR 2030

<29 million

Reduction in our greenhouse gas emissions to under 29 million tonnes

€7 billion

Investment of €7 billion in green technologies

SBTi

Commitment to SBTi (Science-Based Targets initiatives)

30%

SAF blending of 30% for all air transport

CLEAN OPERATIONS FOR CLIMATE PROTECTION

Leader in sustainable aviation



Our GoGreen Plus service allows you to embrace green logistics by insetting, or reducing, the CO2 within your own supply chain. We do this by using Sustainable Aviation Fuel (SAF). And that is not only good for the environment, it can benefit you by helping you to report your CO2 emissions. Here is how to get on board:



- With the GoGreen Plus **basic contract**, 30% CO2 reduction (insetting) is applied to all your express shipments via air.
- In **MyDHL+**, you can opt for GoGreen Plus and choose which shipments to invest in with SAF.
- Alternatively, choose a **customized offer** for even more CO2 reduction.

Our GoGreen Plus service is made possible following DHL's landmark collaborations with bp and Neste to supply DHL Express with SAF, which is expected to save some **two million tons** of carbon dioxide emissions over the aviation fuel cycle.



Green last-mile and line-haul

Electrify **60%** of last-mile delivery vehicles and increase share of sustainable fuels in line haul to more than **30%** by 2030.



Carbon neutral buildings

Design **100%** of all new buildings to be carbon neutral.



Green product portfolio

Our GoGreen Plus service allows customers shipping TDI to inset their CO2 air emissions by up to **100%**.

Through collaboration, we can make our supply chains more sustainable. Read more about the Era of Sustainable Logistics.



GREAT COMPANY TO WORK FOR ALL

- Attract and retain the best talent
- Strong 'Safety First' culture
- Diverse and inclusive workplace

HIGHLY TRUSTED COMPANY

- Compliance as an integral part of daily business
- Effective governance set-up across our organization
- Like-minded and compliant suppliers and partners



SERVICE OFFERING

Connecting Your World
Sustainability
► Service Offering
How to Ship with DHL Express
Digitalization
Zones and Rates

Export Services	Enabling Your Growth	Optional Services	Surcharges	Customs Services
-----------------	----------------------	-------------------	------------	------------------

All our services are time definite and offer you secure door-to-door delivery of goods and documents to almost every country and territory. Whether you need your shipments delivered at the start, middle or end of a business day, our services offer full track-and-trace visibility so you always know where your shipments are.

EXPORT SERVICES

DHL Express Worldwide

Our most popular product, DHL Express Worldwide, offers an end of business day delivery service around the world for pieces up to 70kg and shipments up to 1,000kg.

We deliver reliably and quickly to more global destinations across a single integrated network than any other express delivery company.

DHL Express 12:00

With DHL Express 12:00 you will receive your shipments before 12 noon on the next possible business day*. DHL Express 12:00

offers a money-back guarantee and is suitable for pieces up to 70kg and shipments up to 300kg.

DHL Express 9:00 (10:30 to the USA)

Our premium time-definite service offers a delivery before 9:00/10:30 on the next possible business day*. DHL Express 9:00 is offered to the majority of business centers in Europe, Middle East, Africa, Asia and the Americas. DHL Express 9:00/10:30 features a money-back guarantee and is suitable for pieces up to 30kg and shipments up to 300kg.

International Services**

	DHL Express Worldwide	DHL Express 12:00	DHL Express 9:00/10:30
Service description	Express door-to-door international pre 18:00 hrs delivery of document and non-document shipments	Express door-to-door international pre 12:00 hrs delivery of document and non-document shipments on the next possible business day. Priority handling	Express door-to-door international pre 9:00/10:30 hrs delivery of document and non-document shipments on the next possible business day. Priority handling and proactive notification of delivery
Money-back guarantee	No	Yes***	Yes***
Countries and territories covered	More than 220****	Available to Europe, Middle East, Asia, Latin America and USA****	Available to Europe, Middle East, Asia and USA****
Maximum piece weight	70kg	70kg	30kg
Maximum pieces per shipment	—	10	10
Maximum shipment weight	1000kg	300kg	300kg
Maximum piece dimensions	120 x 80 x 80cm	120 x 80 x 80cm	120 x 80 x 80cm
Maximum pallet weight	300 kg	Pallets not accepted	Pallets not accepted
Maximum pallet dimensions (L x W x H)	120 x 120 x 160cm	Pallets not accepted	Pallets not accepted
Additional services and surcharges	Optional services available upon request. Additional surcharges may apply	Premium charge 12:00 to the DHL EXPRESS WORLDWIDE rate	Premium charge 9:00/10:30 to the DHL EXPRESS WORLDWIDE rate

* DHL aims to provide your shipments with the shortest transit time possible. All references contained in this DHL Rate and Transit Guide related to pre 9:00 hrs, pre 10:30 hrs and pre 12:00 hrs delivery services mean that DHL will make every effort for time definite delivery within the timeframes outlined and due to Money-back guarantee. For more information on the average transit time please contact DHL Express office in your city or visit [express.dhl.ru](https://www.express.dhl.ru). In the event of late delivery, we guarantee a money-back of fixed charge per Premium 9:00/10:30/12:00 including fuel surcharge.

** For more information on the availability of these services in your location please contact your nearest DHL office.

*** For all shipments transported through DHL network, standard shipment restrictions and conditions (as specified in the standard delivery terms on DHL waybill) and conditions of money-back guarantee (as published at [express.dhl.ru](https://www.express.dhl.ru)) are applicable.

**** Service capability may change during the year. For more information on the availability of this service in your location please contact your nearest DHL office.

A shipment is deemed unacceptable if its packaging is absent or inadequate, or if transporting the shipment would present risks of damaging equipment, other packages or injuring personnel. DHL reserves the right to either not accept or return the shipment to the shipper. These network restrictions are subject to change with 30 days' notice

SERVICE OFFERING

Connecting Your World

Sustainability

► Service Offering

How to Ship with DHL Express

Digitalization

Zones and Rates

Export
ServicesEnabling
Your GrowthOptional
Services

Surcharges

Customs
Services

GLOBAL TRADE AND YOU

A series of crises has put international trade at the center of the debate about economic growth and resilience. What are the current prospects for globalization and trade? Is there cause for concern? Is trade still an attractive source of growth? We deep dived into the data and conducted a thorough, fact-based analysis – and the results might just surprise you. In partnership with NYU Stern's Center for the Future of Management and its DHL Initiative on Globalization, the 'DHL Trade Growth Atlas' examines global trade growth trends and the trade patterns of 173 countries worldwide that combined make up more than 99% of world trade, GDP and population. Despite recent shocks and worsening macroeconomic conditions in much of the world, the study overall gives an upbeat assessment of the prospects for future trade growth.

We know the value of understanding the long-term global trade landscape for navigating short-term shifts in economic and trade growth. We help our customers make sense of what this means for their business to maximize the enormous potential of globalization and international trade.

Trade growth expanding across a broader range of countries

New poles emerging: world trade center of gravity moving south

Shift in mix of products traded by advanced vs. emerging economies



POWERING UP THE POTENTIAL OF INTERNATIONAL E-COMMERCE

Discover and grow

Visit express.dhl.ru/en to learn more about how DHL helps e-commerce companies ranging from start-ups to large enterprises, advising them on how to grow internationally. Our e-commerce focused country guides, white papers such as 'The Ultimate B2B E-Commerce Guide', customer and trend research and market intelligence tools can enable you to better understand your customers and their shipping requirements to take the next step in your e-commerce journey.

International e-commerce

We help our customers go global with ease and speed to maximize the enormous potential of international e-commerce. DHL supports our customers' international growth with:

- Global reach
- Express delivery options
- Flexible delivery options for receivers (see 'On Demand Delivery')
- Duty billing options and customs expertise
- Consultative advice for our customers on how to increase sales and grow cross-border

Fast, flexible and easy

Consumers expect everything 'on demand' – anytime, anywhere. DHL shipping options give customers a distinct competitive edge: over 90% of online consumers look at the available delivery options before going to the checkout, and their decision is influenced by delivery speed, flexibility and ease.

SERVICE OFFERING

Connecting Your World
Sustainability
► Service Offering
How to Ship with DHL Express
Digitalization
Zones and Rates

- Export Services
- Enabling Your Growth
- Optional Services
- Surcharges
- Customs Services

OPTIONAL SERVICES*

GoGreen Plus
GoGreen Plus supports you in reducing your Scope 3 emissions. DHL will reduce transport related carbon emissions for shipments by investing in Sustainable Aviation Fuel (SAF). Using SAF can reduce lifecycle carbon emissions by up to 80% compared to traditional jet fuel. By investing in SAF, greenhouse gas emissions directly related to your DHL Express shipment are reduced. The process is audited annually by SGS (Société Générale de Surveillance) to ensure compliance to regulations and standards.

Rate (RUB/Kg)*

	To	Asia	Europe	Americas	ROW
From					
Asia		19,0	34,0	44,0	39,0
Europe		44,0	11,0	37,0	27,0
Americas		68,0	36,0	29,0	58,0
ROW		51,0	29,0	59,0	17,0

* All rates are stated in roubles exclusive of VAT.
Tariff is calculated for each full and non-full kilogram. Each non-full kilogram is rounded up with increment of 0.5 kg.

For account customers an additional tariff and service provision are agreed individually.

Dedicated Pickup
If your business needs a dedicated vehicle to collect unusual shipments, or a pickup outside normal business hours or on Saturday, we can arrange this.

Saturday pickup
In countries where Saturday is not a normal working day, DHL can arrange a shipment pickup. The service is available at selected postal locations only.

Saturday Delivery
We offer Saturday delivery services to key cities in more than 70 countries

Shipment Insurance**
We recommend this comprehensive protection for your valuable or personal shipments, giving you peace of mind in the unlikely event of physical damage or loss.



* For more information on the availability of these services in your location please contact your nearest DHL office. Please make a request for these optional services when booking DHL courier. DHL reserves the right to apply additional charges for these services as well as any not shown in this guide.
** Transportation with the declared value.

SERVICE OFFERING

Connecting Your World
Sustainability
► Service Offering
How to Ship with DHL Express
Digitalization
Zones and Rates

Export Services	Enabling Your Growth	Optional Services	Surcharges	Customs Services
-----------------	----------------------	-------------------	------------	------------------

OPTIONAL SERVICES*

Extended Liability
DHL Express always takes the greatest of care with your documents. Unfortunately, accidents can sometimes happen and our Extended Liability service will provide you with additional peace of mind and financial protection. The fixed compensation is 48 000 RUB in case of loss, regardless of document value.

Shipment Preparation
At customer’s request DHL is ready to provide shipment preparation services in line with the shipper’s guidelines. The service includes picking up consolidated shipment from the customer, delivery to DHL’s warehouse, DHL’s waybill preparation, content selection and packaging for single-piece shipments which do not exceed DHL’s standard weight and sizes and thus require no special handling. The service is available for account customers.

Packaging supplies
To ensure further protection of your shipment during its transit, we recommend taking advantage of DHL packaging options that meet your requirements best. Please contact your local DHL Express office for details on options and availability. DHL courier will deliver the packaging to make the preparation of your shipment even easier. Upon your request DHL can provide additional packaging materials by pre-order of packaging items in bulk.

Verbal notification
When you need documented proof that your shipment has been delivered, DHL can provide delivery confirmation in most convenient format including DHL Express letterhead.

Hold for collection
On shipper request, a shipment is held at the default DHL delivery facility at destination for consignee collection, rather than attempt a delivery at the receiver’s address. The service is booked through Customer Service or supporting shipping tools. The destination will notify the receiver when and at which facility the shipment is ready

to collect. A consignee cell phone number is mandatory.

Residential Address
Customers shipping to a home or private residence can activate specific delivery options by designating the delivery address as residential. For such shipments, DHL Express will proactively notify the receiver via email or SMS about the shipment’s progress. Receivers can then select the most suitable delivery option on the **On Demand Delivery** website.

Direct Signature
If you are sending sensitive documents or high value contents you can request DHL to obtain a direct signature from the consignee or a representative at the delivery address. DHL will ensure your shipment is not redirected, or delivered at an alternative address. Available on MyDHL+ and On Demand Delivery websites.

Adult signature
At Customer’s request, DHL will obtain a delivery signature from an adult at the stipulated delivery address. If, for local legislative reasons, proof of the receivers age needs to be verified, DHL may need to request presentation of a valid government-issued personal identification document.

Change of billing
The service applies when a customer requests a change of defined billing information on an already issued invoice, which will result in a reissuing of the invoice and, in case of an account change, crediting of the old account and debiting of the new.

* For more information on the availability of these services in your location please contact your nearest DHL office. Please make a request for these optional services when booking DHL courier. DHL reserves the right to apply additional charges for these services as well as any not shown in this guide.

DUTY BILLING SERVICES

Duty Tax Paid
At customer’s request, DHL clears the shipment at destination and arranges for the applicable import duties, taxes and regulatory charges to be invoiced to a specified DHL account at origin or third country, rather than the receiver of the shipment being billed at destination. Charges apply only in case of customs payments, duties and other fees being charged for customs declaration in the country of destination.

Duty Tax Importer
At customer’s request, DHL clears the shipment at destination and arranges for any applicable import duties, taxes and regulatory charges to be invoiced to a specified DHL account at destination. The duty tax payer will be invoiced an extra charge based on a flat rate or a percentage of the fiscal charges that were advanced.

SERVICE OFFERING

Connecting Your World

Sustainability

► Service Offering

How to Ship with DHL Express

Digitalization

Zones and Rates

Export
ServicesEnabling
Your GrowthOptional
Services

Surcharges

Customs
Services

SURCHARGES*

Fuel Surcharge

The fuel surcharge for International Time Definite services will be based on the daily average spot prices for US Gulf Coast (USGC) kerosene-type jet fuel, as reported by the U.S. Department of Energy between 3rd week release of prior month to 3rd week release of actual month. For example, the daily average price for fuel from 18th April to 15th May is used to determine the applicable surcharge in June.

Within Europe this is measured by the European Commission Directorate General for Energy and Transport and published in the Oil Bulletin. The fuel surcharge applies to transportation charges on all services and to the following surcharges (where applicable): Saturday Delivery, Saturday Pickup, Elevated Risk, Demand Surcharge, Emergency Situation, Remote Area Delivery, Remote Area Pickup, Dedicated Pickup, Residential Address, Overweight Piece, Oversize Piece and Non-Stackable Pallet.

DHL reserves the right to change the fuel surcharge index and table with or without notice. Both the amount and duration of the surcharge will be determined at DHL's sole discretion.

Remote Area

If you need to send a parcel or a document to a remote location anywhere in the world DHL will deliver the shipment you need. Special tariffs apply. The list of remote locations is available at express.dhl.ru or on pages 27-37 of this Guide.

Overweight Piece

A fixed surcharge is applied to every piece, including a pallet that exceeds a scale or volumetric weight of 70kg. The Overweight Piece surcharge applies to international shipments.

Oversize Piece

This fixed surcharge applies to every piece, including a pallet, with a single dimension in excess of 120cm. The Oversize Piece surcharge applies to international shipments.

Non-Stackable Pallet

This fixed surcharge is applied to every pallet within a shipment that cannot be stacked, either on request by the shipper, or because of its shape, content or packaging. This surcharge applies to international shipments and does not apply to pieces below 30kg.

Demand surcharge

One or more Demand Surcharges will apply to shipments during

a period of high demand. A period of high demand is to be determined by DHL at its own discretion but may include a time of high demand for shipping services or a period with high operational cost. Details regarding the application of Demand Surcharges are set forth at mydhl.express.dhl and will be subject to change upon prior notice. Demand Surcharges apply cumulatively if a shipment and/or individual pieces meet more than one of the specified criteria. Demand Surcharges apply in addition to the rates and any other applicable charges.

Emergency Situation

This surcharge applies in exceptional cases when DHL is required to recover costs associated with temporary emergency situations beyond DHL's control which could not be reasonably anticipated at the commencement of an agreement.

Dry Ice

A service charge will be applied for the handling and transportation of Dry Ice UN1845, which is used as a freezing agent for non-dangerous goods. Approved customer accounts only.

Biological Substance UN3373

Shipments containing Biological Substances Category B (UN3373) are accepted in combination with DHL Medical Express only.

Contractual agreement required.

Shipping Lithium Batteries II**

Shipping Lithium Batteries *with* equipment

A service charge will be assessed on Lithium-Ion and Lithium-Metal batteries **with** equipment. Packaging must be compliant with the appropriate IATA Packing Instruction (PI): 966 for Lithium-Ion and 969 for Lithium-Metal, Section II respectively. Accepted from approved shippers only.

Shipping Lithium Batteries *in* equipment

Shipments containing Lithium-Ion or Lithium-Metal batteries **in** equipment are accepted only in compliance with the appropriate IATA Packing Instruction (PI): 967 for Lithium-Ion and 970 for Lithium-Metal, Section II respectively.

DHL **will not accept** any shipment that is known or suspected to contain defective or damaged batteries.

* For more information on the availability of these services in your location please contact your nearest DHL office. Please make a request for these optional services when booking DHL courier. DHL reserves the right to apply additional charges for these services as well as any not shown in this guide.

** Please alert DHL Express whenever you intend to send any shipments containing Lithium Batteries. Our team of experts will be pleased to guide you through the latest IATA Dangerous Goods Regulations.

SERVICE OFFERING

Connecting Your World
Sustainability
► Service Offering
How to Ship with DHL Express
Digitalization
Zones and Rates

Export Services	Enabling Your Growth	Optional Services	Surcharges	Customs Services
-----------------	----------------------	-------------------	------------	------------------

SURCHARGES*

Address Correction

A fixed surcharge is applied per shipment when the destination address provided by the Shipper is incomplete, outdated or incorrect and DHL is subsequently unable to deliver the shipment. DHL searches and determines the correct address to complete the delivery.

Data Entry

This fixed surcharge applies for each shipment consigned with non-electronic, paper based manual waybills. Electronic shipping documentation incurs no additional charges. Will not be applied when ordering some of additional services. Please check the list of these services: <https://express.dhl.ru/en/info/dop/>.

Security Charges

Additional surcharges may apply when shipping from or to a destination country where DHL is operating at elevated risk due to continuous state of war, civil unrest, or continuous threats from terrorism (**Elevated Risk**), or when shipping to a destination country that is subject to trade restrictions imposed by the UN Security Council (**Restricted Destination**) or national legislation such as the EEAS of the European Union or the US Office of Foreign Assets Control (OFAC).**

Premium 9:00/10:30/12:00

A fixed premium charge applies to DHL Express 9:00/10:30/12:00 service for international shipments.



* For more information on the availability of these services in your location please contact your nearest DHL office. Please make a request for these optional services when booking DHL courier. DHL reserves the right to apply additional charges for these services as well as any not shown in this guide.
** To get the list of destination countries please contact your nearest DHL office or visit express.dhl.ru, section Optional services and charges

SERVICE OFFERING

Connecting Your World
Sustainability
► Service Offering
How to Ship with DHL Express
Digitalization
Zones and Rates

Export Services	Enabling Your Growth	Optional Services	Surcharges	Customs Services
-----------------	----------------------	-------------------	------------	------------------

CUSTOMS SERVICES

Navigating the customs landscape is made easier by DHL's extensive knowledge and experience of both standard and non-routine customs-clearance processes. Get answers to many of your questions with our new online tool, [My Global Trade Services](#) tool, which will help you expand across borders – and concentrate on your core business.

- All non-document shipments require a commercial invoice or a proforma invoice.
- Our customs specialists are ready to provide advice based on about 35 years experience in customs clearance procedures in accordance with Russian customs legislation. For more information on customs services please contact your nearest DHL office.
- Supplementary clearance services are available.
- Customs-related terminal handling services are available

Customs Declaration Services and the Range of Terminal Cargo Handling Services including Loading and Unloading

The whole range of tasks related to arranging customs declaration, including analysis of shipping documentation, establishing of HS Codes, compiling sets of documents, assistance in drawing up standard letters on behalf of the client, drawing up of customs declaration forms, as well as the range of services related to terminal cargo handling, including loading and unloading, and registration and logging of cargo at bonded warehouse storage facilities. Arrangement of customs declaration also includes submission to customs authorities of customs declaration forms, and the full set of documents and records for the goods, and attendance at both customs inspections and clearance, and at the release and return of goods from storage.

Storage of Goods at Bonded Storage Warehouse

There is a single tariff for all cargo moving through DHL network. Payment is not applicable to goods storage on the first weekend or public holidays after arrival, if they fall earlier than on the fourth working day after the cargo has been placed in storage.

Multiline entry

Charges apply when extra lines are recorded on the customs clearance, for example with different commodities or different countries of manufacture.

Specialised Forms of Inspection (veterinary, phytosanitary, DRM, health and safety)

Veterinary, phytosanitary and health and safety inspections are carried out in cases where HS Codes correspond to the relevant control measures. These are obligatory for all goods of vegetable and animal origin, as well as those goods in direct contact with humans capable of causing harm to health.

DRM – is the control of fissile and radioactive materials. This service consists of the receipt of the requisite documentation from the state supervisory authorities.

Export Declaration

Applies in countries where an export declaration is required for shipments containing controlled commodities or exceeding a certain value threshold or weight. Where automated export

systems are available to the public, shippers may avoid the charge by submitting the export declaration online. In case of IMP billed shipments DHL will submit the export declaration in order to accelerate the export at origin and pass the charge to the importer's account.

Arranging Preliminary Inspections

This is carried out where applicable for the purposes of identifying the load, ascertaining the quantity, weight, name and intended use of the goods. The preliminary inspection is necessary for the assignment of the correct HS Code for declaration of the goods to the customs authorities. It is applicable in instances where accompanying documentation lacks sufficient information required for customs declaration of the cargo, where discrepancies with the goods records declared in the shipping documents have been previously discovered.

Adjustment of information in Customs Declaration (per Customs Declaration)

DHL provides the service of compiling the adjustment to customs values document.

Representing of Represented Entity within additional control of functional departments of Customs

Representation of client's interests at conducting of inspections of declared records by customs authorities departments. Required in cases where terms for approval, or of a decision taken, have been entrusted to specialized customs departments. For example confirmation of HS code or approval or determination of goods' customs value etc.

Preparation of the set of documents

Preparation of the set of documents (beyond the scope of standard documentation), required for declaring goods to the customs authorities.

Examples:

- Research and preparation of technical description for goods;
- Preparation of translations;
- Maintenance of database for client's goods;
- Compiling invoices and translating their contents.

Receipt of Confirmation from Border Customs Officials of De Facto Goods Exportation

Presentation of goods to border customs officials, receipt and dispatch to client of written confirmation of de facto exportation in cases of export.

Applicable on request of the client only for cargo subject to individual goods declarations.

Physical Intervention

A surcharge applies for shipments intercepted for physical examination by customs authorities. Arrangements for inspections may also include full or partial unloading of a vehicle, the specific marking of prototypes, mutilation of samples or the examination of shipment content.

HOW TO SHIP WITH DHL EXPRESS

[Connecting Your World](#)[Sustainability](#)[Service Offering](#)[► How to Ship with DHL Express](#)[Digitalization](#)[Zones and Rates](#)[Preparing Your Shipment](#)[Packaging Your Shipment](#)[Paying for Your Shipment](#)

PREPARING YOUR SHIPMENT: AS EASY AS 1-2-3

1 Shipment weight

- Please weigh and measure your shipment.
- If you are sending a large but lightweight shipment, where its volumetric (dimensional) weight exceeds its actual weight, the cost of the shipment is calculated on the space your consignment takes up on the aircraft. This is a standard IATA method. To calculate the volumetric weight of your shipment, simply multiply the length by height by width in centimeters, then divide the total sum by 5,000 for each piece in the shipment.
- Any piece in the shipment may be re-weighed and/or re-measured by DHL to confirm this calculation.

2 Documentation required: waybill

- All shipments sent with DHL Express need to have a fully completed DHL waybill or label securely attached to each piece. This will enable the successful movement of your shipment through the DHL network. Each waybill or label is individually numbered to allow you to track your shipment from collection through to delivery.
- Your shipment may also need to be accompanied by customs documentation, such as a commercial or proforma invoice, as well as additional paperwork depending on the contents and value of the shipment and the country you are sending to.

3 Documentation required: invoice

- A commercial or proforma invoice is required when sending non-document shipments to countries and territories outside your origin country or customs union. This is essentially a declaration containing all the details of a transaction and is used by customs authorities to assess if duties or taxes are payable.
- A commercial invoice is used when goods are part of a commercial transaction or intended for resale.
- A proforma invoice is used when sending goods of no commercial value (for example, when sending samples).



HOW TO SHIP WITH DHL EXPRESS

Connecting Your World
Sustainability
Service Offering
► How to Ship with DHL Express
Digitalization
Zones and Rates

Preparing Your Shipment

Packaging Your Shipment

Paying for Your Shipment

PREPARING YOUR SHIPMENT INVOICE

Your invoice will require the following details:

1. BANK DETAILS

These are the bank details that will be used for the transaction between the seller and buyer. These details are not required for non-commercial/proforma invoices.

2. DESCRIPTION

Generic or broad descriptions are no longer permitted and are likely to cause delays. Descriptions should include the items, how many there are, what they are made of, and what they will be used for. Describing items as ‘samples’, ‘parts’ or ‘electronics’ is not acceptable for customs classification, safety and security reasons. Instead of ‘electronics’, for example, use a description such as ‘television’.

3. COMMODITY CODE

This is the product identification code used by the exporting country to classify the goods to be exported. It assists clearance and avoids delays.

4. COUNTRY OF MANUFACTURE/ORIGIN

This relates to the place of manufacture, not the country of export. If items are manufactured in more than one country, please list the origins.

5. TOTAL DECLARED VALUE

This is the total value of the transaction for customs purposes based on the Incoterm selected. The total declared value should include freight and insurance charges if the seller is responsible for these two elements.

6. TYPE OF EXPORT

The options are: (1) Permanent; (2) Temporary.

7. INCOTERM

Insert the Incoterm that best describes the terms of the transaction. For example, DAP (Delivered At Place).

8. REASON FOR EXPORT

This could be: For Sale; For Repair; After Repair; Gift; Sample; Personal Use Not For Resale; Replacement; Intercompany Transfer; or Personal Effects.

9. TAX ID/VAT NUMBER

To reduce the time for cargo handling, it is necessary to indicate the Tax ID/ VAT number of the sender-legal entity and the TIN of the sender on the invoice (proforma-invoice).

Commercial invoice

Bank details

1.

Importer (bill to)

Exporter

Tax ID/VAT number9.

Date

Waybill number

Invoice number

Exporter code

Receiver if different from Importer

Tax ID/VAT number

Shipment reference

Full description of goods	Commodity code	Item quantity	Unit value [Currency]	Subtotal value [Currency]	Net weight	Country of manufacture/ origin
2.	3.					4.
Freight						
Insurance						
Total declared value/currency5.				Total net weight/kg(s)		
Total pieces				Total gross weight/kg(s)		

6. Type of export

7. Incoterms

8. Reason for export

I/We hereby certify that the information contained in this invoice is true and correct and that the contents of the shipments are as stated above.

Position in company

Signature

Company stamp

HOW TO SHIP WITH DHL EXPRESS

Connecting Your World
Sustainability
Service Offering
► How to Ship with DHL Express
Digitalization
Zones and Rates

Preparing Your Shipment

Packaging Your Shipment

Paying for Your Shipment

PREPARING YOUR SHIPMENT INVOICE

COMMERCIAL INVOICE								
SENDER				GENERAL INFORMATION				
Company Name: Contact Name: Building Name: Street Name & Number: Postcode: City/Country: Business/Private: Phone: Email: Tax ID/VAT Number: EORI Number:				Date: Waybill Number: Invoice Number: Shipment Reference Number: Receiver Reference Number:				
RECEIVER				BILLED TO/IMPORTER OF RECORD (IOR) <i>(if different from Receiver)</i>				
Company Name: Contact Name: Building Name: Street Name & Number: Postcode: City/Country: Business/Private: Phone: Email: Tax ID/VAT Number: EORI Number:				Company Name: Contact Name: Building Name: Street Name & Number: Postcode: City/Country: Business/Private: Phone: Email: Tax ID/VAT Number: EORI Number:				
OTHER REMARKS								
Please add any additional critical information or specific country clearance requirements that might be relevant e.g. bank details, special formalities etc.								
Line Number	Full Description of Goods	Commodity Code <small>(Full Import HS Code Preferred)</small>	Country of Origin	Qty	Unit Value & Currency	Sub-Total Value & Currency	Net Weight	Gross Weight
1								
2								
3								
						Total Goods Value & Currency	Total Net Weight	Total Gross Weight
Number of Invoice Line Items:								
Total Units:								
Number of Pieces:								
Reason for Export:								
Type of Export:								
INCOTERM:								
INCOTERM Place:								
Carrier:								
Ultimate Consignee:								
Export License Number:								
Import License Number:								
Insurance Cost:								
Freight Cost:								
Other Costs:								
VALUE (for Customs Purposes):								
Import Customs Duties – pre calculated								
Import Taxes (VAT/GST) – pre calculated								
TOTAL (with Import Customs Duties/Taxes):								
Terms of Payment:								
Payer of GST/VAT:								
Duty/Tax Billing Svc:								
I/we certify the information on this invoice is true and correct and that the contents of this shipment are as stated above.								
Name: _____			Title: _____			Email: _____		
Date: _____			Signature: _____					



HOW TO SHIP WITH DHL EXPRESS

Connecting Your World

Sustainability

Service Offering

► How to Ship with DHL Express

Digitalization

Zones and Rates

Preparing Your Shipment

Packaging Your Shipment

Paying for Your Shipment

PACKAGING YOUR SHIPMENT

To ensure that your shipments travel safely and securely through the DHL Express global network, it is important that they are packaged and labeled correctly.

Packaging guidelines

- If you are re-using envelopes or boxes, please ensure that old labels and markings are removed
- Securely fix a waybill to each piece in your shipment. The waybill can be thought of as the shipment's airline ticket and it will delay delivery if it becomes separated from your shipment
- The barcodes on the waybill are scanned at numerous points during your shipment's journey. Please ensure the barcode is flat and not covered by tape, shrinkwrap or strapping
- Place a waybill on the top or side of each piece in your shipment and please ensure it does not overlap the corners or edges of boxes
- Use adequate protective wrapping for fragile or delicate items and ensure they are packed as far away as possible from the corners of boxes
- To prevent injury to our employees, please pay special attention to the packaging of sharp items. There should not be any possibility of the contents piercing the packaging
- Any individual pieces over 70kg should be placed on a pallet. If you are sending a multi-piece shipment, it is not necessary to place the individual pieces on a pallet unless they exceed 70kg. For example, a shipment comprising four 25kg pieces does not have to be placed on a pallet

DHL packaging

We offer a range of high-quality DHL-branded packaging items, suitable for shipping items of all shapes and sizes.

The items available include:

- Flyer bags
- Cardboard document envelopes
- Boxes in a range of sizes
- Tubes
- Bottle boxes

For more information on the range of packaging available, please contact your DHL Account Manager or local Customer Service team.

Prohibited and Restricted Commodities*

Prohibited Items

1. Animals, fish, birds (live) (Including mammals, reptiles, spiders, fish and birds).
2. Human remains or ashes in any form. This includes human embryos, placenta and ashes formed as gemstones.
3. Precious metals and bullions (in ingots, coins, etc.); precious and semi-precious stones; articles of precious metals and bullions, precious and semi-precious stones.
4. Cash (bank notes, currency notes and coins).

5. Military items: firearms and edged weapons, ready for use for their intended purpose; explosives; ammunition; shells; cartridges; explosive devices containing substances that are resistant to storage and transportation, etc.; parts, mechanisms of firearms, accessories (sight, trigger, bolts and nuts, mounts, sights, night vision devices, butts, silencers, flashlights, magazines, flash silencers and unmasking devices, etc.); other military items subject to control/licensing (items "designed or modified for military use", namely: spare parts for tanks and anti-aircraft missiles, control panels, navigation equipment, control units, ammunition counters, fire control device, instrumentation sensors speed, spare parts and components designed or modified for military use, spare parts or equipment for aircraft and helicopters designed or modified for military use, etc.).
6. Ivory and illegal goods. Any goods considered to be illegal (as determined either by the exporting country, transit points, importing country or international law) are prohibited for carriage. E.g. pornography, pirated goods, goods certain narcotics (heroin, cocaine), counterfeit products, smoking blends containing the following ingredients: sage predictors (*Salvia divinorum*), hawaiian rose (*Argyrea nervosa*), blue lotus (*Nymphaea caerulea*).
7. Hunting trophies (animal skins, stuffed animals or birds, horns, skulls, etc.).
8. Toy and pneumatic guns.
9. Imitation or replica firearms, ammunition, explosives/explosive devices. Electrical shock equipment, guns with electrical shock, electric shockers or any other items capable of producing an electric discharge with the aim of causing harm, injury or temporary disablement (directly or indirectly intended for these purposes). Objects that may potentially be used as a weapon, but this is not their direct purpose (kitchen



*For more information on restricted commodities please contact your nearest DHL Express office.

HOW TO SHIP WITH DHL EXPRESS

Connecting Your World
Sustainability
Service Offering
► How to Ship with DHL Express
Digitalization
Zones and Rates

Preparing Your Shipment

Packaging Your Shipment

Paying for Your Shipment

- en knives), including decorative products (sabres, swords, etc.) are accepted for carriage without restrictions, but the sender shall attach the certificate /passport (with stamp), that the given object is not a cold weapon.*
10. Medicinal Cannabis.
11. Counterfeit goods in breach of IPR.

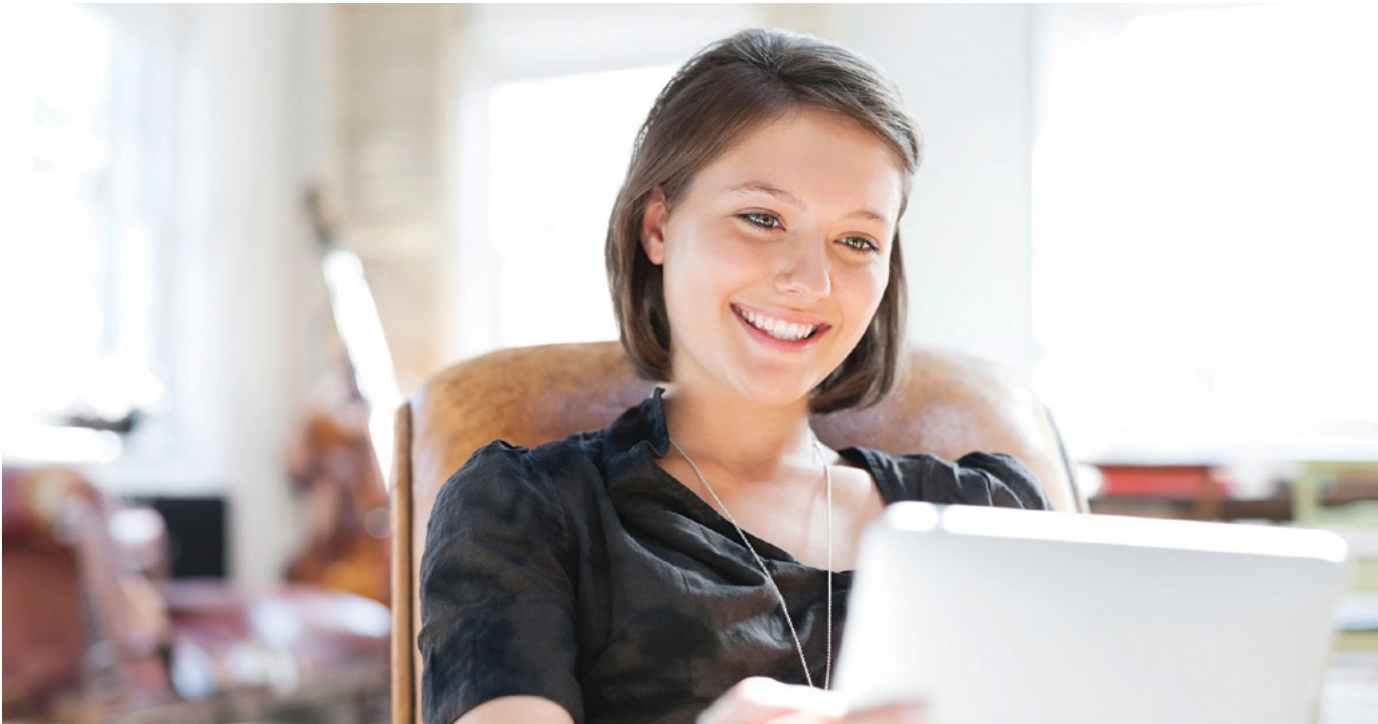
Restricted items.

1. Antiques and works of art.
2. Excise stamps/post stamps.
3. Raw tobacco and tobacco products (cigarettes, cigars, cigarillos, smoking and pipe tobacco, e-cigarettes and their components).
4. Negotiable instruments in bearer form (whether cash-like or not). E.g. activated SIM cards for mobile telephones, blank or activated credit or cash dispenser cards, blank checks, event tickets whether cash-like or not, lottery tickets, money or postal orders, pre-paid phone cards, tickets (blank stock), Traveller's Cheques, vouchers/tokens, unused stamps, gift cards etc. DHL prohibits the transportation of negotiable instruments (documents) to bearer. However, as an exception, certain approved customers who have significant volumes of cargo on DHL's network may be permitted to carry travelers checks and activated credit cards (GSOP Shipment and Product Handling Policy and Standards - Travelers Checks and Activated Credit Cards).

5. Perishable goods: plants seedlings, fresh vegetables and fruits, mushrooms, berries, grass, frozen food and food that require temperature maintenance, not placed in a thermal box.
6. Jewelry**** worth more than 100,000 euros** for the entire cargo for legal entities. For shipments to individuals, the limit is to exceed 25,000 euros** per shipment.
7. Watches without precious metals****. Individual items worth more than 100,000 euros** of total shipment value for legal entities. When shipped to private individuals, the value of total shipment is limited to 25,000 euros**. If the assessed value does not exceed specified limits, the watches are accepted without restrictions.*
8. Valuable collectibles, including but not limited to the first editions of books or comics, trade cards, worth more than 10,000 euros** the total shipment value for legal entities. When shipped to private individuals, the value of total shipment is limited to 2,000 euros.**

PAYING FOR YOUR SHIPMENT

You can pay for DHL Express services either with cash or a credit card***. You can open an account with DHL Express to pay via bank transfer; and all account customers receive invoices on a pre-agreed basis. For more details, please get in touch with a Customer Service Advisor at your local DHL Express office or go to express.dhl.ru/en.



* Prohibited to import to Russia
** Or equivalent in RUB.
*** Availability of payment in cash or by credit card to the courier is limited.
For more information on restricted commodities please contact your nearest DHL Express office.
**** Special conditions of shipping are applied for customers.
The maximum value of the shipment for cash customers should not exceed 10,000 euros**. Extended liability is available only for sending shipments worth up to 10,000 euros**.

DIGITALIZATION

Connecting your World

Sustainability

Service Offering

How to Ship with DHL Express

► Digitalization

Zones and Rates

Digitalization is one of the most important trends impacting logistics, and it is one of the key pillars of DHL's Strategy 2025. Through digitalization we bring benefits for our customers, our operations and our own people.

We invest continually in market-leading technologies to help our customers to manage and monitor shipments, create shipping labels, get quotes, schedule courier pickups, connect with us and more. Digitalizing our operations provides more transparency, allowing us to better anticipate and meet our customers' needs.

MYDHL+

MyDHL+ re-imagines the way the shipping business does business, by combining the tools and services our customers use most. With its mobile friendly and intuitive interface, customers can now import, export, schedule a pickup, track shipments and pay bills more quickly than ever – all in one visit, with one password and zero headaches. MyDHL+ makes it incredibly easy to navigate the complexities of international shipping.

mydhl.express.dhl

MyGTS

MY GLOBAL TRADE SERVICES

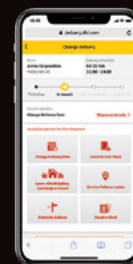
My Global Trade Services (MyGTS) is your trusted advisor for cross-border trade – taking the complexity out of customs. If you are wondering what the harmonized shipping (HS) codes are for your goods, what the estimated total cost of your shipment will be, what can help get your goods cleared, and what documentation may be required, find the answers to these questions and more on our online MyGTS portal.

And the benefits for you? You can support clearing customs more quickly and more accurately, help avoid delays and unexpected customs or tax costs, and pre-plan your shipment journeys so that you understand potential prohibitions and restrictions.

dhl.com/express/mygts

ON DEMAND DELIVERY

DHL's On Demand Delivery tool keeps receivers informed of shipment progress, allowing them to reschedule, reroute, release or conveniently collect from a DHL Service Point. It is an innovative, easy-to-use, mobile-friendly service, especially for residential deliveries.


ondemand.dhl.com

Designed to enhance the online shopper's experience, the service is available globally, meaning consistent service standards and a harmonized user experience.



Scheduled delivery



Signature release/leave your signature



Alternative address



Collect from Service Point



Vacation hold



Leave with neighbor

DHL EXPRESS COMMERCE

Take your website international with DHL Express Commerce. Offer your customers all the benefits of DHL Express at your checkout in real-time. Import, manage and ship their orders quickly and efficiently with no complicated development. Add the power of DHL Express to your e-commerce business quickly and easily, giving you the competitive edge.



DIGITALIZATION

[Connecting your World](#)
[Sustainability](#)
[Service Offering](#)
[How to Ship with DHL Express](#)
[► Digitalization](#)
[Zones and Rates](#)


EXPRESS.DHL.RU

Our website provides a comprehensive guide to DHL Express shipping services, as well as transport news, service updates and contact details. To make doing business with us even easier, the site features interactive tools that include online booking, tracking and a volumetric weight calculator.



ROBOTICS

Driven by rapid technological advancements and increasing supply chain complexity, robotics solutions are entering the logistics environment, boosting productivity and driving zero-defect processes.

Robots are adopting more roles at DHL Express, assisting workers with the most repetitive and labor-intensive tasks and freeing them up to do higher-order, customer-facing activities. Examples include the use of articulated robotic arms for sorting inbound packages to last-mile delivery routes. We have four such robots in use globally, with this number set to double soon.

Our robots help get couriers out on the road faster – which means your parcels get delivered faster.

DIGITAL TRUST

Logistics requires transferring data and content around the world and we embrace a responsibility to do this securely. Our standards led by our Binding Corporate Rules and by our [Data Privacy Policy](#) apply throughout the DHL Group and are approved by the Supervisory Authorities. We aim to provide a rapid response to any security incident via our 24x7 Cyber Defence Centre (CDC) with global coverage and our global DPO community.

DHL Group acts as controller in respect of any personal data it receives from customers and holds to effectively provide transportation services and in regard to the delivery of any shipments or documents that it processes to perform its contractual obligations. DHL Group will act as a data controller when an individual is executing their rights under privacy legislations.

ZONES AND RATES

Connecting Your World
Sustainability
Service Offering
How to Ship with DHL Express
Digitalization
► Zones and Rates

Calculate the Price of Your Shipment	Optional Services	Surcharges	Customs Services	Service Capability and Rating Zones	Export Services
--------------------------------------	-------------------	------------	------------------	-------------------------------------	-----------------

OPTIONAL SERVICES

Optional Services*	How we charge	Additional charge
GOGREEN Plus	Per kg	For every full or partial kg, depending on the region of origin and destination in accordance with the matrix on p. 7***
Dedicated Pickup / Saturday Pick up	Per kg; per shipment	Holiday pickup **** the tariff is 45 RUB per kg, min. 2 880 RUB** per shipment; and Saturday pickup the tariff is 2 880 RUB**
Saturday Delivery	Per shipment	The tariff is 3 840 RUB**
Shipment Insurance	Per shipment	1% of declared value, minimum charge is 1 000 RUB***
Extended Liability	Per shipment	The tariff is 480 RUB***
Shipment Preparation	Per shipment	The tariff is 640 RUB***
Packaging	Per shipment	The tariff depends on the type of packaging ¹
Duty Tax Paid	Per shipment	2% of customs duties and taxes, minimum charge is 1 550 RUB***
Verbal Notification	Per shipment	The tariff is 480 RUB***
Residential Address	Per shipment	The tariff is 500 RUB**
Direct Signature	Per shipment	The tariff is 500 RUB***
Adult Signature	Per shipment	The tariff is 500 RUB***
Change of Billing	Per bill	The tariff is 1 900 RUB***

CUSTOMS SERVICES

Customs Services	How we charge	Additional charge
Formal Clearance	Per shipment	Depends on shipment value
Representing of Represented Entity within additional control of functional departments of Customs	Per shipment	The tariff is 2 900 RUB***
Bonded Storage	Per shipment	8.0 RUB/kg/day and 520 RUB/shipment/day starting from the 4th day of storage***
Export Declaration	Per shipment	Minimum 19 600 RUB if shipment value is more than 1 000 EUR***
Non-Routine Entry	Per shipment	Minimum 8 200 RUB***
Physical Intervention	Per shipment	The tariff is 2 800 RUB***

¹ The cost of packaging provided upon shipment pickup will be 260 RUB (except for smartphone/laptop/tablet computer boxes).***
* For more information on the availability of these services in your location please contact your nearest DHL office. Please make a request for these optional services when booking DHL courier. DHL reserves the right to apply additional charges for these services as well as any not shown in this guide.
** All rates are stated in RUB exclusive of VAT and fuel surcharge.
*** All rates are stated in RUB exclusive of VAT.
**** The extra charge will be applied to all cash/credit cards shipments.

ZONES AND RATES

Connecting Your World
Sustainability
Service Offering
How to Ship with DHL Express
Digitalization
► Zones and Rates

Calculate the Price of Your Shipment	Optional Services	Surcharges	Customs Services	Service Capability and Rating Zones	Export Services
--------------------------------------	-------------------	------------	------------------	-------------------------------------	-----------------

SURCHARGES

Surcharges*	How we charge	Additional charge
Fuel Surcharge	Variable surcharge	Updated information about Fuel Surcharge is posted monthly at https://express.dhl.ru/en/info/toplivnaya-nadbavka/ . DHL Express reserves the right to change the value of Fuel Surcharge and apply it without notice. DHL Express defines the value and effective period of Fuel Surcharge at their sole discretion.
Remote Area	Per shipment; per kg	The tariff is 50 RUB per kg, minimum 2 100 RUB per shipment.**
Overweight Piece	Per piece	The tariff is 9 120 RUB**
Oversize Piece	Per piece	The tariff is 4 800 RUB**
Non Stackable Pallet	Per piece	The tariff is 26 400 RUB**
Emergency Situation Surcharge	Per shipment	Information about ESS is posted at https://express.dhl.ru/en/info/dop/ . ESS can be adjusted as market conditions evolve for the duration of this emergency situation.
Dry Ice	Per shipment	The tariff is 9 000 RUB***
Shipping Lithium Batteries****	Per shipment	The tariff is 2 000 RUB***
Address Correction	Per shipment	The tariff is 1 100 RUB***
Data Entry	Per shipment	The tariff is 960 RUB***
Restricted Destination	Per shipment	The tariff is 2 880 RUB***
Elevated Risk	Per shipment	The tariff is 2 880 RUB**

* For more information on the availability of these services in your location please contact your nearest DHL office. Please make a request for these optional services when booking DHL courier. DHL reserves the right to apply additional charges for these services as well as any not shown in this guide.

** All rates are stated in RUB exclusive of VAT and fuel surcharge.

*** All rates are stated in RUB exclusive of VAT.

**** Please alert DHL Express whenever you plan to send any shipments containing lithium batteries. Our team of professionals will be happy to advise you on the updated IATA rules of dangerous goods transportation.

ZONES AND RATES

Connecting Your World

Sustainability

Service Offering

How to Ship with DHL Express

Digitalization

► **Zones and Rates**Calculate the Price
of Your ShipmentOptional
Services

Surcharges

Customs
ServicesService Capability
and Rating ZonesExport
Services

CALCULATE THE PRICE OF YOUR SHIPMENT



Determine which zone your destination is in (pages [22-23](#) and [27-37](#)) and whether yours is a document or non-document shipment.



Choose the type of export service (page [5](#)) and how quickly do you want it to arrive?



Based on weight (page [12](#)), zone and speed, confirm your base price.



Add any optional services and check if any surcharges apply.

Base price + Optional services + Surcharges = **Total price**

RATE ZONES FOR INTERNATIONAL DELIVERY

Russian rate zone ¹	International rate zone ¹							
	I	II	III	IV	V	VI	VII	VIII
European Russia (Central, Northwestern, Volga ² , Southern, North Caucasian Federal Districts): zones 1–12	1	2	3	4	5	6	7	8
Urals and Siberia (Urals and Siberian Federal Districts, Perm Krai): zones 13–17	1	3	3	4	5	4	7	8
Russian Far East (Far Eastern Federal District): zones 18–19	2	4	6	7	5	3	4	8

¹ Check the rate zone for your city within Russia on pages 27–37. Check the rate zone for your country where you plan pick up or delivery of your shipment on pages 22–23.

² Except Perm Krai.

ZONES AND RATES

Connecting Your World
Sustainability
Service Offering
How to Ship with DHL Express
Digitalization
► Zones and Rates

Calculate the Price of Your Shipment	Optional Services	Surcharges	Customs Services	Service Capability and Rating Zones	Export Services
--------------------------------------	-------------------	------------	------------------	-------------------------------------	-----------------

INTERNATIONAL EXPORT DELIVERY: SERVICE CAPABILITY AND RATING ZONES*

Country	Zone	DHL Express Worldwide**	DHL Express 12:00	DHL Express 9:00
Albania	IV	5		
Algeria	VII	4		
American Samoa	VIII	8		
Andorra	IV	4		
Angola	VIII	7	✓	
Anguilla	VIII	7		
Antigua	VIII	7		
Argentina	VIII	5	✓	
Armenia	II	6		
Aruba	VIII	7		
Australia	VIII	8		
Austria	III	4	✓	
Azerbaijan	II	4		
Bahamas	VIII	8		
Bahrain	VII	3	✓	
Bangladesh	VII	4		
Barbados	VIII	6		
Belgium	III	4	✓	✓
Belize	VIII	7		
Benin	VIII	4		
Bermuda	VIII	6		
Bhutan	VII	8		
Bolivia	VIII	7		
Bonaire	VIII	7		
Bosnia and Herzegovina	IV	4		
Botswana	VIII	7		
Brazil	VIII	5	✓	
Brunei	VII	7		
Bulgaria	IV	5	✓	
Burkina Faso	VIII	7	✓	
Burundi	VIII	7		
Cambodia	VII	7	✓	
Cameroon	VIII	6	✓	
Canada	V	5	✓	
Canary Islands, The	IV	4		
Cape Verde	VIII	12		
Cayman Islands	VIII	6		
Central African Republic	VIII	17		
Chad	VIII	14		
Chile	VIII	5		
China, People's Republic	VI	5	✓	
Colombia	VIII	5	✓	
Comoros	VIII	11		
Congo	VIII	6	✓	
Congo, The Democratic Republic of	VIII	6	✓	
Cook Islands	VIII	8		
Costa Rica	VIII	5		
Cote d'Ivoire	VIII	5	✓	
Croatia	IV	4		
Cuba	VIII	8		
Curacao	VIII	7		
Cyprus	IV	5	✓	
Czech Republic, The	III	4	✓	
Denmark	IV	4	✓	✓
Djibouti	VIII	7		
Dominica	VIII	7		
Dominican Republic	VIII	7		
Ecuador	VIII	5		

Country	Zone	DHL Express Worldwide**	DHL Express 12:00	DHL Express 9:00
Egypt	VII	3	✓	✓
El Salvador	VIII	8		
Eritrea	VIII	8		
Estonia	III	4	✓	
Eswatini	VIII	7		
Ethiopia	VIII	5		
Falkland Islands	VIII	6		
Faroe Islands	VIII	6		
Fiji	VIII	8		
Finland	III	4	✓	
France	III	4	✓	✓
French Guyana	VIII	8		
Gabon	VIII	6	✓	
Gambia	VIII	7		
Georgia	II	5		
Germany	III	4	✓	✓
Ghana	VIII	6		
Gibraltar	IV	4		
Greece	IV	4	✓	
Greenland	VIII	6		
Grenada	VIII	6		
Guadeloupe	VIII	6		
Guam	VIII	8		
Guatemala	VIII	5		
Guernsey	IV	4	✓	✓
Guinea Republic	VIII	5		
Guinea-Bissau	VIII	11		
Guinea-Equatorial	VIII	10		
Guyana (British)	VIII	7		
Haiti	VIII	7		
Honduras	VIII	6		
Hong Kong SAR China	VI	4	✓	
Hungary	III	4	✓	
Iceland	VIII	5	✓	
India	VI	4	✓	
Indonesia	VII	4		
Iran (Islamic Republic of)	VIII	7	✓	
Iraq	VII	6		
Ireland, Republic Of	III	4	✓	✓
Israel	VI	4		
Italy	III	4	✓	
Jamaica	VIII	6		
Japan	VI	5		
Jersey	IV	4		
Jordan	VII	3	✓	
Kazakhstan	I	7	✓	
Kenya	VIII	4	✓	
Kiribati	VIII	11		
Korea, Republic of (South)	VI	5	✓	
Korea, The D.P.R of (North)***	VII	8		
Kosovo	IV	6		
Kuwait	VII	4	✓	
Kyrgyzstan	I	5		
Lao People's Democratic Republic	VII	7		
Latvia	III	4		
Lebanon	VII	4	✓	✓
Lesotho	VIII	7		
Liberia	VIII	7		

* The average transit time is indicated in business days for “express documents” without commercial value, when sent from Moscow. Add 1-4 days when sending from other locations. Delivery time may increase due to customs procedures. Service capability may change. For more information about the possibility of providing services in your city and destinations, as well as delivery date and the ability to send specific shipment you can contact your local DHL office, customer service department by contact numbers +7 (495) 956-1000 and 8 (800) 7000-345 or visit dct.dhl.com.

** Average transit time (business days following the day of pick up).

*** Import Express is not available

ZONES AND RATES

Connecting Your World
Sustainability
Service Offering
How to Ship with DHL Express
Digitalization
► Zones and Rates

Calculate the Price of Your Shipment	Optional Services	Surcharges	Customs Services	Service Capability and Rating Zones	Export Services
--------------------------------------	-------------------	------------	------------------	-------------------------------------	-----------------

INTERNATIONAL EXPORT DELIVERY: SERVICE CAPABILITY AND RATING ZONES*

Country	Zone	DHL Express Worldwide**	DHL Express 12:00	DHL Express 9:00
Libya	VII	10		
Liechtenstein	III	6		
Lithuania	III	5	✓	
Luxembourg	III	4	✓	✓
Macau SAR China	VII	7		
Madagascar	VIII	7	✓	
Malawi	VIII	7		
Malaysia	VII	4	✓	
Maldives	VIII	10		
Mali	VIII	6		
Malta	IV	4		
Mariana Islands	VIII	8		
Marshall Islands	VIII	10		
Martinique	VIII	6		
Mauritania	VIII	8		
Mauritius	VIII	4		
Mayotte	VIII	11		
Mexico	VIII	5		
Micronesia, Federated States of	VIII	12		
Moldova, Republic Of	II	4		
Monaco	III	6		
Mongolia	VII	6		
Montenegro, Republic of	IV	5		
Montserrat	VIII	7		
Morocco	VII	4		
Mozambique	VIII	9	✓	
Myanmar	VII	6		
Namibia	VIII	7	✓	
Nauru, Republic Of	VIII	12		
Nepal	VII	7		
Netherlands, The	III	4	✓	✓
Nevis	VIII	7		
New Caledonia	VIII	11		
New Zealand	VIII	6		
Nicaragua	VIII	6		
Niger	VIII	8		
Nigeria	VIII	5		
Niue	VIII	11		
North Macedonia	IV	5		
Norway	IV	5	✓	
Oman	VII	4		
Pakistan	VII	4		
Palau	VIII	11		
Panama	VIII	5	✓	
Papua New Guinea	VIII	8		
Paraguay	VIII	5	✓	
Peru	VIII	5	✓	
Philippines, The	VII	5	✓	
Poland	III	4	✓	
Portugal	IV	4	✓	
Puerto Rico	VIII	6		
Qatar	VII	4	✓	✓
Reunion, Island Of	VIII	7		
Romania	IV	5		
Rwanda	VIII	7		
Saint Helena	VIII	10		
Salvador	VIII	5		
Samoa	VIII	7		

Country	Zone	DHL Express Worldwide**	DHL Express 12:00	DHL Express 9:00
San Marino	III	5		
Sao Tome and Principe	VIII	7		
Saudi Arabia	VII	4	✓	
Senegal	VIII	6		
Serbia, Republic of	IV	4		
Seychelles	VIII	4		
Sierra Leone	VIII	7		
Singapore	VII	4	✓	
Slovakia	IV	4	✓	✓
Slovenia	IV	4	✓	
Solomon Islands	VIII	13		
Somalia	VIII	11		
Somaliland, Rep of (North Somalia) ***	VIII	10		
South Africa	VIII	4	✓	✓
South Sudan	VIII	8		
Spain	III	4	✓	
Sri Lanka	VII	5		
St. Barthelemy	VIII	7		
St. Eustatius	VIII	7		
St. Kitts	VIII	6		
St. Lucia	VIII	7		
St. Maarten	VIII	7		
St. Vincent	VIII	7		
Sudan	VIII	7		
Suriname	VIII	7		
Sweden	III	4	✓	✓
Switzerland	III	4	✓	✓
Syria	VII	13		
Tahiti	VIII	6		
Taiwan	VI	4	✓	✓
Tajikistan	II	5		
Tanzania	VIII	7		
Thailand	VII	5	✓	✓
Timor-Leste	VIII	8		
Togo	VIII	6		
Tonga	VIII	11		
Trinidad and Tobago	VIII	6		
Tunisia	VII	6		
Turkey	III	4		
Turkmenistan	VIII	9		
Turks and Caicos Islands	VIII	7		
Tuvalu	VIII	11		
Uganda	VIII	5		
United Arab Emirates	VII	3	✓	✓
United Kingdom	III	4	✓	✓
United States Of America	V	5	✓	
Uruguay	VIII	5		
Uzbekistan	II	6		
Vanuatu	VIII	14		
Vatican City	III	5		
Venezuela	VIII	8		
Vietnam	VII	5		
Virgin Islands (British)	VIII	6		
Virgin Islands (US)	VIII	7		
Yemen, Republic of	VII	7		
Zambia	VIII	5	✓	
Zimbabwe	VIII	7		

* The average transit time is indicated in business days for “express documents” without commercial value, when sent from Moscow. Add 1-4 days when sending from other locations. Delivery time may increase due to customs procedures. Service capability may change. For more information about the possibility of providing services in your city and destinations, as well as delivery date and the ability to send specific shipment you can contact your local DHL office, customer service department by contact numbers +7 (495) 956-1000 and 8 (800) 7000-345 or visit dct.dhl.com.

** Average transit time (business days following the day of pick up).

*** Import Express is not available

ZONES AND RATES

Connecting Your World
Sustainability
Service Offering
How to Ship with DHL Express
Digitalization
► Zones and Rates

Calculate the Price of Your Shipment	Optional Services	Surcharges	Customs Services	Service Capability and Rating Zones	Export Services
--------------------------------------	-------------------	------------	------------------	-------------------------------------	-----------------

DHL EXPRESS WORLDWIDE EXPORT

Calculating the rate:

1. Check the destination countries available for this service in the table on pages 22–23.
2. Using the table “Rating Zones” on pages 27–37 identify Russian rate zone for your location.
3. Identify rate zone number of the destination country in the table on pages 22–23.
4. Reading across numbers of rate zones for origin location and destination country using a table “Rate zones for international delivery” on page 21 identify rate zone.
5. In the table on the page 25 indicate the weight nearest to the weight of your shipment.
6. Reading across from the weight indicator to rate zone will give you the rate for sending your shipment.

Example:

To send your 7 kg parcel using DHL EXPRESS Worldwide from Ekaterinburg to China:

1. Check whether the service is available to China. The answer is yes.
2. In the list of served locations identify rating zone for Ekaterinburg. It is zone 13.
3. Identify zone number for China. It is zone VI.
4. In the table «Rate zones for international delivery» the intersection of Russian rating zone 13 and international rating zone VI gives zone 4.
5. The intersection of zone 4 and 7 kg weight in the table on the page 25 shows the rate.
6. The rate for your shipment is 46 590 RUB.

ZONES AND RATES

Connecting Your World
Sustainability
Service Offering
How to Ship with DHL Express
Digitalization
► Zones and Rates

Calculate the Price of Your Shipment	Optional Services	Surcharges	Customs Services	Service Capability and Rating Zones	Export Services
--------------------------------------	-------------------	------------	------------------	-------------------------------------	-----------------

Service Rates*

DHL EXPRESS WORLDWIDE EXPORT

Weight ¹ in kg	Zone 1	Zone 2	Zone 3	Zone 4	Zone 5	Zone 6	Zone 7	Zone 8
Documents only up to 2 kg								
0.3*	7,980	10,750	11,270	13,030	12,140	15,340	19,520	22,290
0.50	8,750	11,440	12,100	13,790	13,120	16,480	20,560	23,420
1.00	11,280	14,220	15,610	17,350	16,740	20,270	24,450	28,000
1.50	12,980	16,430	18,190	20,010	19,900	23,770	28,160	32,020
2.00	14,680	18,640	20,770	22,670	23,060	27,270	31,870	36,040
Documents from 2.5 kg and non-documents** from 0.5 kg								
0.50	9,840	12,440	13,350	14,420	14,880	18,130	21,780	25,390
1.00	12,740	15,580	16,900	18,040	18,760	22,100	26,090	30,870
1.50	14,290	17,630	19,260	20,570	21,720	25,560	29,920	35,100
2.00	15,840	19,680	21,620	23,100	24,680	29,020	33,750	39,330
2.50	17,260	21,680	23,970	25,690	27,640	32,180	37,650	43,830
3.00	18,600	23,680	26,350	28,190	30,540	35,140	41,470	48,160
3.50	19,940	25,680	28,730	30,690	33,440	38,100	45,290	52,490
4.00	21,280	27,680	31,110	33,190	36,340	41,060	49,110	56,820
4.50	22,620	29,680	33,490	35,690	39,240	44,020	52,930	61,150
5.00	23,960	31,680	35,870	38,190	42,140	46,980	56,750	65,480
5.50	25,300	33,460	37,910	40,290	44,290	49,860	60,410	69,710
6.00	26,640	35,240	39,950	42,390	46,440	52,740	64,070	73,940
6.50	27,980	37,020	41,990	44,490	48,590	55,620	67,730	78,170
7.00	29,320	38,800	44,030	46,590	50,740	58,500	71,390	82,400
7.50	30,660	40,580	46,070	48,690	52,890	61,380	75,050	86,630
8.00	32,000	42,360	48,110	50,790	55,040	64,260	78,710	90,860
8.50	33,340	44,140	50,150	52,890	57,190	67,140	82,370	95,090
9.00	34,680	45,920	52,190	54,990	59,340	70,020	86,030	99,320
9.50	36,020	47,700	54,230	57,090	61,490	72,900	89,690	103,550
10.00	37,360	49,480	56,270	59,190	63,640	75,780	93,350	107,780
10.50	38,490	50,770	57,860	60,810	65,310	77,750	96,050	110,950
11.00	39,620	52,060	59,450	62,430	66,980	79,720	98,750	114,120
11.50	40,750	53,350	61,040	64,050	68,650	81,690	101,450	117,290
12.00	41,880	54,640	62,630	65,670	70,320	83,660	104,150	120,460
12.50	43,010	55,930	64,220	67,290	71,990	85,630	106,850	123,630
13.00	44,140	57,220	65,810	68,910	73,660	87,600	109,550	126,800
13.50	45,270	58,510	67,400	70,530	75,330	89,570	112,250	129,970
14.00	46,400	59,800	68,990	72,150	77,000	91,540	114,950	133,140
14.50	47,530	61,090	70,580	73,770	78,670	93,510	117,650	136,310
15.00	48,660	62,380	72,170	75,390	80,340	95,480	120,350	139,480
15.50	49,790	63,670	73,760	77,010	82,010	97,450	123,050	142,650
16.00	50,920	64,960	75,350	78,630	83,680	99,420	125,750	145,820
16.50	52,050	66,250	76,940	80,250	85,350	101,390	128,450	148,990
17.00	53,180	67,540	78,530	81,870	87,020	103,360	131,150	152,160
17.50	54,310	68,830	80,120	83,490	88,690	105,330	133,850	155,330
18.00	55,440	70,120	81,710	85,110	90,360	107,300	136,550	158,500
18.50	56,570	71,410	83,300	86,730	92,030	109,270	139,250	161,670
19.00	57,700	72,700	84,890	88,350	93,700	111,240	141,950	164,840
19.50	58,830	73,990	86,480	89,970	95,370	113,210	144,650	168,010
20.00	59,960	75,280	88,070	91,590	97,040	115,180	147,350	171,180
+0.50	1,090	1,220	1,350	1,530	1,620	1,860	2,380	2,670
30.00	81,760	99,680	115,070	122,190	129,440	152,380	194,950	224,580
+1.00	1,470	1,800	2,210	2,300	2,700	3,090	4,050	4,870
40.00	96,460	117,680	137,170	145,190	156,440	183,280	235,450	273,280
+1.00	1,470	1,800	2,210	2,300	2,700	3,090	4,050	4,870
50.00	111,160	135,680	159,270	168,190	183,440	214,180	275,950	321,980
+1.00	1,470	1,800	2,210	2,300	2,700	3,090	4,050	4,870
70.00	140,560	171,680	203,470	214,190	237,440	275,980	356,950	419,380
+1.00	2,110	2,500	3,040	3,180	3,640	4,160	5,180	5,510
300.00	625,860	746,680	902,670	945,590	1,074,640	1,232,780	1,548,350	1,686,680
+1.00	2,330	2,770	3,360	3,520	4,020	4,580	5,710	6,150
1000.00	2,256,860	2,685,680	3,254,670	3,409,590	3,888,640	4,438,780	5,545,350	5,991,680

Available up to 1000 kg shipment weight

¹ DHL's shipment charges are calculated according to the higher of actual or volumetric weight of each cargo place. The weight shall be rounded up to the value divisible by 0.5 kg (for weighing less 30 kg) and 1 kg (for shipments weighing more than 30 kg). For example: 2.1 kg shall be rounded up to 2.5 kg, and 31.2 kg shall be rounded up to 32 kg. Attention! The minimal chargeable weight for the delivery of documents with no commercial value at DHL EXPRESS WORLDWIDE EXPORT rates shall be 0.3 kg. For all other shipments the minimum chargeable weight is 0.5 kg.

* All rates are stated in roubles exclusive of VAT and fuel surcharge. Rates for specific weights not shown in the table above are available on request in your nearest DHL office. DHL is entitled to change its rates on its sole discretion.

** Shipments qualified as "Documents" shall mean "Express documents" with no commercial value. Shipments which are not qualifying for "Express documents" are to be "Other shipments". Please be advised that "Documents" and "Other shipments" definitions are subjects to legal requirements of the country of destination.

Connecting Your World
Sustainability
Service Offering
How to Ship with DHL Express
Digitalization
► Zones and Rates

ZONES AND RATES

Calculate the Price of Your Shipment	Optional Services	Surcharges	Customs Services	Service Capability and Rating Zones	Export Services
--------------------------------------	-------------------	------------	------------------	-------------------------------------	-----------------

RATING ZONES*

- | | |
|--|---|
| 1. Moscow, Moscow region | 11. Astrakhan Region, North Caucasian Federal District, |
| 2. Central Federal District (except Moscow and Moscow Region), Vologda Region | 12. Orenburg Region, Republic of Bashkortostan** |
| 3. Saint Petersburg | 13. Perm Territory**, Sverdlovsk, Chelyabinsk** and Tyumen Regions |
| 4. Kirov, Nizhniy Novgorod, Penza Regions, Republic of Mari El, Republic of Mordovia, Republic of Tatarstan, Udmurtian Republic and Chuvash Republic | 14. Yamal-Nenets Autonomous Area, Khanty-Mansi Autonomous Area and Kurgan Region |
| 5. Novgorod, Pskov, Leningrad** Regions, Republic of Karelia, | 15. Novosibirsk, Omsk, Tomsk** Regions, Altai Territory, Republic of Altai |
| 6. Kaliningrad region*** | 16. Krasnoyarsk Territory**, Republic of Tuva, Republic of Khakassia, Kemerovo Region |
| 7. Samara Region | 17. Irkutsk Region, Trans-Baikal Territory, Republic of Buryatia |
| 8. Krasnodar Territory**, Rostov Region, Republic of Adygeya, Republic of Kalmykia | 18. Khabarovsk Territory, Jewish Autonomous Region, Primorsky Region |
| 9. Saratov, Ulyanovsk, Volgograd Regions | 19. Amur Region |
| 10. Arkhangelsk and Murmansk Regions, Komi Republic | |

* Service capability may change during the year. For more information please contact your nearest DHL office.
** Most of the locations in mentioned regions belong to stated rating zone. Exact information is in the table "Rating zones".
*** Temporary not serviced.

ZONES AND RATES

Connecting Your World
Sustainability
Service Offering
How to Ship with DHL Express
Digitalization
► Zones and Rates

Calculate the Price of Your Shipment	Optional Services	Surcharges	Customs Services	Service Capability and Rating Zones	Export Services
--------------------------------------	-------------------	------------	------------------	-------------------------------------	-----------------

RATING ZONES*

Location	Rating Zone	Remote Area
Ababurovo (Leninskiy distr., Moscow Region)	1	
Abakan (Republic of Khakassia)	16	
Abinsk (Krasnodar Territory)	8	
Achinsk (Krasnoyarsk Territory)	16	✓
Adler (Krasnodar Territory)	11	
Adygeysk (Krasnodar Territory)	8	
Aeroport (Tomsk Region)	15	
Afipskiy (Krasnodar Territory)	8	
Agidel (Republic of Bashkortostan)	12	✓
Agryz (Republic of Tatarstan)	4	✓
Akhtyrskiy (Krasnodar Territory)	8	✓
Akinshino (Naro-Fominsky distr., Moscow Region)	1	
Aksay (Rostov-on-Don Region)	8	
Akulovo (Moscow Region)	1	
Alabushevo (Moscow Region)	1	
Alapaevsk (Sverdlovsk Region)	13	✓
Aleksandrov (Vladimir Region)	2	✓
Aleksandrovo (Podolsky distr., Moscow Region)	1	
Aleksandrovsk (Perm Territory)	13	✓
Alekseevka (Alekseevskiy distr., Belgorod Region)	2	✓
Alekseevka (Kinel, Samara Region)	7	
Aleksin (Tula Region)	2	✓
Aleksandrovka (Zelenograd, Moscow)	1	
Aleksandrovskaya (Kurortnyi distr., St. Petersburg)	3	
Alexandrovskaya (Pushkinskiy distr., St. Petersburg)	3	
Aleysk (Altai Territory)	15	✓
Alkhimovo (Podolsky distr., Moscow Region)	1	
Almetyevsk (Republic of Tatarstan)	4	
Anapa (Krasnodar Territory)	8	
Andreevskoe (Leninskiy distr., Moscow Region)	1	
Andreevskoe (Podolsky distr., Moscow Region)	1	
Angarsk (Irkutsk Region)	17	
Ankudinovo (Naro-Fominsky distr., Moscow Region)	1	
Anna (Voronezh Region)	2	✓
Anzhero-Sudzhensk (Kemerovo Region)	16	✓
Aprelevka (Naro-Fominsk distr., Moscow Region)	1	
Apsheronsk (Krasnodar Territory)	8	✓
Aramil (Sverdlovsk Region)	13	
Arkhangelsk (Arkhangelsk Region)	10	
Arkhangelyskoe (Naro-Fominsk distr., Moscow Region)	1	✓
Armavir (Krasnodar Territory)	8	
Armazovo (Podolsky distr., Moscow Region)	1	
Arsk (Republic of Tatarstan)	4	
Artemovskiy (Sverdlovsk Region)	13	✓
Arzamas (Nizhniy Novgorod Region)	4	✓
Asbest (Sverdlovsk Region)	13	✓
Asha (Chelyabinsk Region)	12	✓

Location	Rating Zone	Remote Area
Astrakhan (Astrakhan Region)	11	
Atamanovka (Trans-Baikal Territory)	17	
Atkarsk (Saratov Region)	9	✓
Aznakaevo (Republic of Tatarstan)	4	
Azov (Rostov-on-Don Region)	8	
Bachurino (Leninskiy distr., Moscow Region)	1	
Baklanovo (Podolsky distr., Moscow Region)	1	
Baksan (Kabardino-Balkarian Republic)	11	✓
Balabanovo (Kaluga Region)	2	
Balakhna (Nizhniy Novgorod Region)	4	
Balakovo (Saratov Region)	9	✓
Balashikha (Moscow Region)	1	
Baranovo (Naro-Fominsky distr., Moscow Region)	1	
Barnaul (Altai Territory)	15	
Barsovo (Khanty-Mansi Autonomous Area – Yugra)	14	
Barysh (Ulyanovsk Region)	9	✓
Bataysk (Rostov-on-Don Region)	8	
Belaya Kalitva (Rostov-on-Don Region)	8	✓
Belebey (Republic of Bashkortostan)	12	✓
Belgorod (Belgorod Region)	2	
Belogorsk (Amur Region)	19	✓
Beloozerskiy (Voskresenskiy distr., Moscow Region)	1	✓
Belorechensk (Krasnodar Territory)	8	
Beloretsk (Republic of Bashkortostan)	14	✓
Belousovo (Kaluga Region)	2	
Belousovo (Naro-Fominsky distr., Moscow Region)	1	✓
Belovo (Kemerovo Region)	16	✓
Beloyarskiy (Sverdlovsk Region)	13	✓
Belozersk (Vologda Region)	2	✓
Beliy (Krasnodar Territory)	8	
Belyy Yar (Khanty-Mansi Autonomous Area – Yugra)	14	
Berdsk (Novosibirsk Region)	15	
Berezniki (Perm Territory)	13	
Berezovka (Krasnoyarsk Territory)	16	
Berezovka (Republic of Bashkortostan)	12	
Berezovskiy (Kemerovo Reg)	16	✓
Berezovskiy (Sverdlovsk Region)	13	
Beslan (Republic of North Ossetia – Alanian)	11	
Biofabrika (Orel Region)	2	
Birobidzhan (Jewish Autonomous Region)	18	✓
Birsk (Republic of Bashkortostan)	12	✓
Biysk (Altai Territory)	15	✓
Blagoveschensk (Amur Region)	19	
Blagoveschensk (Republic of Bashkortostan)	12	✓
Bobrov (Voronezh Region)	2	✓
Bodaybo (Irkutsk Region)	17	✓
Bogdanovich (Sverdlovsk Region)	13	✓

* Service capability includes large settlements only. For more information please contact your nearest DHL Express office.
✓ For remote area locations an additional tariff is applied.

ZONES AND RATES

Connecting Your World
Sustainability
Service Offering
How to Ship with DHL Express
Digitalization
► Zones and Rates

Calculate the Price of Your Shipment	Optional Services	Surcharges	Customs Services	Service Capability and Rating Zones	Export Services
--------------------------------------	-------------------	------------	------------------	-------------------------------------	-----------------

RATING ZONES*

Location	Rating Zone	Remote Area
Bogorodsk (Nizhny Novgorod Region)	4	
Bogotol (Krasnoyarsk Territory)	16	✓
Bolkhov (Orel Region)	2	✓
Bologoe (Tver Region)	2	✓
Bolshoe Pokrovskoe (Naro-Fominsky distr., Moscow Region)	1	
Bolshoe Svinorye (Naro-Fominsky distr., Moscow Region)	1	
Bolshoy Kamen (Primorye Territory)	18	
Bor (Nizhniy Novgorod Region)	4	
Bor (Volkhovskiy distr., Leningrad Region)	3	✓
Borisoglebsk (Voronezh Region)	2	✓
Borodino (Krasnoyarsk Territory)	16	✓
Borovichi (Novgorod Region)	5	✓
Borovsk (Kaluga Region)	2	
Botakovo (Naro-Fominsky distr., Moscow Region)	1	
Bratsk (Irkutsk Region)	17	
Bronnitsy (Moscow Region)	1	✓
Bryansk (Bryansk Region)	2	
Bugulma (Republic of Tatarstan)	4	
Buguruslan (Orenburg Region)	7	✓
Burtsevo (Leninskiy distr., Moscow Region)	1	
Burtsevo (Naro-Fominsky distr., Moscow Region)	1	
Butovo (Moscow)	1	
Buy (Kostroma Region)	2	✓
Buzuluk (Orenburg Region)	12	✓
Bylovo (Podolskiy distr., Moscow Region)	1	✓
Chapaevsk (Samara Region)	7	✓
Chaplygin (Lipetsk Region)	2	✓
Chaykovskiy (Udmurtian Republic)	4	✓
Chebarkul (Chelya binsk Region)	13	
Cheboksary (Chuvash Republic)	4	
Chekhov (Moscow Region)	1	
Chelyabinsk (Chelyabinsk Region)	13	
Cherepovets (Vologda Region)	2	
Cherepovo (Leninskiy distr., Moscow Region)	1	
Cherkessk (Karachayevo-Circassian Republic)	11	✓
Chernogorsk (Republic of Khakassia)	16	
Chernomorskiy (Krasnodar Territory)	8	✓
Chistopol (Republic of Tatarstan)	4	✓
Chita (Trans-Baikal Territory)	17	
Chudovo (Novgorod Region)	5	✓
Chufarovo (Ulyanovsk Region)	9	✓
Chusovoy (Perm Territory)	13	✓
Dagomys (Krasnodar Territory)	11	
Dankov (Lipetsk Region)	2	✓
Davlekanovo (Republic of Bashkortostan)	12	✓
Davydkovo (Naro-Fominsky distr., Moscow Region)	1	
Davydovo (Podolskiy distr., Moscow Region)	1	

Location	Rating Zone	Remote Area
Dedovsk (Moscow Region)	1	
Demyanovo (Klin distr., Moscow Region)	1	
Desna (Leninskiy distr., Moscow Region)	1	
Desnogorsk (Smolensk Region)	2	✓
Devyatskoe (Podolskiy distr., Moscow Region)	1	
Dimitrovgrad (Ulyanovsk Region)	9	✓
Divnogorsk (Krasnoyarsk Territory)	16	
Dmitrov (Moscow Region)	1	
Dmitrovka (Moscow)	1	✓
Dolgoprudniy (Moscow Region)	1	
Domodedovo (Moscow Region)	1	
Donetsk (Rostov-on-Don Region)	8	
Donskoy (Tula Region)	2	✓
Donskoy (Rostov-on-Don Region)	8	
Dubna (Moscow Region)	1	
Dubrovka (Moscow Region)	1	
Dudinka (Krasnoyarsk Territory)	16	✓
Dudkino (Leninskiy distr., Moscow Region)	1	
Dyatkov (Bryansk Region)	2	✓
Dyurtyuli (Republic of Bashkortostan)	12	✓
Dzerzhinsk (Irkutsk Region)	17	
Dzerzhinsk (Nizhniy Novgorod Region)	4	
Dzerzhinskiy (Moscow Region)	1	
Efremov (Tula Region)	2	✓
Egoryevsk (Moscow Region)	1	
Ekaterinburg (Sverdlovsk Region)	13	
Elabuga (Republic of Tatarstan)	4	
Elektrogorsk (Moscow Region)	1	✓
Elektrostal (Moscow Region)	1	
Elektrougli (Moscow Region)	1	
Elets (Lipetskaya Region)	2	✓
Elista (Republic of Kalmykia)	8	✓
Elizarovo (Naro-Fominsky distr., Moscow Region)	1	
Emelyanovo (Krasnoyarsk Territory)	16	
Emelyanovo (Vologda Region)	2	
Enem (Krasnodar Territory)	8	
Engels (Saratov Region)	9	
Eniseysk (Krasnoyarsk Territory)	16	✓
Ermolino (Kaluga Region)	2	
Essentuki (Stavropol Territory)	11	
Evseevo (Leninskiy distr., Moscow Region)	1	
Eysk (Krasnodar Territory)	8	
Filimonki (Leninskiy distr., Moscow Region)	1	
Filino (Podolskiy distr., Moscow Region)	1	
Fokino (Primorye Territory)	18	
Fokino (Bryansk Region)	2	✓
Fominskoe (Naro-Fominsky distr., Moscow Region)	1	

* Service capability includes large settlements only. For more information please contact your nearest DHL Express office.
✓ For remote area locations an additional tariff is applied.

ZONES AND RATES

Connecting Your World
Sustainability
Service Offering
How to Ship with DHL Express
Digitalization
► Zones and Rates

Calculate the Price of Your Shipment	Optional Services	Surcharges	Customs Services	Service Capability and Rating Zones	Export Services
--------------------------------------	-------------------	------------	------------------	-------------------------------------	-----------------

RATING ZONES*

Location	Rating Zone	Remote Area
Frolovo (Volgograd Region)	9	✓
Fryazino (Moscow Region)	1	
Gagarin (Smolensk Region)	2	✓
Gatchina (Leningrad Region)	3	
Gavrilov-Yam (Yaroslavl Region)	2	✓
Gay (Orenburg Region)	12	✓
Gazoprovod (Moscow Region)	1	
Gelendzhik (Krasnodar Territory)	8	
Georgievsk (Stavropol Territory)	11	✓
Glazov (Udmurtian Republic)	4	✓
Glazunovka (Orel Region)	2	✓
Golenishchevo (Leninskiy distr., Moscow Region)	1	
Golitsyno (Moscow Region)	1	✓
Golokhvastovo (Naro-Fominsky distr., Moscow Region)	1	✓
Golokhvastovo (Moscow)	1	✓
Goluboy Zaliv (Novosibirsk Region)	15	
Gorchakovo (Moscow)	1	
Gorelovo (St. Petersburg)	3	
Gorno-Altaysk (Republic of Altai)	15	✓
Gorodets (Nizhny Novgorod Region)	4	
Gorodishche (Leninskiy distr., Moscow Region)	1	
Gorodishche (Tver Region)	2	✓
Gorodishche (Voskresenskiy distr., Moscow Region)	1	
Gorohovets (Nizhniy Novgorod Region)	4	✓
Gorskaya (St. Petersburg)	3	
Goryachiy Klyuch (Krasnodar Territory)	8	✓
GOSNIIGA (Moscow Region)	1	
Govorovo (Moscow Region)	1	
Grayvoron (Belgorod Region)	2	✓
Grozniy (Chechen Republic)	11	
Gryazi (Lipetsk Region)	2	✓
Gryazovets (Vologda Region)	2	✓
Gubakha (Perm Territory)	13	✓
Gubkin (Belgorod Region)	2	✓
Gubkino (Leninskiy distr., Moscow Region)	1	
Gubkinskiy (Yamal-Nenets Autonomous Area)	14	✓
Gubtsevo (Moscow Region)	1	
Gudermes (Chechen Republic)	11	
Gukovo (Rostov-on-Don Region)	8	✓
Gulkevichi (Krasnodar Territory)	8	
Gus-Khrustalnyi (Vladimir Region)	2	✓
Ilanskiy (Krasnoyarsk Territory)	16	✓
Ilskiy (Krasnodar Territory)	8	
Ilyichevka (Moscow)	1	
Ilyino (Moscow)	1	✓
Inta (Komi Republic)	10	✓
Inza (Ulyanovsk Region)	9	✓

Location	Rating Zone	Remote Area
Irbit (Sverdlovsk Region)	13	✓
Irkutsk (Irkutsk Region)	17	
Isakovo (Moscow)	1	✓
Ishimbay (Republic of Bashkortostan)	12	
Iskitim (Novosibirsk Region)	15	
Istra (Moscow Region)	1	
Ivangorod (Leningrad Region)	5	✓
Ivanovo (Podolsky distr., Moscow Region)	1	
Ivanovo (Ivanovo Region)	2	
Ivanovskoe (Naro-Fominsky distr., Moscow Region)	1	
Ivanteevka (Moscow Region)	1	
Izhevsk (Udmurtian Republic)	4	
Izluchinsk (Khanty-Mansi Autonomous Area – Yugra)	14	
Izobilnyy (Stavropol Territory)	11	✓
Izvarino (Moscow Region)	1	
Izvarinskoy shkoly (Moscow Region)	1	
Kachkanar (Sverdlovsk Region)	13	✓
Kadnikov (Vologda Region)	2	✓
Kalashnikovo (Tver Region)	2	✓
Kaluga (Kaluga Region)	2	
Kamenka (Leningrad Region)	3	
Kamenka (Leninskiy distr., Moscow Region)	1	
Kamenka (Moscow)	1	✓
Kamenka (Naro-Fominsky distr., Moscow Region)	1	
Kamenka (Orel Region)	2	
Kamenka (Volkhovskiy distr., Leningrad Region)	3	✓
Kamennogorsk (Leningrad Region)	5	✓
Kamensk-Shakhtinskiy (Rostov-on-Don Region)	8	
Kamensk-Uralskiy (Sverdlovsk Region)	13	
Kameshkovo (Vladimir Region)	2	✓
Kamyshin (Volgograd Region)	9	✓
Kamyshlov (Sverdlovsk Region)	13	✓
Kanash (Chuvash Republic)	4	✓
Kansk (Krasnoyarsk Territory)	16	✓
Karabanovo (Noginsky distr., Moscow Region)	1	✓
Karabulak (Republic of Ingushetia)	11	✓
Karachev (Bryansk Region)	2	✓
Karakashevo (Leninskiy distr., Moscow Region)	1	
Karpinsk (Sverdlovsk Region)	13	✓
Kartmazovo (Leninsky distr., Moscow Region)	1	
Kashira (Moscow Region)	1	✓
Kasimov (Ryazan Region)	2	✓
Kasli (Sverdlovsk Region)	13	
Kaspiysk (Republic of Daghestan)	11	
Kazan (Republic of Tatarstan)	4	
Kemerovo (Kemerovo Region)	16	
Khabarovsk (Khabarovsk Territory)	18	

* Service capability includes large settlements only. For more information please contact your nearest DHL Express office.
✓ For remote area locations an additional tariff is applied.

ZONES AND RATES

Connecting Your World
Sustainability
Service Offering
How to Ship with DHL Express
Digitalization
► Zones and Rates

Calculate the Price of Your Shipment	Optional Services	Surcharges	Customs Services	Service Capability and Rating Zones	Export Services
--------------------------------------	-------------------	------------	------------------	-------------------------------------	-----------------

RATING ZONES*

Location	Rating Zone	Remote Area
Khadyzhensk (Krasnodar Territory)	8	✓
Khanty-Mansiysk (Khanty-Mansi Autonomous Area – Yugra)	14	
Kharyino (Leninskiy distr., Moscow Region)	1	
Khatminki (Naro-Fominsky distr., Moscow Region)	1	
Khimki (Moscow Region)	1	
Khomutovo (Balashikhinsky distr., Moscow Region)	1	
Khomutovo (Stupinskiy distr., Moscow Region)	1	✓
Khotkovo (Moscow Region)	1	✓
Khotynets (Orel Region)	2	✓
Kinel (Samara Region)	7	
Kineshma (Ivanovo Region)	2	✓
Kingisepp (Leningrad Region)	5	✓
Kirillov (Vologda Region)	2	✓
Kirishi (Leningrad Region)	3	✓
Kirov (Kirov Region)	4	
Kirov (Kaluga Region)	2	✓
Kirovgrad (Sverdlovsk Region)	13	✓
Kirovo-Chepetsk (Kirov Region)	4	
Kirovsk (Murmansk Region)	10	✓
Kirovsk (Kirovsk distr., Leningrad Region)	3	✓
Kirpichnogo Zavoda (Klin distr., Moscow Region)	1	✓
Kirpichnogo Zavoda (Naro-Fominsky distr., Moscow Region)	1	
Kirpichnyy (Sverdlovsk Region)	13	
Kiselevka (Leninskiy distr., Moscow Region)	1	
Kislovodsk (Stavropol Territory)	11	
Klimovka (Moscow)	1	✓
Klimovsk (Moscow Region)	1	
Klin (Moscow Region)	1	
Klintsy (Bryansk Region)	2	✓
Klokov (Moscow)	1	
Knutovo (Leninskiy distr., Moscow Region)	1	
Kogalym (Khanty-Mansi Autonomous Area – Yugra)	14	✓
Kokhma (Ivanovo Region)	2	
Kola (Murmansk Region)	10	
Kolchugino (Vladimir Region)	2	✓
Kolomna (Moscow Region)	1	
Kolotilovo (Podolskiy distr., Moscow Region)	1	✓
Kolpino (St. Petersburg)	3	
Kommunar (Leningrad Region)	3	
Kommunarka (Moscow Region)	1	
Komsomolskiy (Republic of Mordovia)	4	✓
Komsomolsk-na-Amure (Khabarovsk Territory)	18	
Konakovo (Tver Region)	2	✓
Konakovo (Moscow)	1	✓
Koncheevo (Leninskiy distr., Moscow Region)	1	
Kondopoga (Republic of Karelia)	5	✓
Kondrovo (Kaluga Region)	2	

Location	Rating Zone	Remote Area
Konyushkovo (Naro-Fominsky distr., Moscow Region)	1	
Kopeysk (Chelyabinsk Region)	13	
Korenevo (Lyuberetsky distr., Moscow Region)	1	
Korenovsk (Krasnodar Territory)	8	✓
Korkino (Chelyabinsk Region)	13	
Korocha (Belgorod Region)	2	✓
Korolev (Moscow Region)	1	
Koryazhma (Arhangelsk Region)	10	✓
Kosino (Moscow)	1	
Kosino-Ukhtomskiy (Moscow Region)	1	
Kostishovo (Podolsky distr., Moscow Region)	1	
Kostomuksha (Republic of Karelia)	5	✓
Kostroma (Kostroma Region)	2	
Kotelniki (Moscow Region)	1	
Kotelnikovo (Gatchina distr., Leningrad Region)	3	
Kotlas (Arkhangelsk Region)	10	✓
Kotovsk (Tambov Region)	2	
Kovdor (Murmansk Region)	10	✓
Kovrov (Vladimir Region)	2	✓
Kozelsk (Kaluga Region)	2	✓
Kozhukhovo (Moscow)	1	
Kozlovka (Chuvash Republic)	4	✓
Kozlovo (Kaluga Region)	2	
Kozmodemyansk (Republic of Mari El)	4	✓
Krasnaya Gora (Tver Region)	2	
Krasnaya Pakhra (Podolskiy distr., Moscow Region)	1	✓
Krasnaya Polyana (Krasnodar Territory)	11	✓
Krasnaya Volya (Krasnodar Territory)	11	✓
Krasnoarmeysk (Moscow Region)	1	✓
Krasnoarmeyskiy (Krasnodar Territory)	8	
Krasnodar (Krasnodar Territory)	8	
Krasnoe (Podolsky distr., Moscow Region)	1	✓
Krasnoe Selo (St. Petersburg)	3	
Krasnogorsk (Moscow Region)	1	
Krasnokamsk (Perm Territory)	13	
Krasnoselskiy (Krasnodar Territory)	8	
Krasnoturinsk (Sverdlovsk Region)	13	✓
Krasnoufimsk (Sverdlovsk Region)	13	✓
Krasnouralsk (Sverdlovsk Region)	13	✓
Krasnoyarsk (Krasnoyarsk Territory)	16	
Krasnozavodsk (Moscow Region)	1	✓
Krasnoznamensk (Moscow Region)	1	✓
Krasny Sulin (Rostov-on-Don Region)	8	
Krasnye Gorki (Naro-Fominsky distr., Moscow Region)	1	
Krasnyy (Krasnodar Territory)	8	
Krasnyy Bor (Ulyanovsk Region)	9	✓
Krekshino (Naro-Fominsky distr., Moscow Region)	1	

* Service capability includes large settlements only. For more information please contact your nearest DHL Express office.
✓ For remote area locations an additional tariff is applied.

ZONES AND RATES

Connecting Your World
Sustainability
Service Offering
How to Ship with DHL Express
Digitalization
► Zones and Rates

Calculate the Price of Your Shipment	Optional Services	Surcharges	Customs Services	Service Capability and Rating Zones	Export Services
--------------------------------------	-------------------	------------	------------------	-------------------------------------	-----------------

RATING ZONES*

	Rating Zone	Remote Area
Location		
Kremenki (Ulyanovsk Region)	9	✓
Kresty (Moscow)	1	✓
Krivosheino (Naro-Fominsky distr., Moscow Region)	1	
Kromy (Orel Region)	2	✓
Kronshtadt (St. Petersburg)	3	
Kropotkin (Krasnodar Territory)	8	
Krutaya Gora (Orel Region)	2	
Krymsk (Krasnodar Territory)	8	
Kryukovo (Zelenograd, Moscow)	1	
Kstovo (Nizhniy Novgorod Region)	4	
Kubinka (Odintsovo distr., Moscow Region)	1	✓
Kukshevo (Naro-Fominsky distr., Moscow Region)	1	
Kulebaki (Nizhniy Novgorod Region)	4	✓
Kumertau (Republic of Bashkortostan)	12	✓
Kungur (Perm Territory)	13	✓
Kurchatov (Kursk Region)	2	✓
Kurgan (Kurgan Region)	14	
Kurganinsk (Krasnodar Territory)	8	✓
Kurkino (Moscow)	1	
Kurovskoe (Moscow Region)	1	✓
Kursk (Kursk Region)	2	
Kushva (Sverdlovsk Region)	13	✓
Kutuzovo (Zelenograd, Moscow)	1	
Kuvekino (Leninskiy distr., Moscow Region)	1	
Kuvshinovo(Vologda Region)	2	
Kuznetsk (Penza Region)	4	✓
Kyshtym (Chelyabinsk Region)	13	
Kyzyl (Republic of Tuva)	16	✓
Labinsk (Krasnodar Territory)	8	✓
Lakhta (St. Petersburg)	3	
Lakinsk (Vladimir Region)	2	
Langepas (Khanty-Mansi Autonomous Area – Yugra)	14	✓
Lapshinka (Leninsky distr., Moscow Region)	1	
Laptevo (Leninskiy distr., Moscow Region)	1	
Larevo (Leninskiy distr., Moscow Region)	1	
Lebedyan (Lipetsk Region)	2	✓
Lebyazhe (Ulyanovsk Region)	9	✓
Leninogorsk (Republic of Tatarstan)	4	
Leninsk-Kuznetskiy (Kemerovo Region)	16	✓
Leninskoe (Novosibirsk Region)	15	
Lermontov (Stavropol Territory)	11	
Lesosibirsk (Krasnoyarsk Territory)	16	✓
Letovo (Leninsky distr., Moscow Region)	1	
Levashovo (St. Petersburg)	3	
Lgov (Kursk Region)	2	✓
Likino-Dulevo (Moscow Region)	1	✓
Likova (Leninskiy distr., Moscow Region)	1	

	Rating Zone	Remote Area
Location		
Lipetsk (Lipetsk Region)	2	
Lipki (Ulyanovsk Region)	9	
Lipki (Orel Region)	2	
Lisiy Nos (St. Petersburg)	3	
Liski (Voronezh Region)	2	✓
Livadiya (Primorye Territory)	18	
Lobnya (Moscow Region)	1	
Lomonosov (St. Petersburg)	3	
Lopatino (Moscow)	1	✓
Losino-Petrovskiy (Moscow Region)	1	
Luga (Leningrad Region)	5	
Lugovoy (Balashikhinsky distr., Moscow Region)	1	
Lugovoy (Dmitrovsky distr., Moscow Region)	1	✓
Lukhovitsy (Moscow Region)	1	
Lukino (Leninskiy distr., Moscow Region)	1	
Lukino (Naro-Fominsky distr., Moscow Region)	1	✓
Luza (Kirov Region)	4	
Luzhki (Moscow)	1	✓
Luzhki (Ramensky distr., Moscow Region)	1	
Lyskovo (Nizhniy Novgorod Region)	4	✓
Lysva (Perm Territory)	13	✓
Lytkarino (Moscow Region)	1	
Lyubertsy (Moscow Region)	1	
Lyudinovo (Kaluga Region)	2	✓
Magas (Republic of Ingushetia)	11	✓
Magnitogorsk (Chelyabinsk Region)	14	
Makarov (Noginsky distr., Moscow Region)	1	
Makhachkala (Republic of Daghestan)	11	
Maleevka (Naro-Fominsky distr., Moscow Region)	1	✓
Malgobek (Republic of Ingushetia)	11	✓
Malino (Zelenograd, Moscow)	1	
Maloarkhangelsk (Orel Region)	2	✓
Maloyaroslavets (Kaluga Region)	2	
Malygino (Podolskiy distr., Moscow Region)	1	✓
Mamadysh (Republic of Tatarstan)	4	✓
Mamonovo (Leninskiy distr., Moscow Region)	1	
Mamyri (Moscow Region)	1	
Marfino (Naro-Fominsky distr., Moscow Region)	1	
Marks (Saratov Region)	9	✓
Martyush (Sverdlovsk Region)	13	✓
Marushkino (Naro-Fominsky distr., Moscow Region)	1	
Maryino (Noginsky distr., Moscow Region)	1	
Maykop (Republic of Adygeya)	8	
Mayskiy (Kabardino-Balkariya Region)	11	✓
Mayskiy (Vologda Region)	2	
Medvedevo (Orel Region)	2	
Medvezhegorsk (Republic of Karelia)	5	✓

* Service capability includes large settlements only. For more information please contact your nearest DHL Express office.
✓ For remote area locations an additional tariff is applied.

ZONES AND RATES

Connecting Your World
Sustainability
Service Offering
How to Ship with DHL Express
Digitalization
► Zones and Rates

Calculate the Price of Your Shipment	Optional Services	Surcharges	Customs Services	Service Capability and Rating Zones	Export Services
--------------------------------------	-------------------	------------	------------------	-------------------------------------	-----------------

RATING ZONES*

Location	Rating Zone	Remote Area
Medyn (Kaluga Region)	2	✓
Mezion (Khanty-Mansi Autonomous Area – Yugra)	14	
Meleuz (Republic of Bashkortostan)	12	✓
Melioratorov (Vologda Region)	2	
Mendeleevsk (Republic of Tatarstan)	4	
Meshchovsk (Kaluga Region)	2	✓
Meshkovo (Leninskiy distr., Moscow Region)	1	
Metallostroy (St. Petersburg)	3	
Mezhdurechensk (Kemerovo Region)	16	✓
Miass (Chelyabinsk Region)	13	✓
Michurinsk (Tambov Region)	2	✓
Mikhaylovka (Orel Region)	2	
Mikhaylovsk (Stavropol Territory)	11	
Millerovo (Rostov-on-Don Region)	8	✓
Miloradovo (Leninskiy distr., Moscow Region)	1	
Milyukovo (Naro-Fominsky distr., Moscow Region)	1	
Mineralnye Vody (Stavropol Territory)	11	
Minusinsk (Krasnoyarsk Territory)	16	
Minvneshnaya (Leninskiy distr., Moscow Region)	1	
Mirnyy (Tikhoretsk distr., Krasnodar Territory)	8	✓
Mirnyy (Ramenskiy distr., Moscow Region)	1	✓
Mirnyy (Tver Region)	2	✓
Mitino (Moscow)	1	
Molodtsy (Podolskiy distr., Moscow Region)	1	
Monchegorsk (Murmansk Region)	10	✓
Mosalsk (Kaluga Region)	2	✓
Moscow	1	
Moskovskiy (Moscow Region)	1	
Mosrentgen (Moscow Region)	1	
Mostovskoe (Podolskiy distr., Moscow Region)	1	
Mozhaysk (Moscow Region)	1	✓
Mozhga (Udmurtian Republic)	4	✓
Mtsensk (Orel Region)	2	✓
Muravlenko (Yamal-Nenets Autonomous Area)	14	✓
Murmansk (Murmansk Region)	10	
Murmashi (Murmansk Region)	10	
Murom (Vladimir Region)	4	✓
Murygino (Smolensk Region)	2	✓
Myski (Kemerovo Region)	16	✓
Mytishchi (Moscow Region)	1	
Naberezhnye Chelny (Republic of Tatarstan)	4	
Nadym (Yamal-Nenets Autonomous Area)	14	✓
Nagorniy (Yaroslavl Region)	2	
Nakhodka (Primorye Territory)	18	
Nalchik (Kabardino-Balkarian Republic)	11	✓
Naro-Fominsk (Moscow Region)	1	
Naryshkino (Orel Region)	2	

Location	Rating Zone	Remote Area
Nastasyino (Naro-Fominsky distr., Moscow Region)	1	
Navashino (Nizhniy Novgorod Region)	4	✓
Nazarovo (Krasnoyarsk Territory)	16	✓
Nazaryevo (Moscow)	1	
Nazran (Republic of Ingushetia)	11	✓
Neftegorsk (Samara Region)	7	✓
Neftekamsk (Republic of Bashkortostan)	12	✓
Neftekumsk (Stavropol Territory)	11	✓
Nefteyugansk (Khanty-Mansi Autonomous Area – Yugra)	14	✓
Nekrasovka (Moscow)	1	
Nerekhta (Kostroma Region)	2	✓
Nevyansk (Sverdlovsk Region)	13	✓
Nikolaevka (Voronezh Region)	2	✓
Nikolo-Khovanskoe (Leninsky distr., Moscow Region)	1	
Nikolskoe (Voronezh Region)	2	✓
Nikolskoe (Gatchina distr., Leningrad Region)	3	
Nikolskoe (Tosno distr., Leningrad Region)	3	
Nikolyskoe (Leninskiy distr., Moscow Region)	1	
Nikolyskoe (Podolskiy distr., Moscow Region)	1	
Nikonovo (Podolskiy distr., Moscow Region)	1	
Nikulskoe (Podolskiy distr., Moscow Region)	1	
Nizhnee Valuevo (Leninskiy distr., Moscow Region)	1	
Nizhnekamsk (Republic of Tatarstan)	4	
Nizhnevartovsk (Khanty-Mansi Autonomous Area – Yugra)	14	
Nizhniy Novgorod (Nizhniy Novgorod Region)	4	
Nizhniy Tagil (Sverdlovsk Region)	13	
Nizhnyaya Salda (Sverdlovsk Region)	13	
Nizhnyaya Tura (Sverdlovsk Region)	13	✓
Noginsk (Moscow Region)	1	
Norilsk (Krasnoyarsk Territory)	16	✓
Novaya Ladoga (Leningrad Region)	3	✓
Novaya Lyalya (Sverdlovsk Region)	13	✓
Novinki (Leninskiy distr., Moscow Region)	1	
Novoaltaysk (Altai Territory)	15	
Novobutakovo (Moscow)	1	
Novocheboksarsk (Chuvash Republic)	4	
Novocherkassk (Rostov-on-Don Region)	8	
Novodvinsk (Arkhangelsk Region)	10	
Novokosino (Moscow)	1	
Novokubansk (Krasnodar Territory)	8	
Novokuybyshevsk (Samara Region)	7	
Novokuznetsk (Kemerovo Region)	16	
Novomalino (Moscow)	1	
Novomikhaylovskiy (Krasnodar Territory)	8	✓
Novomoskovsk (Tula Region)	2	✓
Novoperedelkino (Moscow)	1	
Novorossiysk (Krasnodar Territory)	8	

* Service capability includes large settlements only. For more information please contact your nearest DHL Express office.
✓ For remote area locations an additional tariff is applied.

ZONES AND RATES

Connecting Your World
Sustainability
Service Offering
How to Ship with DHL Express
Digitalization
► Zones and Rates

Calculate the Price of Your Shipment	Optional Services	Surcharges	Customs Services	Service Capability and Rating Zones	Export Services
--------------------------------------	-------------------	------------	------------------	-------------------------------------	-----------------

RATING ZONES*

Location	Rating Zone	Remote Area
Novoselki (Podolsky distr., Moscow Region)	1	✓
Novoshakhtinsk (Rostov-on-Don Region)	8	✓
Novosibirsk (Novosibirsk Region)	15	
Novosil (Orel Region)	2	✓
Novotroitsk (Orenburg Region)	12	
Novoulyanovsk (Ulyanovsk Region)	9	
Novouralsk (Sverdlovsk Region)	13	✓
Novovoronezh (Voronezh Region)	2	✓
Novozavidovskiy (Tver Region)	2	✓
Noviy (Egoryevsk distr., Moscow Region)	1	
Noviy (Krasnogorsk distr., Moscow Region)	1	
Noviy Urengoy (Yamal-Nenets Autonomous Area)	14	
Novyy (Krasnodar Reg)	8	
Novyy Gorodok (Odintsovsky distr., Moscow Region)	1	✓
Novyy Gorodok (Shchelkovsky distr., Moscow Region)	1	
Novyy Oskol (Belgorod Region)	2	✓
Noyabrsk (Yamal-Nenets Autonomous Area)	14	
Nyagan (Khanty-Mansi Autonomous Area – Yugra)	14	✓
Ob (Novosibirsk Region)	15	
Obninsk (Kaluga Region)	2	
Odintsovo (Odintsovo distr., Moscow Region)	1	
Odintsovo (Domodedovsky distr., Moscow Region)	1	
Oktyabrsk (Samara Region)	7	
Oktyabrskiy (Republic of Bashkortostan)	12	✓
Oktyabrskiy (Istrinsky distr., Moscow Region)	1	✓
Oktyabrskiy (Odintsovo distr., Moscow Region)	1	✓
Oktyabrskiy (Orel Region)	2	
Oktyabrskoe (Ulyanovsk Region)	9	✓
Oktyabrskiy (Lyubertsy distr., Moscow Region)	1	
Oktyabrskiy (Krasnodar Territory)	8	
Olenegorsk (Murmansk Region)	10	✓
Olgino (St. Petersburg)	3	
Olonets (Republic of Karelia)	5	✓
Omsk (Omsk Region)	15	
Onega (Arkhangelsk Region)	10	✓
Onokhoy (Republic of Buryatia)	17	
Orekhovo-Zuevo (Moscow Region)	1	
Orel (Orel Region)	2	
Orenburg (Orenburg Region)	12	
Orlovskiy (Rostov-on-Don Region)	8	✓
Orsk (Orenburg Region)	12	
Osinki (Solnechnogorsky distr., Moscow Region)	1	✓
Osinniki (Kemerovo Region)	16	
Ostafyevo (Podolsky distr., Moscow Region)	1	
Ostrogzhsk (Voronezh Region)	2	✓
Ostrov (Leninsky distr., Moscow Region)	1	
Otradnoe (Bryansk Region)	2	

Location	Rating Zone	Remote Area
Otradnoe (Kirovsk distr., Leningrad Region)	3	
Otradnoe (Krasnogorsky distr., Moscow Region)	1	
Otradnoe (Voronezh Region)	2	
Otradniy (Samara Region)	7	
Ozernyy (Naro-Fominsky distr., Moscow Region)	1	
Ozersk (Chelyabinsk Region)	13	
Oznobishino (Podolsky distr., Moscow Region)	1	
Pargolovo (St. Petersburg)	3	
Partizansk (Primorsky Region)	18	✓
Pavlovo (Nizhniy Novgorod Region)	4	
Pavlovsk (St. Petersburg)	3	
Pavlovsk (Voronezh Region)	2	✓
Pavlovskiy (Temryuk distr., Krasnodar Territory)	8	✓
Pavlovskiy Posad (Moscow Region)	1	✓
Pechora (Komi Republic)	10	✓
Pechory (Pskov Region)	5	✓
Penino (Leninskiy distr., Moscow Region)	1	
Penza (Penza Region)	4	
Pereslavl-Zalesskiy (Yaroslavl Region)	2	✓
Peresvet (Moscow Region)	1	✓
Perm (Perm Territory)	13	
Pervomayka (Ramensky distr., Moscow Region)	1	
Pervomayskiy (Istrinsky distr., Moscow Region)	1	✓
Pervomayskiy (Mineralovodskiy distr., Stavropol Territory)	11	
Pervomayskiy (Tula Region)	2	
Pervomayskoe (Naro-Fominsky distr., Moscow Region)	1	
Pervouralsk (Sverdlovsk Region)	13	
Pesochniy (St. Petersburg)	3	
Pesye (Podolsky distr., Moscow Region)	1	
Petergof (St. Petersburg)	3	
Petroslavyanka (St. Petersburg)	3	
Petrozavodsk (Republic of Karelia)	5	
Petushki (Vladimir Region)	2	✓
Pionerskiy (Istrinsky distr., Moscow Region)	1	✓
Pionerskiy (Vologda Region)	2	✓
Piskovo (Leninskiy distr., Moscow Region)	1	
Pitkyaranta (Republic of Karelia)	5	✓
Pochinki (Podolsky distr., Moscow Region)	1	
Pochinok (Vologda Region)	2	
Podolsk (Moscow Region)	1	
Podosinki (Podolskiy distr., Moscow Region)	1	✓
Pogar (Bryansk Region)	2	✓
Pokhvistnevo (Samara Region)	7	✓
Pokrov (Klin distr., Moscow Region)	1	✓
Pokrov (Moscow Region)	1	
Pokrovskoe (Odintsovsky distr., Moscow Region)	1	✓
Pokrovskoe (Vologda Region)	2	✓

* Service capability includes large settlements only. For more information please contact your nearest DHL Express office.
✓ For remote area locations an additional tariff is applied.

ZONES AND RATES

Connecting Your World
Sustainability
Service Offering
How to Ship with DHL Express
Digitalization
► Zones and Rates

Calculate the Price of Your Shipment	Optional Services	Surcharges	Customs Services	Service Capability and Rating Zones	Export Services
--------------------------------------	-------------------	------------	------------------	-------------------------------------	-----------------

RATING ZONES*

Location	Rating Zone	Remote Area
Polevskoy (Sverdlovsk Region)	13	
Polyany (Podolskiy distr., Moscow Region)	1	✓
Pontonniy (St. Petersburg)	3	
Popovka (Moscow)	1	
Postnikovo (Naro-Fominsky distr., Moscow Region)	1	
Povorino (Voronezh Region)	2	✓
Primorsk (Leningrad Region)	5	✓
Primorskiy (Temryuk distr., Krasnodar Territory)	8	
Privolzhsk (Ivanovo Region)	2	✓
Progress (Temryuk distr., Krasnodar Territory)	8	
Prokhladny (Kabardino-Balkarian Republic)	11	✓
Prokhorovka (Belgorod Region)	2	✓
Prokopyevsk (Kemerovo Region)	16	
Prokshino (Leninsky distr., Moscow Region)	1	
Proletarsk (Rostov-on-Don Region)	8	✓
Protvino (Moscow Region)	1	✓
Pskov (Pskov Region)	5	
Ptichnoe (Naro-Fominsky distr., Moscow Region)	1	
Puchkovo (Naro-Fominsky distr., Moscow Region)	1	
Pugachev (Saratov Region)	9	✓
Pushchino (Serpukhovskoy distr., Moscow Region)	1	
Pushkin (St. Petersburg)	3	
Pushkino (Moscow Region)	1	
Pushkino (Ramenskiy distr., Moscow Region)	1	✓
Pyatigorsk (Stavropol Territory)	11	
Pyatovskoe (Naro-Fominsky distr., Moscow Region)	1	
Pykhchevo (Leninskiy distr., Moscow Region)	1	
Pykhtino (Leninskiy distr., Moscow Region)	1	
Pyt-Yakh (Khanty-Mansi Autonomous Area – Yugra)	14	✓
Radchenko (Tver Region)	2	
Radiotsentr (Leninskiy distr., Moscow Region)	1	
Raduzhniy (Khanty-Mansi Autonomous Area – Yugra)	14	✓
Raduzhniy (Vladimir Region)	2	
Raevo (Podolsky distr., Moscow Region)	1	✓
Ramenskoe (Moscow Region)	1	
Rasskazovka (Leninskiy distr., Moscow Region)	1	
Rasskazovo (Tambov Region)	2	
Rastoropovo (Leninskiy distr., Moscow Region)	1	
Razdolnoe (Novosibirsk Region)	15	
Razliv (St. Petersburg)	3	
Redkino (Tver Region)	2	
Repino (St. Petersburg)	3	
Reutov (Moscow Region)	1	
Revda (Sverdlovsk Region)	13	
Rezh (Sverdlovsk Region)	13	✓
Rodniki (Ivanovo Region)	2	✓
Rogozino (Naro-Fominsky distr., Moscow Region)	1	

Location	Rating Zone	Remote Area
Roshchinskiy (Omsk Region)	15	✓
Roslavl (Smolensk Region)	2	✓
Rostov (Yaroslavl Region)	2	✓
Rostov-on-Don (Rostov-on-Don Region)	8	
Rozhdestvenno (Moscow)	1	✓
Rozhnovo (Moscow)	1	
Rublevo (Moscow)	1	
Rubtsovsk (Altai Territory)	15	✓
Rumyantsevo (Moscow Region)	1	
Rusino (Podolsky distr., Moscow Region)	1	
Ruzaevka (Republic of Mordovia)	4	
Ryazan (Ryazan Region)	2	
Ryazhsk (Ryazan Region)	2	✓
Rybatskoe (St. Petersburg)	3	
Rybino (Podolsky distr., Moscow Region)	1	
Rybinsk (Yaroslavl Region)	2	✓
Rybnoe (Ryazan Region)	2	
Rybnoe (Dmitrovsky distr., Moscow Region)	1	✓
Rzhev (Tver Region)	2	✓
Safonovo (Smolensk Region)	2	✓
Salaryevo (Moscow Region)	1	
Salavat (Republic of Bashkortostan)	12	
Salekhard (Yamal-Nenets Autonomous Area)	14	✓
Salsk (Rostov-on-Don Region)	8	✓
Samara (Samara Region)	7	
Saperniy (St. Petersburg)	3	
Saransk (Republic of Mordovia)	4	
Sarapul (Udmurtian Republic)	4	✓
Saratov (Saratov Region)	9	
Sarov (Nizhniy Novgorod Region)	4	✓
Sasovo (Ryazan Region)	2	✓
Sayanogorsk (Republic of Khakassia)	16	✓
Sebezha (Pskov Region)	5	✓
Segezha (Republic of Karelia)	5	✓
Selenginsk (Republic of Buryatia)	17	✓
Seltso (Bryansk Region)	2	✓
Semenov (Nizhny Novgorod Region)	4	✓
Semiluki (Voronezh Region)	2	
Sengiley (Ulyanovsk Region)	9	✓
Sergiev Posad (Moscow Region)	1	
Serov (Sverdlovsk Region)	13	✓
Serpukhov (Moscow Region)	1	
Sertolovo (Leningrad Region)	3	
Sestoret'sk (St. Petersburg)	3	
Severny (Belgorod Region)	2	
Severniy (Moscow)	1	
Severodvinsk (Arkhangelsk Region)	10	

* Service capability includes large settlements only. For more information please contact your nearest DHL Express office.
✓ For remote area locations an additional tariff is applied.

ZONES AND RATES

Connecting Your World
Sustainability
Service Offering
How to Ship with DHL Express
Digitalization
► Zones and Rates

Calculate the Price of Your Shipment	Optional Services	Surcharges	Customs Services	Service Capability and Rating Zones	Export Services
--------------------------------------	-------------------	------------	------------------	-------------------------------------	-----------------

RATING ZONES*

Location	Rating Zone	Remote Area
Severomorsk (Murmansk Region)	10	✓
Severouralsk (Sverdlovsk Region)	13	✓
Shablykino (Orel Region)	2	✓
Shadrinsk (Kurgan Region)	14	✓
Shakhovo (Podolsky distr., Moscow Region)	1	✓
Shakhty (Rostov-on-Don Region)	8	
Sharapovo (Naro-Fominsk distr., Moscow Region)	1	
Sharya (Kostroma Region)	2	✓
Sharypovo (Krasnoyarsk Territory)	16	✓
Shatura (Moscow Region)	1	✓
Shchapovo (Podolsky distr., Moscow Region)	1	
Schekino (Tula Region)	2	
Schelkovo (Moscow Region)	1	
Scherbinka (Moscow Region)	1	
Shchuche (Orel Region)	2	
Shebekino (Belgorod Region)	2	
Shelbutovo (Leninskiy distr., Moscow Region)	1	
Shelekhov (Irkutsk Region)	17	
Shikhany (Saratov Region)	9	✓
Shiryaevo (Moscow)	1	
Shlisselburg (Leningrad Region)	3	✓
Shudayag (Komi Republic)	10	
Shumerlya (Chuvash Republic)	4	✓
Shushary (St. Petersburg)	3	
Shuya (Ivanovo Region)	2	
Sibay (Republic of Bashkortostan)	14	✓
Skopin (Ryazan Region)	2	✓
Slantsy (Leningrad Region)	5	✓
Slavnyy (Tver Region)	2	✓
Slavyansk-na-Kubani (Krasnodar Territory)	8	
Slobodskoy (Kirov Region)	4	✓
Slyudyanka (Irkutsk Region)	17	✓
Smolensk (Smolensk Region)	2	
Smyshlyaevka (Ulyanovsk Region)	9	✓
Smyshlyaevka (Samara Region)	7	
Snezhinsk (Chelyabinsk Region)	13	✓
Sobinka (Vladimir Region)	2	
Sochi (Krasnodar Territory)	11	
Sofyino (Podolsky distr., Moscow Region)	1	✓
Sokol (Vologda Region)	2	
Sokolovo (Naro-Fominsky distr., Moscow Region)	1	
Solikamsk (Perm Territory)	13	
Sol-Iletsk (Orenburg Region)	12	✓
Solnechniy (Voronezh Region)	2	
Solnechnoe (St. Petersburg)	3	
Solnechnogorsk (Moscow Region)	1	✓
Solnechnyy (Khanty-Mansi Autonomous Area – Yugra)	14	

Location	Rating Zone	Remote Area
Solntsevo (Moscow)	1	
Sorochinsk (Orenburg Region)	12	✓
Sortavala (Republic of Karelia)	5	✓
Sosenki (Moscow Region)	1	
Sosnogorsk (Komi Republic)	10	
Sosnovka (Vologda Region)	2	
Sosnoviy Bor (Leningrad Region)	5	
Sosnovy Bor (Republic of Buryatia)	17	
Sosnovyy Bor (Leninskiy distr., Moscow Region)	1	
Sovetskaya Gavan (Khabarovsk Territory)	18	
Sovetskiy (Leningrad Region)	5	
Sovetskiy (Khanty-Mansi Autonomous Area – Yugra)	14	✓
Sredneuralsk (Sverdlovsk Region)	13	
St. Petersburg	3	
Stanislavl (Leninskiy distr., Moscow Region)	1	
Staraya Kupavna (Moscow Region)	1	
Staritsa (Tver Region)	2	✓
Starodub (Bryansk Region)	2	✓
Staroselye (Leninskiy distr., Moscow Region)	1	
Starosyrovo (Podolsky distr., Moscow Region)	1	
Stariy Oskol (Belgorod Region)	2	✓
Stavropol (Stavropol Territory)	11	
Stepnoy (Krasnodar Territory)	8	
Sterlitamak (Republic of Bashkortostan)	12	
Stolbovo (Leninsky distr., Moscow Region)	1	
Stradan (Podolskiy distr., Moscow Region)	1	✓
Strezhevoy (Tomsk Region)	14	✓
Stroitel (Arkhangelsk Region)	10	
Stroitel (Tambov Region)	2	
Stroykeramika (Samara Region)	7	
Studentsy (Podolsky distr., Moscow Region)	1	
Stupino (Moscow Region)	1	
Sudogda (Vladimir Region)	2	
Sudzha (Kursk Region)	2	✓
Sukhinichi (Kaluga Region)	2	✓
Sukhodol (Samara Region)	7	✓
Sukhoy Log (Sverdlovsk Region)	13	✓
Surazh (Bryansk Region)	2	✓
Surgut (Khanty-Mansi Autonomous Area – Yugra)	14	
Surgut (Samara Reg)	7	✓
Suvorov (Tula Region)	2	✓
Suzdal (Vladimir Region)	2	
Svetlyy (Irkutsk Reg)	17	
Svetlyy (Noginsky distr., Moscow Region)	1	
Svetogorsk (Leningrad Region)	5	✓
Syktyvkar (Komi Republic)	10	
Sysert (Sverdlovsk Region)	13	✓

* Service capability includes large settlements only. For more information please contact your nearest DHL Express office.
✓ For remote area locations an additional tariff is applied.

ZONES AND RATES

Connecting Your World
Sustainability
Service Offering
How to Ship with DHL Express
Digitalization
► Zones and Rates

Calculate the Price of Your Shipment	Optional Services	Surcharges	Customs Services	Service Capability and Rating Zones	Export Services
--------------------------------------	-------------------	------------	------------------	-------------------------------------	-----------------

RATING ZONES*

Location	Rating Zone	Remote Area
Syzran (Samara Region)	7	
Taganrog (Rostov-on-Don Region)	8	
Talitsa (Sverdlovsk Region)	13	✓
Tambov (Tambov Region)	2	
Tarasovo (Podolsky distr., Moscow Region)	1	
Tarkhovka (St. Petersburg)	3	
Tarko-Sale (Yamal-Nenets Autonomous Area)	14	✓
Tayshet (Krasnoyarsk Territory)	17	✓
Temryuk (Krasnodar Territory)	8	
Terek (Kabardino-Balkarian Republic)	11	✓
Tikhoretsk (Krasnodar Territory)	8	
Tikhvin (Leningrad Region)	3	✓
Timashevsk (Krasnodar Territory)	8	
Tlyustenkhabl (Krasnodar Territory)	8	
Tobolsk (Tyumen Region)	13	✓
Togliatti (Samara Region)	7	
Tolmachevo (Novosibirsk Region)	15	
Tomsk (Tomsk Region)	15	
Torzhok (Tver Region)	2	✓
Tosno (Leningrad Region)	3	
Troitsk (Moscow Region)	1	
Troitsk (Chelyabinsk Region)	13	✓
Troitskoe (Podolsky distr., Moscow Region)	1	
Trubchevsk (Bryansk Region)	2	✓
Tsemdolina (Krasnodar Territory)	8	
Tuapse (Krasnodar Territory)	8	
Tula (Tula Region)	2	
Tupikovo (Leninskiy distr., Moscow Region)	1	
Tutaev (Yaroslavl Region)	2	
Tuymazy (Republic of Bashkortostan)	12	✓
Tver (Tver Region)	2	
Tyarlevo (St. Petersburg)	3	
Tynda (Amur Region)	19	✓
Tyumen (Tyumen Region)	13	
Udomlya (Tver Region)	2	✓
Ufa (Republic of Bashkortostan)	12	
Ugleurskiy (Perm Territory)	13	✓
Uglich (Yaroslavl Region)	2	✓
Ukhta (Komi Republic)	10	
Ulan-Ude (Republic of Buryatia)	17	
Ulyanovsk (Ulyanovsk Region)	9	
Ulyanovskogo Lesoparka (Leninsky distr., Moscow Region)	1	
Uray (Khanty-Mansi Autonomous Area – Yugra)	14	✓
Ushkovo (St. Petersburg)	3	
Usinsk (Komi Republic)	10	
Usman (Lipetsk Region)	2	✓
Usolye (Perm Territory)	13	

Location	Rating Zone	Remote Area
Usolye-Sibirskoe (Irkutsk Region)	17	✓
Ussuriysk (Primorye Territory)	18	
Ust-Ilimsk (Irkutsk Region)	17	✓
Ust-Izhora (St. Petersburg)	3	
Ust-Kinelskiy (Samara Region)	7	
Ust-Kut (Irkutsk Region)	17	✓
Ust-Labinsk (Krasnodar Territory)	8	✓
Utkina Zavod (St. Petersburg)	3	
Uvarovo (Domodedovsky distr., Moscow Region)	1	✓
Uzhur (Krasnoyarsk Territory)	16	✓
Uzlovaya (Tula Region)	2	✓
Vakhrushi (Kirov Region)	4	
Valuevo (Leninskiy distr., Moscow Region)	1	
Valuyki (Belgorod Region)	2	✓
Vanino (Khabarovsk Territory)	18	
Varvarino (Podolskiy distr., Moscow Region)	1	✓
Vatutinki (Leninskiy distr., Moscow Region)	1	
Velikie Luki (Pskov Region)	5	✓
Velikiy Novgorod (Novgorod Region)	5	
Velikiy Ustyug (Vologda Region)	10	✓
Velsk (Vologda Region)	2	✓
Vereshchagino (Perm Territory)	13	✓
Vereya (Ramenskiy distr., Moscow Region)	1	
Verkhnyaya Dubrovinka (Smolensk Region)	2	
Verkhnee Valuevo (Leninskiy distr., Moscow Region)	1	
Verkhniy Tagil (Sverdlovsk Region)	13	✓
Verkhnyaya Pyshma (Sverdlovsk Region)	13	
Verkhnyaya Salda (Sverdlovsk Region)	13	
Verkhovye (Moscow)	1	
Veseloe (Krasnodar Territory)	11	✓
Vichuga (Ivanovo Region)	2	✓
Vidnoe (Moscow Region)	1	
Vikhorevka (Irkutsk Region)	17	✓
Vishenki (Smolensk Region)	2	
Vladikavkaz (Republic of North Ossetia – Alania)	11	
Vladimir (Vladimir Region)	2	
Vladivostok (Primorye Territory)	18	
Vlasovo (Naro-Fominsky distr., Moscow Region)	1	
Vlasyevo (Leninskiy distr., Moscow Region)	1	
Vnukovo (Moscow Region)	1	
Volgodonsk (Rostov-on-Don Region)	8	
Volgograd (Volgograd Region)	9	
Volgorechensk (Kostroma Region)	2	
Volkhov (Volkhovskiy distr., Leningrad Region)	3	✓
Vologda (Vologda Region)	2	
Volsk (Saratov Region)	9	✓
Volzhsk (Region Mari El)	4	✓

* Service capability includes large settlements only. For more information please contact your nearest DHL Express office.
✓ For remote area locations an additional tariff is applied.

ZONES AND RATES

Connecting Your World
Sustainability
Service Offering
How to Ship with DHL Express
Digitalization
► Zones and Rates

Calculate the Price of Your Shipment	Optional Services	Surcharges	Customs Services	Service Capability and Rating Zones	Export Services
--------------------------------------	-------------------	------------	------------------	-------------------------------------	-----------------

RATING ZONES*

Location	Rating Zone	Remote Area
Volzhsk (Volgograd Region)	9	
Vorkuta (Komi Republic)	10	✓
Voronezh (Voronezh Region)	2	
Vorsino (Podolsky distr., Moscow Region)	1	
Vorsma (Nizhny Novgorod Region)	4	
Voskhod (Istrinsky distr., Moscow Region)	1	✓
Voskhod (Novosibirsk Region)	15	
Voskresensk (Moscow Region)	1	
Vostochniy (Moscow)	1	
Vostochniy (Trans-Baikal Territory)	17	
Vostochniy (Tihoretskiy distr., Krasnodar Territory)	8	
Vostryakovo (Moscow Region)	1	
Votkinsk (Udmurtian Republic)	4	
Vsevolozhsk (Leningrad Region)	3	
Vyazma (Smolensk Region)	2	✓
Vyazniki (Stavropol Territory)	11	
Vyborg (Leningrad Region)	5	
Vykhino-Zhulebino (Moscow Region)	1	
Vyksa (Nizhny Novgorod Region)	4	✓
Vyshniy Volochek (Tver Region)	2	✓
Vysokovsk (Moscow Region)	1	✓
Yablonovskiy (Republic of Adygeya)	8	
Yakhroma (Moscow Region)	1	✓
Yakovlevo (Leninskiy distr., Moscow Region)	1	
Yakovlevo (Podolsky distr., Moscow Region)	1	
Yalutorovsk (Tyumen Region)	13	✓
Yamontovo (Leninskiy distr., Moscow Region)	1	
Yanaut (Republic of Bashkortostan)	12	✓
Yantarnyi (Aksay distr., Rostov-on-Don Region)	8	
Yantarnyy (Balashikhinsky distr., Moscow Region)	1	
Yarega (Komi Republic)	10	✓
Yaroslavl (Yaroslavl Region)	2	
Yartsevo (Moscow)	1	✓
Yasnogorsk (Tula Region)	2	✓
Yazovo (Leninskiy distr., Moscow Region)	1	
Yoshkar-Ola (Republic of Mari El)	4	
Yubileyniy (Moscow Region)	1	
Yubileyniy (Krasnodar Territory)	8	✓
Yugorsk (Khanty-Mansi Autonomous Area – Yugra)	14	✓
Yukhnov (Kaluga Region)	2	✓
Yurev-Polskiy (Vladimir Region)	2	✓
Yurevets (Vladimir Region)	2	
Yuryevo (Naro-Fominsky distr., Moscow Region)	1	✓
Yuzhnouralsk (Chelyabinsk Region)	13	✓
Zabaykalskiy (Trans-Baikal Territory)	17	✓
Zabolotye (Moscow)	1	✓
Zadonsk (Lipetsk Region)	2	✓

Location	Rating Zone	Remote Area
Zainsk (Republic of Tatarstan)	4	
Zaozernyi (Kurgan Region)	14	
Zareche (Orel Region)	2	
Zarechye (Moscow)	1	
Zarechniy (Penza Region)	4	
Zarechnyy (Sverdlovsk Region)	13	✓
Zarechye (Volkhovskiy distr., Leningrad Region)	3	✓
Zarinsk (Altai Territory)	15	✓
Zavodoukovsk (Tyumen Region)	13	✓
Zavolzhye (Nizhny Novgorod Region)	4	
Zelenodolsk (Republic of Tatarstan)	4	✓
Zelenogorsk (Krasnoyarsk Territory)	16	✓
Zelenogorsk (St. Petersburg)	3	
Zelenograd (Moscow)	1	
Zeleniy (Tikhoretsk distr., Krasnodar Territory)	8	✓
Zelenyy Bor (Smolensk Region)	2	
Zernograd (Rostov-on-Don Region)	8	✓
Zheleznogorsk (Krasnoyarsk Territory)	16	✓
Zheleznogorsk (Kursk Region)	2	✓
Zheleznovodsk (Stavropol Territory)	11	
Zhigulevsk (Samara Region)	7	
Zhukovka (Moscow Region)	1	
Zhukovka (Bryansk Region)	2	✓
Zhukovka (Naro-Fominsky distr., Moscow Region)	1	
Zhukovka (Orel Region)	2	
Zukovskiy (Moscow Region)	1	
Zhulebino (Moscow Region)	1	
Zimenki (Leninsky distr., Moscow Region)	1	
Zlatoust (Chelyabinsk Region)	13	✓
Znamenka (Orel Region)	2	
Znamya Oktyabrya (Podolsky distr., Moscow Region)	1	
Zvenigorod (Moscow Region)	1	✓
Zverevo (Rostov-on-Don Region)	8	✓
Zverevo (Moscow)	1	✓

* Service capability includes large settlements only. For more information please contact your nearest DHL Express office.
✓ For remote area locations an additional tariff is applied.



Country Office:

127083 Moscow

8 Marta St., 14

Telephone: +7 (495) 956 1000, 8 (800) 7000-345

A full list of DHL Express offices in Russia
is available at express.dhl.ru

© DHL

© DHL Express

DHL® and DHL Express® are registered trademarks
of DHL International GmbH.

Valid from November 1st, 2023.

Subject to change without notice.

Approved by the Order №1-о6-09-10-23